

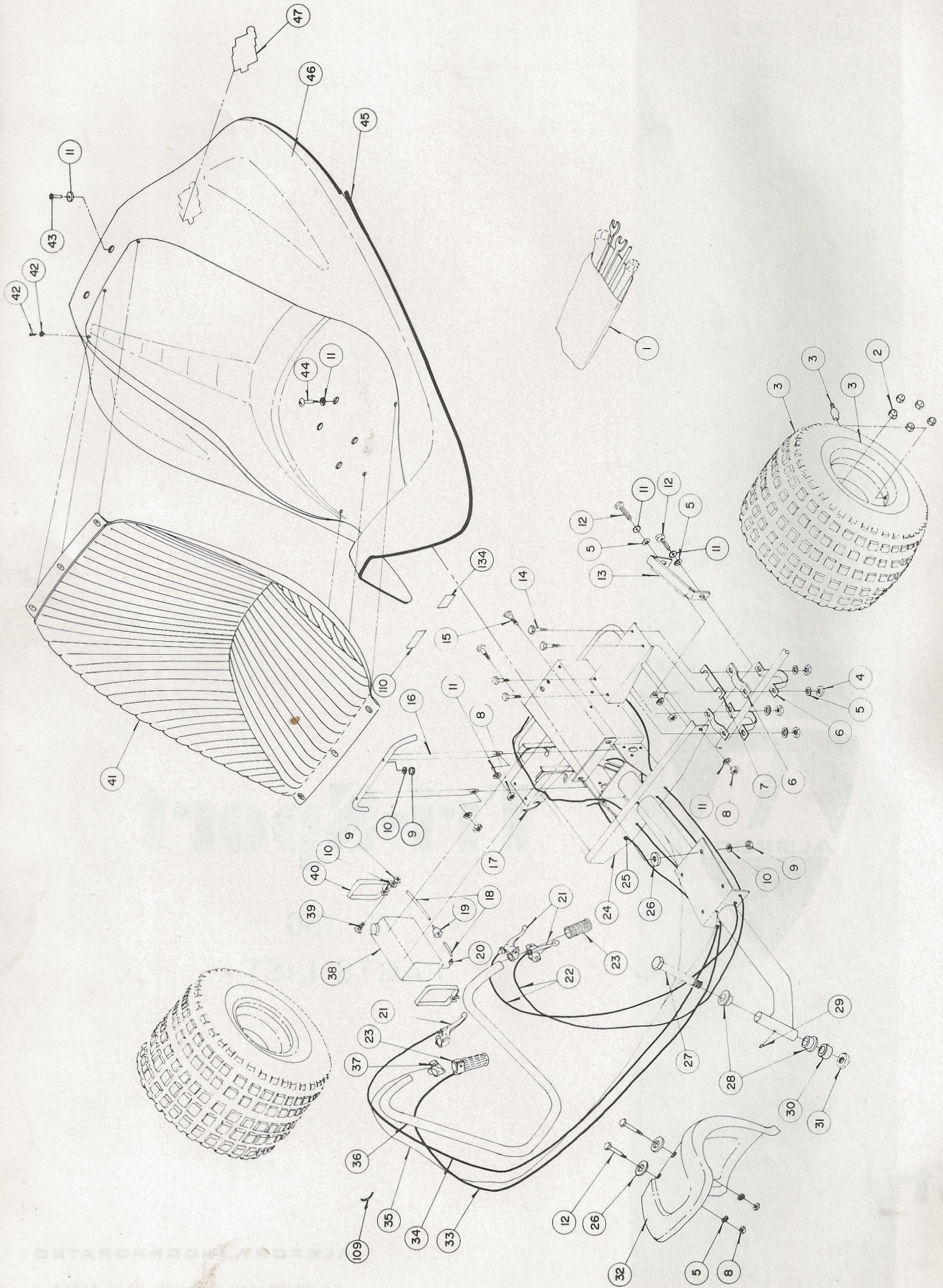


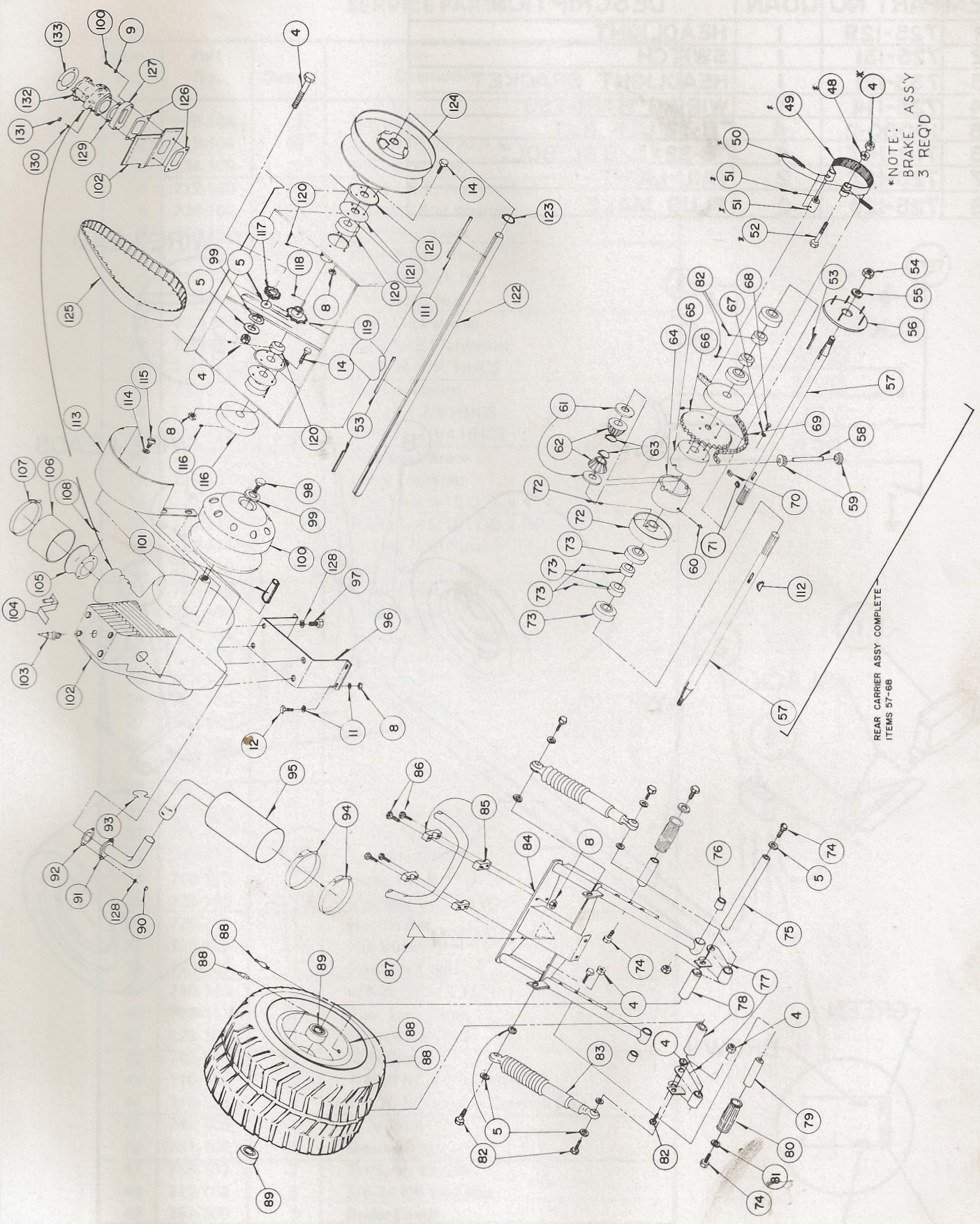
Tri-Sport

TS 150
PARTS LIST

ALSPORT, INCORPORATED

84 Whittlesey, Norwalk, Ohio 44857 •



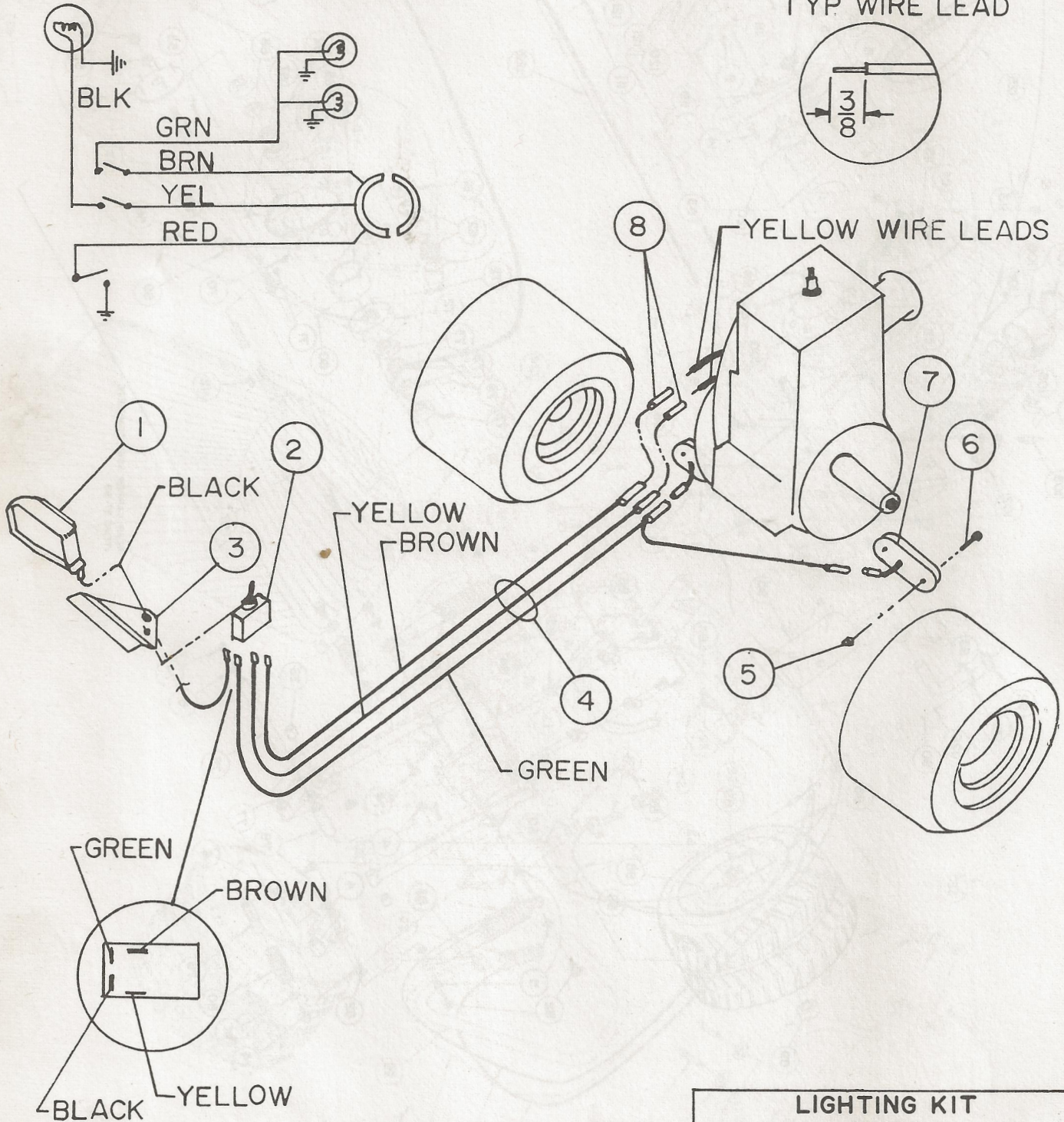
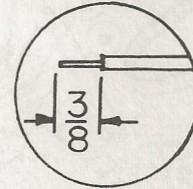


*NOTE:
BRAKE ASSY
3 REQD

REAR CARRIER ASSY COMPLETE
ITEMS 57-68

ITEM	PART NO	QUAN	DESCRIPTION
1	725-129	1	HEADLIGHT
2	725-131	1	SWITCH
3	733-121	1	HEADLIGHT BRACKET
4	725-114	1	WIRING HARNESS
5	10080-2	4	8-32 LCK NUT
6	710-147	4	8-32 x 5/8 SL BOLT
7	725-127	2	TAIL LIGHT
8	725-125	2	PLUG MALE

TYP WIRE LEAD



LIGHTING KIT
TS150

760-119

TRI-SPORT TS 150
SERVICE PARTS

April 10, 1972

Item No.	Part No.	Quan.	Description
1	745-104	1	Tool Kit
2	712-104	10	Lug. Nut 1/2-20 N.F. (60° Chamfer)
3	734-100	2	Rear Tire Assy.
4	712-100	18	3/8-24 N.F. Hex Lk. Nut
5	736-102	20	3/8 USS Flat Washer
6	749-109	4	1" Pillow Block
7	733-153	As Req'd.	Shim Pillow Block
8	712-102	22	5/16-24 Lock Nut
9	712-101	4	1/4-20 NC Nut
10	736-103	4	1/4" Lockwasher
11	736-104	18	5/16 SAE Flatwasher
12	710-128	2	5/16-24 x 1" HHCS
13	733-147	1	Muffler Mount
14	710-125	14	3/8-24 x 7/8 HHCS
15	710-121	8	5/16-24 x 3/4 HHCS
16	733-139	1	Rear Seat Brace
17	749-104	2	Cable Tie Wrap
18	723-112-4	As Req'd.	Fuel Line 5/16 O.D. x 4"
18	723-112-24	"	Fuel Line 5/16" OD x 24"
19	723-111	1	In Line Fuel Filter
20	723-110	1	Gas Tank Fitting
21	746-100	3	Brake Lever 7/8 Dia.
22	746-109	2	Brake Cable
23	720-101	1	Throttle Grip & Dummy Grip
24	733-137	1	Frame Weld Assy
25	735-101	12	Grommet Rubber
26	735-100	6	Rubber Washer
27	710-100	1	King Pin Bolt
28	748-100	2	Flange Bearing
29	737-101	1	Grease Fitting 1/4-28
30	750-109	1	Spacer
31	712-105	1	3/4-10 NC Hex Lock Nut
32	751-106	1	Front Fender
33	746-102	1	Throttle Cable
34	746-110	1	Brake Cable
35	725-100	1	Magneto Ground Wire
36	720-100	1	Handle Bar
37	725-107	1	Kill Button
38	723-107	1	Fuel Tank w/Cap
39	710-144	2	1/4-20 NC x 1 1/2 Rd Hd Sc.
40	723-117	2	Fuel Tank Strap
41	723-101	1	Deluxe Seat Pad
42	749-113	6	Male Snap
43	710-130	2	1/4-20 NC x 1 1/2 HHCS
44	710-123	4	1/4-20 NC x 1 1/2 Carriage Bolt
45	749-105	1	Jiffy Trim
46	751-102	1	Deluxe Body
47	759-101	2	Tri-Sport Decals
48	712-103	6	3/8-24 NF Hex Nut
49	757-100	3	Brake Bands
50	732-100	3	Compression Spring

Item No.	Part No.	Quan.	Description
51	757-104	3	Brake Pin
52	710-102	3	3/8-24 NF x 2 HHCS
53	714-104	3	3/16 Sq. x 1 1/2 Key
54	712-114	2	5/8-18 Hex Lock Nut
55	736-126	2	5/8 SAE Flatwasher
56	733-140	2	Wheel Hub (Tapered)
57	711-110	2	Differential Axle
58	711-111	1	Carrier Pin
59	748-114	2	Carrier Gear
60	737-100	1	Grease Fitting
61	736-128	2	Washer
62	748-113	2	Axle Gear
63	716-104	2	Retaining Rings
64	719-102	1	RH Diff. Housing
65	719-103	1	LH Diff. Housing
66	748-115	1	40A54T Sprocket
67	736-127	4	5/16 Washer
68	710-140	4	5/16 HHCS
69	713-107	1	Drive Chain
70	713-100	1	No. 40 Master Link
71	713-106	1	No. 40 Offset Link
72	757-105	2	1" Brake Drum
73	741-103	4	1" Bore Bearing w/Lock Collar
74	710-118	6	3/8-24 x 7/8 Whiz Lock
75	711-100	1	Front Axle
76	750-107	2	Bolt Bushing
77	733-128	2	Spindle Mount
78	750-100	2	Front Wheel Spacer
79	711-101	2	Foot Rest Mtg. Bar
80	720-102	2	Foot Rest Grip
81	736-106	2	Snubbing Washer
82	710-116	7	3/8-24 NF x 1 3/4 HHCS
83	749-106	2	Shock Absorber
84	733-120	1	Front Fork Weld Assy (Shock Only)
85	711-107	4	Handle Bar Mount
86	710-105	4	5/16-24 x 2 1/4 HHCS
87	759-100	1	Alsport Logo
88	734-101	1	Front Wheel Assy
89	741-102	1	Wheel Bearing 3/4 Dia.
90	712-115	4	8 mm Hex Nut
91	733-149	1	Exhaust Tube
92	723-132	1	Gasket, Exhaust
93	732-101	1	1120 Ball Joint Retaining Spring
94	723-121	2	5" Dia. Clamp
95	733-152	1	Muffler & Pipe
96	733-143	1	Motor Mount
97	710-139	4	5/16-18 NC x 1 HHCS
98	710-134	1	1/2-20 NF x 2 1/2 HHCS
99	736-119	2	1/2" Star Washer
100	717-110	1	Driver Unit

Complete Assy
PN 717-108

101	750-108	1	Crankshaft Ext.	
102	752-105	1	L-230 JLO Eng.	
103	749-112	1	Spark Plug (K-9) (Replacement Only)	
104	746-112	1	Throttle Cable Arm	
105	723-119	1	Air Horn HL Carb.	Purchase as 723-113 Assy
106	723-118	1	Air Filter	
107	723-120	1	Clamp	
108	710-146	As Req'd.	Screw 10-32 x 3/8 HL Carb.	
109	749-102	3	Cable Tie Wrap	
110	759-102	1	Off The Road Decal	
111	714-103	1	3/16 Sq. x 4 Key	
112	714-100	2	No. 9 Woodruff Key	
113	733-144	1	T.C. Shield	
114	736-122	3	3/8" Countersunk Washer	
115	710-137	3	3/8-16 x 7/8 Countersunk Bolt	
116	757-102	1	3/4" ID Brake Drum	
117	748-110	1	10T Idler Sprocket	
118	710-145	1	Set Screw 5/16"	
119	748-112	1	40B 10 Sprocket	
120	741-101	4	3/4" ID Bearing w/Collar	
121	749-110	4	3/4" Flange	
122	711-109	1	Jackshaft	
123	716-103	1	3/4" Hvy. Duty Snap Ring	
124	717-111	1	Driven Unit	
125	754-102	1	Drive Belt	
126	723-128	2	Gasket Eng. Carb.	
127	723-124	1	Carburetor Adaptor HL	
128	736-105	6	5/16 Lockwasher	
129	723-129	1	Gasket Carb.	
130	736-124	2	Washer, Waffle HL Carb.	
131	712-116	2	Nut M6 HL Carb.	
132	723-108	1	Carburetor HL	
133	723-130	1	Gasket Air Horn HL	
134	759-103	1	Serial Plate	

part
 TS-150
 PARTS LIST

101	1000000	1000000	1000000
102	1000000	1000000	1000000
103	1000000	1000000	1000000
104	1000000	1000000	1000000
105	1000000	1000000	1000000
106	1000000	1000000	1000000
107	1000000	1000000	1000000
108	1000000	1000000	1000000
109	1000000	1000000	1000000
110	1000000	1000000	1000000
111	1000000	1000000	1000000
112	1000000	1000000	1000000
113	1000000	1000000	1000000
114	1000000	1000000	1000000
115	1000000	1000000	1000000
116	1000000	1000000	1000000
117	1000000	1000000	1000000
118	1000000	1000000	1000000
119	1000000	1000000	1000000
120	1000000	1000000	1000000
121	1000000	1000000	1000000
122	1000000	1000000	1000000
123	1000000	1000000	1000000
124	1000000	1000000	1000000
125	1000000	1000000	1000000
126	1000000	1000000	1000000
127	1000000	1000000	1000000
128	1000000	1000000	1000000
129	1000000	1000000	1000000
130	1000000	1000000	1000000
131	1000000	1000000	1000000
132	1000000	1000000	1000000
133	1000000	1000000	1000000
134	1000000	1000000	1000000
135	1000000	1000000	1000000
136	1000000	1000000	1000000
137	1000000	1000000	1000000
138	1000000	1000000	1000000
139	1000000	1000000	1000000
140	1000000	1000000	1000000
141	1000000	1000000	1000000
142	1000000	1000000	1000000
143	1000000	1000000	1000000
144	1000000	1000000	1000000
145	1000000	1000000	1000000
146	1000000	1000000	1000000
147	1000000	1000000	1000000
148	1000000	1000000	1000000
149	1000000	1000000	1000000
150	1000000	1000000	1000000