

# SALSBUARY

# MODEL 780

## AUTOMATIC TORQUE CONVERTER

**ENGINE RATING:** 2-Cycle to 25 H. P.  
4-Cycle to 12 H. P.

For 2-cycle engines through 400 cc, drive pulleys are bored for 25 mm and 30 mm shafts (1/10 taper), as well as standard 3/4" and 1" straight bores. Engagement speed of the drive pulley is 2,300 rpm (standard 2-cycle). Variations are available for 2,800 rpm and above. Four 4-cycle engines, engagement speed is established at 1,600 rpm.

**SPEED RATIOS:** 3.76:1 reduction low speed with an overdrive ratio of .87:1 (engine rpm x 1.16) or greater under optimum conditions. The Model 795 torque converter is a high speed performance drive designed for applications such as snow vehicles which utilize 2-cycle engines in the 5,500 rpm class.

**LIGHT WEIGHT:** Aluminum die castings have been selected to provide one of the lightest high capacity drives on the market. Driven sheaves are of steel to accomodate the operating speeds encountered in racing requirements. The drive pulley dimensions are 7.22" outside diameter, weight 5.25 pounds. The driven pulley has a 9.26 diameter and weighs 8 pounds.

**ECONOMICAL:** In addition to the variety of drive pulley bore sizes mentioned above, driven pulley designs are available in standard sizes of 3/4" and 1". OEM requirements are available with internal splines, as well as integral shafts with external splines (see specification on the reverse side).

**TORQUE SENSITIVE:** The Salsbury Model 780 is a torque sensitive torque converter. Torque sensitive drives are particularly suited to those applications where immediate response to torque demand is required for down shifting and where engine speed is ideally maintained at its peak rpm.

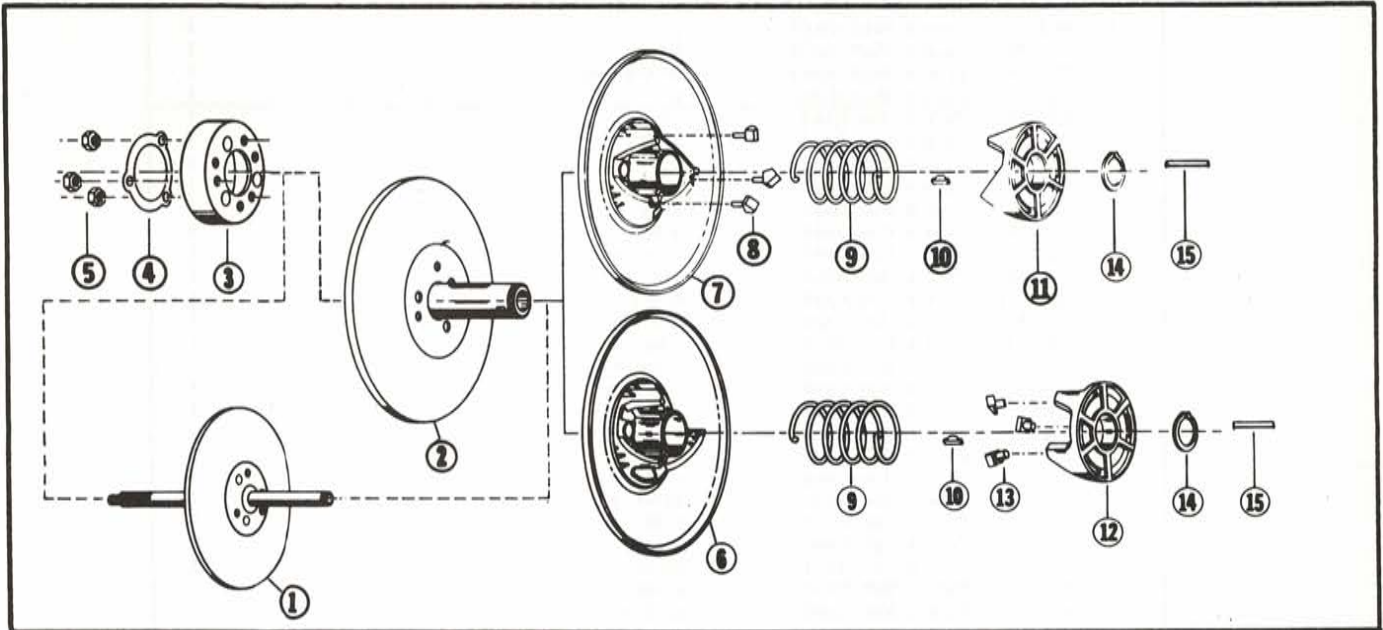
This unit is particularly preferred for high speed racing requirements on vehicles such as snowmobiles.

FOR INSTALLATION DIMENSION, SEE REVERSE

# MODELS 500, 700, 770, 780, 790 DRIVEN PULLEY

(TORQUE SENSITIVE)

## ILLUSTRATED PARTS LIST



## MODELS 500, 700, 770, 780, 790 DRIVEN PULLEYS BY ASSEMBLY NUMBER

Assembly Usage Code	Assembly Number	Model/Bore Size
a	138900	770, 3/4 in.
b	138901	770, 1 in.
c	138902	770, 7/8 in.
d	139700	770, 3/4 in. bdr
e	139701	770, 1 in. bdr
f	139702	770, 7/8 in. bdr
g	139900	790, 3/4 in.
h	139901	790, 1 in.
j	140200	790, 3/4 in. int.
k	140300	780, 3/4 in.
l	140301	780, 7/8 in.
m	140302	780, 1 in.
n	140400	780, 3/4 in. int.
p	140401	780, 3/4 in. int.
q	140600	770, 3/4 in. bfl
r	140601	770, 7/8 in. bfl
s	140602	770, 1 in. bfl
t	140700	780, 3/4 in. bdr
u	140701	780, 7/8 in. bdr
v	140702	780, 1 in. bdr
w	141100	780, step int.
x	141101	780, step int.
y	141200	700, 3/4 in.
z	141201	700, 7/8 in.
aa	141202	700, 1 in.
ab	141203	700, 3/4 in. short
ac	141204	700, 1 in.
ad	143000	780, 3/4 in. wbf
ae	143001	780, 7/8 in. wbf
af	143002	780, 1 in. wbf
ag	143500	500, 3/4 in.
ah	143501	500, 7/8 in.
aj	143502	500, 1 in.
ak	143600	700, 3/4 in.
al	143601	700, 7/8 in.
am	143602	700, 1 in.
an	143603	700, 3/4 in short

Assembly Usage Code	Assembly Number	Model/Bore Size
ap	143700	770, 3/4 in.
aq	143701	770, 7/8 in.
ar	143702	770, 1 in.
as	143800	780, 3/4 in.
at	143801	780, 7/8 in.
au	143802	780, 1 in.
av	143803	780, 25mm
aw	143804	780, 7/8 in.
ax	143805	780, 3/4 in.
ay	143900	790, 3/4 in.
az	143901	790, 7/8 in.
ba	143902	790, 1 in.
bb	144200	780, 3/4 in. wbf
bc	144201	780, 7/8 in. wbf
bd	144202	780, 1 in. wbf
be	144203	780, 3/4 in. wbf
bf	144204	780, 7/8 in. wbf
bg	144205	780, 1 in. wbf
bh	144500	780, step int.
bj	144501	780, step int.
bk	144800	770, 3/4 in. bfl
bl	144801	770, 7/8 in. bfl
bm	144802	770, 1 in. bfl
bn	144803	770, 3/4 in. bfl
bp	145100	780, 3/4 in. bdr
bq	145101	780, 7/8 in. bdr
br	145102	780, 1 in. bdr
bs	145103	780, 3/4 in. bdr
bt	145104	780, 7/8 in. bdr
bu	145105	780, 1 in. bdr
bv	145300	500, 3/4 in. bdr
bw	145301	500, 7/8 in. bdr
bx	145302	500, 1 in. bdr
by	146100	780, 3/4 in.
bz	146101	780, 7/8 in.
ca	146102	780, 1 in.

int. = integral shaft    bfl = brake flange    wbf = wide brake flange    bdr = brake drum



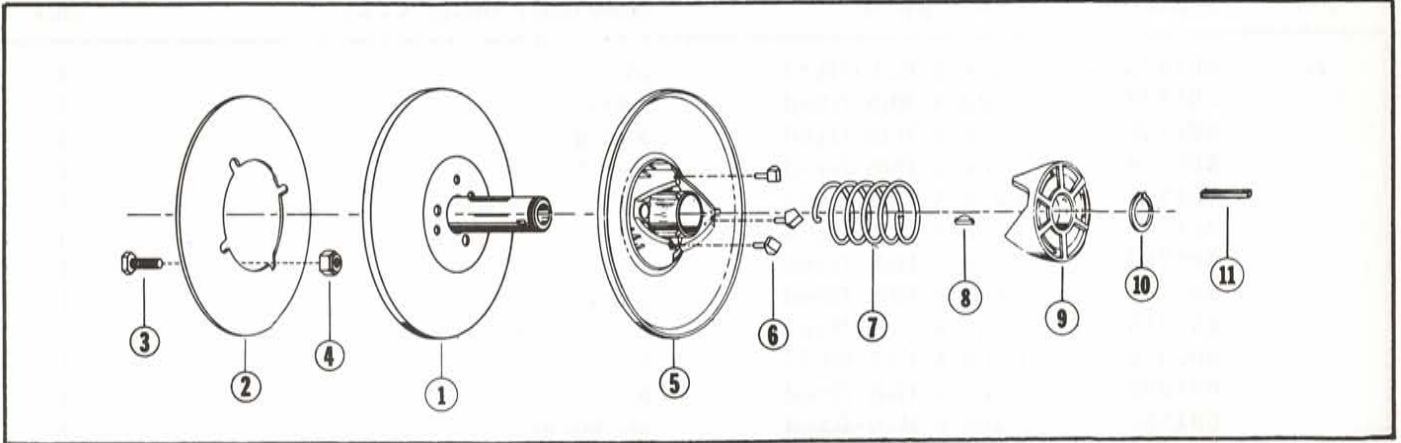
A DIVISION OF **ISC** INSTRUMENT SYSTEMS CORPORATION

1010 EAST 62nd STREET, LOS ANGELES, CALIFORNIA 90001 • PHONE (213) 232-6181

# MODEL 850 and 860 DRIVEN PULLEY

(TORQUE SENSITIVE)

## ILLUSTRATED PARTS LIST



## MODEL 850 and 860 DRIVEN PULLEYS BY ASSEMBLY NUMBER

Assembly Usage Code	Assembly Number	Model/Bore Size
a	147600	850, 3/4 in.
b	147601	850, 7/8 in.
c	147602	850, 1 in.
d	147603	850, 3/4 in.
e	147604	850, 7/8 in.
f	147605	850, 1 in.
g	147606	850, 3/4 in.
h	147607	850, 7/8 in.
j	147608	850, 1 in.
k	147609	850, .9855 in.
l	147610	850, .9855 in.
m	147611	850, 1 in.
n	147612	850, 1 in.
p	147613	850, 7/8 in.
q	147614	850, 1 in.
r	147615	850, 3/4 in.
s	147700	850, 1 in. bd
t	147800	860, 1 in.
u	147801	860, 1 in.
v	147802	860, 1 in.
w	147803	860, 1 in.
x	147804	860, 1 in.
y	147805	860, 7/8 in.

Assembly Usage Code	Assembly Number	Model/Bore Size
z	147806	860, 1 in.
aa	147807	860, 1 in.
ab	147808	860, 1 in.
ac	147809	860, 3/4 in.
ad	147810	860, 7/8 in.
ae	147900	860, .9855 in. bd
af	147901	860, .9855 in. bd
ag	147902	860, 1 in. bd
ah	147903	860, 3/4 in. bd
aj	147904	860, 7/8 in. bd
ak	148900	850, 3/4 in. bfl
al	148901	850, 7/8 in. bfl
am	148902	850, 1 in. bfl
an	148903	850, 3/4 in. bfl
ap	148904	850, 7/8 in. bfl
aq	148905	850, 1 in. bfl
ar	148906	850, 3/4 in. bfl
as	148907	850, 7/8 in. bfl
at	148908	850, 1 in. bfl
au	148909	850, 1 in. bfl
av	149200	860, 3/4 in. bfl
aw	149201	860, 1 in. bfl
ax	149202	860, 1 in. bfl

bd = brake disc    bfl = brake flange



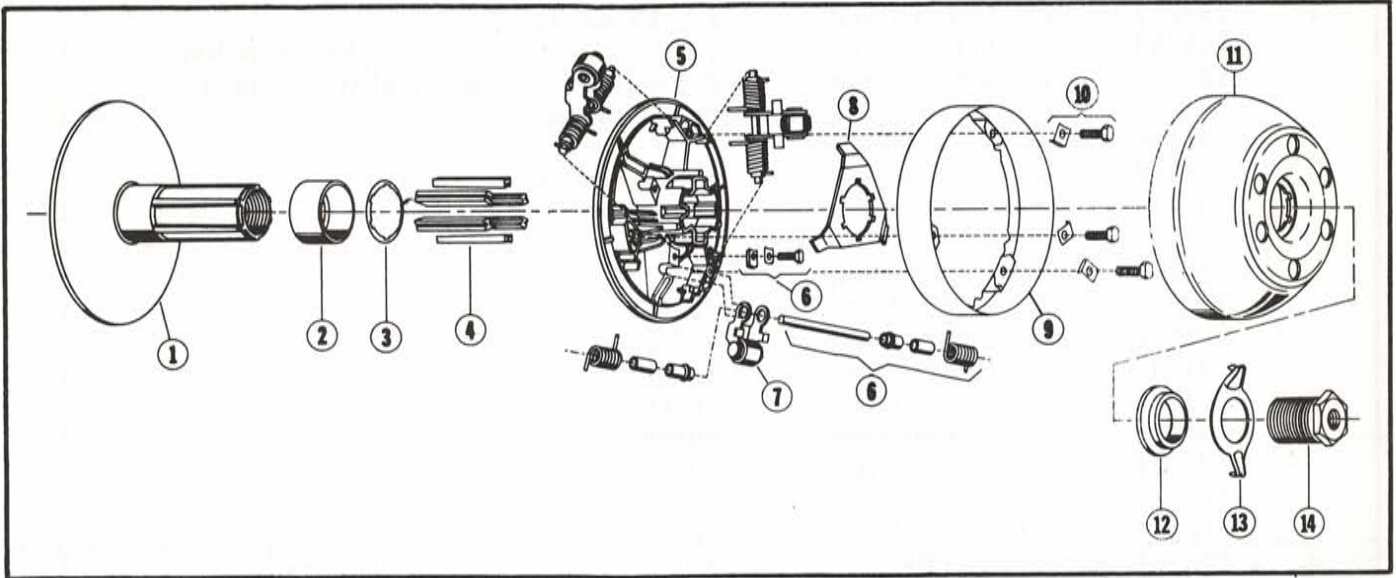
A DIVISION OF **isc** INSTRUMENT SYSTEMS CORPORATION

1010 EAST 62nd STREET, LOS ANGELES, CALIFORNIA 90001 • PHONE (213) 232-6181

Replaces  
Form No. S72-2-20

# MODEL 780 DRIVE PULLEY (SPLINE DRIVE) ILLUSTRATED PARTS LIST

7-72



## MODEL 780 DRIVE PULLEYS BY ASSEMBLY NUMBER

Assembly Usage Code	Assembly Number	Tapered Bore	Engine Adaptability
a	143200	25 mm	. 110 inset
b	143201	24 mm	. 160 offset
c	143202	25 mm	. 110 inset
d	143203	30 mm	. 200 offset
e	143204	25 mm	. 160 offset
f	143205	30 mm	. 190 inset
g	143206	25 mm	. 110 inset
h	143207	30 mm	. 200 offset
j	143208	25 mm	. 160 offset
k	143209	30 mm	. 190 inset
l	143210	30 mm	Flush
m	143211	30 mm	Flush
n	143212	30 mm	Flush
p	143213	24 mm	. 160 offset
q	143214	30 mm	Flush
r	143215	30 mm	Flush
s	143216	24 mm	. 160 offset
t	143217	25 mm	. 110 inset
u	143218	30 mm	. 200 offset
v	143219	30 mm	. 190 inset
w	143220	25 mm	. 160 offset
x	143221	30 mm	Flush
y	143223	25 mm	. 210 inset
z	143224	30 mm	Flush

Assembly Usage Code	Assembly Number	Tapered Bore	Engine Adaptability
aa	143225	30 mm	. 200 offset
ab	143226	30 mm	. 190 inset
ac	143227	30 mm	. 190 inset
ad	143228	30 mm	. 200 offset
ae	143229	25 mm	. 110 inset
af	143230	30 mm	. 200 offset
ag	143231	30 mm	. 380 inset
ah	143232	30 mm	. 200 offset
aj	143233	30 mm	. 200 offset
ak	143234	24 mm	Flush
al	143235	30 mm	. 200 offset
am	143236	25 mm	. 160 offset
an	143237	23.5 mm	. 625 inset
ap	143238	30 mm	. 190 inset
aq	143239	25 mm	. 110 inset
ar	143240	30 mm	. 200 offset
as	143241	24 mm	Flush
at	143242	30 mm	Flush
au	143243	30 mm	. 200 offset
av	143244	30 mm	Flush
aw	143245	25 mm	. 110 inset
ax	143248	30 mm	. 200 offset
ay	143249	30 mm	Flush
az	143250	30 mm	. 200 offset

Assembly Usage Code	Assembly Number	Tapered Bore	Engine Adaptability
ba	143251	30 mm	. 200 offset
bb	143252	25 mm	. 160 offset
bc	143253	30 mm	Flush
bd	143254	30 mm	Flush
be	143255	30 mm	. 200 offset
bf	143256	25 mm	. 110 inset
bg	146400	30 mm	. 200 offset r/fl
bh	146401	30 mm	. 190 inset r/fl
bj	146402	25 mm	. 110 inset
bk	146403	30 mm	. 200 offset r/fl
bl	146404	30 mm	Flush r/fl
bm	146405	30 mm	Flush r/fl
bn	149000	30 mm	. 200 offset
bp	149001	30 mm	Flush
bq	149100	25 mm	. 110 inset
br	149101	24 mm	. 160 offset
bs	149102	23.5 mm	. 625 inset
bt	149103	30 mm	. 200 offset
bu	149104	25 mm	. 160 offset
bv	149105	30 mm	Flush
bw	149106	30 mm	Flush
bx	149107	30 mm	. 200 offset
by	149108	25 mm	. 110 inset
bz	149109	30 mm	Flush

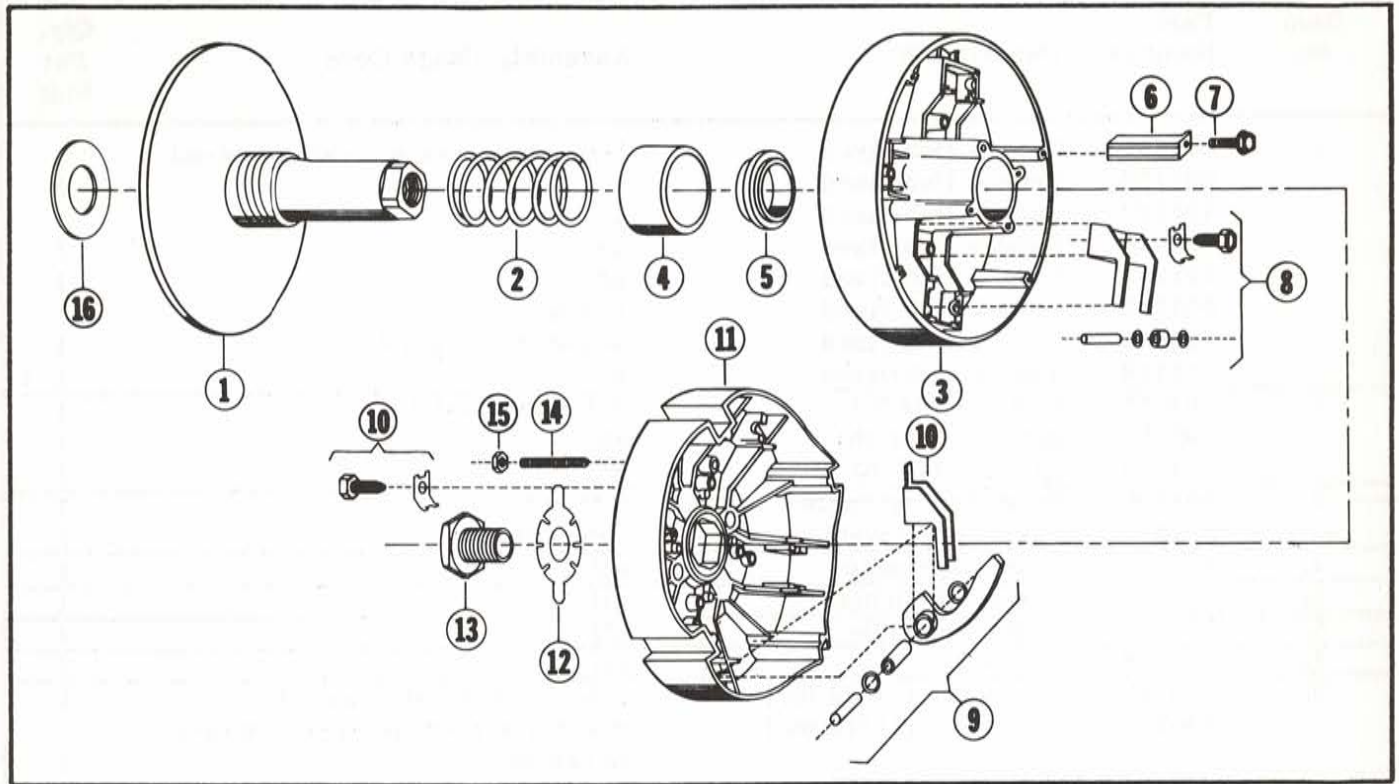
r/fl = return flange



1010 EAST 62nd STREET, LOS ANGELES, CALIFORNIA 90001 • PHONE (213) 232-6181

# 800 SERIES DRIVE PULLEY

## ILLUSTRATED PARTS LIST



### 800 SERIES DRIVE PULLEYS BY ASSEMBLY NUMBER

Assembly Usage Code	Assembly Number	Bore	Engine Adaptability
a	148400	30 mm	Flush
b	148401	30 mm	Flush
c	148402	30 mm	Flush
d	148403	30 mm	Flush
e	148404	30 mm	Flush
f	148405	30 mm	Flush
g	148406	30 mm	Flush
h	148407	30 mm	.200 Inset
j	148408	30 mm	Flush
k	148409	30 mm	Flush
l	148600	30 mm	Flush
m	148601	30 mm	Flush
n	148602	30 mm	Flush
p	148603	30 mm	Flush
q	148604	30 mm	Flush

Assembly Usage Code	Assembly Number	Bore	Engine Adaptability
r	148605	30 mm	.630 Inset
s	148606	30 mm	.630 Inset
t	148607	30 mm	Flush
u	148608	30 mm	Flush
v	148700	25 mm	Flush
w	148701	30 mm	Flush
x	148702	35 mm	Flush
y	148703	30 mm	.630 Inset
z	148704	30 mm	Flush
aa	148705	30 mm	Flush
ab	148706	30 mm	Flush
ac	148707	30 mm	Flush
ad	148708	30 mm	Flush
ae	690233	3/4 in.	Rotax
af	690234	7/8 in.	Rotax

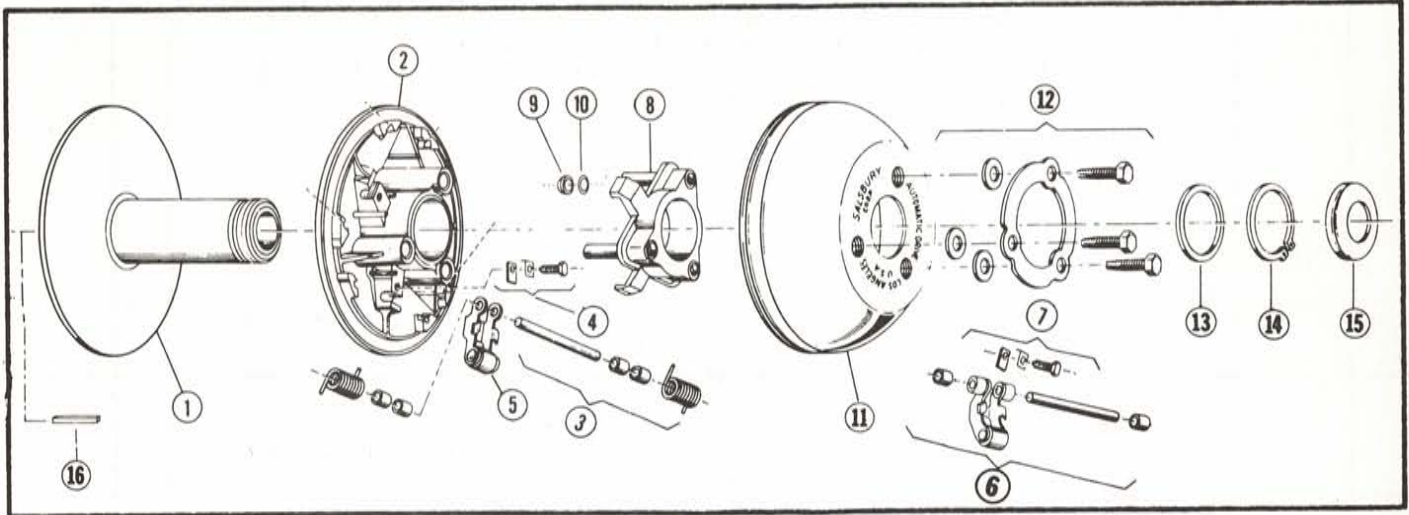


A DIVISION OF **ISIC** INSTRUMENT SYSTEMS CORPORATION

1010 EAST 62nd STREET, LOS ANGELES, CALIFORNIA 90001 • PHONE (213) 232-6181

# MODELS 700, 705, 770, 775, 780, 790, 795 DRIVE PULLEY and 7000 VARI-CON CONTROL PULLEY (SPIDER DRIVE)

## ILLUSTRATED PARTS LIST



## 700 AND 7000 SERIES PULLEYS BY ASSEMBLY NUMBER

Assembly Usage Code	Assembly Number	Bore	Engine Adaptability
a	141300	24mm	.160 offset
b	141301	25mm	.110 inset
c	141302	30mm	.200 offset
d	141303	25mm	.160 offset
e	141304	30mm	.190 inset
f	141306	25mm	.110 inset
g	141307	30mm	.200 offset
h	141308	25mm	.160 offset
j	141309	30mm	.190 inset
k	141310	25mm	.110 inset
l	141311	30mm	flush
m	141312	30mm	flush
n	141313	30mm	flush
p	141314	24mm	.160 offset
q	141315	30mm	flush
r	141316	30mm	flush
s	141317	24mm	.160 offset
t	141318	25mm	.110 inset
u	141319	30mm	.200 offset
v	141320	30mm	.190 inset
w	141321	25mm	.160 offset
x	141322	30mm	flush
y	141323	30mm	flush
z	141324	30mm	flush
aa	141325	30mm	flush
ab	141500	25mm	.210 inset
ac	141501	30mm	.200 offset
ad	141502	25mm	.210 inset
ae	141600	3/4 in.	straight
af	141601	1 in.	straight
ag	141602	3/4 in.	straight
ah	141603	1 in.	straight
aj	141604	3/4 in.	straight
ak	141605	1 in.	straight
al	141606	1 in.	straight
am	141607	1 in.	straight
an	141700	3/4 in.	straight
ap	141701	1 in.	straight

Assembly Usage Code	Assembly Number	Bore	Engine Adaptability
aq	141702	3/4 in.	straight
ar	141703	1 in.	straight
as	141704	1 in.	straight
at	141705	3/4 in.	straight
au	141706	1 in.	straight
av	141707	1 in.	straight
aw	141708	1 in.	straight
ax	141709	1 in.	straight
ay	141800	24mm	.160 offset
az	141801	25mm	.210 inset
ba	141802	30mm	flush
bb	141803	25mm	.110 inset
bc	141804	30mm	.190 inset
bd	141805	25mm	.210 inset
be	141806	30mm	flush
bf	141807	30mm	.190 inset
bg	141900	24mm	.160 offset
bh	141901	25mm	.210 inset
bj	141902	30mm	flush
bk	141903	30mm	.200 offset
bl	141904	30mm	flush
bm	141905	25mm	.210 inset
bn	141906	25mm	.110 inset
bp	141907	25mm	.210 inset
bq	141908	25mm	.160 offset
br	141909	30mm	.200 offset
bs	141910	30mm	flush
bt	141911	30mm	.190 inset
bu	141912	25mm	.210 inset
bv	141913	24mm	.160 offset
bw	141914	30mm	flush
bx	141915	30mm	.200 offset
by	142000	1 in.	straight
bz	142001	.670 in.	straight
ca	142002	3/4 in.	straight
cb	142400	30mm	flush
cc	142401	30mm	.190 inset
cd	143400	1 in.	straight
ce	146800	25mm	.110 inset



A DIVISION OF **ISC** INSTRUMENT SYSTEMS CORPORATION

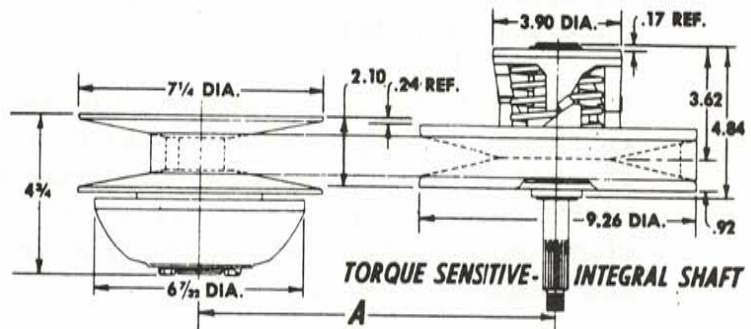
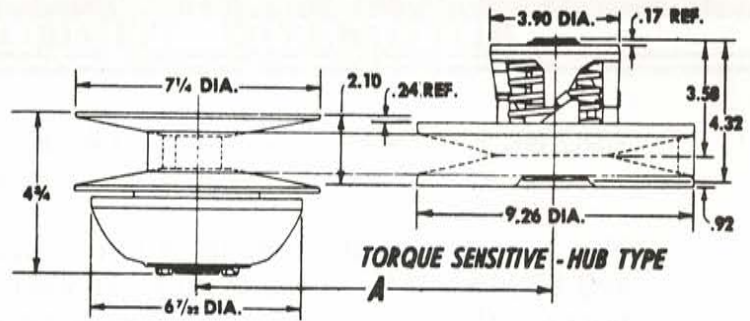
1010 EAST 62nd STREET, LOS ANGELES, CALIFORNIA 90001 • PHONE (213) 232-6181

### OPTIONAL SPECIFICATIONS:

Optional specifications include a tapered drive pulley bore for 2-cycle engines, as well as a standard 1" straight bore. Driven pulley adaptations include 3/4", 7/8", and 1" bores, and integral shaft as illustrated (see Form 69D8 for standard specifications).

Engagement speed and shift patterns are altered by selecting heavier or lighter centrifugal weights.

For pulley mounting centers on Dimension "A", see Form 67D35 for a complete selection of belt lengths.



### WARRANTY

Our products are warranted to be free from defects of material or workmanship for a period of 90 days from date of shipment from our factory in Los Angeles, California. In case of failure within this period, the article shall be returned prepaid to the factory in Los Angeles, California where it will be examined to determine the cause of failure. If failure is found to have been caused by defective material or workmanship such defects will be corrected at no cost to the purchaser. Our liability, however, is limited in any event to the purchase price of any item proven defective, or, at our option, to the replacement of such item upon its return to us making

due allowance for the service rendered. Any failure which is found to be due to accident, abuse or negligence, shall result in repairs being charged for at established prices for material and labor. This warranty becomes void if belts other than approved by us have been used, if unit is caused to operate at speeds over recommended maximum, or if service has been attempted other than by personnel authorized in writing by factory. This warranty being expressly in lieu of all other warranties and representations expressed or implied and of all other liabilities in connection with the sale or use of any unit.

**SALSBUURY**  
CORPORATION

Form 69D9

# MODELS 500, 700, 770, 780, 790 DRIVEN PULLEY

Item No.	Part Number	Description	Assembly Usage Code	Qty. Per Unit
1.	601171	Face & Shaft-fixed	j	1
	601178	Face & Shaft-fixed	n	1
	601239	Face & Shaft-fixed	w-x-bh-bj	1
	601287	Face & Shaft-fixed	p	1
2.	601124	Face & Hub-fixed	a-ap	1
	601135	Face & Hub-fixed	b-ar	1
	601142	Face & Hub-fixed	d	1
	601143	Face & Hub-fixed	e	1
	601144	Face & Hub-fixed	g-ay	1
	601145	Face & Hub-fixed	h-ba	1
	601175	Face & Hub-fixed	k-as-ax	1
	601176	Face & Hub-fixed	l-at-aw	1
	601177	Face & Hub-fixed	m-au	1
	601189	Face & Hub-fixed	q-bk-bn	1
	601194	Face & Hub-fixed	t-bp-bs	1
	601195	Face & Hub-fixed	u-bq-bt	1
	601196	Face & Hub-fixed	v-br-bu	1
	601197	Face & Hub-fixed	c-aq	1
	601203	Face & Hub-fixed	f	1
	601205	Face & Hub-fixed	y-ak	1
	601206	Face & Hub-fixed	z-al	1
	601207	Face & Hub-fixed	aa-ac-am	1
	601277	Face & Hub-fixed	r-bl	1
	601278	Face & Hub-fixed	s-bm	1
	601292	Face & Hub-fixed	ab-an	1
	601300	Face & Hub-fixed	ad-bb-be	1
	601301	Face & Hub-fixed	ae-bc-bf	1
	601302	Face & Hub-fixed	af-bd-bg	1
	601370	Face & Hub-fixed	az	1
	601396	Face & Hub-fixed	ag	1
	601397	Face & Hub-fixed	ah	1
	601398	Face & Hub-fixed	aj	1
	601408	Face & Hub-fixed	bv	1
	601409	Face & Hub-fixed	bw	1
	601410	Face & Hub-fixed	bx	1
	601483	Face & Hub-fixed	av	1
601663	Face & Hub-fixed	by	1	
601665	Face & Hub-fixed	bz	1	
601666	Face & Hub-fixed	ca	1	
3.	702966	. Drum-brake, 4 in. dia.	d-e-f-t-u-v-bp-bq-br-bs-bt-bu-bv-bw-bx	1
4.	702915	. Lockplate	d-e-f-t-u-v-bp-bq-br-bs-bt-bu-bv-bw-bx	1
5.	900176	. Nut-hex	d-e-f-t-u-v-bp-bq-br-bs-bt-bu-bv-bw-bx	3
6.	601125	Face Asy-movable, 35°	a-b-c-d-e-f-q-r-s	1
	601146	Face Asy-movable, 35°	g-h	1
	601172	Face Asy-movable, 41°	j	1
	601173	Face Asy-movable, 41°	k-l-m-t-u-v-ad-ae-af	1
	601179	Face Asy-movable, 41°	n-p	1
	601208	Face Asy-movable, 41°	y-z-aa-ab-ac	1
	601241	Face Asy-movable, 41°	w-x	1
	7.	601336	Face Asy-movable	ag-ah-aj-bv-bw-bx
601337		Face Asy-movable	ak-al-am-an	1
601338		Face Asy-movable	ap-aq-ar-bk-bl-bm-bn	1
601339		Face Asy-movable	as-at-au-av-aw-ax-bb-bc-bd-be-bf-bg-bp-bq-br-bs-bt-bu	1
601340		Face Asy-movable	ay-az-ba	1
601353		Face Asy-movable	bh-bj	1
601664		Face Asy-movable	by-bz-ca	1
8.	703113	. Slipper-cam	ag thru ca	3
9.	702970	Spring-5 coil plain	All, except av-aw-ax-be-bf-bg-bj-bn-bs-bt-bu	1
	703246	Spring-7 coil yellow	av-aw-ax-be-bf-bg-bj-bn-bs-bt-bu	1
10.	901687	Key	All	1
11.	703219	Bracket-torque, 41°	ag thru au, ax thru bg, bk thru ca	1
	703274	Bracket-torque, 35°	av-aw	1
	703278	Bracket-torque, 41°	bh-bj	1
12.	601127	Bracket Asy-torque	a-b-c-d-e-f-g-h-k-l-m-q-r-s-t-u-v-y-z-aa-ab-ad-ae-af	1
	601154	Bracket Asy-torque	j-n-p	1
	601243	Bracket Asy-torque	w-x	1
	601334	Bracket Asy-torque	ac	1
	702984	. Slipper-cam	a thru af	3
14.	900009	Ring-retaining	All, except j-n-p-w-x-bh-bj	1
	901228	Ring-retaining	j-n-p	1
	901703	Ring-retaining	w-x-bh-bj	1
15.	700306	Key-drive	b-e-h-m-s-v-aa-ac-af-aj-am-ar-au-ba-bd-bg-bm-br-bu-bx-ca	1



# MODEL 850 and 860 DRIVEN PULLEY

Item No.	Part Number	Description	Assembly Usage Code	Qty Per Unit
1.	601375	Face & Hub-fixed	av	1
	601377	Face & Hub-fixed	aw-ax	1
	601745	Face & Hub-fixed	a-d-g-r	1
	601746	Face & Hub-fixed	b-e-h	1
	601747	Face & Hub-fixed	c-f-j-m-n-q	1
	601748	Face & Hub-fixed	k-l	1
	601753	Face & Hub-fixed	ac	1
	601754	Face & Hub-fixed	y-ad	1
	601755	Face & Hub-fixed	t-u-v-w-x-z-aa	1
	601804	Face & Hub-fixed	ab	1
	601806	Face & Hub-fixed	p	1
	601821	Face & Hub-fixed	ak-an-ar	1
	601822	Face & Hub-fixed	al-ap-as	1
	601823	Face & Hub-fixed	am-aq-at	1
	601824	Face & Hub-fixed	au	1
	601837	Face & Hub-fixed	ah	1
	601838	Face & Hub-fixed	aj	1
601839	Face & Hub-fixed	s-ag	1	
601840	Face & Hub-fixed	ae-af	1	
2.	703690	Disc-brake	s-ae-af-ag-ah-aj	1
3.	901769	Screw-hex 5/16-24	s-ae-af-ag-ah-aj	4
4.	901770	Nut-hex 5/16-24	s-ae-af-ag-ah-aj	4
5.	601769	Face Asy-movable	a thru n-q-r-s-ak-al-am-an-ap-aq-ar-as-at	1
	601770	Face Asy-movable	t-u-v-w-x-y-z-aa-ac-ad-ae-af-ag-ah-aj-av-aw-ax	1
	601805	Face Asy-movable	ab	1
	601807	Face Asy-movable	p-au	1
	6.	703113	. Slipper-cam	all
7.	702970	Spring - 5 coil plain	a-b-c-p-q-r-s-u-x-z-ab-ac-ad-ag-ah-aj-an-ap-aq-ar-as-at-an-aw-ax	1
	703102	Spring - 7 coil black	m-n-w	1
	703246	Spring - 7 coil yellow	d-e-f-g-h-j-k-l-t-v-y-aa-ae-af-ak-al-am-au	1
8.	901687	Key	all	1
9.	703219	Cam-torque, 41°	a-b-c-d-e-f-l-n-u-v-y-ak-al-am	
	703274	Cam-torque, 35°	g-h-j-k-m-q-r-s-w-x-aa-ac-ad-ae-ag-ah-aj-an-ap-aq-au-av-aw	1
	703703	Cam-torque, 32°	p-t-z-ab-af-ar-as-at-ax	1
10.	900009	Ring-retainer	all	1
11.	700306	Key-drive	c-f-j-m-n-q-s-t-u-v-w-x-z-aa-ab-ac-ag-am-aq-at-au-aw-ax	1

# MODEL 780 DRIVE PULLEY

Item No.	Part Number	Description	Assembly Usage Code	Qty. Per Unit
1.	703252	Face & Hub-fixed	f-k-ab-ac-ap-bh	1
	703253	Face & Hub-fixed	l-m-n-q-r-x-z-at-av-ay-bc-bd-bl-bm	1
	703254	Face & Hub-fixed	d-h-u-aa-ad-af-ah-aj-al-ar-au-ax-az- ba-be-bg-bk	1
	703255	Face & Hub-fixed	y	1
	703256	Face & Hub-fixed	a-c-g-t-ae-aq-aw-bf-bj	1
	703257	Face & Hub-fixed	e-j-w-am-bb	1
	703258	Face & Hub-fixed	b-p-s	1
	703388	Face & Hub-fixed	ag	1
	703551	Face & Hub-fixed	ak-as	1
	703560	Face & Hub-fixed	an	1
	703767	Face & Hub-fixed	bp-bv-bw-bz	1
	703768	Face & Hub-fixed	bn-bt-bx	1
	703770	Face & Hub-fixed	bq-by	1
	703771	Face & Hub-fixed	bu	1
	703772	Face & Hub-fixed	by	1
	703776	Face & Hub-fixed	bs	1
	2.	703191	Bearing-idler	all except bd thru bz (optional)
3.	703192	Washer-idler bearing	all	1
4.	703193	Liner-spline	all	6
5.	703185	Face-movable	all	1
6.	690161	Kit-spring/pin/bushing	a-b-c-d-e-f-l	1
	690162	Kit-spring/pin/bushing	g-h-j-k-m-n-p-y-z-aa-ac-ae-ag-am-bf- bh-bl-by	1
	690163	Kit-spring/pin/bushing	q-r-s-t-u-v-w-x-ab-ad-ak-al-an-ap-aq- as-at-au-aw-az-bc-bk-bm-bp-br-bs-bu	1
	690170	Kit-spring/pin/bushing	af-ah-aj-ar-ax-ay-ba-bb-bd-be-bg-bj- bn-bq-bt-bu-bw-bx-bz	1
	690223	Kit-spring/pin/bushing	av	1
7.	690164	Kit-roller arm	a-b-c-d-e-f-l-r-s-t-u-v-w-x-aa-ac-ae- af-ag-am-an-aq-ar-as-at-au-aw-bm-be- bp-br-bs-bx	1
	690165	Kit-roller arm	g-h-j-k-m-n-p-q-y-z-ab-ad-ak-al-ap-av- ax-ay-ba-bb-bc-bf-bg-bh-bj-bl-bn-bt-bu- bv-by-bz	1
	690175	Kit-roller arm	ah	1
	690205	Kit-roller arm	aj	1
	690218	Kit-roller arm	bd-bq-bw	1
	690227	Kit-roller arm	bk	1
	8.	703194	Retractor	all
9.	601647	Flange-return	bg-bh-bk-bl-bm-bn-bp	1
10.	690216	Kit-screw/lockplate	bg-bh-bk-bl-bm-bn-bp	1
11.	601330	Plate Asy-ramp	a-b-c-d-e-f-g-h-j-k-l-m-n-p-q-r-s-t-u- v-w-x-y-z-aa-ab-ac-ad-ae-ag-br	1
	601446	Plate Asy-ramp	af-ap-aw-ax-ay-az-bh-bj-bk-bl-bq-bz	1
	601486	Plate Asy-ramp	ah-aj-ak-al-am-an-aq-ar-as-at-au-av-ba- bb-bc-bd-be-bf-bg-bm-bn-bp-bs-bt-bu-bv- bw-bx-by	1
12.	703200	. Washer-ramp plate	all	1
13.	703245	. Lockplate-ramp plate	all	1
14.	703208	Nut-ramp plate	all	1

# 800 SERIES DRIVE PULLEY

Item No.	Part Number	Description	Assembly Usage Code	Qty. Per Unit
1.	601737	Face & Hub-fixed	l-m-n-p-q-t-u-w-z-aa-ab-ac-ad	1
	601738	Face & Hub-fixed	v	1
	601739	Face & Hub-fixed	x	1
	601740	Face & Hub-fixed	ae	1
	601741	Face & Hub-fixed	af	1
	601773	Face & Hub-fixed	r-s-y	1
	703620	Face & Hub-fixed	a-b-c-d-e-f-g-j-k	1
	703778	Face & Hub-fixed	h	1
2.	703626	Spring - (84 lb)	All except g-l-ab	1
	703701	Spring - (100 lb)	ab	1
	703729	Spring - (72 lb)	g-l	1
3.	601800	Face Asy-movable	a thru k	1
	601815	Facy Asy-movable	l thru af	1
4.	*	. Bearing-center	all	1
5.	*	. Bearing-flange	all	1
6.	703741	. Bearing-slide	all	4
7.	901796	. Screw	all	4
8.	690255	Kit-roller (19/32 in.)	a-b-c-g-h-l-p-t-y-aa-ad	1
	690256	Kit-roller (11/16 in.)	d-e-f-j-k-m-n-q-r-s-u-v-w-x-z	1
	690257	Kit-roller (3/4 in.)	ac-ae-af	1
			ab	1
9.	690252	Kit-arm (Blue)	b-e-v-u-x-ab-ad	1
	690253	Kit-arm (Yellow)	a-d-y-aa	1
	690254	Kit-arm (White)	z-ac	1
	690258	Kit-arm (Purple)	c-f-g-h-j-l-m-n-q-r-t-ae-af	1
	690272	Kit-arm (Plain)	p	1
	690273	Kit-arm (Orange)	k-s	1
	690274	Kit-arm (D. Green)	u	1
	10.	690267	Kit-clamp, arm (flat)	a-b-c-d-e-h-j-l-m-p-r-t
690269		Kit-clamp, arm (43°)	f-k-q-s	1
690270		Kit-clamp, arm (w/o)	n-u-v-w-x-y-z-aa-ab-ac-ad-ae-af	1
690271		Kit-clamp, arm (40°)	g	1
703739		Housing	all	1
12.	703749	Lockplate	all	1
13.	703631	Screw-special	all	1
14.	901779	Screw-set	v thru af	4
15.	901780	Nut-hex hd.	v thru af	4
16.	901790	Spacer (3/4 x .060)	ae	2
	901791	Spacer (3/4 x .030)	ae	2
	901792	Spacer (7/8 x .030)	af	2
	901793	Spacer (7/8 x .060)	af	2
Accessories				
	601515	Tool-Dismount	all except ae-af	

\* Included with movable face assy, however, not individually available at this time.

# MODELS 700, 705, 770, 775, 780, 790, 795, 7000 PULLEY

Item No.	Part Number	Description	Assembly Usage Code	Qty. Per Unit
1.	600771	Face & Hub-fixed	a-p-s-ay-bg-bv	1
	600828	Face & Hub-fixed	ae-ag-aj-an-aq-at-ca	1
	600829	Face & Hub-fixed	af-ah-ak-al-am-ap-ar-as-au-av-aw-ax-by	1
	600983	Face & Hub-fixed	ab-ad-az-bd-bh-bm-bp-bu	1
	600984	Face & Hub-fixed	l-m-n-q-r-x-y-z-aa-ba-be-aj-bl-bs-bw-cb	1
	601037	Face & Hub-fixed	c-g-u-ac-bk-br-bx	1
	601044	Face & Hub-fixed	bz	1
	601077	Face & Hub-fixed	b-f-k-t-bb-bn-ce	1
	601123	Face & Hub-fixed	d-h-w-bq	1
	601190	Face & Hub-fixed	e-j-v-bc-bf-bt-cc	1
601445	Face & Hub-fixed	cd	1	
2.	601217	Face-movable	All except cd	1
	601344	Face-movable	cd	1
3.	690112	Kit-spring	a-b-c-d-e-k-l-ag-ah-aj-ak-am-an-ap-aq-ar-as-aw-ax-be-bv-cc	1
	690113	Kit-spring	aa-ab-ac-ae-af-al-at-au-av-ay-az-ba-bg-bh-bj-bk-bl-bm-bn-bu-ca	1
	690128	Kit-spring	q-r-s-t-u-v-w-x-y-z	1
	690158	Kit-spring	f-g-h-j-m-n-p-ad-bb-bc-bd-bf-bp-bq-br-bs-bt-bw-bx-by-bz-cb	1
	690223	Kit-spring	ce	1
4.	690216	Kit-mounting	All except cd	1
5.	690004	Kit-roller arm	aa-ab-ac-ae-af-ag-ah-an-ap-af-au-ay-az-ba-bg-bh-bj-bk-bl-bm-bn	1
	690020	Kit-roller arm	y-bf	1
	690021	Kit-roller arm	f-g-h-j-m-n-p-q-z-ad-bb-bc-bd-bp-bq-br-bs-bt-bw-by-bz-cb	1
	690056	Kit-roller arm	aj-ak-aq-ar	1
	690065	Kit-roller arm	al-as-av	1
	690085	Kit-roller arm	bu	1
	690116	Kit-roller arm	a-b-c-d-e-k-l-r-s-t-u-v-w-x-am-aw-be-bv-bx-ca-cc	1
	690165	Kit-roller arm	ce	1
690172	Kit-roller arm	ax	1	
6.	690231	Kit-roller arm	cd	1
7.	690216	Kit-mounting	cd	1
8.	601216	Spider Assembly	All except ab-ac-ad-by-bz-ca-cb-cc-cd	1
	601219	Spider Assembly	ab-ac-ad-by-bz-ca-cb-cc	1
	601472	Spider Assembly	cd	1
9.	700912	Bumper	All	3
10.	701241	Spacer	ab-ac-ad-by-bz-ca-cb-cc	3
11.	702357	Plate-ramp	ab-ac-ae-af-at-au-ay-az-ba-bg-bh-bj-bk-bn-bu	1
	702512	Plate-ramp	ag-ah-aj-ak-al-am-an-ap-aq-ar-as-aw-ax-bl-bm-bw-by-bz-ca	1
	702967	Plate-ramp	a-b-c-d-e-f-g-h-j-k-l-m-n-p-aa-ad-av-bb-bc-bd-bf-bp-bq-br-bs-bt-bv-bx-cb-cc-ce	1
	703176	Plate-ramp	q-r-s-t-u-v-w-x-y-z	1
	703361	Plate-ramp	cd	1
	703527	Plate-ramp	be	1
	690088	Kit-mounting	All	1
12.	703046	Spacer	a thru aa, also ce	1
14.	900009	Ring-retaining	All	1
15.	702978	Washer-retaining	a-b-c-d-e-f-g-h-j-k-l-m-n-p-q-r-s-t-u-v-w-x-y-z-aa-an-aq-at-bg-bh-bj-bk-bl-bm-bn-bp-bq-br-bs-bt-bu-bv-bw-bx-bz-ca-cb-cc-ce	1
	702979	Washer-retaining	ab-ac-ad-ae-ag-aj-ay-az-ba-bb-bc-bd-be-bf	1
	703077	Washer-retaining	ap-ar-as-au-av-aw-ax-by	1
	703150	Washer-retaining	af-ah-ak-al-am-cd	1
	703024	Key-drive	as	1
16.	700306	Key-drive	af-ah-ak-ac-am-ap-ar-au-av-aw-ax-by	1
	703024	Key-drive	as	1