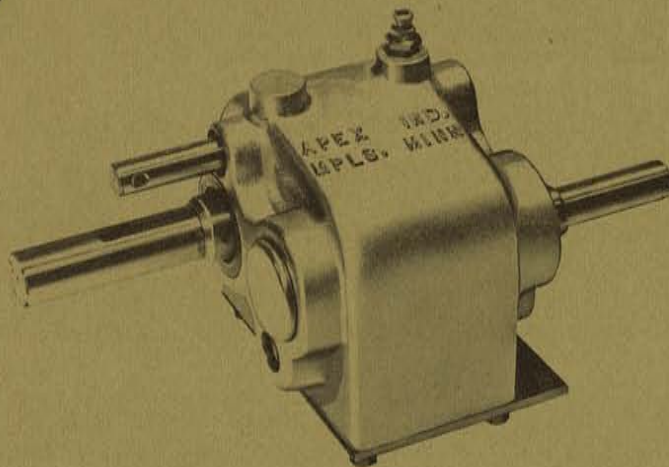


APEX INDUSTRIES



Model 800 Reversing Transmission

Apex Industries has combined imagination with sound engineering and design principles to produce what we call "IMAGINEERED" power transmission products. Every product we sell may be ordered out of stock, after specifying your desired options, or may be altered to meet special applications. Let us put our "IMAGINEERING" concept to work for you to produce lightweight, compact and low maintenance units in any quantity.

The Model 800 Transmission offers one forward speed, neutral and a reverse housed in a strong, one piece aluminum case. Quality tapered roller bearings with automotive type oil seals, combined with hardened alloy steel gears and stressproof shafts provide long life and low maintenance operation.

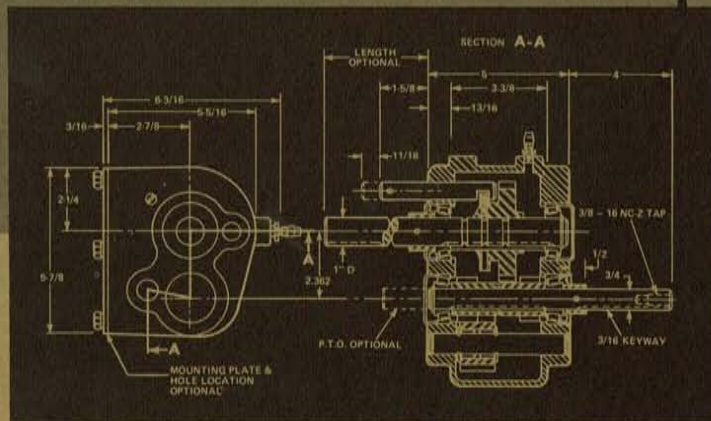
Designed to be adaptable to belt driven torque con-

verters, the Model 800 will operate up to 6,000 R.P.M. with inout horsepowers up to 25 H.P., depending upon application.

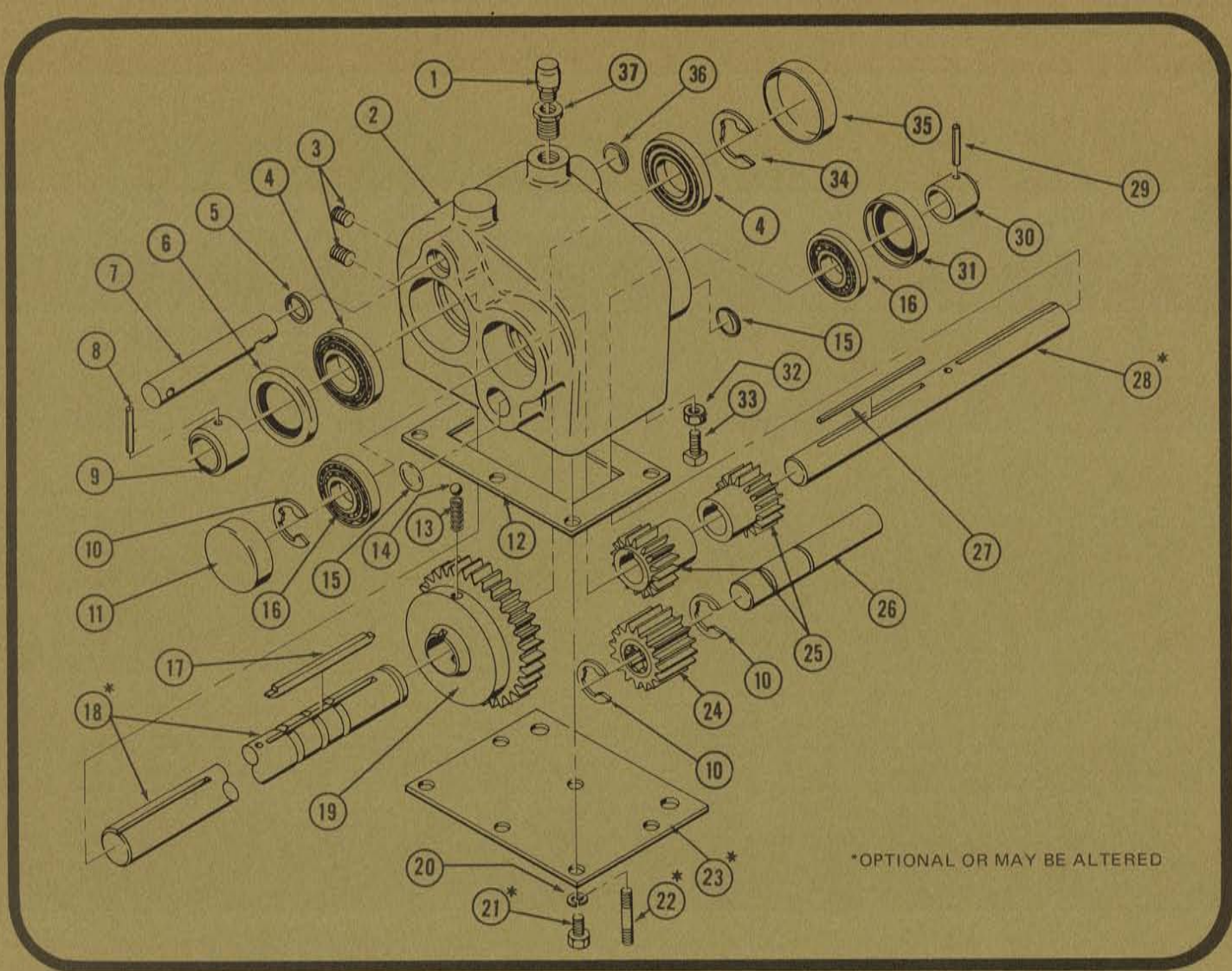
Shown above assembled with right hand input shaft location (output shaft location opposite). Left hand assembly also available. In addition, unit may be assembled with both input and output shafts on same side of case. Please specify assembly desired.

SPECIFICATIONS

Gear Ratios: Forward, 2.36:1.0 — Reverse, 2.36:1.0
 Average Shipping Weight: 14 lbs.
 Options (please specify): Power Take-off Shaft — Input and Output Shaft length, rotation and location — Mounting Plate configuration — Shift Lever Assembly



Additional Information, certified drawings and quotes promptly furnished with no obligation.



*OPTIONAL OR MAY BE ALTERED

PARTS LIST— Model 800 Reversing Transmission

Item	Part No.	Description	Qty.
1	538	BREATHER ASSY. (Incl. 1/4" x 1/8" pipe bush.)	1
2	112	CASE, Aluminium	1
3	527	PLUG, 1/8" Pipe	2
4	514/515	BEARING, Tapered Roller, 1" Cup and Cone	2
5	130	SEAL, Shifter Shaft	1
6	506	SEAL, Output Shaft	1
7	125	SHAFT, Shifter	1
8	530	ROLL PIN, 1/8" x 1-1/4"	1
9	120	COLLAR, Output Shaft	1
10	532	"E" RING, 3/4" Shaft	3
11	534	DUST CAP, 1-3/4"	1
12	124	GASKET, Base Plate	1
13	132	SPRING, Detent Ball	1
14	128	DETENT BALL, 5/16"	1
15	508	EXPANSION PLUG, 3/4"	2
16	512/513	BEARING, Tapered Roller, 3/4" Cup and Cone	2
17	123	KEY, 1/4" x 1/4" x 3-3/4"	1
18	118	SHAFT, Output, 1" (Specify Application)	1
19	126	GEAR, 33 Tooth	1

Item	Part No.	Description	Qty.
20	542	WASHER, 5/16" Spring Lock	6
21	540	CAP SCREW, Hex Hd., 5/16" x 3/4"	6
22	539	STUD, 5/16" x 1-7/16"	2
23	122	BASE PLATE	1
24	127	GEAR, 17 Tooth, Reverse (Incl. 2 no. 129 Brgs.)	1
	129	BEARING, Needle, 3/4" x 5/8" (for no. 127 Gear)	2
25	110	GEAR, Drive Pinion, 14 Tooth	2
26	108	SHAFT, Idler	1
27	517	KEY, 1/8" x 1/8" x 3"	1
28	121	SHAFT, Input, 3/4" (Specify Application)	1
29	529	ROLL PIN, 1/8" x 1"	1
30	119	COLLAR, Input Shaft	1
31	505	SEAL, Input Shaft	1
32	541	NUT, Hex 5/16"	1
33	543	SET SCREW, 5/16" x 3/4"	1
34	531	"E" RING, 1" Shaft	1
35	535	DUST CAP, 1-15/16"	1
36	131	EXPANSION PLUG, 7/8"	1
37	544	REDUCER BUSHING, Pipe, 1/4" x 1/8"	1



APEX INDUSTRIES
 2217 Snelling Avenue So. — Minneapolis, Mn. 55404 — (612) 729-8388

SAFEGUARD INDUSTRIES, INC.

ALSPORT PART NUMBER 617-102

APEX INDUSTRIES, INC.
 MODEL 800 REVERSING TRANSMISSION
 Repair Parts Price List

<u>ITEM</u>	<u>NEW PART NO.</u>	<u>OLD PART NO.</u>	<u>DESCRIPTION</u>	<u>LIST EACH</u>
2.	50065	112	CASE, Aluminum	\$32.95
3.	10096	527	PLUG, 1/8" Pipe	.25
4.	10087	514	BEARING, Tapered roller, 1" Cup	4.15
	10088	515	BEARING, Tapered roller, 1" Cone (INCLUDED IN ABOVE PRICE)	
5.	10108	130	SEAL, Shifter Shaft	1.10
6.	10076	506	SEAL, Output Shaft	1.70
7.	20073	125	SHAFT, Shifter	3.75
8.	10126	530	ROLL PIN, 1/8" x 1-14"	.25
9.	20034	120	COLLAR, Output Shaft	2.25
10.	10116	532	"E" RING, 3/4" Shaft	.25
11.	10081	534	DUST Cap, 1-3/4"	.90
12.	20064	124	GASKET, Base Plate	1.20
13.	10110	132	SPRING, Detent Ball	.25
14.	10109	128	DETENT BALL, 5/16"	.25
15.	10084	508	EXPANSION PLUG, 3/4"	.25
16.	10073	512	BEARING, Tapered roller, 3/4" Cup	4.15
	10074	513	BEARING, Tapered roller, 3/4" Cone (INCLUDED IN ABOVE PRICE)	
17.	20068	123	KEY, 1/4" x 1/4" x 3-3/4"	2.10
18.	30094	118	SHAFT, Output 1" (Specify Application)	11.75
19.	30095	126	GEAR, 33 Tooth	27.45
20.	10018	542	WASHER, 5/16" Spring Lock	.25
21.	10046	540	CAP SCREW, Hex Head, 5/16" x 3/4"	.25
23.	20065	122	BASE PLATE	2.80
24.	20070	127	GEAR, 17 Tooth, reverse (Incl. 2 no. 10224 brgs.)	18.25
	10224	129	BEARING, Needle, 3/4" x 5/8" (for no. 20070 gear)	2.75
25.	20072	110	GEAR, Drive pinion, 14 Tooth	9.95
26.	20074	108	SHAFT, Idler	4.25
27.	10145	517	KEY, 1/8" x 1/8" x 3"	.70
28.	30093	121	SHAFT, Input, 3/4" (Specify Application)	11.50
29.	10125	529	ROLL, PIN, 1/8" x 1"	.25
30.	20029	119	COLLAR, Input Shaft	1.50
31.	10183	505	SEAL, Input Shaft	1.05
32.	10094	541	NUT, Hex, 5/16"	.25
33.	10121	543	SET SCREW, 5/16" x 3/4"	.25
34.	10115	531	"E" RING, 1" Shaft	.25
35.	10083	535	DUST CAP, 1-15/16"	.80