

# BUGS 'N BIKES

## "BUGS"

- ★ New, heavy-duty torque converter gives plenty of power for the hill climbs and straightaways
- ★ Easy to handle with automotive type differential and dual rear wheel brakes
- ★ New aircraft design tubular frame with tow hitch
- ★ New low profile molded fiberglass body with deep, padded bucket seat
- ★ Easy to transport in station wagon



Double spring front shocks help cushion the bumps, whether with wheel or optional ski.

	Model No. 711-2 5 H.P.	Model No. 721-2 8 H.P.	Model No. 726-2 8 H.P.
Frame Construction	Tubular Steel — Argon Welded		
Body Color	Blue Flake		
Tecumseh Engine (All four cycle, air cooled)	5 H.P. ¾" Shaft	8 H.P. 1" Shaft	8 H.P. Electric Start 1" Shaft
Displacement (Cu. In.) (C.C.)	12 198	18.6 306	
Engine Shut-Off	Handle Button		
Gas Tank	One Gallon		
Primary Drive	Torque Converter to jack shaft		
Final Drive	No. 420 Chain (H.D. #41)		
Sprocket Ratio	8 Drive 45 Driven		
Differential	Automotive-Type Bevel Gears		
Throttle	Foot Pedal		
Brake — Handle levers	Dual Rear Discs — 8¼" dia.		
Clutch	Torque Converter		
Clutch Ratio	1:1 high 3.9:1 low		
Tires: Front Rear	15" (4.00-6) 18" (9.50-8)	16" (6.50-8) 21" (12-8) A.T.V.	
Body	Fiberglass		
Wheels — with precision ground sealed ball bearings	Steel — Silver gray		
Handlebar and Fender	Chrome Plated		
Frame	Semi-gloss Black		
Seat Cushion	2" Bonded w/1" Bonded Back		
Dimensions: Wheel Base Overall length Overall width Height — Handle Bar Body	70" 48" 30½" 25½"	51¼" 71" 48" 31" 26"	
Frame Ground Clearance	6"	6½"	
Curb Weight	188 lbs.	200 lbs.	212 lbs.

## "BIKES"

All these trail bikes are equipped with engine exhaust spark arresting mufflers, qualified under U.S. Department of Agriculture Forest Service Standard 5100-1a, Their use is permissible in National Parks.

These bikes are not manufactured for use on public roads, streets or highways.

- ★ Your choice — Five Models!
- ★ "653-2" & "753-2" Complete with headlights, taillights and alternator
- ★ All models complete with torque converter



Motocross Handlebar (703-2 and 753-2) Extra strength and durability with chrome motocross handlebar. Adjustable and removable.

Front wheel suspension for "600" and "700" series is integral leading link and shock design.

Stable riding comfort assured with "swing arm" rear suspension on "600" and "700" series. Note 3-point kickstand which is standard on all models.

Model No.	523-2	603-2	653-2	703-2	753-2
Frame:	1" Tubular Twin Bar				
Rake/Bearing:	23° Ball	30° Ball	32° Ball		
Finish Color:	Bittersweet	Bittersweet & Beige	Bittersweet & Black		
Engine (All four-cycle)	4 H.P. 10.5 cu. in./ 172.06 cc Shut-off Button	4 H.P. w/Alternator 10.5 cu. in./172.06 cc Deluxe Shut-off Button	4 H.P. w/Alternator 12 cu. in./198 cc Integral Shut-off Button on Handle Bar	5 H.P. w/Alternator 12 cu. in./198 cc Integral Shut-off Button on Handle Bar	
Primary Drive:	Torque Converter to jack shaft**	Asymmetric Torque Converter** to jack shaft			
Speeds	Multiple — Hand Twist Throttle				
Gear Ratio:	12.8:1 Low 4:1 High	19.1:1 Low 6:1 High			
Gas Tank:	3 qt.				
Suspension:	Double External Spring — Front  Double Spring & Shock — Rear	Leading Link & Shocks — Front  Swing Arm & Shocks — Rear			
Handle Bars:	Removable Chrome	Removable & Adjustable — Chrome	Motocross: Removable & Adjustable — Chrome		
Tires:	15" (4.00-6)	16" (3.00-10)	Front: 18½" (3.00-12) Rear: 17" (3.50-10)		
Wheels:	Steel/Ball Brg. Extended hub	Chrome Wheels/Ball Bearing/ 28 Chrome Spokes			
Brake:	Rear Band	Internal front & rear			
Saddle: (All firm, bonded foam)	18" Deluxe w/Chrome Support	17" Deluxe w/Chrome Support			
Lights:	Model 653-2—Headlight & Taillight, Model 753-2 Hi & Lo Beam Headlight & Taillight				
Foot Rests:	All models have fold back design foot rests.				
Kickstand:	Motorcycle Type — 3-Point				
Dimensions: Wheel Base: Overall Width: Overall Height: Overall Length: Ground Clearance:	40" 24" 35" 53" 5"	39" 26" 36" 55" 6"	41" 28" 37" 58" 6½"		
Weights: Curb Wt. (lbs.) Approx. Ship. Wt. (lbs.)	111 123	115 127	118 129	126 137	128 139

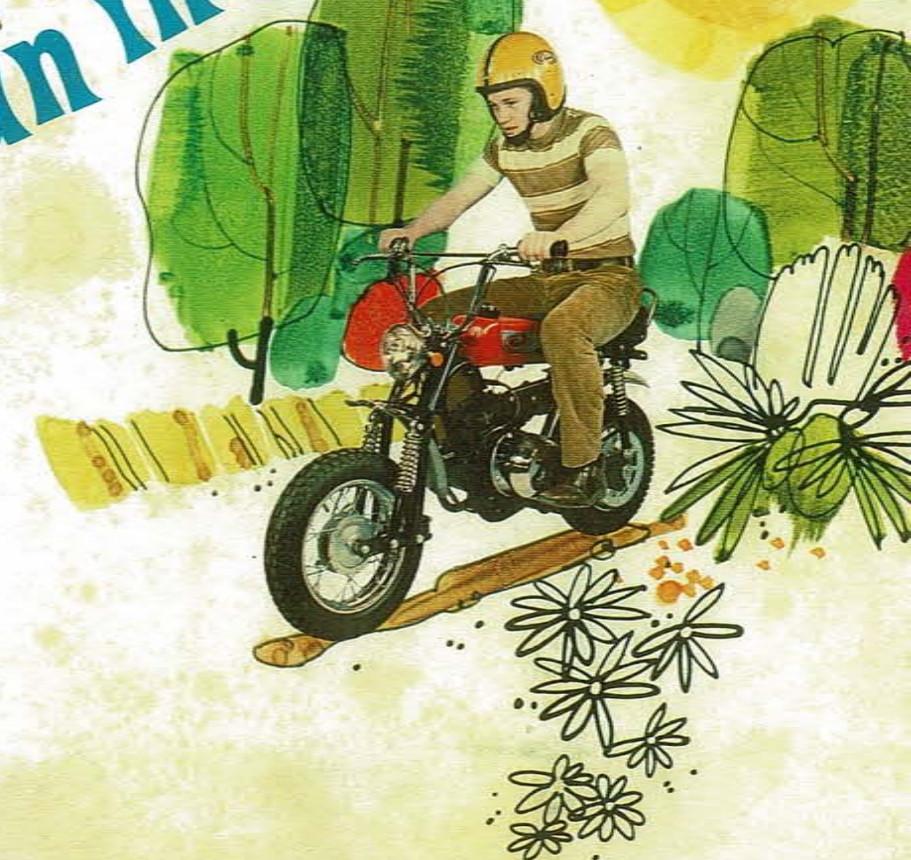
\*\*#41 chain on these models.



# BUGS 'N BIKES



...for fun in action



MTD PRODUCTS INC • 5389 West 130th Street • P.O. Box 2741 • Cleveland, Ohio 44111  
SEHL ENGINEERING LTD., 136 Ottawa Street, South, Kitchener, Ontario, Canada

Specifications subject to change without notice or obligation.



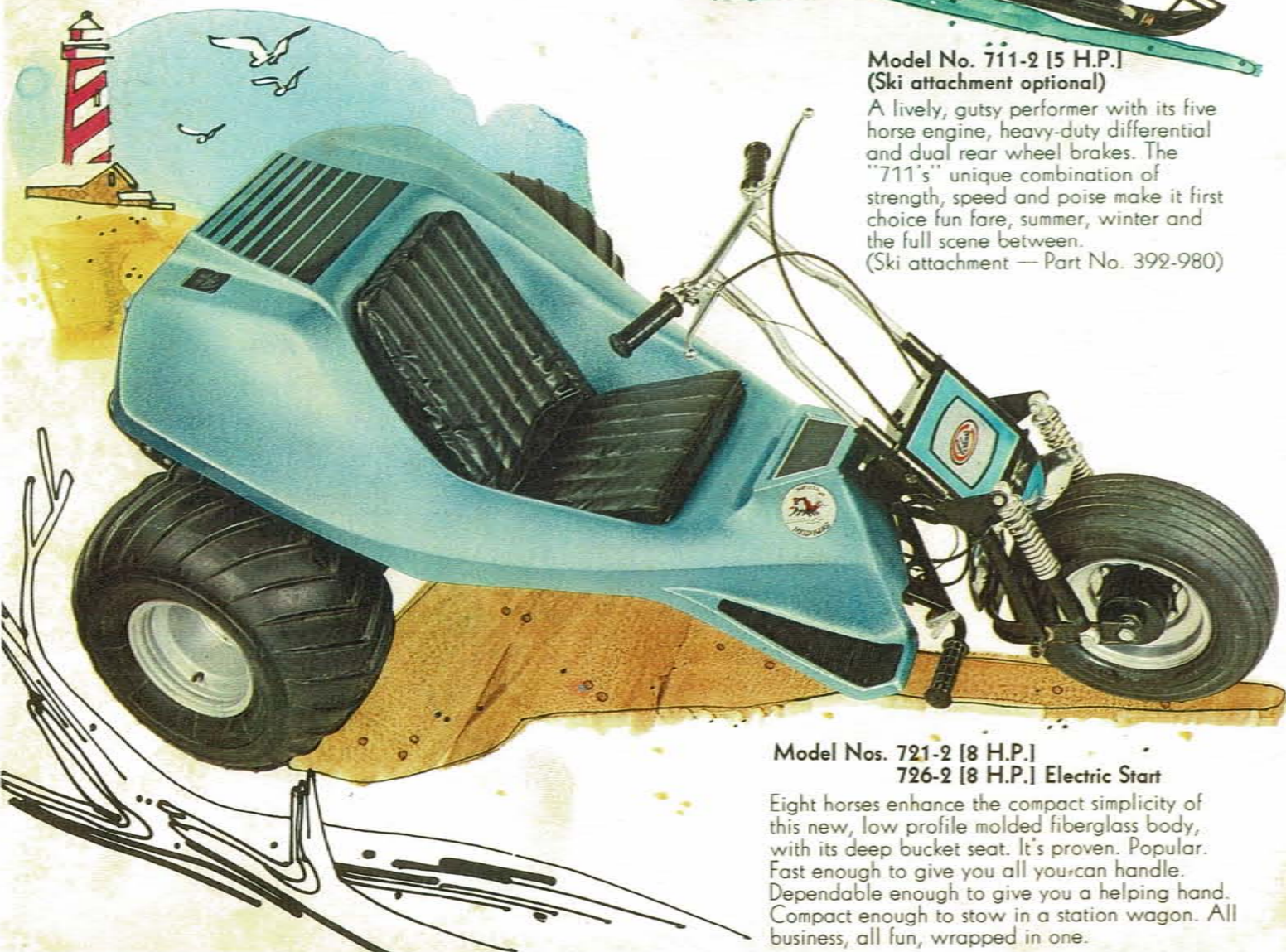
# MUD BUG ...The All-Season Bug!

Speeding or cruising, you'll thrill to a whole new dimension of fun to be found. Here is a rugged, rock steady, ground hugger built to perform equally well in trails, on sand, through snow or just about anywhere you want to go. Flat out, it's real honest-to-goodness excitement that invites you to jump on and take off.



**Model No. 711-2 [5 H.P.]**  
(Ski attachment optional)

A lively, gutsy performer with its five horse engine, heavy-duty differential and dual rear wheel brakes. The "711's" unique combination of strength, speed and poise make it first choice fun fare, summer, winter and the full scene between.  
(Ski attachment — Part No. 392-980)



**Model Nos. 721-2 [8 H.P.]**  
**726-2 [8 H.P.] Electric Start**

Eight horses enhance the compact simplicity of this new, low profile molded fiberglass body, with its deep bucket seat. It's proven. Popular. Fast enough to give you all you can handle. Dependable enough to give you a helping hand. Compact enough to stow in a station wagon. All business, all fun, wrapped in one.



# TRAIL BIKES MINI-CYCLES

Real going bikes — Columbia! Start up these upstarts and you'll see for yourself. Here is an exciting combination of power, performance and versatility. Trail huggers all the way. Columbia is really what bikes are all about!



**Model No. 523-2 [4 H.P.]**  
Complete with Torque Converter

A four horse hotshot that is a do everything trail bike with a lot to offer in performance and economy. Simplicity in design gives the "521" a real feel for the trail. Double spring shocks, front and back, let it take on the cobbiest paths with ease. Grab one and go — confidently.

**Model Nos. 603-2 [4 H.P.]**  
**653-2 [4 H.P.] Alternator & Lights**  
Complete with Torque Converter

A real trail blazin' buddy! Rugged. Ready. Reliable. Handles rough terrain with unquestioned authority. Exclusive leading link suspension cushions shocks more evenly while assymetric torque converter puts power where you need it . . . when you need it. Against others in its class, there's nothing to compare.



**MINI-CYCLE**  
**Model Nos. 703-2 [5 H.P.]**  
**753-2 [5 H.P.] Alternator & Lights**

This is the "Big One" in everything, except size and price. Five horses give it quickness to match its strength. It's the most rugged performer in its class with a 32° fork rake design to give maximum stability and exceptional maneuverability — a tough combination to match.

