

QUESTER

OFF-ROAD 3-WHEELER

by *MANCO*

MODEL NO.

305

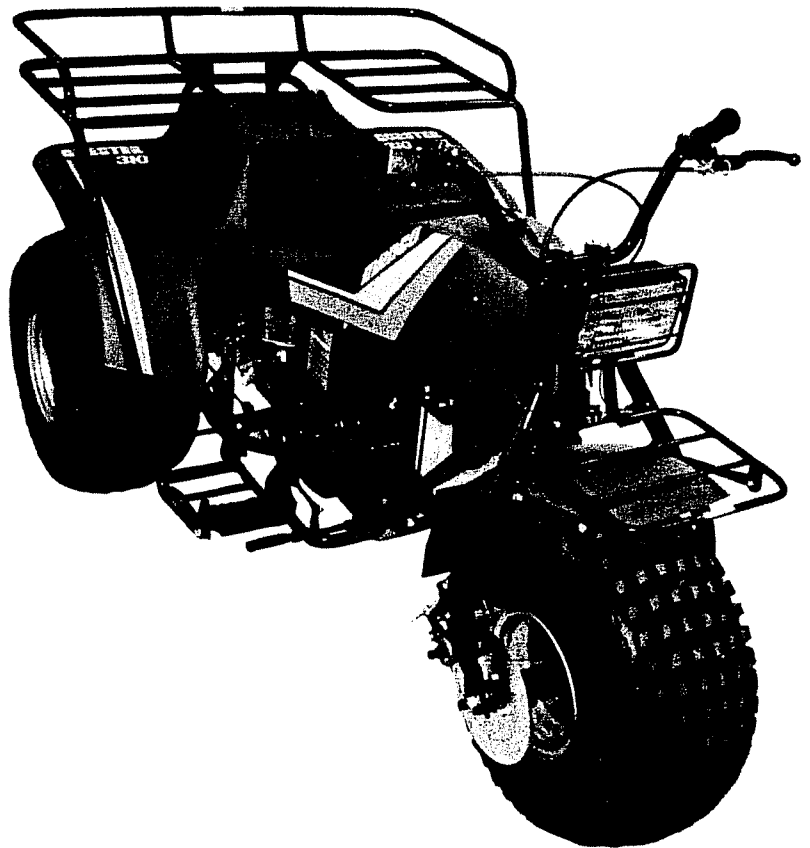
308

310

WARNING:

Read Rules for
Safe Operation
and Instructions
Carefully

- Assembly
- Operating
- Maintenance
- Repair Parts
- Warranty



Shown with optional light kit (Model 308 & 310 only), rear cargo rack w/heelguards and front rack.

owner's manual

REPAIR PARTS

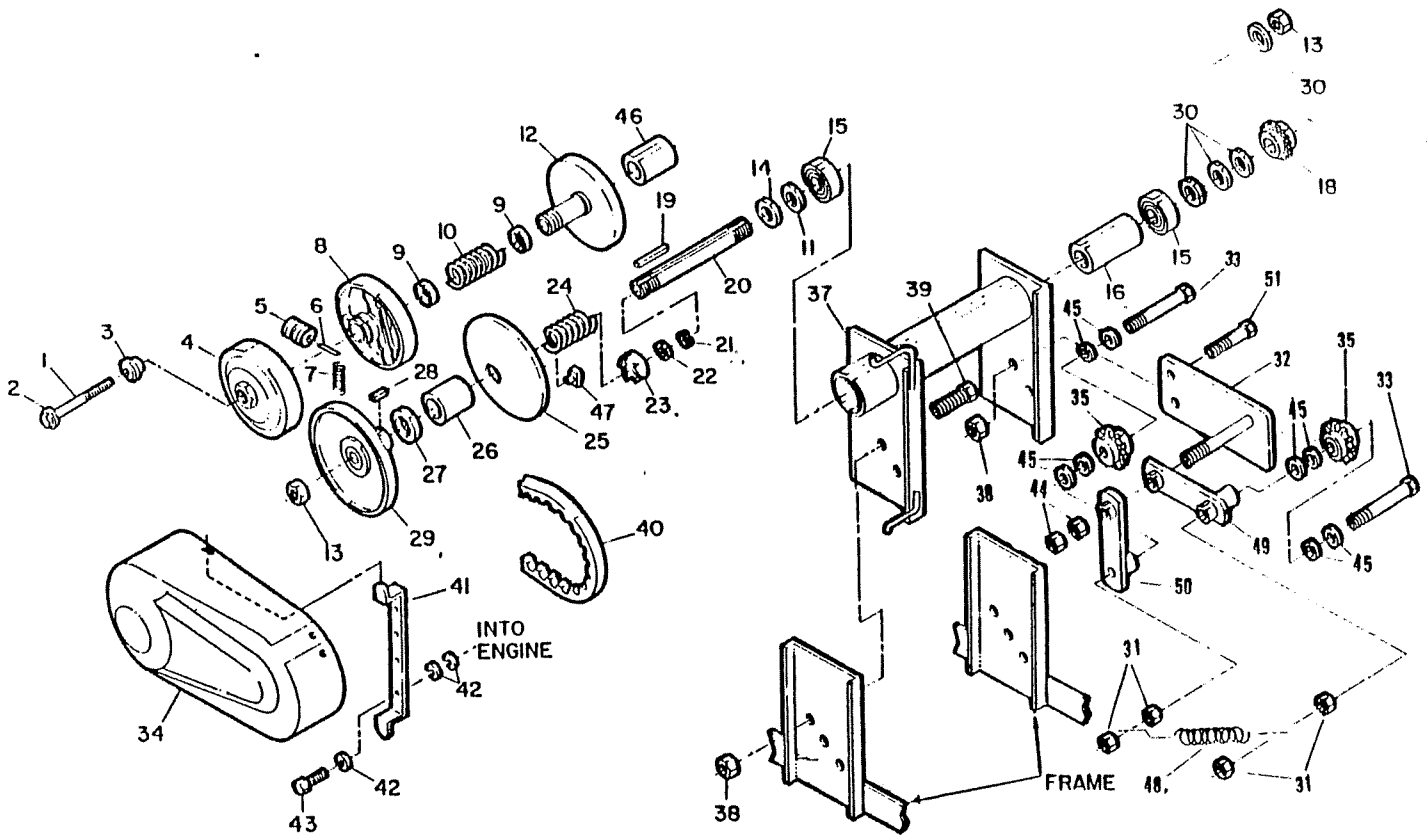
MODEL 308-131/310-131

REF. NO.	PART NO.	DESCRIPTION	REF. NO.	PART NO.	DESCRIPTION
1	3793-2	Frame	46	3871	Fuel Tank Assembly
2	3783	Bearing	47	3880-2	Fuel Tank Cover w/Decals - Black
3	9058	5/16-24 Hex Jam Nut	48	2386	3/8-16 x 3-1/2 GR5
4	3428	7.5 Kawasaki Engine, (Model 308)	49	9102	Internal Lock Washer
4	3429	8.5 Kawasaki Engine, (Model 310)	50	2449	1/4 Tinnerman Nut
5	3827	Cable Retainer (Model 308), 3828 (Model 310)	51	1854	1/4" Flat Washer
6	2666	Swivel Screw (310 ONLY)	52	6046	10-24 x 1/2 Truss Head Screw
7	2748	Cable Stop Nut (310 ONLY)	53	3890	Stop Switch & Wire Harness
8	9110	3/8 Dia x 7/8 Shoulder Bolt	54	3722	Shift Lever
9	1263	5/16-18 Flanged Whiz Nut	55	3811	Front Axle Shaft
10	3714	RH Axle Shaft/3715 LH Axle Shaft	56	1046	5/8-11 Locknut
11	3699	Rear Brake Rotor	57	3912	Footrest
12	3698	Rear Brake Caliper	58	9030	Internal Lock Washer 5/16
13	3692	Gear Box	59	1275	5/16-18 x 3/4 Hex Cap Screw
14	3697	Axle Coupler	60	9060	5/16 Flat Washer
15	3941	Axle Bearing	61	3712	1/4 x 1/4 x 1 Key
16	1760	Bearing Flange	62	3761*	Spacers, 5/8 ID x 1/4
17	1557	Axle Flange Assy.	63	2806-2	Handle Bar
18	5176	Axle Spacers, 3-1/4 Long	64	9127	5/16-18 x 2-1/4 GR5
ASM	2863	Wheel & Tire Assy. 21-12 x 8 ATV, Silver (*Includes Ref. #23 & 24)	65	5895	Handlebar Clamp
	9124	3/8 x 1-3/4 Shoulder Bolt	66	1971	Grip — Brake Lever
20	9091	3/8 Flat Washer	67	2800	Brake Lever Assembly
21	1428	Lug Nut 1/2-20 Hex	68	3797	Front Wheel Flange Assy.
22	9052	Axle Nut — 3/4-16 Hex Locknut	69	5090	Bearings
23	2862	Wheel Rim/Silver	70	3812	Bearing Spanner
24	1452	21 x 12 x 8 Tubeless ATV Tire	71	3861-2	Front Fender - Black
NI	1430	18-9.50 x 8 Inner Tube — Repair Part Only	72	1846	1/4-20 x 3/4 HHCS GR5
25	2264	5/16-18 x 3/4 Hex Head Cap Screw GR5	73	3406	Half Clevis
26	1189	5/16-18 Hex Lock Nut	74	9057	1/4-20 Lock Nut
27	9011	5/16-24 Centerlock Nut	75	3800-2	Front Fork Weldment
28	9085	3/8 Top Locknut	76	2772	5/8-11 x 9.50 Hex Bolt GR5
29	3782	Brake Rotor - Front	77	—	Not Used
30	3759	Front Brake Caliper	78	1835	Fuel Tank Cap
31	9132	Hex Socket Button Head Cap Screw 5/16-18 x 3/4	80	3785	Hand Grip w/Plug
32	3748	Brake Rod	81	3757-2	Travel Trunk Lid Black
33	9116	Cotter Pin 3/32 x 3/4	82	—	Not Used
34	3806	Throttle Cable Assembly (308)	NI	3962/3957	Owner's Manual/Repair Parts List
34	3807	Throttle Cable Assembly (310)	NI	3111	Fuel Filter
35	3808	Cable Assembly — Hand Brake	83	3906	Brake Mounting Bracket
NI	1019	Tyton Straps, Throttle and Brake Cables	84	3918	Ext. Spring
36	3734	Travel Trunk Assy.	85	3919	Comp. Spring
37	1849	1/4-20 x 1-1/2, HHCS, GR5	86	9128	Clevis Pin
38	3879-2	Body ASM w/Decals - Black (308)	88	3904	3/8 ID Bushing 5/8 Long
38	3900-2	Body ASM w/Decals - Black (310)	89	3823	Grip-Shift Lever
39	2822	Hinge	90	1847	1/4-20 x 1 HHCS GR65
40	3856	Low Tension Pop Rivet 3/16 Dia.	NI	9135	1/4-20 x 5/8 BUT HD GR5 (attach body to trunk)
	5891	3/16 Dia. Alum. Washer	NI	2449	1/4 Tinnerman Nut (attach body to trunk)
	3615	Latch	NI	1854	1/4 Flat Washer (attach body to trunk)
43	5135	10/24 Tinnerman Nut			
44	2785	Seat			
45	1185	1/4-20 Twin Whiz Nut			

* — Assembly Complete
 — Illustrated

REPAIR PARTS

MODEL 308-04/310-04 CHAIN DRIVE TORQUE CONVERTER DRIVE BRIGGS & STRATTON ENGINE

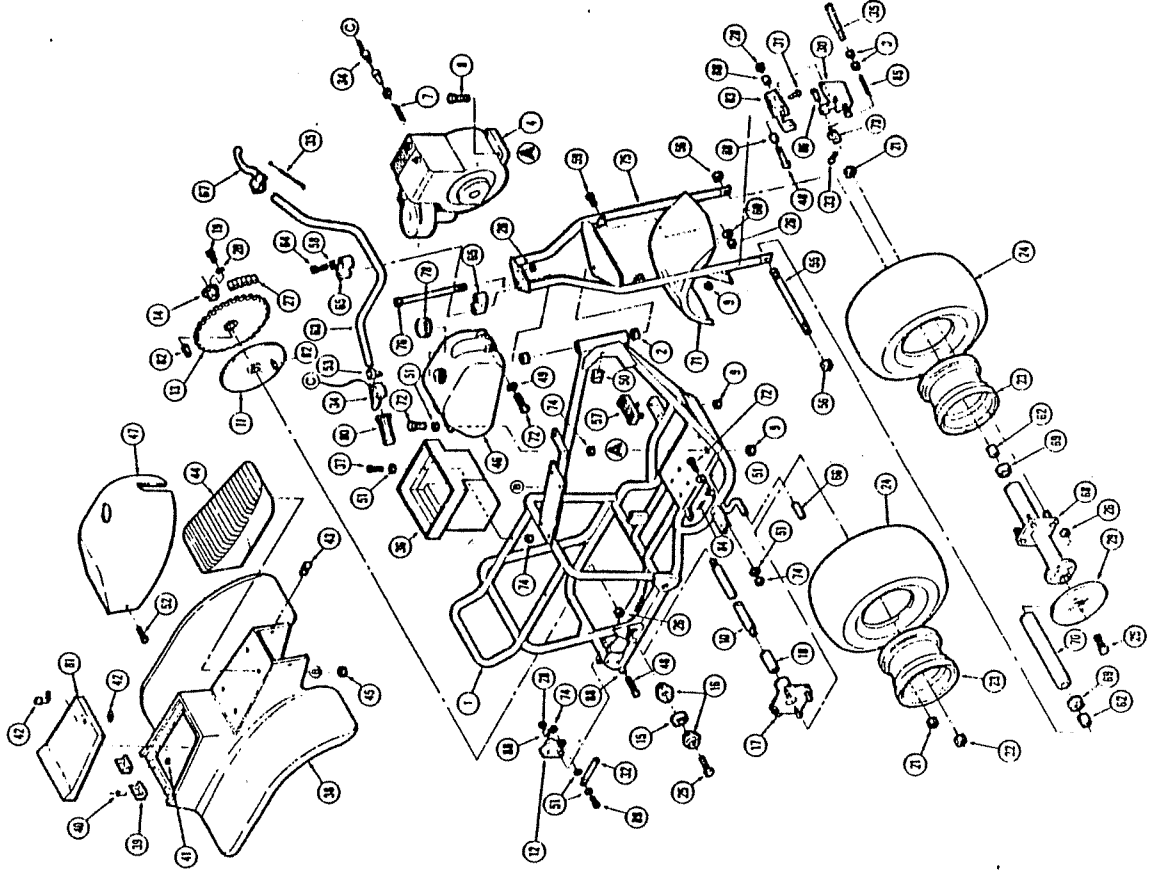


REF. NO.	PART NO.	DESCRIPTION	REF. NO.	PART NO.	DESCRIPTION
1	3606	Bolt, 7/16-20 x 2-3/4 GR5, (Model 310)	25	2481	Moveable Face and Cam
1	2810	Bolt, 7/16-20 x 1-3/4 GR5, (Model 308)	26	2482	Bushing
2	2467	7/16 Lock Washer	27	2483	Spacer
3	2468	Pilot Washer	28	2484	3/16 x 3/16 x 9/16 Key
ASM	2594	Driving Pulley Assy., Includes #4-10 & 12	29	2485	Fixed Face and Post
4	2469	Cover and Drive Plate	30	1469	Washer 5/8 ID x 1/16
5	2470	Cam Roller	31	9085	3/8-16 Top Lock Hex Nut
6	2471	Clip	32	3926	Idler Plate
7	2472	Extension Spring	33	2386	3/8-16 x 3.5 Hex Head Cap Screw GR5
8	2473	Moveable Face and Hub	34	3809	Drive Cover W/O Notch
9	2474	Guide Bushing	35	3604	Sprocket & Bearing Assembly
10	2475	Compression Spring	NI	9022	1/2 ID x 1/16 THK Flat Washer SAE N
11	1937	Spacer, 5/8 ID x 1/4 Long (310 Only)	37	3817-2	Chassis Weldment - Black
12	2595	Fixed Face and Post	38	1189	5/16-18 Lock Nut
13	1136	5/8-18 Hex Locknut	39	2264	5/16-18 x 3/4 HHCS GR5
14	1937	Spacer, 5/8 ID x 1/4 Long	40	3619	Belt
15	5090	Bearing	41	3813-2	Cover Mounting Clip - Black
16	1116	Bearing Spanner	42	1130	3/8 ID Lockwasher
17	—	Not Used	43	4070	3/8-16 x 3/4 Hex Cap Screw
18	1125	Sprocket #420 x 9 Tooth	44	1012	1/2-13 Top Lock Nut
19	3403	Key 3/16 x 3/16 x 2	45	3602	Washer
20	2777	Jackshaft	46	1082	Spacer, 1 ID x 7/16 (310 only)
ASM	2432	Driven Pulley, Includes #21-29 & 47	47	2516	Button, Insert
21	2477	Retaining Ring	48	3927	Extension Spring
22	2478	Thrust Washer	49	3924	R.H. Idler Arm
23	2479	Fixed Cam	50	3925	L.H. Idler Arm
24	2480	Torsion Spring	51	2532	5/16-18 x 1 GR5

File COPY

EXPLODED VIEW MODEL 308-04/310-04

REPAIR PARTS
MODEL 308-04/310-04



REF. NO.	PART NO.	DESCRIPTION	REF. NO.	PART NO.	DESCRIPTION
1	3792-2	Frame	46	3871	Fuel Tank Assembly
2	3783	Thrust Bearing	47	3880-3	Fuel Tank Cover & Decals - Red
3	9058	5/16-24 Hex Jam Nut	48	2386	5/8-16 x 3-1/2 HHCS GR5
4	2790	8 H.P. Briggs & Stratton Engine, (Model 308)	49	9102	1/4" Internal Lock Washer
5	3600	10 H.P. Briggs & Stratton Engine, (Model 310)	50	2449	1/4" Tinnerman Nut
6		Not Used	51	1854	1/4" Flat Washer
7	2793	Throttle Return Spring	52	6046	10-24 x 1/2 Truss Head Screw
8	2382	5/16-18 x 2 Hex Head Cap Screw, GR5	53	3745	Stop Switch & Wire Harness
9	1263	5/16-18 Flanged Whiz Nut	NI		
10	2737	Axle Shaft	55	3811	Front Axle Shaft
11	3699	Brake, Rotor, Rear	56	1046	5/8-11 Locknut
12	3698	Rear Caliper	57	2789	Footrest
13	2528	Sprocket Weldment	58	9030	Internal Lock Washer 5/16
14	2531	Hub Bushing	59	1275	5/16-18 x 3/4 Hex Cap Screw
15	3941	Axle Bearing	60	9060	5/16 Flat Washer
16	1760	Bearing Flange	62	3761	Spacers, 5/8 ID x 1/4 Long
17	1557	Axle Flange Assy.	63	3784-2	Handle Bar
18	5176	Axle Spacers, 3-1/4 Long	64	9127	5/16-18 x 2-1/4 HHCS GR5
ASM	2863	Wheel & Tire Assy, 21-12 x 8 ATV, Silver (*includes Ref. #23 & 24)	65	5895	Handlebar Clamo
19	9122	Hex Head Screw, GR5 5/16-18 x 1-1/4"	66	1971	Grip - Brake Lever
20	1124	Lockwasher, 5/16	67	2800	Brake Lever Assembly
21	1428	Lug Nut - 1/2-20 Hex	68	3814	Front Wheel Flange Assy.
22	9052	Axle Nut - 3/4-16 Hex Locknut	69	5090	Bearings
23	2862	Wheel Rim/Silver	70	3812	Bearing Spawner
24	1452	21 x 12 x 8 Tubeless ATV Tire	71	3861-3	Front Fender - Red
NI	1430	18-9.50 x 8 Inner Tube - Repair Part Only	72	1846	1/4-20 x 3/4 HHCS GR5
25	2264	5/16-18 x 3/4 Hex Head Cap Screw GR5	73	3406	Half Clevis
26	1189	5/16-18 Hex Lock Nut	74	9057	1/4-20 Lock Nut
27	3818	Chain - #40 x 80 Pitches - 0"-Ring	75	3900-2	Front Fork Weldment
28	9085	3/8 Top Locknut	76	2772	5/8 x 9.50 Hex Bolt GR5
29	3782	Brake Rotor - Front	77		Not Used
30	3759	Front Caliper	78	1835	Fuel Tank Cap
31	9132	Hex Socket Button Head Cap Screw 5/16-18 x 3/4	80	3785	Hand Grip W/Plug
32	3748	Brake Rod	81	3757-3	Travel Trunk Lid Red
33	9116	Cutter Pin 3/32 x 3/4	82	6123	1/4 x 1/4 x 1-3/4" Key
34	3805	Throttle Cable Assembly	NI	3962/3949	Owner's Manual/Repair Parts List
35	3808	Cable Assembly - Hand Brake	NI	2942	48" Wire & Connector Assy. (Model 308) (See Engine Manual)
NI	1019	Tyfon Straps, Throttle and Brake Cables	NI	3641	Wire Harness, Two Wire and Connector (Model 310) (See Engine Manual)
36	3734	Travel Trunk Assy.	NI	3639-2	Choke Rod (310 Only)
37	1849	1/4-20 x 1-1/2 HHCS GR5	NI	1333	10-32 x 3/8 Hex Machine Screw (310 Only)
38 ASM	3879-3	Body ASM w/Decals Rec 308	83	3906	#14 Flat Washer (310 Only)
39	3900-3	Body ASM w/Decals Red 310	84	3918	Brake Mounting Bracket
40	3656	Hinge	85	3919	Comp. Spring
41	5891	Low Tension Pop Rivet 3/16 Dia.	86	9128	Clevis Pin
42	3615	Latch	88	3904	3/8 ID Bushing 5/8 Long
43	5135	Tinnerman Nut	89	1847	1/4-20 x 1 HHCS GR5
44	2785	Seat	NI	3111	Fuel Filter
45	1186	1/4-20 Turn Whiz Nut	NI	1854	1/4 Flat Washer (ASM Body to Trunk)
			NI	2449	1/4-20 Tinnerman Nut (ASM Body to Trunk)
			NI	9135	1/4-20 x 5/8 Hex Socket HD. Cap Screw (ASM Body to Trunk)
			NI	5407-2	Engine Brace-Black (310 Only)

ASH - Assembly Complete
NI - Not Illustrated

REPAIR PARTS

MODEL 308-14/310-14

REF. NO.	PART NO.	DESCRIPTION	REF. NO.	PART NO.	DESCRIPTION
1	3793-2	Frame	49	9102	1/4 Internal Lock Washer
2	3783	Thrust Bearing	50	2449	1/4 Tinnerman Nut
3	9058	5/16-24 Hex Jam Nut	51	1854	1/4" Flat Washer
4	2790	8 H.P. Briggs & Stratton Engine, (Model 308)	52	6046	10-24 x 1/2 Truss Head Screw
4	3600	10 H.P. Briggs & Stratton Engine, (Model 310)	53	3745	Stop Switch & Wire Harness
5	—	Not Used	54	3722	Shift Lever
6	—	Not Used	55	3811	Front Axle Shaft
7	2793	Throttle Return Spring	56	1046	5/8-11 Locknut
8	2382	5/16-18 x 2 Hex Head Cap Screw, GR5	57	2789	Footrest
9	1263	5/16-18 Flanged Whiz Nut	58	9030	5/16 Internal Lock Washer
10	3714	RH Axle Shaft/3715 LH Axle Shaft	59	1275	5/16-18 x 3/4 Hex Cap Screw
11	3699	Rear Brake Rotor	60	9060	5/16 Flat Washer
12	3698	Rear Brake Caliper	61	3712	1/4 x 1/4 x 1 Key
13	3692	Gear Box W/O Differential	62	3761	Spacers, 5/8 ID x 1/4
14	3697	Axle Coupler	63	3784-2	Handle Bar
15	3941	Axle Bearing	64	9127	5/16-18 x 2-1/4 GR5
16	1760	Bearing Flange	65	5895	Handlebar Clamp
17	1557	Axle Flange Assy.	66	1971	Grip — Brake Lever
18	5176	Axle Spacers, 3-1/4 Long	67	2800	Brake Lever Assembly
ASM	2863	Wheel & Tire Assy. 21-12 x 8 ATV, Silver (*Includes Ref. #23 & 24)	68	3797	Front Wheel Flange Assy.
19	9124	3/8 x 1-3/4 Shoulder Bolt	69	5090	Bearings
20	9091	3/8 Flat Washer	70	3812	Bearing Spanner
21	1428	Lug Nut 1/2-20 Hex	71	3861-3	Front Fender - Red
22	9052	Axle Nut — 3/4-16 Hex Locknut	72	1846	1/4-20 x 3/4 HHCS GR5
23	2862	Wheel Rim/Silver	73	3406	Half Clevis
24	1452	21 x 12 x 8 Tubeless ATV Tire	74	9057	1/4-20 Lock Nut
NI	1430	18-9.50 x 8 Inner Tube — Repair Part Only	75	3800-2	Front Fork Weldment
25	2264	5/16-18 x 3/4 Hex Head Cap Screw GR5	76	2772	5/8-11 x 9.50 Hex Bolt GR5
26	1189	5/16-18 Hex Lock Nut	NI	3407-2	Engine Brace (310 Only)
27	9011	5/16-24 Center Locknut	78	1835	Fuel Tank Cap
28	9085	3/8 Top Locknut	80	3785	Hand Grip
29	3782	Brake Rotor - Front	81	3757-3	Travel Trunk Lid - Red 3855-2/3
30	3759	Front Caliper	82	—	Not Used
31	9132	Hex Socket Button Head Cap Screw 5/16-18 x 3/4	NI	3962/3955	Owner's Manual/Repair Parts List
32	3748	Brake Rod	NI	2942	48" Wire & Connector Assy. (Model 308) (See Engine Manual)
33	9116	Cotter Pin 3/32 x 3/4	NI	3641	Wire Harness, Two Wire and Connector (Model 310) (See Engine Manual)
34	3805	Throttle Cable Assembly	NI	3639-2	Choke Rod (310 Only)
35	3808	Cable Assembly — Hand Brake	NI	3642	10-32 x 3/8 Hex Machine Screw (310 Only)
NI	1019	Tyton Straps, Throttle and Brake Cables	NI	1333	#14 Flat Washer (310 Only)
36	3734	Travel Trunk Assy.	83	3906	Brake Mounting Bracket
37	1849	1/4-20 x 1-1/2, HHCS, GR5	84	3918	Ext. Spring
38	3879-3	Body ASM w/Decals Red 308	85	3919	Comp. Spring
38	3900-3	Body ASM w/Decals Red 310	86	9128	Clevis Pin 1/4 Dia x 1/2
39	2822	Hinge	88	3904	3/8 ID Bushing 5/8 Long
40	3856	Low Tension Pop Rivet 3/16 Dia.	89	3233/23	Grip-Shift Lever
41	5891	3/16 Dia. Alum. Washer	90	1847	1/4-20 x 1 HHCS GR5
42	3615	Latch	NI	3111	Fuel Filter
43	5135	Tinnerman Nut	NI	9135	1/4-20 x 5/8 BUT HD Sock GR5 (attach body to trunk)
44	2785	Seat	NI	2449	1/4 Tinnerman Nut (attach body to trunk)
45	1186	1/4-20 Twin Whiz Nut	NI	1854	1/4 Flat Washer (attach body to trunk)
46	3871	Fuel Tank Assembly			
47	3880-3	Fuel Tank Cover & Decals - Red			
48	2386	3/8-16 x 3-1/2 HHCS GR5			

ASM — Assembly Complete
NI — Not Illustrated