

437025002

# VDO E-Tacho 140

Elektronischer Tachometer (Ø 140mm)

# VDO E-Speedo 140

Electronic Speedometer (Dia. 140mm)

# SIEMENS VDO

A U T O M O T I V E

## MONTAGEANLEITUNG

## INSTALLATION INSTRUCTIONS

999-165-027

0800 A	1001 C	
0801 B		1-6 1

### Safety Instructions



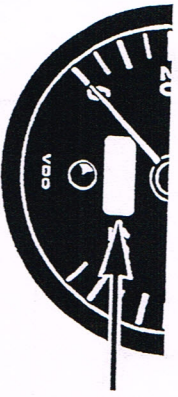
The product was developed, manufactured and inspected in compliance with the basic safety requirements of the EC Directives and in accordance with the generally recognised present level of technology. The product must only be used for service in vehicles restricted to the ground (with the exception of motorcycles) or in stationary systems.



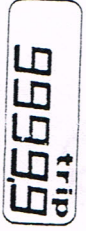
duct and its components:

- do not affect or hinder any functions of the vehicle or system.
- are not damaged by any functions of the vehicle or system.
- do not obstruct the driver's view.
- are not positioned in locations where the driver and front-seat passenger can strike their heads in case of an accident.
- are not positioned in the mechanical and electrical airbag area.
- have sufficient clearance behind the drilled holes or installation opening.
- Do not make drilled holes or installation openings in supporting or stabilising braces or struts!

The kilometers or miles travelled are indicated up to a maximum of 9999.9. The trip distance is set to 0 by pressing down the button longer than 2.5 seconds.



max.

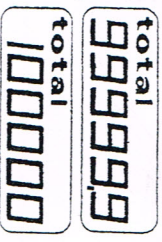
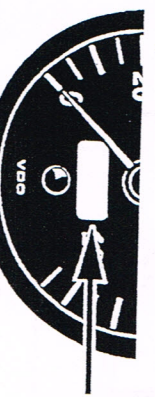
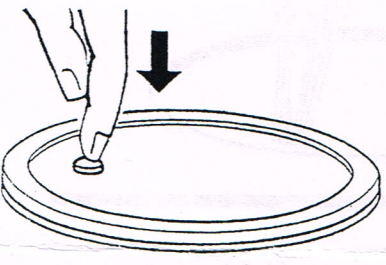


You may select the function (total or trip) desired by pressing the button briefly.

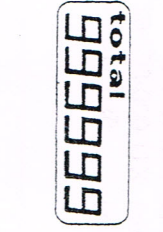
### Gesamtsstrecke / Total distance (total)

Die Gesamtschrecke zählt die zurückgelegten Kilometer oder Meilen bis max. 999999 auf diese Anzeige ist nicht rückstellbar.

The total distance function counts the kilometers or miles travelled up to a maximum of 99999. This display cannot be reset.



max.



### Prior to installation of the product, please observe the following instructions:

- For proper installation of the product, basic knowledge of motor vehicle electrical and mechanical equipment is required in order to prevent damage.
- Write down all the data of volatile electronic memories.
- Remove the ignition key from the ignition lock. Then disconnect the minus pole of the battery (including the minus pole of any auxiliary batteries).
- When the minus pole of the batteries are disconnected, all volatile electronic memories lose their input values.
- Failure to disconnect the minus pole of the battery can cause short-circuits in the vehicle electrical system and then result in cable fires, battery explosions and damage to other electronic systems.
- Prior to installation of the product, refer to the motor vehicle registration documents for information on the vehicle type and any special equipment features and refer to the design plans for further information on the positions of fuel, hydraulic, compressed-air and electrical lines.

### Following installation of the product, please observe the following instructions:

- Connect the ground cable firmly to the minus pole of the battery.
- Enter / program the values of the volatile memories again.
- Check all (!) vehicle functions.
- When measuring the voltages and currents in the vehicle, only use multimeters or diode testing lamps that are designed to be used for such measurements. The use of conventional testing lamps can cause damage to the control units or other electronic systems.

### Special cases:

Please be extremely careful whenever you must perform any required work on the running motor. Wear suitable working clothes only, since risk of suffering injuries such as bruises or burns exists. If your hair is long, wear a hairnet.

### During installation of the product, please observe the following instructions:

- Observe the safety instructions of the manufacturers of the vehicle, system, motor and tools in each instance!
- Select the installation location so that the pro-

Use the product as intended. Do not change or modify.  
Improper use, alteration or modification of the product can result in injuries, property damage or environmental damage or have an effect on safety.

# VDO E-Tacho 140

Elektronischer Tachometer (Ø 140mm)

# VDO E-Speedo 140

Electronic Speedometer (Dia. 140mm)

# SIEMENS VDO

A u t o m o t i v e

## MONTAGEANLEITUNG

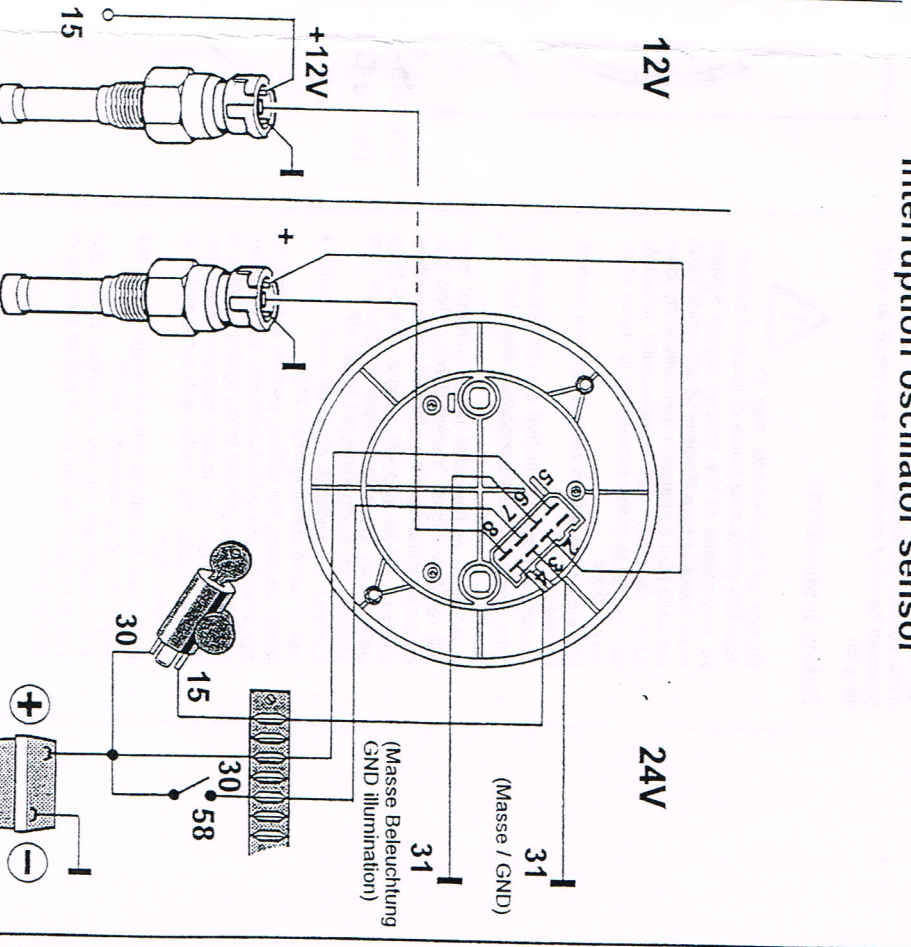
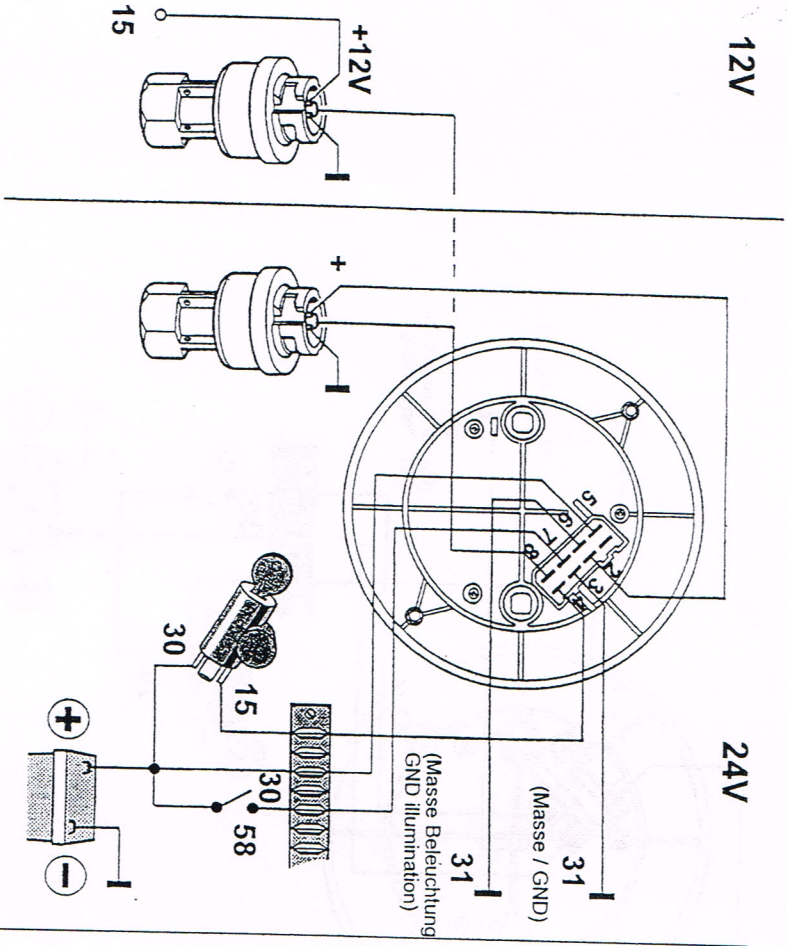
## INSTALLATION INSTRUCTIONS

999-165-027

0800 A	1001 C	
0801 B		
	1-6	4

oder / or Abreißoszillatorgeber

Interruption oscillator sensor



Hallgeber  
Hall-effect sensor

# VDO E-Tacho 140

Elektronischer Tachometer (Ø 140mm) Electronic Speedometer (Dia. 140mm)

# VDO E-Speedo 140

Electronic Speedometer (Dia. 140mm)

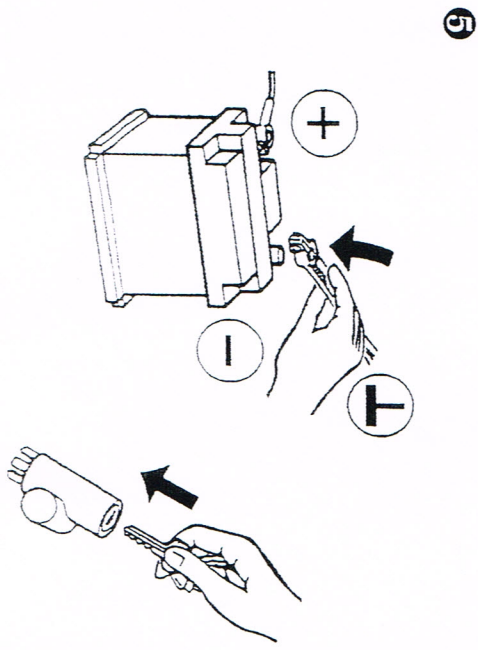
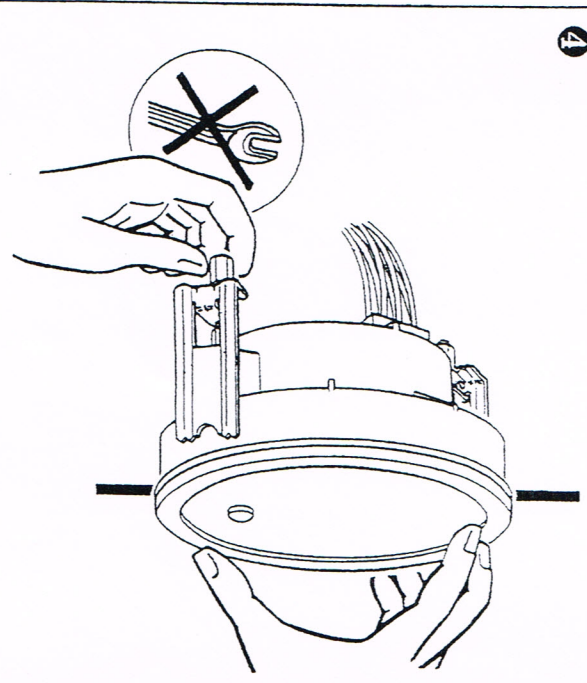
# SIEMENS VDO

## MONTAGEANLEITUNG INSTALLATION INST

**Note:** Respect the tolerances per directive 75/443/EEC when calibrating the speed indication. In Germany a reference to them is made in § 57 StVZO, chapter 4, requirements, states:

- 4.3.5 The vehicle is tested at the following speeds: 40 km/h, 80 km/h and 120 km/h or 80 % of the maximum speed specified by the manufacturer if it is lower than 150 km/h.
- 4.3.6 The error limit of the instrument used for the measurement of the effective vehicle speed shall not exceed  $\pm 1\%$ .
- 4.3.6.1 If a measuring track is used, it shall be level and dry, and have a sufficiently non-skid surface.
- 4.4 The displayed speed shall never be lower than the effective speed. At the speed specified under 4. and at the intermediate values the difference of speed V1 displayed by the speedometer and effective speed V2 shall have the following equation:

$$0 \leq V1 - V2 \leq 10 \sqrt{\frac{V2}{10}} + 4 \text{ km/h.}$$

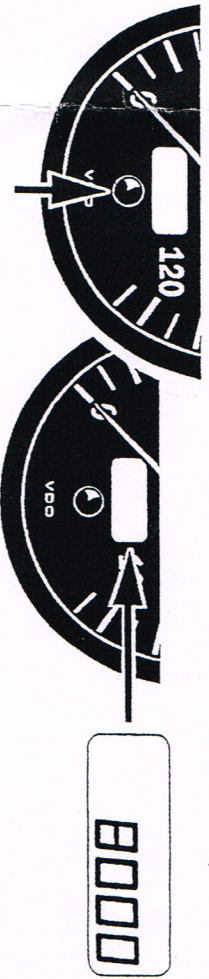


### Setting of the vehicle-specific impulse ratio

The vehicle-specific impulse ratio can only be adjusted, if 30 and 15 are switched off and then switched on again.

- 1) Plug has to be pulled off from the instrument
- 2) Keep the button at the front pressed
- 3) Switch on ignition and plug in again connecting plug

After approx. 3 seconds e.g. the indication 8000 appears. The vehicle-specific impulse ratio can now be set (range adjustable from 1000 to 60000). By briefly pressing the button, the ratio changes by 10 impulses per km or mile, by keeping the button pressed it changes by 100 impulses per km or mile. The set ratio is being stored instantly. To return to normal mode, ignition has to be switched off and on again.



M C	5
1-0	