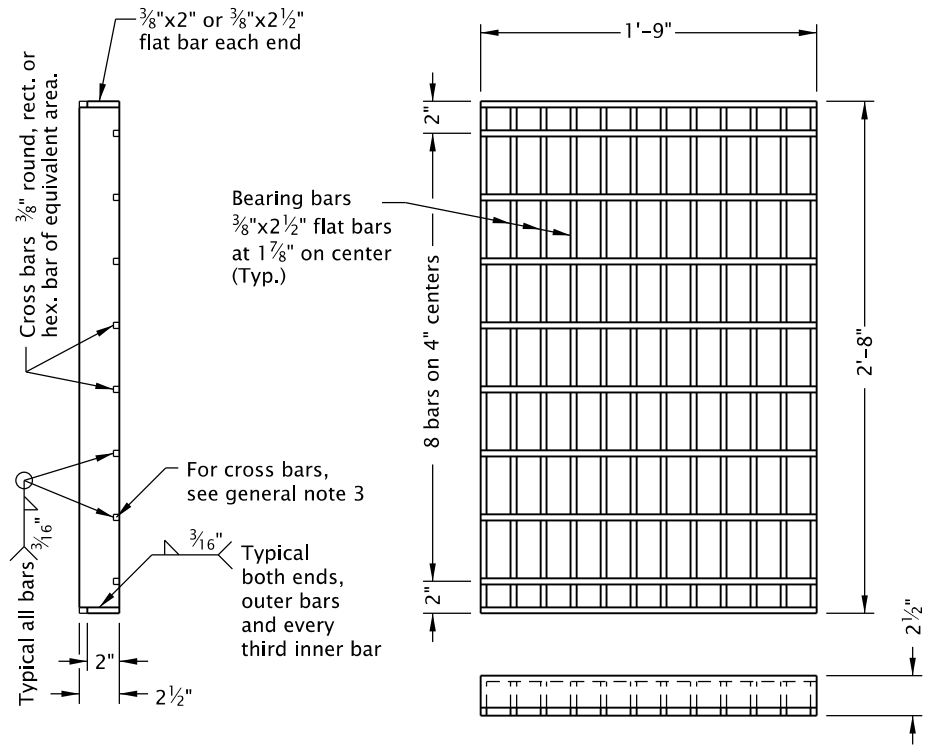
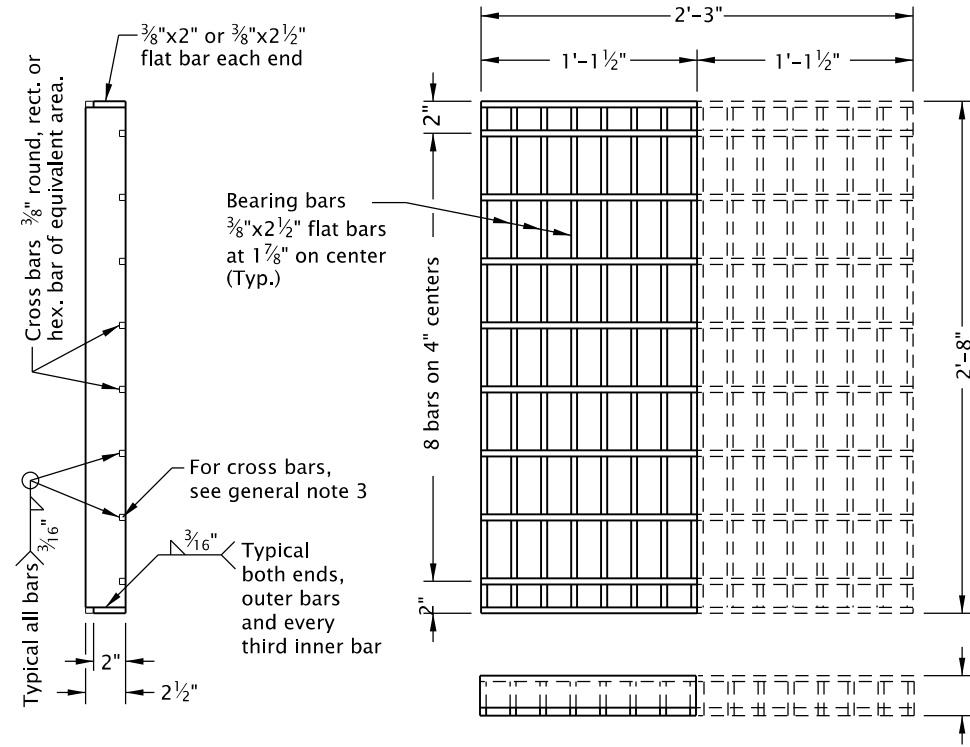


20-JUL-2020

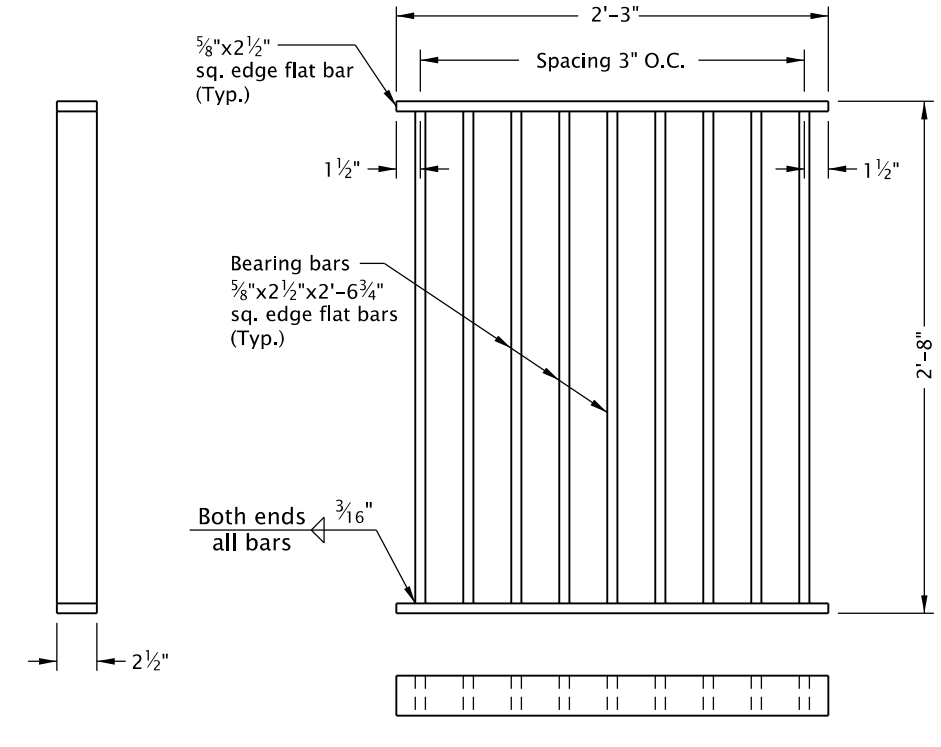
RD365.dgn



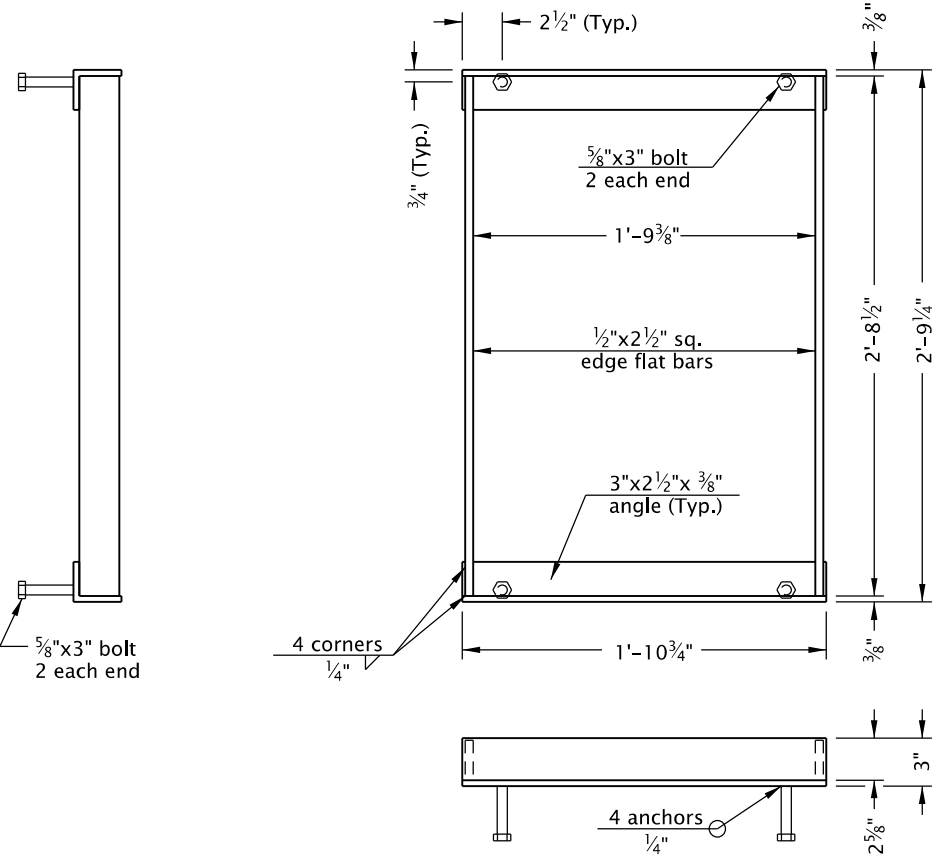
**G-1, CG-1 GRATE
(TYPE 2)**
(Bicycle-safe)



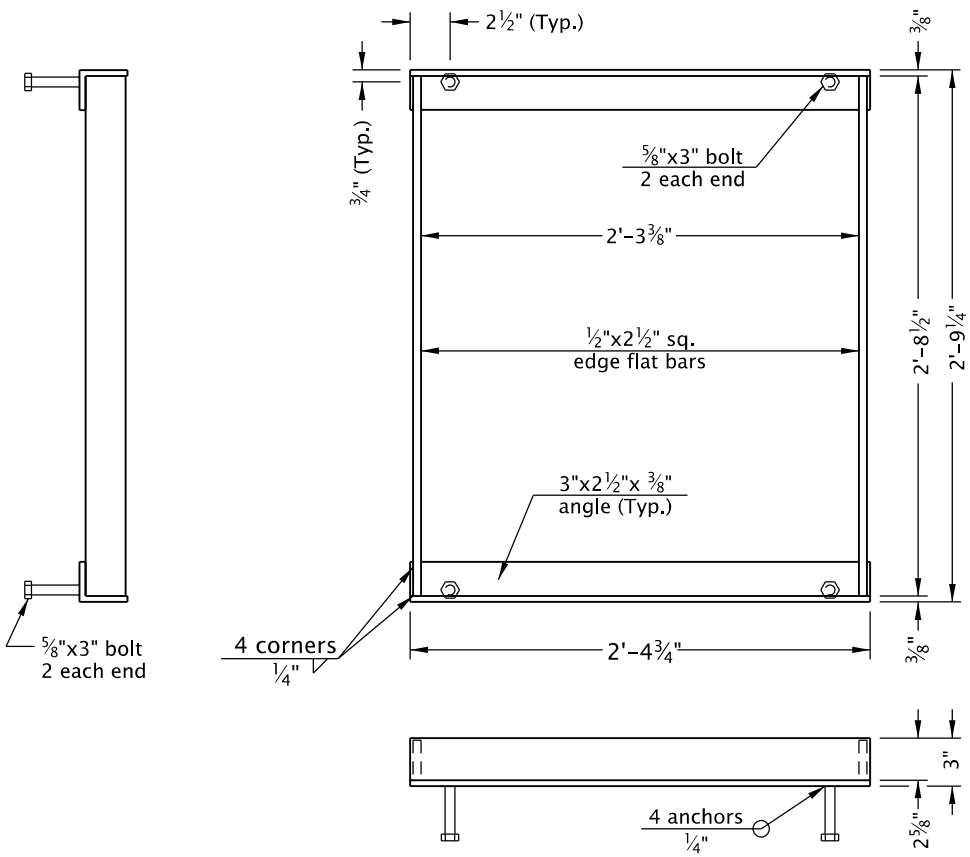
**G-2, G-2M, G-2MA, CG-2 GRATE
(TYPE 2)**
(Bicycle-safe)
(2 grates required per inlet, as shown)



**G-2, G-2M, G-2MA, CG-2 GRATE
(TYPE 1)**
(See general note 2)



G-1, CG-1 FRAME



G-2, G-2M, G-2MA, CG-2 FRAME

GENERAL NOTES FOR ALL DETAILS ON THIS SHEET:

1. For inlet details, see appropriate inlet standard drawing(s).
2. Type 1 grate allowed only in locations not subject to bicycle or pedestrian use.
3. 3/8" cross bars shall be flush with the top of grate surface and may be fillet welded, resistance welded or electroforged to bearing bars.
4. Hot dip galvanize after fabrication.
5. Cast iron grate and frame are acceptable alternates. See ODOT's QPL.

The selection and use of this Standard Drawing, while designed in accordance with generally accepted engineering principles and practices, is the sole responsibility of the user and should not be used without first consulting a Registered Professional Engineer.

All materials shall be in accordance with the current Oregon Standard Specifications.			
OREGON STANDARD DRAWINGS			
FRAMES & GRATES FOR CONCRETE INLETS			
2021			
DATE	REVISION DESCRIPTION		
CALC. BOOK NO.	N/A	SDR DATE	14-JUL-2014
			RD365