

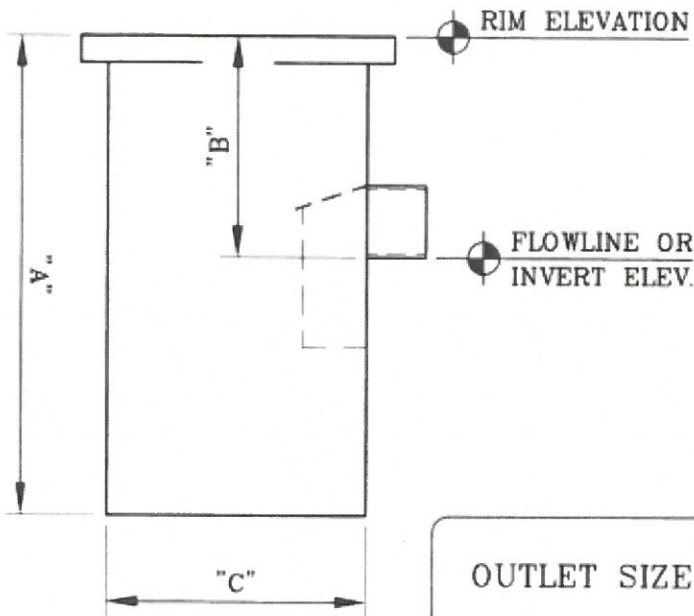


# Gibson Steel Basins, Inc.

1040 Arrowsmith St. Eugene, Or. 97402 ph:(541) 484 - 7200 fax:344-0207

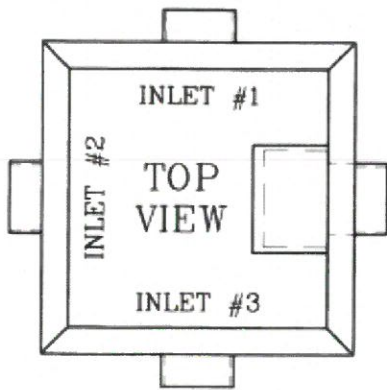
Gibson Steel Basins  
SINCE 1956

## CATCH BASIN ORDER FORM



YOUR JOB NO. : \_\_\_\_\_  
 SQUARE (Y/N) : \_\_\_\_\_  
 ROUND (Y/N) : \_\_\_\_\_  
 DIMENSION "A" : \_\_\_\_\_  
 DIMENSION "B" : \_\_\_\_\_  
 DIMENSION "C" : \_\_\_\_\_

OUTLET SIZE \_\_\_\_\_  
 RIM EL. \_\_\_\_\_  
 OUTLET EL. \_\_\_\_\_



**RIM TO INVERT**

INLET #1 SIZE \_\_\_\_\_ INLET #1 EL. \_\_\_\_\_  
 INLET #2 SIZE \_\_\_\_\_ INLET #2 EL. \_\_\_\_\_  
 INLET #3 SIZE \_\_\_\_\_ INLET #3 EL. \_\_\_\_\_

10 GAUGE (Y/N) \_\_\_\_\_ 1/4" PLATE (Y/N) \_\_\_\_\_  
 HINGED BAFFLE (Y/N) \_\_\_\_\_ SOLID BAFFLE (Y/N) \_\_\_\_\_  
 THREADED CLEAN OUT (Y/N) \_\_\_\_\_  
 OTHER / SPECIAL INSTRUCTIONS \_\_\_\_\_

Sales@GibsonSteelBasins.com