



The Dead Stick Flyer

Newsletter of Swan Harbor RC

Volume 30, Number 8, August 2019

www.swanharborrc.com



President: Gary Gunter (410) 658-1170

VP: Chris Mounayer (732) 539-8731

Secretary: Ron Lazzeri (443) 425-9006

Treasurer: Steve Snyder (410) 638-2895

Safety Officer: Bob Walker (410) 456-0100

Member at Large: Dale Davis (410) 459-0399

Member at Large: Herman Reichart (410) 935-8979

Member at Large: Stephen Slotnick (908) 403-0273

Member at Large: Jae Jang (443) 910-2439

Swan Harbor RC meeting was held at the field on Saturday, August 10, 2019 at 10am

Inside this Issue:

- **President's Club Meeting & Discussion Topics:**
 - **Old Business:**
 - **Permit for new shed**
 - **New Business:**
 - **New shed coming**
 - **Fall member picnic**
 - **Treasury & membership**
 - **General discussion items**
- **Thursday Night Flying**
- **General Information**
- **Club Photo Gallery**
- **Tech Corner**
- **RC Vendor listing**
- **Yard Sale Bulletin Board**



President's Club Meeting & Discussion Topics

○ **Old Business:**

- **Shed Permit:** *The permit for the new shed has been received so we are cleared to install it as soon as it arrives in late August.*

○ **New Business:**

- **New 2nd Shed:** *The new shed will go alongside our existing shed that we have outgrown. The shed will be 12' x 12' with a 9' roll up door like the older one. It will be dressed out in the same colors. The current shed is very cramped and difficult to walk through the side where the mowers are kept. The extra width and depth of the new shed will alleviate the difficulty of getting around the mowers to get to the front roll up door. Delivery of the shed should be in late August.*
- **Fall Member Picnic:** *Our annual fall member picnic is next month on Saturday, September 14, 2019 from 10am till 4pm. We will have some good eats with gourmet hamburgers, sausages, dogs, and of course all the salads and fixings to go along with the main course. Hopefully, it will be good weather but as usual the picnic will be held rain or shine. Depending on member participation and plane availability, we will have some fun RC flying games you will be sure to enjoy. We could have an RC Demo Derby, or RC Bowling, or a Spot Landing Contest. Stay tuned as this gets firmed up.*
- **Treasury & Membership:** *Steve Snyder provided the current financial report and advised we are now up to 75 members as of meeting time. We also welcome our 1st lady member and flyer to the roster. Her name is Carol Seldomridge and is the wife of Dan Seldomridge. Welcome to the club, Carol, and many happy RC flights! I see some flying competition brewing.....*
- **General Discussion:**
 - **Trash Cans:** *Dale has provided trash cans under each canopy for your convenience and to help keep the grounds clean. Dale takes the trash out several times a week so the cans are always available. Gary commented that it really bothers him to see some people just get up and leave bottles and cans behind on the tables for someone else to clean up. Please.....be courteous, clean up behind yourselves, and police the area to keep the grounds clean!*

- **Field Maintenance:** *A special thanks to our dedicated grounds crew. The field is looking great as always, because our grounds crew does a wonderful job keeping it that way.*
- **Newsletter:** *I would also like to give a special thanks to Ron Lazzeri for putting out such great newsletters. They are done so professionally.*
- **Event Flyers:** *Another special thanks to Marvin Tedrow for doing our special event flyers. They always look great. Thanks Marvin.*
- **Treasury & Membership:** *And another special thanks to Steve Snyder for maintaining our financial records and checkbook. He keeps things in balance. Thanks Steve.*
- **Website & Facebook:** *And finally, a special thanks to Stephen Slotnick and Chris Mounayer for keeping the club website and Facebook looking and operating very professionally. Thanks guys.*
- **Locking the Shed & Entrance Gate:** *We've had several occurrences in recent months where the shed and the entrance gate were left unlocked at the end of the day. **PLEASE LOCK THESE TWO AREAS WHEN YOU ARE THE LAST PERSON(S) OUT FOR THE DAY.** Leaving these areas unlocked makes our site an easy target for theft and vandalism. We all have worked too hard to have our site ruined because we were negligent in locking up at the end of the day. Please pass the word amongst yourselves when you know you are the last of the members leaving the field. Thanks Very Much!*

Thursday Night Flying:

The longest days of summer are slowly drifting away. Bob Walker says we still have some good evening flying left so bring a plane or two out and enjoy the benefits that summer time evenings with no wind have to offer. Let's keep the summer fun alive!

It doesn't get any better than this!

Swan Harbor RC Club

Fall Club Picnic

Picnic flyer created by Marvin Tedrow

Our member picnic is next month! Come out and have some fun!



Swan Harbor RC Club

Invites you to the

Fall Club Picnic

NO Rain Date

Sept 14 – 10am



“Picnic Food and Drinks Available “

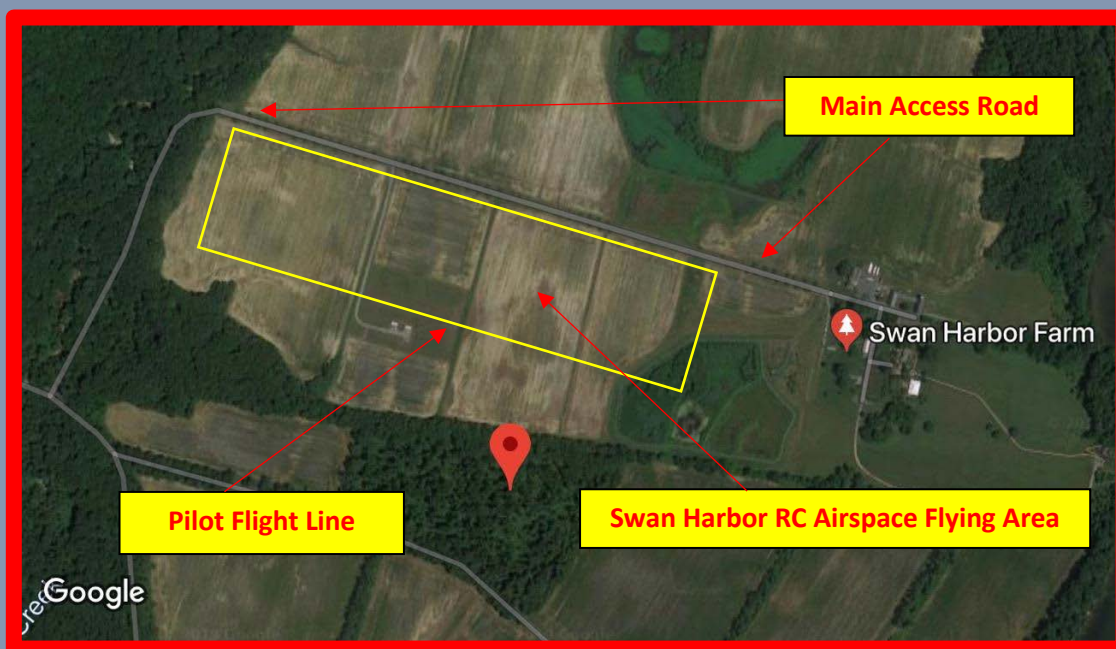


“RC Flying Games: Demo Derby, Bowling or Spot Landing depending on number of members participating”



General Information:

- **Safety First by Bob Walker:** *We have really been lucky over the years in that we have had no major accidents at our field. We never had a long list of rules at the field like other clubs. The two basic ones are “Fly Safe” and “Be Courteous”. Along those lines, a few common sense things can make things even safer:*
 - **Wear eye protection:** *Things do fly off airplanes.*
 - **Flying too close to the Pilot Safety Fence and Pit Area:** *It has been noticed by several members this year that more and more people fly their planes too close to and/or over the safety fence at the pilot stations. Everyone should be flying out further from the safety fence, especially if someone else is flying their plane at one of the pilot stations. Please fly safe!*
 - **Plane Hold Downs:** *For your safety and others, please use the available plane starting “Hold Downs” when starting your gas or glow powered planes. They are stored in the black trash can under the 1st canopy. Also, we strongly urge that you stand behind your plane while revving up your engine. You never know when a damaged propeller tip or blade will fly off in your direction if you stand in front of or to the side of the propeller’s path.*
 - **Driving into the Field:** *When driving down the entrance road and crossing the runway, please stop and check to see if there is a plane landing or taking off. Someone watching their plane cannot always see a vehicle crossing the runway. It is up to you to check for a low flying plane.*
 - **Flying too far out and crossing the Main Access Road:** *As a general rule, please fly inside our approved airspace and do not fly over or past the main access road or the Swan Harbor Farm reception grounds to the right.*



If you have any other safety concerns, please let us know. Happy flying, Bob Walker.

- **Protection from the sun:** *The hot summer sun is still here and now is the time to take care of yourself in addition to your RC equipment. The nature of our great RC hobby dictates that we are out in the sun while we fly our aircraft. We need to be mindful and diligent about taking care of ourselves against the harmful effects of the sun. It is very important to apply sunscreen and wear hats (wide brimmed like a Tilley Hat), if possible to protect our heads, necks and faces from the problems the sun can cause down the road. Just friendly words of advice for our members.*

Club Photo Gallery: *Pics by Bob, Ron, and Zeb*

Swan Harbor RC "Field of Dreams"

Bob Bartell and Ed Sugg assisted to show how high the corn is this summer





Chris and Rare Bear

Lewis getting ready to unload his planes



Big Mike



Gary hanging it on the prop



Master Chef Bob



Good Friends



August Club Meeting & Cookout



*Gary's Van
think he loves
RC flying?*



Lost & Found

Bob & Kevin





Randy Fletcher and Dale. Randy cooks our BBQ meats for our Open House events. Nice ride Randy!





*Herman and Stephan.
Herman is testing Stephan's
plane.*





*Kevin and Herman
Herman's RC Flight School*



Dale's Toledo Special



*Tom running up his
Cub engine*



Marvin's UMX Timber



*Bob Walker had this pic
of the Swan Harbor RC
field at the very
beginning of time. It
was very rough as you
can see.*



*Dan Seldomridge and his wife, Carol.
Carol is a new member of SHRC.
Welcome to the club, Carol.*



Dan's Freewing Avanti S Jet





Bill and his Cub



*Flight line pics
by Zeb*



Zeb's 60" Extreme Flight

Extra V2

Torque 4016T/500KV Motor

Zoar 16x7e Prop

Airboss 80A ESC

Lemon RX Satellite RX

Hitec Digital Servos

*Ron Moyer and his electric
Cub*





Mark and his T45 Goshawk

Tech Corner: Transmitter Dual Rate & Exponential Controls for RC Aircraft

By: Ron Lazzeri

Dual Rate Control: What is it, what does it do, and how can we use it effectively?

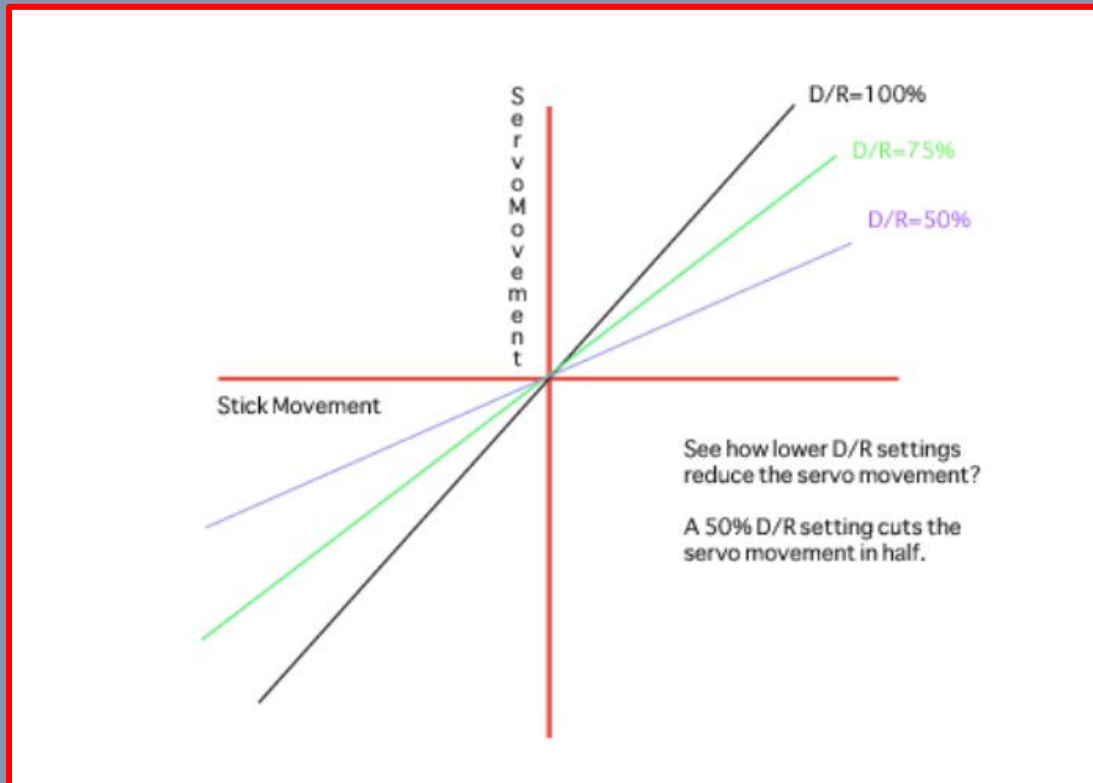
Simply stated, Dual Rate Control settings are two servo travel settings, High & Low, for the Elevator, Ailerons, and Rudder. On all transmitters the Dual Rate settings control the amount of servo travel in direct relation to the transmitter stick movements for the Elevator, Ailerons, and Rudder. Usually, the Dual Rate settings are configured with a default “High Rate” and “Low Rate” setting of 100% for each control surface until the user changes them to match their flying skill and preferences. It may take several flights to get the settings changed to your liking and style of flying. The throttle control is usually not considered for Dual Rates.

Dual Rate settings can be set up based on the type of flying you do with your aircraft. You can set up Dual Rates differently if you fly 3D maneuvers versus Pattern Flying, or just simple Straight & Level flying. 3D flying requires a high amount of servo travel for a lot of surface deflection to perform the 3D maneuvers. In contrast Pattern and Straight & Level flying require a lesser amount of surface deflection to afford more stable and smooth maneuvers.

Graph 1 below shows the amount of servo and transmitter stick movement based on a “High Dual Rate” setting of 100% and “Low Dual Rate” settings of 75% and 50%. Notice that the servo and stick movements at 100% are equal to each other. For every degree of stick movement there is an equal degree of servo movement or surface deflection. However, the “Low Rate” settings of 75% and 50% have a much lower degree of servo movement or surface deflection compared to your stick movements. The important lesson here is that you can control the amount of servo travel and surface deflection, for the Ailerons, Elevator, and Rudder to match the type of flying you want to do and flying command of your airplane.

If you are a “Pattern or Straight & Level” flyer and you have a hard time keeping your plane stable, you can adjust the “Low Dual Rate” controls to have a lesser amount of servo deflection to help make the airplane controls less sensitive. You can keep the “High Rate” setting at its original setting of 100% adjusting only the “Low Rate” setting to suit your flying control preference. Please read your transmitter’s manual for the procedure to adjust the “Dual Rate” controls. You will want to program all of your planes with the same switches so it will be consistent from plane to plane. Please note each plane will have different “Low Dual Rate” settings to match each of your airplane’s flying characteristics. This will certainly make flying your airplane more enjoyable and less stressful. It may even reduce your chances of a mishap because the controls were too sensitive while flying and landing.

Graph 1: Dual Rate Settings



Exponential Controls:

In contrast to “Dual Rate” controls, Exponential (or Expo) settings do not change the total amount of servo movement or surface deflection, but it does change the proportional rate or speed at which the servo movement responds in relation to the stick movement. See Graph 2 for a better visual explanation of the movement correlations.

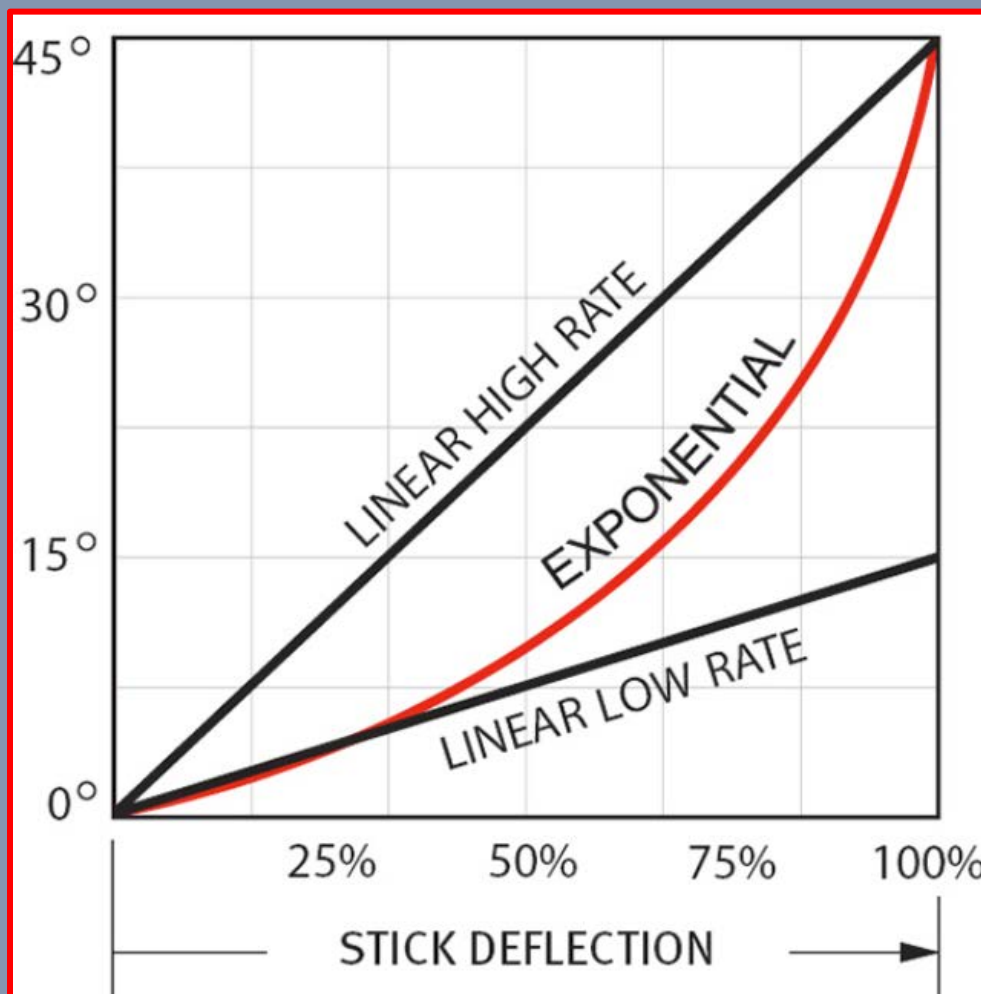
The Exponential setting will help to soften (lessen) the response of the servo movement in relation to the stick movement at the beginning portions of your stick’s movements. If you move the transmitter stick from 0 to 100% you will see that the servo moves at a different proportional ratio but eventually catches up as it approaches the end of the full stick travel. The servo will move 100% to equal the stick movement at the end. As a result, the higher the Exponential rate you program in your transmitter for each surface control, it will have a greater softening or delayed effect on the servo movement in relation to the stick movement.

The use of Exponential or “Expo”, as it is often called, will also help make your flying more stable and less sensitive. Just like “Dual Rates”, Exponential is a user controlled setting and can be set up based on your style of flying, skill level, and the type of aircraft you are flying.

You will have to experiment and decide for yourself whether to use only “Dual Rates” or both “Dual Rates” and “Exponential”. As always, start with a lower rate and make small adjustments until you find a setting that suits your needs. Please refer to your transmitter’s operating manual for specific ways to program these functions. A word of caution, depending on your transmitter (Futaba, Spektrum, Airtronics, etc.) the effects of Positive and Negative settings for Exponential are reversed. One way the setting has a lessening effect and the other way increases the effect of the servo proportional movement. Be sure to decide which you want to use. Most users usually choose to lessen, or soften the servo movement effects.

In Graph 2, the Linear High “Dual” Rate and Linear Low “Dual” Rate lines are without any Exponential programmed in. The Exponential line shows the effect of Exponential programmed in and its softening or delayed effect of servo travel. Remember, Exponential settings do not change the amount of servo travel from 0 to 100%. The amount of servo travel is changed, or reduced, with the “Low Dual Rate” setting.

Graph 2: Exponential Settings with a Softening Effect



RC Vendor listing: by Ron Lazzeri

If you have a "Vendor" that you use and would like to add it to our RC Vendor Listing, please send me an email with the details and I will add it to the list. Sharing this information will help new & old members alike. Thank You... ronlazzeri@verizon.net

Floureon LIPO Batteries	<u>www.floureon.com</u>
Hobby King	<u>www.hobbyking.com</u>
Redwing RC	<u>www.redwingrc.com</u>
Hansen Hobbies	<u>www.hansenhobbies.com</u>
Pulse Batteries	<u>www.pulsebattery.com</u>
Electrodynamics RC	<u>www.electrodynam.com</u>
Valley View RC	<u>www.valleyviewrc.com</u>
RC Extreme Power	<u>www.rcextremepower.net</u>
Aircraft International	<u>www.aircraftinternational.com</u>
Tower Hobbies	<u>www.towerhobbies.com</u>
Sullivan Products	<u>www.sullivanproducts.com</u>
Motion RC	<u>www.motionrc.com</u>
Revolectrix	<u>www.revolectrix.com</u>
Fromeco Scale Avionics	<u>www.fromeco-scale-avionics-llc.myshopify.com</u>
Horizon Hobby	<u>www.horizonhobby.com</u>
Tail Dragger RC	<u>www.taildraggerrc.com</u>
Sonic-Tronics Inc.	<u>www.sonictronics.com</u>
B&B Specialties	<u>www.bennettbuilt.com</u>
F3A Unlimited	<u>www.f3aunlimited.com</u>
Esprit Tech	<u>www.espritmodel.com</u>
Falcon Propellers	<u>www.falconpropellers.com</u>
Chief Aircraft	<u>www.cheifaircraft.com</u>
Wrong Way RC	<u>www.wrongwayrc.com</u>
TNT Aluminum Landing Gear	<u>www.tntlandinggear.com</u>
Micro Fasteners	<u>www.microfasteners.com</u>
JTEC Mufflers	<u>www.jtecrc.com</u>
Cable Ties	<u>www.cabletiesandmore.com</u>
NoBS Batteries	<u>www.hangtimes.com</u>

RC Extreme Hobbies

www.xtremerchobby.com

Note: The Musser's hobby shop has been downsized and is now a combination of outdoor hunting, fishing, and RC products store.

35 Friendly Drive • Quarryville, PA 17566

Phone: (717) 284-0164

Email: info@xtremerchobby.com

Hours: Sunday 10AM-6PM

Monday-Saturday: 10AM-8PM (except holidays)

Radio Control Hobbies www.rc-hobbies.com/baltimorenorth

1512 York Road, Lutherville, MD 21093

Tel: 410-376-7076

Email: BaltimoreNorth@rc-hobbies.com

Hours: Mon-Friday 11:00am - 7:00pm

Saturday 10:00am - 6:00pm

Sunday 11:00pm - 4:00pm

Yard Sale Bulletin Board:

- *This is a new section in our newsletter at the request of some club members. This section is for you to post items in the newsletter on a monthly basis that you want to sell. If you have something you want to sell, please send me an email with all the details of the item(s) you want to sell, asking price, a picture image, and your contact information to ronlazzeri@verizon.net. I will be sure to include it in the next month's newsletter.*

Club Meeting Schedule:

- **January thru April and October thru November:**
 - *Monthly club meetings will now be held at the Golden Corral in Aberdeen, MD on Route 40 on the 2nd Saturday of each month 10:00am-12:00pm. We will be meeting in one of the small dining rooms and enjoy their full breakfast buffet.*

- May thru September:
 - *Monthly club meetings and a cookout will be held at the Swan Harbor RC flying field on the 2nd Saturday of each month starting at 10am. The Fall Club Picnic will be held on the same day as the September club meeting.*
- December:
 - *The December club meeting will be held at the annual Christmas Party. Details of this event will be made available in advance of the party.*

Membership Dues Policy “Revised March 2019”:

At the March 16th club meeting, the Board and attending members discussed our current club’s Membership Dues Policy and came to an agreement on a new set of guidelines to make it clear and fair for all members, new and existing. The following Membership Dues Policy was agreed upon and adopted.

To pay your club dues for the season, either as a renewing member or a new member, please forward them to Steve Snyder, Treasurer. As you all know we depend on our dues to fund projects and general maintenance for our club.

Existing Annual Membership Renewals:

- Annual renewal membership fee: \$75.00
 - Renewal period: 1/1/YR thru 3/31/YR (Payment is due by 3/31/19)
 - Grace period is for 2019 only: 4/1/19 thru 4/15/19
 - *If a member’s renewal dues are not paid in full by 4/15/19, then that member is considered to be in default. If that member wants to join the club after 4/15/19, then that member is required to pay at the full new member rate. The member in default will not be permitted to fly at the field after 4/15/19 until their membership dues are paid in full. There will not be a Grace Period in 2020 and thereafter.*
 - *Note: All members are urged to pay their renewal fee as early as possible during the renewal period since club expenses are budgeted and paid based on membership fee receipts.*

New Membership Dues:

- Full year membership fee: \$125.00
 - Joining period: 1/1/YR thru 12/31/YR
 - Fee Includes:
 - \$75.00 annual membership fee
 - \$50.00 1st year initiation fee
 - *Note: New members joining the club on 9/1/YR or after of that same year are considered paid in full for the current year and the immediately following year. The reason for this exception is that the current flying season is about 75% over and we want to give new members an incentive to join our club.*

AMA & FAA Membership Requirements:

In an effort to ensure our club's compliance with AMA and FAA rules and regulations we are requiring that all members, whether a new member or an existing member renewal, the following documents are required to be submitted to Steve Snyder when dues are paid:

- **Swan Harbor RC Membership Form**
 - *The form can be found on the Swan Harbor RC website*
- **Proof of AMA & FAA membership**
 - *Provide a copy of each membership's email or registration card*
 - *The copy must include the registration number*

Note: If any member sees an unknown person flying at the field, you should ask the flyer if they have a current membership card. If they say they do not, then ask them if they would like information on how to join. Explain that membership is a requirement for flying at the field.

General Information

What are Members Working On: *Building a new aircraft, assembling an ARF, working on an old reliable? We'd love to hear what you are working on. Send us some information and a couple pics of your project and we'll post it in the monthly newsletter. Send your emails to: ronlazzeri@verizon.net.*

Newsletter: *To receive the Swan Harbor RC Newsletter by email, please send a request to: sslotnick@mac.com.*

Photos: *Anyone who would like to have new photos appear in the slideshow or the photo gallery is encouraged to send their photos to Stephen Slotnick at sslotnick@mac.com and he will add them as soon as he can.*

Interest in Joining the Club: *Please see the instructions on the Swan Harbor RC website www.SwanHarborRC.com under the heading "How to Join." Additional membership information or questions can be obtained from Steve Snyder at (443) 243-4324 or email: snyder800@gmail.com.*

Harford County's No Smoking Policy on County Property: *We follow all county rules and regulations and ask for your cooperation. Thank You!*

