

## TOP 56

3-ZIMMER-WHG || 7. OG



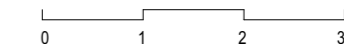
Vorraum	4,30
WC	2,65
Bad	4,13
Wohnküche	36,64
Zimmer 1	13,03
Gang	4,10
Zimmer 2	10,07
Abstellraum	2,74

**77,66 m<sup>2</sup>**

Balkon	16,75 m <sup>2</sup>
Terrasse	13,96 m <sup>2</sup>

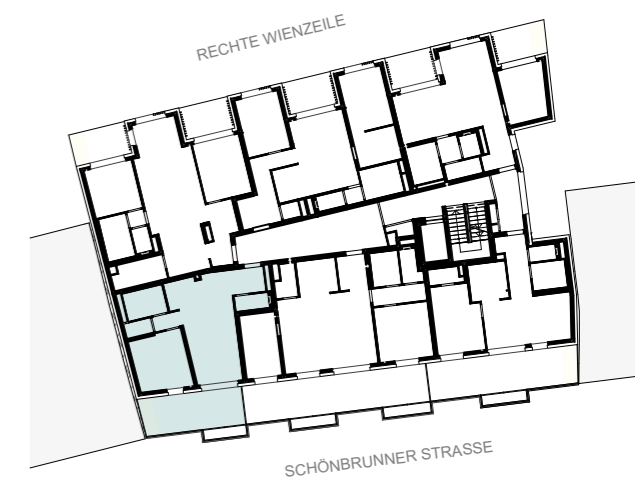
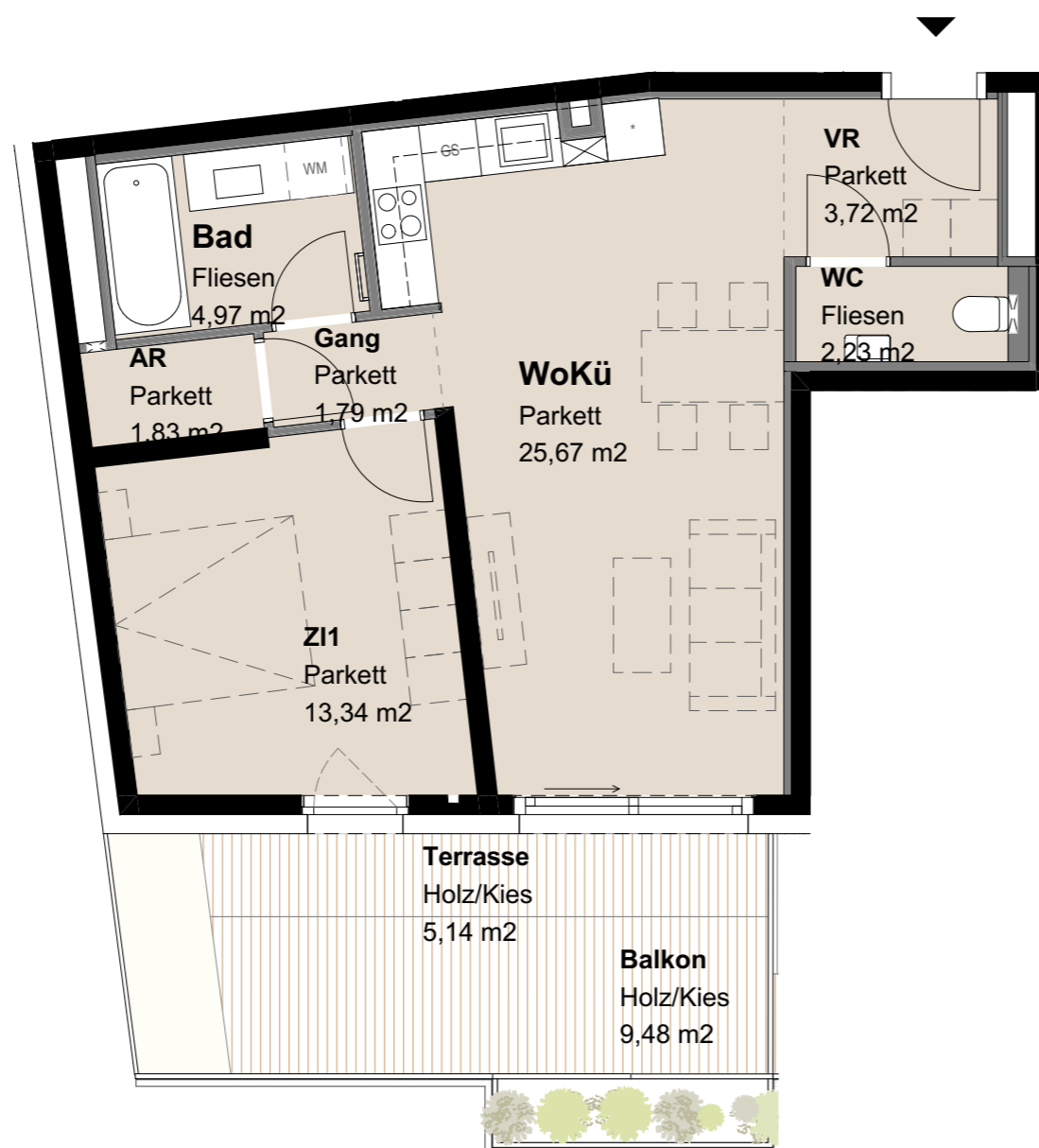
### Legende Möblierung

- Vertragsbestand
- Möblierungsvorschlag



N





## TOP 57

2-ZIMMER-WHG || 7. OG



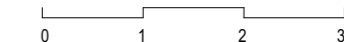
Vorraum	3,72
WC	2,23
Bad	4,97
Wohnküche	25,67
Zimmer 1	13,34
Gang	1,79
Abstellraum	1,83

**53,55 m²**

Balkon	9,48 m²
Terrasse	5,14 m²

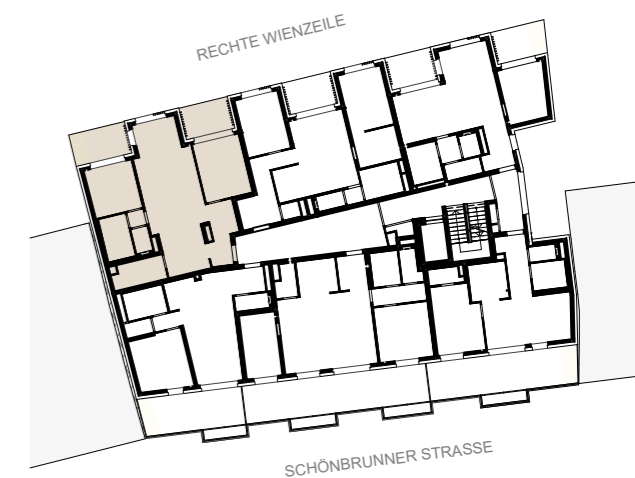
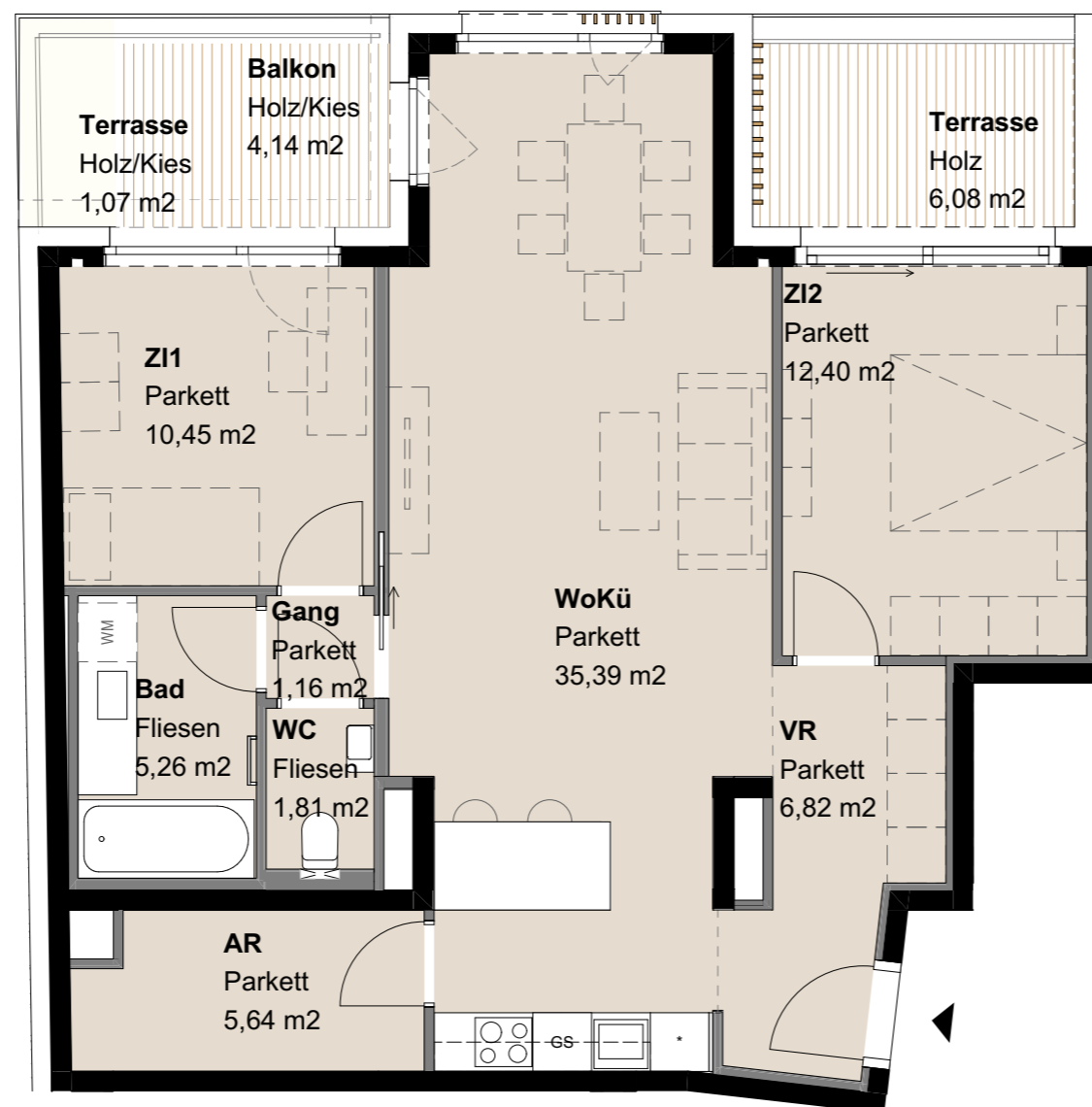
### Legende Möblierung

- Vertragsbestand
- Möblierungsvorschlag



N





## TOP 58

3-ZIMMER-WHG || 7. OG



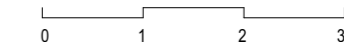
Vorraum	6,82
Abstellraum	5,64
WC	1,81
Wohnküche	35,39
Bad	5,26
Zimmer 1	10,45
Zimmer 2	12,40
Gang	1,16

**78,93 m<sup>2</sup>**

Balkon	4,14 m <sup>2</sup>
Terrasse	6,08 m <sup>2</sup>
Terrasse	1,07 m <sup>2</sup>

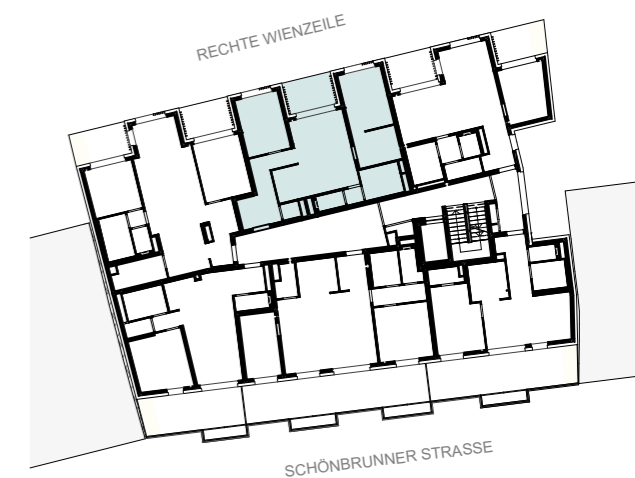
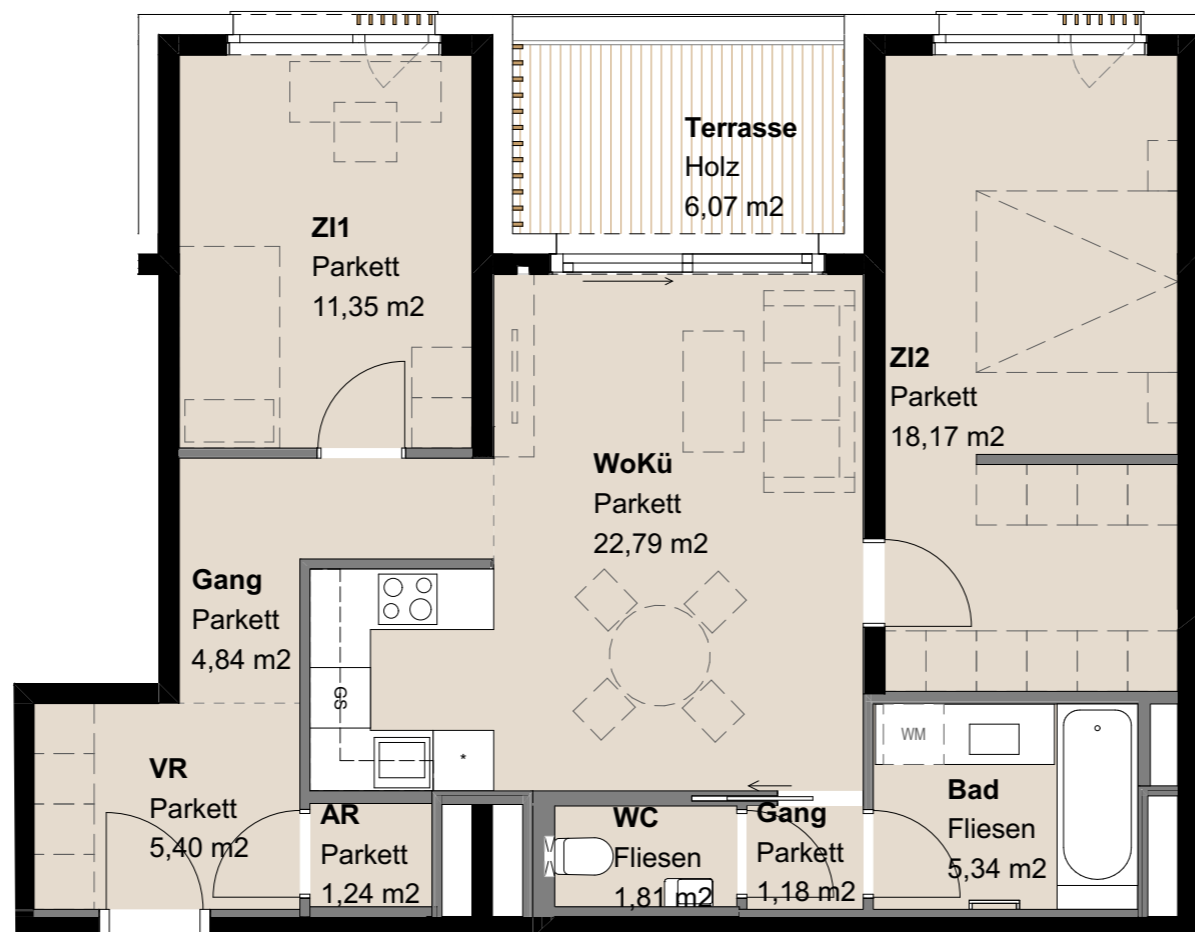
### Legende Möblierung

- Vertragsbestand
- Möblierungsvorschlag



N





## TOP 59

3-ZIMMER-WHG || 7. OG



Vorraum	5,40
Gang	4,84
Zimmer 1	11,35
Wohnküche	22,79
Zimmer 2	18,17
Bad	5,34
Gang	1,18
WC	1,81
Abstellraum	1,24

**72,12 m<sup>2</sup>**

Terrasse 6,07 m<sup>2</sup>

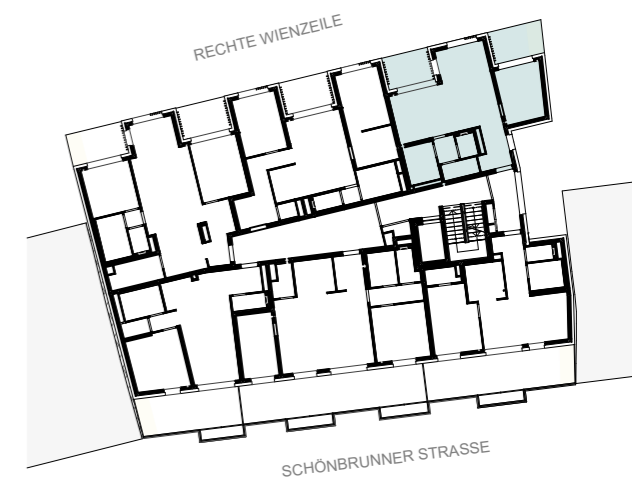
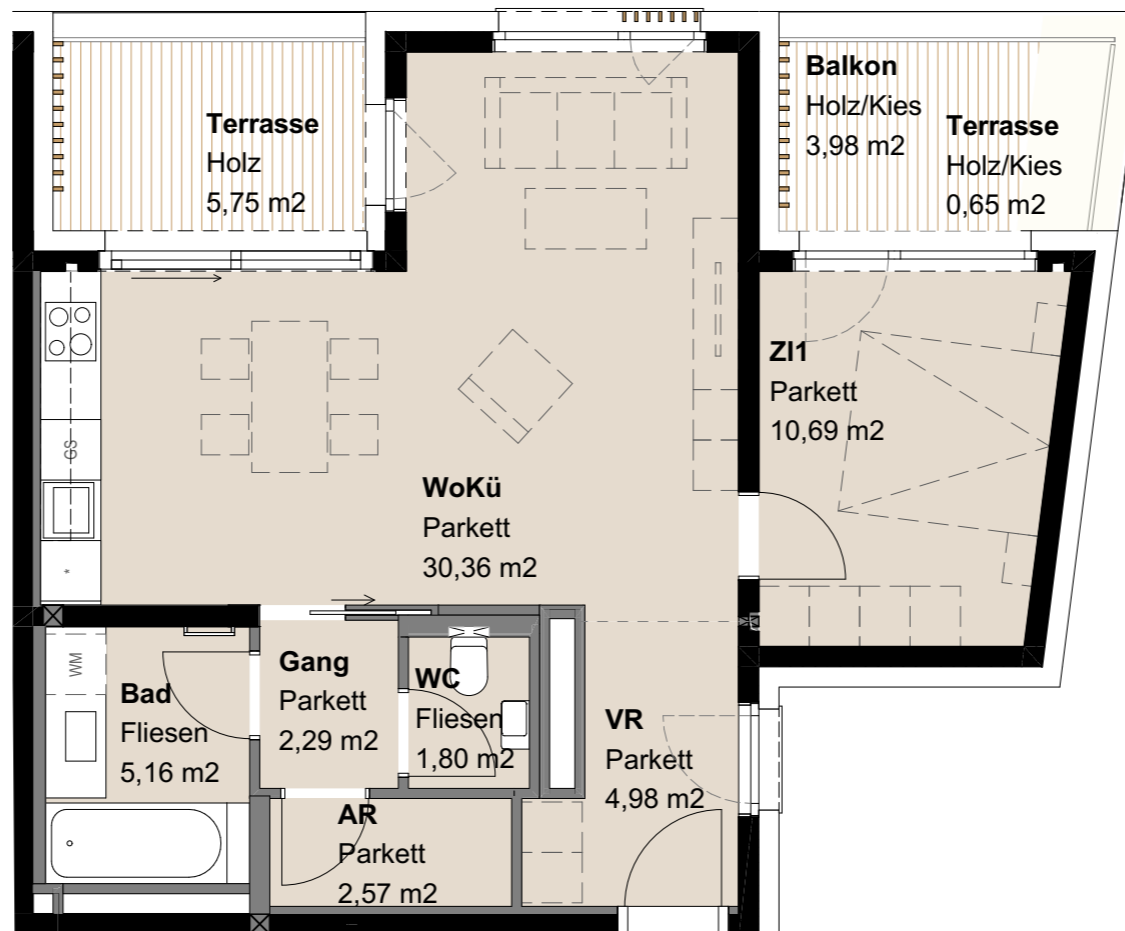
### Legende Möblierung

- Vertragsbestand
- Möblierungsvorschlag



N





## TOP 60

2-ZIMMER-WHG || 7. OG

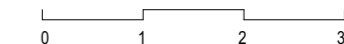


Vorraum	4,98
WC	1,80
Bad	5,16
Wohnküche	30,36
Zimmer 1	10,69
Gang	2,29
Abstellraum	2,57
<b>Gesamt</b>	<b>57,85 m<sup>2</sup></b>

Balkon	3,98 m <sup>2</sup>
Terrasse	5,75 m <sup>2</sup>
Terrasse	0,65 m <sup>2</sup>

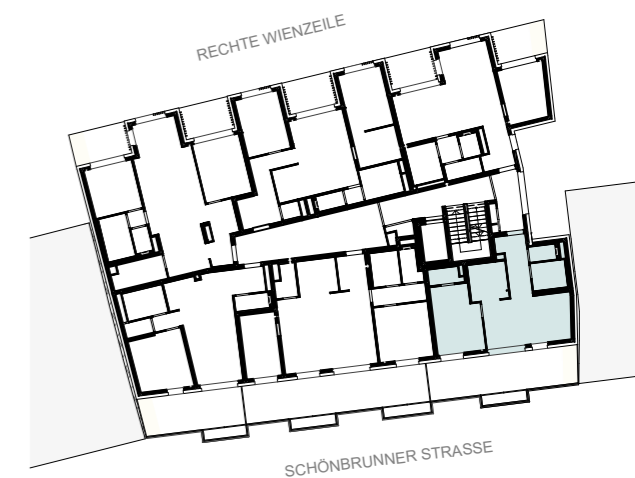
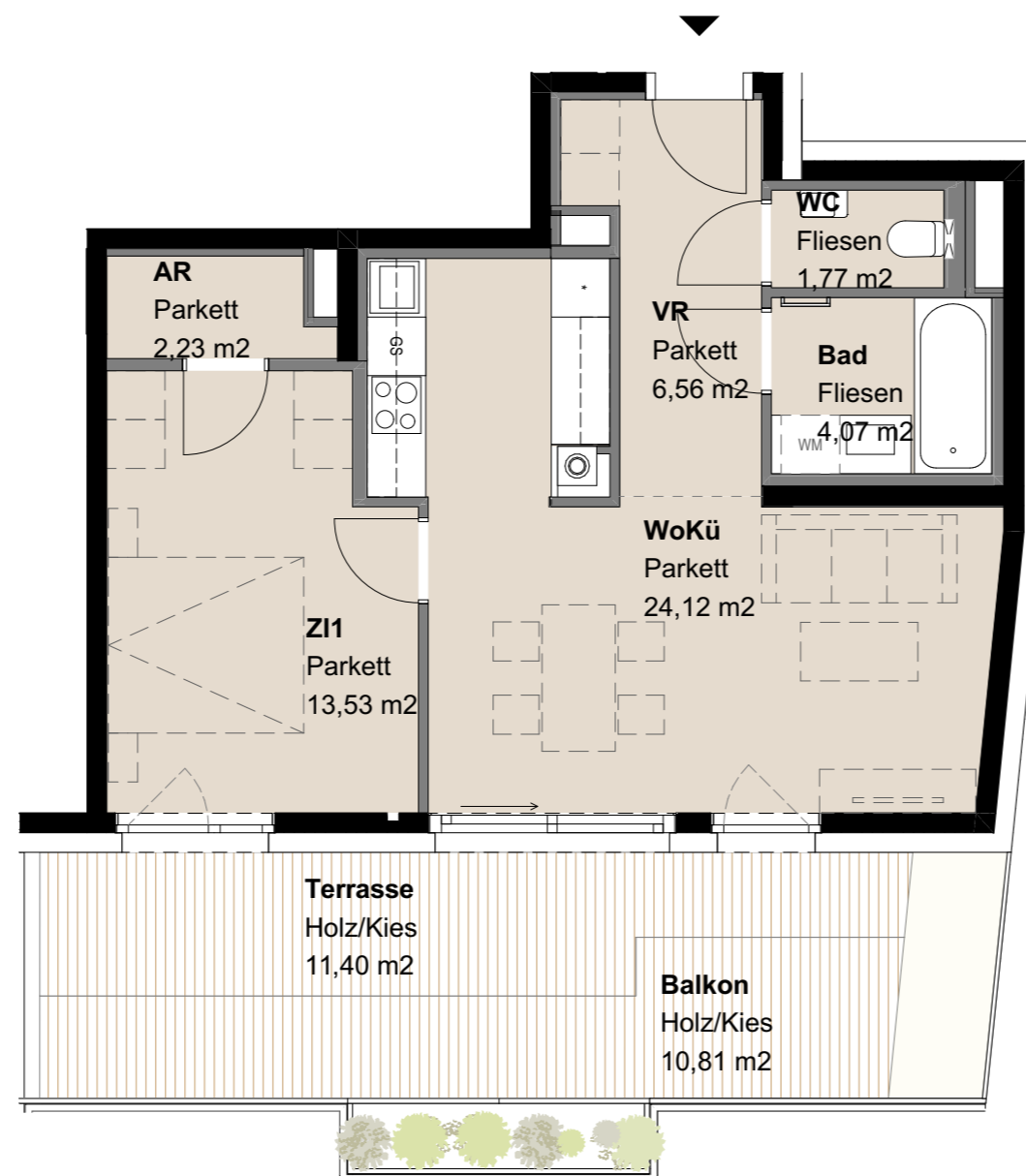
### Legende Möblierung

- Vertragsbestand
- Möblierungsvorschlag



N





## TOP 61

2-ZIMMER-WHG || 7. OG

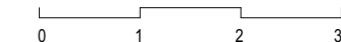


Vorraum	6,56
WC	1,77
Bad	4,07
Wohnküche	24,12
Zimmer 1	13,53
Abstellraum	2,23
<b>Gesamt</b>	<b>52,28 m²</b>

Balkon	10,81 m²
Terrasse	11,40 m²

### Legende Möblierung

- Vertragsbestand
- Möblierungsvorschlag



N

