



SOUTHERN ENDURO RIDERS ASSN.

Information Sheet

In a formal banquet and organizational meeting recently held in Jackson, Miss., the representatives from all but two District 19 clubs were on hand to ratify and support the official formation of the Southern Enduro Riders Association. Representatives from the states of Arkansas, Louisiana, and Mississippi met and dined at Coliseum Ramada Inn on November 30th, 1974, and set in motion possibly the most important organization that the dirt riders of the AMA 19th District will ever have the opportunity of being associated.

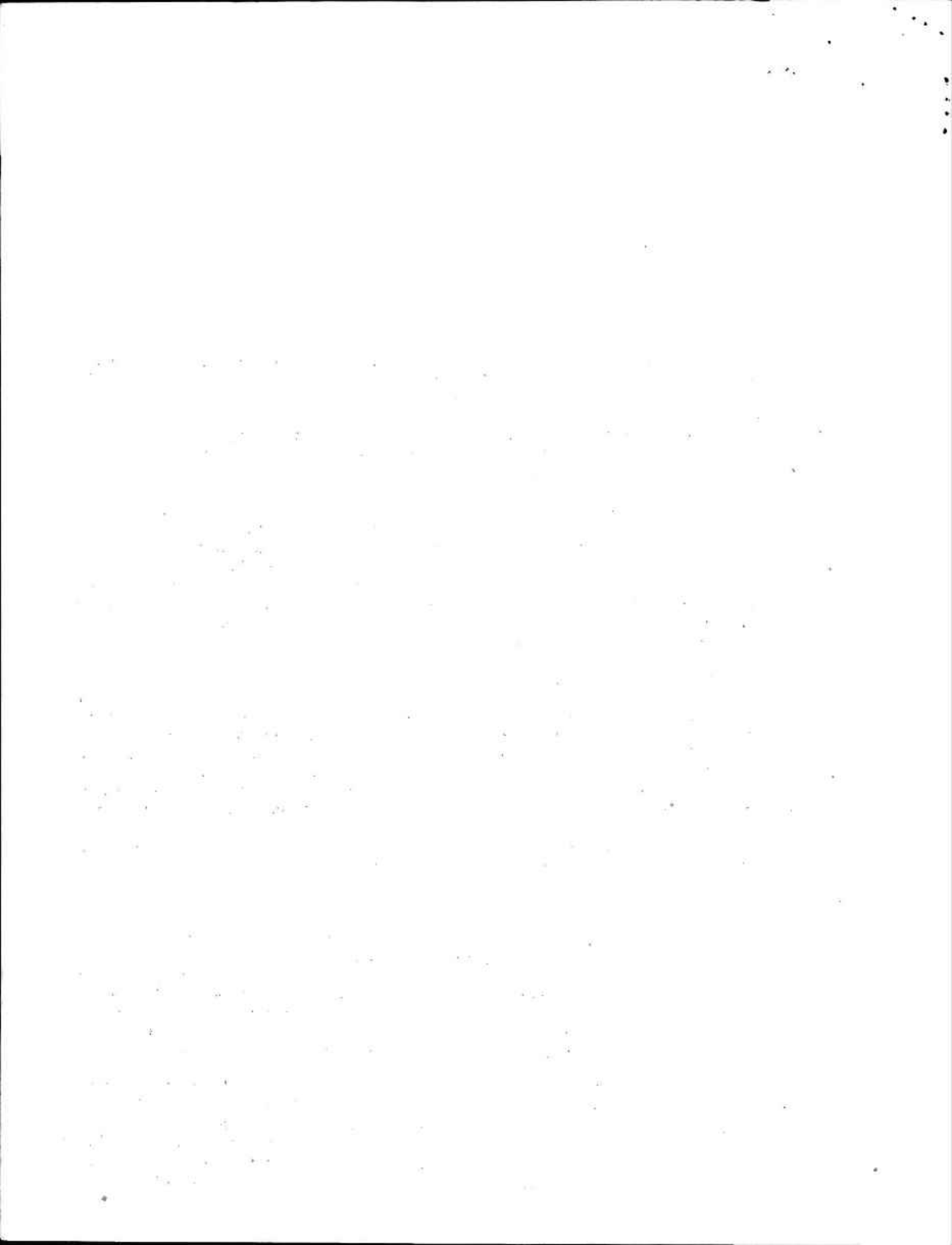
The need for district-wide organization and coordination became obvious over the past few years when we would find ourselves wanting to attend two different events on the very same day. The events were scheduled on the very same day because nobody ever took the time to find out from the other clubs in the area if they had events planned. We also found by attending events in different areas in Arkansas, Louisiana, and Mississippi we could not attempt to guess by what rules the events would be governed and so we were tempted not to attend. We hope that these and other problems such as these are problems of the past.

In the following pages we hope to explain to you exactly what the Southern Enduro Riders Assn. is and what it will try to do for you as a rider and competitor in the AMA 19th District. Supplemental rules and other rider related information will be sent to you if and when you are accepted as a supporting member of this organization. Enclosed in this packet that you have in your hand now is your personal entry form to be filled out completely in ink should you desire to become a member. Upon being accepted for membership in the SERA, you will be sent a laminated membership card and medical alert tag to be carried with you at all times while you are participating in any event to aid in medical attention should it become necessary; a large cloth patch for your jacket to show that you are a member of the SERA; and a colorful adhesive sticker for your car or bike or whatever.

PURPOSE

The Southern Enduro Riders Association is an association of clubs and promoters from the AMA 19th District that have grouped together to work toward general improvement of enduro events and to improve the quality of the events that now are taking place. The SERA would like to promote good, clean competition through well-organized events and standard rules and regulations to govern those events. The SERA will provide better events for those who wish just to ride and enjoy the great out-of-doors as well as those that wish to win and be recognized for doing so.

The underlying purpose for the union of all the clubs in the SERA is to provide a circuit of events beginning early in each calendar year and continuing until December of each year when the yearly SERA banquet and awards presentation will take place. At each event that is sanctioned by the Southern Enduro Riders Assn., riders that are independent rider members of the organization will compete and attempt to accumulate points that will go towards a District 19, SERA championship program.



SERA Info Sheet (Continued)

MEMBERSHIP

The governing body of the Southern Enduro Riders Assn. shall be a Club Council that is made up of two representatives from each sponsoring member club from the 19th District. The Club Council shall be the sole governing authority of the SERA and the decisions that they make at the official meeting of the SERA Club Council shall be binding on the SERA members and future events.

As a sanctioning body, the SERA Club Council has the right to set up guidelines and supplemental rules to govern their sanctioned events. And as a sanctioning body, the SERA has chosen to allow individual memberships in the SERA. The individual memberships are for your benefit as an independent rider. It has been ratified by the Club Council that individuals requesting membership as independents shall file for membership with the enclosed form and attach the required membership fee. This fee shall be for a period of 12 months beginning January of each year and continuing until December of the same year. The funds shall be payable to the Southern Enduro Riders Assn., and will be mailed to the Secretary-Treasurer and Points Steward for that year (date will be posted on each years entry blank in the upper left-hand corner). The funds that are accrued in the SERA will go to awards and banquet costs at the year-end awards night as well as to public relations materials and promotional considerations that will help the image of motorcycle riders in the eyes of the public.

THE CHAMPIONSHIP SERIES CIRCUIT

As a result of your Club Council and their sponsoring organizations, there is now a circuit of events for each calendar year in which you may ride and compete. There is a system of points that has been set up to award to the winners in the dozen or so events that will occur in each calendar year. At each SERA event the top twenty riders at the event shall receive points in order of their finish that will be tallied by the Points Steward following each event and posted on a master list of SERA members. There will also be bonus points paid to the first five places in each equipment class for each event and for each special class including Junior, Seniors, and Powderpuffs. In addition to this new system there will be a separate 'A' class and a separate 'B' class in which riders can compete. Expert and Novice riders will not have to ride in the same classes any longer. The only option for 'A' riders will lie in the Senior class. Once an 'A' rider becomes 40 years old, he has the option of remaining in the 'A' class or competing in the Senior class, which will be unlimited as far as bike size or rider classification (A or B). Additional information as far as points to be paid at each event and the class size separations for 'A' riders and 'B' riders will be sent with your membership packet as each of you are accepted as rider/members.

The events year shall be climaxed by an awards dinner and banquet that will be held at different places from year to year. Awards shall be given to the top twenty riders in the district as well as verbal recognition for others attending. December shall be the banquet month and no enduros shall be scheduled during this time to facilitate the figuring of the year's points accumulation by the Points Steward.

SERA Info Sheet(Continued)

WHO ARE THE MEMBERS OF THE CLUB COUNCIL OF THE SERA?

All AMA clubs in the District of Arkansas, Louisiana, and Mississippi are participating in the SERA Club Council Championship Program. In addition, the clubs that were not AMA prior to the start of the SERA season are now chartered AMA clubs. They are bannng together to give you a better place to ride and a better event to ride. It is their way of saying thank you to the riders of our enduros who have been very understanding and patient with us while we were learning about sponsoring enduro events in the past.

Listed below are the SERA clubs in our district and their addresses. These clubs will be supporting the SERA in District 19 this year and we hope that you will become a part of the group by filling out your entry blank and re- turning it to the address shown on the entry blank with your entry fee. This fee will go to into making everything better for everyone.

Remember: You must fill out the entry blank completely....if you do not know your blood type or drug allergy(if any), you must find out and fill the infor- mation in on the entry blank. This will be for your own benefit in case of an accident should one occur.

The Bayou Bikers M/C-AMA & SERA
c/o Mr. Ellis Johnson
7050 Hooper Road
Baton Rouge, LA 70811

The Crash & Burn M/C-AMA & SERA
P.O. Box 564
Picayune, MS 39466

The Dirt Dobbers M/C-AMA & SERA
c/o Mr. Bill Price
219 Marion Ave.
Crystal Springs, MS 39059

The Master Links M/C-AMA & SERA
P.O. Box 65,
Wiggins, MS 39577

The Ridgerunners M/C-AMA & SERA
P.O. Box 478
Port Gibson, MS 39150

The TrailBlazers M/C-AMA & SERA
c/o Mr. Basil Butler
2915 South Maple
Little Rock, Ark. 72204

The Trailmasters M/C-AMA & SERA
P.O. Box 731
Picayune, MS 39466

These clubs are District 19 clubs or new groups that are forming and will schedule enduros through the SERA for next year and will decide whether or not to offer point paying events before 1976. Changes in their status will be sent to you as they occur.

The Pelican Enduro Team-AMA
P.O. Box 1896
Shreveport, LA 71166

Red Stick Enduro Team-AMA
c/o Mr. Don David
4645 Arrowhead
Baton Rouge, LA 70808

New Orleans Enduro Team
c/o Mr. Mike Burgess, Competition Cycles
1400 Fulton Street
Kenner, LA 70062

New Group-c/o Mr. Danny Reagan
Rt. 2, Box 1
Nesbitt, MS 38651

New Group-c/o Mr. Rusty Bond
Apartment I-14
Bayou View Apts.
Gulfoort, MS 39501

New Group-c/o Mr. David McGowen
Hattiesburg, MS 39401

