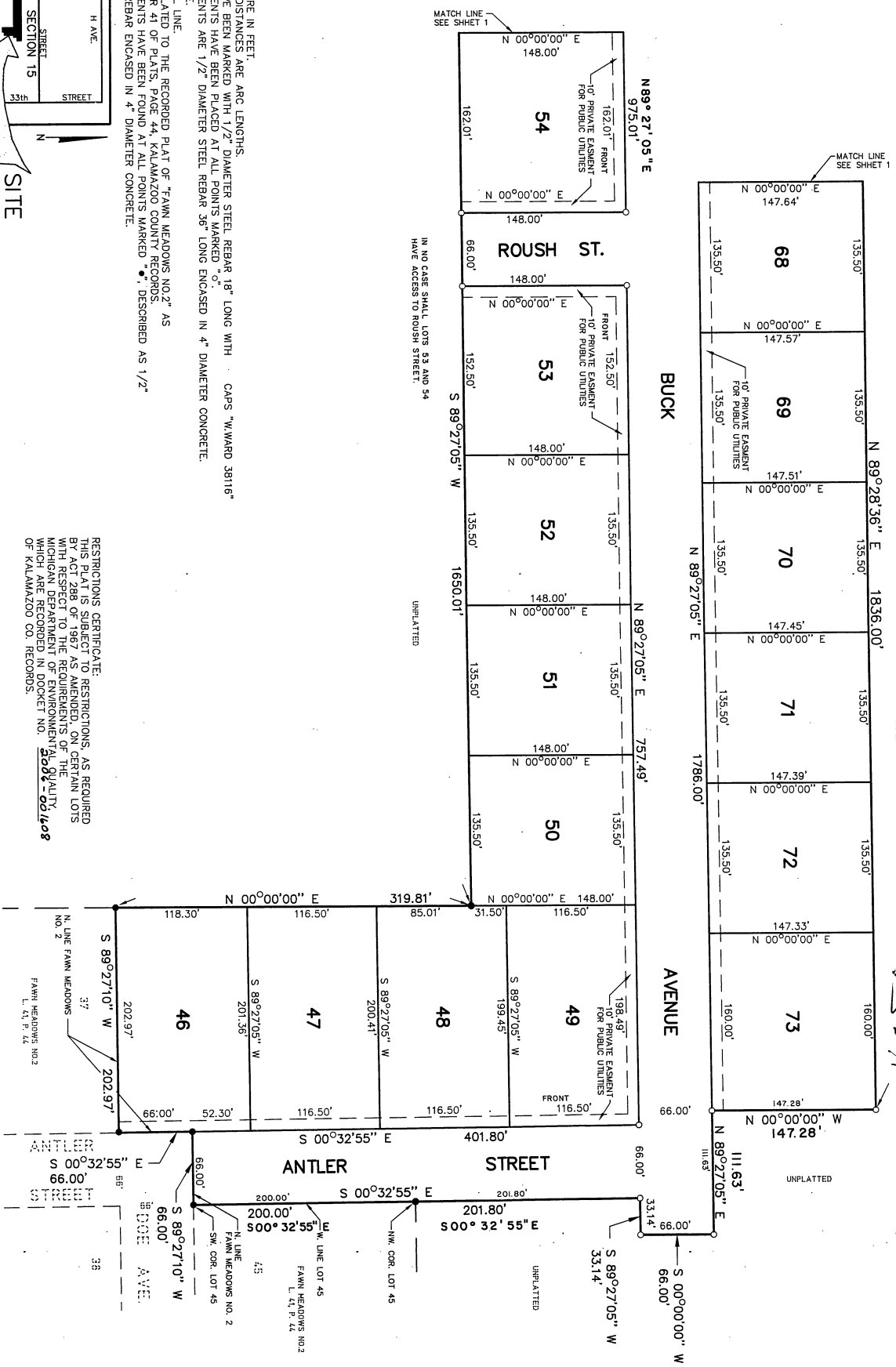


# FAWN MEADOWS NO. 3

SHEET 2 OF 3

BEING A SUBDIVISION IN PART OF THE NORTHWEST QUARTER OF SECTION 15, TOWN 2 SOUTH, RANGE 10 WEST, COMSTOCK TOWNSHIP, KALAMAZOO COUNTY, MICHIGAN,



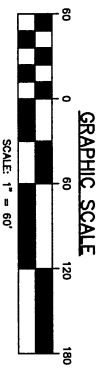
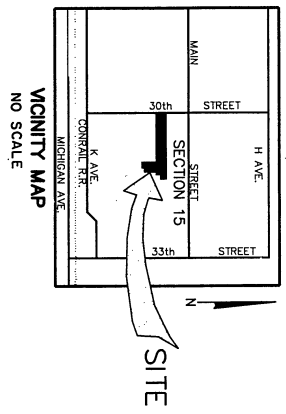
LEGEND:  
 ALL DIMENSIONS ARE IN FEET.  
 ALL CURVILINEAR DISTANCES ARE ARC LENGTHS.  
 LOT CORNERS HAVE BEEN MARKED WITH 1/2" DIAMETER STEEL REBAR 18" LONG WITH CAPS "WARD 38116"  
 CONCRETE MONUMENTS HAVE BEEN PLACED AT ALL POINTS MARKED "O".  
 CONCRETE MONUMENTS ARE 1/2" DIAMETER STEEL REBAR 36" LONG ENCASED IN 4" DIAMETER CONCRETE.  
 (R) = RADIAL LINE.  
 (NR) = NONRADIAL LINE.  
 BEARINGS ARE RELATED TO THE RECORDED PLAT OF "FAWN MEADOWS NO. 2" AS  
 RECORDED IN LIBER 41 OF PLATS, PAGE 44, KALAMAZOO COUNTY RECORDS.  
 CONCRETE MONUMENTS HAVE BEEN FOUND AT ALL POINTS MARKED "O", DESCRIBED AS 1/2"  
 DIAMETER STEEL REBAR ENCASED IN 4" DIAMETER CONCRETE.

RESTRICTIONS CERTIFICATE.  
 THIS PLAT SUBDIVISION RESTRICTIONS AS REQUIRED  
 BY ACT 288 OF 1967 AS AMENDED, ON CERTAIN LOTS  
 WITH RESPECT TO THE REQUIREMENTS OF THE  
 MICHIGAN DEPARTMENT OF ENVIRONMENTAL QUALITY,  
 WHICH ARE RECORDED IN DOCKET NO. 2008-001608  
 OF KALAMAZOO CO. RECORDS.

IN NO CASE SHALL LOTS 53 AND 54  
 HAVE ACCESS TO ROUSH STREET.

UNPLATTED

UNPLATTED



67825