

COPMEA Municipals

Volume 71 Issue 15 Newsletter

July 2015

COPMEA OFFICERS

Lina Cruz, President
Connie Cordova, Vice President
Anna Martinez, Treasurer
Chantel Robertson, Recording Secretary

COPMEA DIRECTORS

Gabriel Bernal, Sandra Recio
Patrick Gavazzo, Sylvia Pacheco
Joe Guzman, Ray Yocopis
Dianna Manning

PARLIMENTARIAN

Larry Felix

OFFICE STAFF

Chris Goldberg (chris.goldberg@copmea.com)
Barbara Shrum (barbara.shrum@copmea.com)

MEMBERSHIP RATES

Single \$4
Family \$8

ASSOCIATE MEMBERSHIPS

Single \$48 per year
Family \$96 per year

Office Hours

Monday: 1 p.m. to 5 p.m.
Tuesday-Friday: 8 a.m. to 5 p.m.

General E-Mail Address

communications@copmea.com

Web Site

COPMEA.COM

Telephone: 602-262-6857

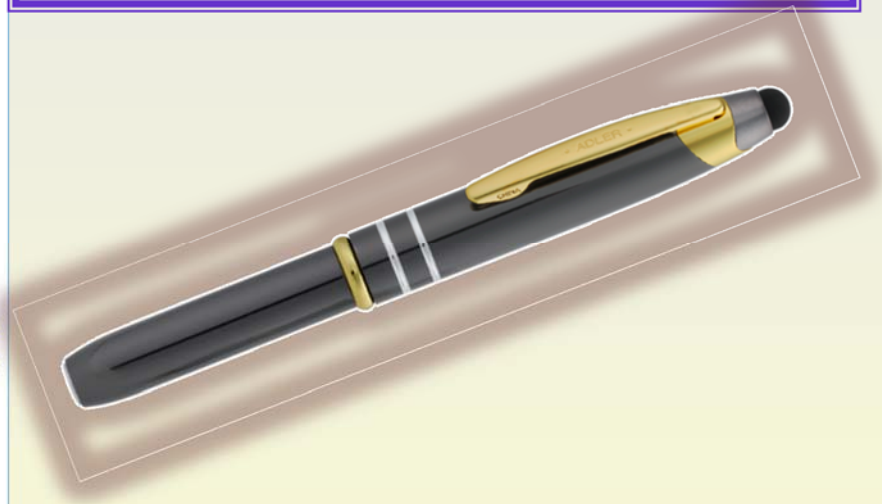
Fax: 602-534-1964

COPMEA MUNICIPALS (USPS 922-880) is published monthly for \$6 per year by the City of Phoenix Municipal Employees Association, 135 North 2nd Avenue, Personnel Building Basement, Phoenix, AZ 85003. (602) 262-6857.

**COPMEA NOW ACCEPTS CREDIT AND DEBIT CARDS
FOR YOUR PURCHASES**

A N D

**AS A VALUED MEMBER OF COPMEA, YOU WILL NOT BE
CHARGED A PROCESSING FEE**



For the month of July, for COMPEA members that refer a new member, you will receive this
Lexi Lighted Tip Pen with Stylus
Gunmetal/Gold - Black Ink

Join **COPMEA** for membership meetings to socialize, enjoy a light dinner, free BINGO, and your chance to win a door prize.

Washington Activity Center
2240 West Citrus Way
Phoenix, Arizona 85015-1900

09/15/2015
10/20/2015
11/17/2015
12/15/2015



COPMEA

Picnic at



Saturday, July 4th, 2015
3:00pm – 9:00pm

Unlimited use of Water Park Attractions

Waikiki Beach Wave Pool • Bora Bora Bay • Otter Slides
Kilauea Cove Slides • Captain Cook's Landing • Cyclone & Tsunami Slides
The Black Hole • Hurricane Slides • Tornado Twisters • White Serpentine Slide

All-You-Can-Eat Picnic:

Grilled Hamburgers & Hot Dogs • Baked Beans • Potato Chips
Potato Salad • Cookies • Unlimited Soft Drinks
Served from 5:00pm – 7:00pm

For Further Information and Tickets Contact:

Phone: 602-262-6858

\$14.00 COPMEA MEMBER PRICE

BIG SURF WATERPARK, 1500 N. McClintock Dr./Hayden Rd • Tempe, AZ 85281 • (480) 994-2297

No alcohol, food, glass containers, or outside beverages are allowed into the Waterpark. Only approved swimwear will be allowed on the water slides.

Summer 2015

Save the Date for next

Big Surf Waterpark Event

Saturday, August 22, 2015

3—9 p.m.

Same Venue as 4th of July

Spend Halloween in Las Vegas!

October 30th thru November 1st, 2015



Leaving Metro Transit Center October 30th at 7:30am
(loading begins at 7:00 a.m.)

2 hour lunch break in Laughlin

Lodging at
Golden Nugget Hotel & Casino
129 East Fremont Street

Members	\$150	Double Occupancy
Members	\$200	Single Occupancy
Non-Members	\$250	Double/Single Occupancy

\$50.00 (NON-REFUNDABLE) DEPOSIT REQUIRED

FULL PAYMENT BY SEPTEMBER 18TH

Returning to Metro Transit Center
Sunday, November 1st by 4:00pm

Valley West Travel July 2015 Vacations



- Las Vegas, 2 Nights Hotel with Air, \$189 pp
- San Diego, 2 Nights + SeaWorld, \$199 pp
- Disneyland, 2 Nights + 2 Day Hopper Pass, \$299 pp
- Honolulu, Hawaii, 5 Nights, Hotel/Air, \$799 pp
- Grand Canyon Railway Package (please call for details)
- Knott's Berry Farm Packages, Hotel, Tickets & More
(please call for details)

Note: certain restrictions may apply to all vacations.

Group Vacations

- Mexican Riviera, 7 Nights, October 3, 2015, \$654 pp
- Baja Cruise, 3 Nights, October 22, 2015, \$398pp
- Western Caribbean, 7 Nights, Dec. 6, 2015 \$710pp
- Alaska Cruise, 7 Nights, June 7, 2016....\$1182pp

Valley West Travel
623-974-2929

NEW DIRECT LINE 623-266-6022

With over 25 Years of Travel Industry Experience
Please contact us for information on other Vacation & Cruise Specials

Bell Animal and Bird Hospital

4336 W. Bell Rd. suite #7 (43rd Ave. & Bell NW Corner)
Glendale, AZ 85308
602-978-4331

50% off Vaccines 15% off Services (in-house)
for COPMEA members

www.bellanimalhospital.com

COPMEA now sells "Old School" City Bird™ Caps.

Member Price:

\$16 each or 2 for \$30

Non-member Price:

\$20



*Fitted "FLEXFIT"
Caps*



CASH ONLY

COPMEA now sells

City of Phoenix pens

Member Price:

\$6 each or 2 for \$10

Non-member Price:

\$10



YOUR NEW LIFE BEGINS HERE



Why Rent When You Could Own?

With Little to No Money Down

You May Realize the Dream of Home Ownership!

Already Own? Consider a Refinance

Lower Your Rate | Pay Off Other Debt | Eliminate Mortgage Insurance

Complimentary Appraisal When You Close Your Home Loan with Academy*

Rafael Najera

Loan Officer

Academy Mortgage Corporation

C: (602) 561-7156

Rafael.Najera@Academy.cc

NMLS #256119 | State Lic LO-0912252 | CA-DOC 256119
Corp Lic #BK-0904081 | Corp NMLS #9113 | Corp Lic CA #4170013
Licensed by the Department of Business Oversight under the California Residential Mortgage Lending Act.



CONGRATULATIONS TO ACADEMY MORTGAGE!

Mortgage Executive Magazine ranks ACADEMY in the TOP 5 of the "50 BEST COMPANIES TO WORK FOR" based on total number of votes.

MAC0614-117773357

*Approximate \$400 value. Will be reimbursed upon successful close of escrow at Academy Branch 305. You must mention this ad on initial consultation for mortgage application. Offer Expires 12/31/2014 | 5304 E Southern Ave., Suite 101, Mesa, AZ 85206 | (480) 892-0000

Disneyland 60

RESORT

Diamond Celebration

60 Delightful Years of Disney Magic



© Disney

Experience it all with a multi-day ticket.



New Summer discount Single Day Ticket!

Available May 1 –August 31st 2015

Save \$35 off a single day ticket with a Second day free!

Second day Valid through December 25th 2015

To purchase your tickets

Visit or contact the COPMEA office

Returning this summer! Sea World's Summer Nights!

Guests can enjoy Turtle Reef, Manta[®] and all their favorite SeaWorld[®] attractions by day or stay late to take in *Summer Nights* (select dates May 23–Sept. 7), featuring nighttime animal shows, *Shamu's Celebration: Light Up The Night* and *Sea Lions Tonight* and, in the daytime, *Cirque de la Mer*.

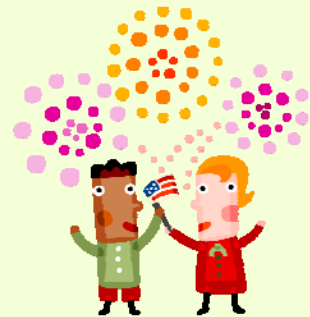


For more than 50 years — SeaWorld Cares[®]

COPMEA HAS DISCOUNTS - CHECK THEM OUT

The COPMEA Office has discounts available for MEMBERS ONLY and for many local and out of state amusement parks, plays, professional athletic games, and U.S. Airways Center events. All ticket prices are subject to change without notice. Trips outside of the U.S. require a passport.

LOCAL DISCOUNTS AVAILABLE	SOUTHERN CALIFORNIA TICKETS
<p><u>Movie Theatres</u></p> <p>Harkins \$6.50</p> <p>Harkins Special Engagement \$7.50</p> <p>AMC Gold \$8.00</p> <p><u>Enchanted Island at Encanto Park</u></p> <p>Unlimited Rides (reg. \$14.25) \$7.00</p> <p><u>Castles and Coasters</u></p> <p>Adult/Child</p> <p>Rides Only \$18.00</p> <p>Unlimited Rides And Golf (reg. \$30) \$22.50</p> <p><u>Arizona Science Center</u></p> <p>General Admission \$7.00</p> <p><u>Phoenix Zoo</u></p> <p>Adult (Reg. \$20) \$15.00</p> <p>Child 3-12 (reg. \$14) \$10.00</p> <p><u>Wildlife World Zoo & Aquarium</u></p> <p>Adults (reg. \$29) \$22.00</p> <p>Child 3-12 (reg. \$14.25) \$10.00</p> <p><u>Out of Africa</u> (reg. \$29.95/\$14.95)</p> <p>Adults \$24.95</p> <p>Child 3-12 \$10.95</p> <p><u>Desert Botanical Gardens</u></p> <p>Adults \$20.00</p> <p>Child 3-12 \$5.50</p> <p>Student \$12.00</p> <p><u>Arizona Sea Life Aquarium</u>, AZ Mills \$9.00</p> <p>Reg. Adult \$18.50 and Child \$10.50</p> <p>Summer Deal:</p> <p>Buy 3 get 1 free 8/9/15—9/3/15</p> <p><u>Butterfly Wonderland</u>, Scottsdale</p> <p>Adults 12+ (reg. \$19.95) \$16.95</p> <p>Child 3-11 (reg. \$10.95) \$8.95</p> <p>Children 2 years & under free</p> <p>(reg. \$16.95 for student, seniors, military)</p> <p><u>Golfland/Sunsplash</u> (reg. \$28.99) \$20.00</p> <p><u>Wet and Wild</u> \$29.00</p> <p>(cash, check, debit, credit w/\$5 fee)</p> <p>(reg. Adult 38.99/Child \$29.99)</p> <p><u>Big Surf</u> (reg. \$26.95) \$14.00</p> <p><u>See's Candies Certificate</u> (reg. \$17.50) \$15.20</p> <p><u>Honey Baked Ham Cert</u> (worth \$40) \$34.00</p>	<p><u>SeaWorld Two-Day</u> \$53.00</p> <p>Year Pass Adult/Child</p> <p>2-day ticket good until 12/2015</p> <p><u>Aquatica Water Park Splash Season Pass</u> \$38.00</p> <p><u>Universal Studios</u></p> <p>(must pay by credit/debit card)</p> <p>All Tickets Adult/Child</p> <p>3-Day Pass (reg. \$95) \$84.00</p> <p>Front of Line Tickets (reg. \$159) \$119.00</p> <p>Black out dates apply</p> <p><u>Six Flags Magic Mountain</u></p> <p>(must pay by credit/debit card + \$8.99 fee)</p> <p>All Tickets Adult/Child \$41.99</p> <p><u>Hurricane Harbor</u></p> <p>All Tickets Adult/Child (reg. \$37.99) \$25.99</p> <p><u>San Diego Zoo or Safari Park</u></p> <p>Adults (reg. \$44) \$40.75</p> <p>Child 3-11 (reg. \$34) \$32.25</p> <p><u>Legoland</u> (2 Day Ticket)</p> <p>Adult \$71.00</p> <p>Child 3-12 \$66.00</p> <p>(reg. \$78 Adult/\$68 Child)</p> <p><u>Legoland and Sea Life Aquarium Resort</u></p> <p>2-Day Hopper Ticket</p> <p>Adults \$76.00</p> <p>Child 3-12 \$71.00</p> <p>(reg. \$97 Adult/\$87 Child)</p> <p><u>Knott's Berry Farm</u></p> <p>(must pay by credit/debit card + \$8.99 fee)</p> <p>Adult (reg. \$57) \$35.00</p> <p>Child 3-12, Jr. Sr. (reg. \$28.99) \$29.00</p> <p><u>Knott's Soak City</u></p> <p>(must pay by credit/debit card + \$5.99 fee)</p> <p>Adult (reg. \$59) \$25.00</p> <p>Child 3-12 (reg. \$28.99) \$23.00</p> <p>(Save \$30)</p>



Disneyland

Tickets can only be purchased by credit cards with the member's name imprinted on card

Age:	Member:	Gate:	Effective March 4, 2015
Children (3 - 9)	\$163.40	\$172.00	2-Day (1-Park/1-Day) Ticket
Adult (10+)	\$175.75	\$185.00	2-Day (1-Park/1-Day) Ticket
Children (3-9)	\$201.40	\$212.00	2-Day Park Hopper Ticket
Adult (10+)	\$213.75	\$225.00	2-Day Park Hopper Ticket
Children (3-9)	\$201.60	\$224.00	3-Day (1-Park/1-Day) Ticket
Adult (10+)	\$211.50	\$235.00	3-Day (1-Park/1-Day) Ticket
Children (3-9)	\$237.60	\$264.00	3-Day Park Hopper Ticket
Adult (10+)	\$247.50	\$275.00	3-Day Park Hopper Ticket
Children (3-9)	\$220.50	\$245.00	4-Day (1-Park/1-Day) Ticket
Adult (10+)	\$234.00	\$260.00	4-Day (1-Park/1-Day) Ticket
Children (3-9)	\$256.50	\$285.00	4-Day Park Hopper Ticket
Adult (10+)	\$270.00	\$300.00	4-Day Park Hopper Ticket
Children (3-9)	\$233.10	\$259.00	5-Day (1-Park/1-Day) Ticket
Adult (10+)	\$247.50	\$275.00	5-Day (1-Park/1-Day) Ticket
Children (3-9)	\$269.10	\$299.00	5-Day Park Hopper Ticket
Adult (10+)	\$283.50	\$315.00	5-Day Park Hopper Ticket
Deluxe	\$521.55	\$549.00	Annual Passport (3 & Over)
Premium	\$740.05	\$779.00	Annual Passport (3 & Over)
Children (3-9)	\$261.90	\$291.00	SoCal City Pass Ticket
Adult (10+)	\$300.60	\$334.00	Valid: 1/1/2015 - 6/2/2015

GERONIMO'S REMEDIES



Nature's Pain Reliever
A Legend in Healing Eucalyptus Oil and Balm
\$15.00

ON SALE AT COPMEA OFFICE

Busch Entertainment Corporation

Discounts available for Adventure Island Tampa, Busch Garden Tampa, Sesame Place, SeaWorld Orlando, SeaWorld San Antonio, SeaWorld Orlando & Aquatica, Busch Gardens Williamsburg, and Water Country USA

**Got a Pet?
Save at the vet!**

**United Pet Care
BETTER than pet insurance!**



- Join regardless of pet's age or medical conditions
- Save a minimum of 20% on every visit
- No deductibles or claim forms
- Affordable at less than \$13/month

For more info, or to sign up:

602-266-5363
Toll Free 1-877-872-8800
www.unitedpetcare.com



**CENTRAL
PHOENIX
ANIMAL
HOSPITAL**



ALICIA RUIZ, DVM

Medicine, Radiology and Surgery
Dogs, Cats, Ferrets & Rabbits

- * EARLY MORNING DROP OFF
- * PROFESSIONAL QUALITY PET CARE
- * QUALITY PET CARE PRODUCTS AND PET FOODS
- * ACCEPTS UNITED PET CARE INSURANCE
- * 10% DISCOUNT ON SERVICES FOR COPMEA MEMBERS

25 WEST THOMAS

(S.W. Corner of First Avenue & Thomas)

PHONE: (602) 277-5155

M-T-TH-F: 7:30 AM-5:30 PM W-Sat: 8:00 AM - Noon

Serving the Great State of Arizona for Over 32 Years

GONZALES
HEATING & COOLING

1547 West Grand Avenue • Phoenix, AZ 85007

(602) 253-2977

Installation and Repair of:
AC & Heat Pump
Evaporative Coolers
Gas & Electric Heating
Water Heaters

20% off
All Services

COPMEA Member Special

10% off
All Installations

Financing Available
90 Days Same as Cash

Se Habla Español

R.O.C. C39R #52793
L39 #075927

Majerle's Sports Grill

15% OFF

to all COPMEA members when members present their card

This discount will work at all 5 of locations

www.majerles.com

Valid at all five locations: Downtown Phoenix, Chandler Fashion Center Mall, in Goodyear at McDowell & Dysart, "Old Town" Scottsdale and newest location in Flagstaff on Route '66'.

COPMEA CLASSIFIEDS

Greenwood Memory Lawn Cemetery
Burial Plot: 2300 West Van Buren Street, Phoenix, Arizona 85009
Double depth burial plot for sale in historic section. \$3,000. Will pay title transfer fee. Call or text Brandi 623-363-2521

Greenwood Memory Lawn Cemetery
Burial Plot: 2300 West Van Buren Street, Phoenix, Arizona 85009
\$2,000. The plot is currently in the Veteran's section however can be moved any where in the cemetery. The minimum rate for a plot is \$2,595 and goes up to \$4,295. The veteran section starts at \$2,395. Please call Christina Perez at 623-225-6074 if you are interested. We will pay the title transfer fee. Cash or money order only.

Looking for individuals that would like to work part time. We have positions open for wheelchair agents and security screeners. Please call Complete Skycap Services at 602-267-0294.

FOR RENT: 1 Bedroom Apt. A/C, water included, swimming pool, security lighting, covered parking, laundry facilities on premises, No Pets, \$475.00 per month. \$100.00 deposit required.

FOR RENT: Studio apartment with separated bedroom, utilities included, small kitchen, A/C, swimming pool, security lighting, covered parking, laundry facilities on premises. No Pets. \$500.00 per month, \$100.00 deposit required.

Both apartments are located in the 27th Ave. & Bethany Home Road Vicinity.

Interested parties call 602-433-1809.

FOR SALE: 2008 Toyota Highlander, 3.5L V6, 5 speed auto, AWD, 7 passenger, tires purchased in 2014, dealer serviced, Blizzard Pearl White color, 103,000 miles. Asking \$15,900. Call or text Jeff at 602-793-0865.



COPMEA members can advertise in the classifieds for free. Send your ads, complete with contact information and details on items for sale or rent, to the COPMEA office.



SHOP PHOENIX

KEEP OUR TAX DOLLARS HERE!

Coffee Shop

Ultratainment Certificates Offer 20% Savings

We now carry Ultratainment Certificates accepted at over 500 locations. Designed to save you time and money. Check out their website at www.Ultratrain.com for participating vendors.

You can purchase your certificates at the COPMEA office for \$8 but are worth \$10 for a **20% savings** when you use them

Important

Be sure to present your COPMEA membership card at the COPMEA office and at COPMEA events

If you are receiving more than one COPMEA Municipal per residence, please call the COPMEA Office at 602-262-6857 to eliminate duplication

If you want to go **“green”** and do not want the COPMEA Municipal sent to your residence, please call the COPMEA Office to discontinue the mailing

Members are encouraged to send in personal e-mail addresses for inclusion in the electronic mailing list to

communications@copmea.com. The COPMEA Office sends out Municipals, fliers, membership meeting information, updates on upcoming events, special engagements, and discounts. Your personal information is always kept confidential and is never released for marketing or any other purposes



COPMEA MUNICIPALS (USPS 922-880) is published monthly for \$6 per year by the City of Phoenix Municipal Employees Association, 135 North 2nd Avenue, Suite B-5, Phoenix, AZ 85003-2013.

**COPMEA Newsletter
Office Hours**

Monday: 1 p.m. to 5 p.m.
Tuesday-Friday: 8 a.m. to 5 p.m.

E-Mail Address

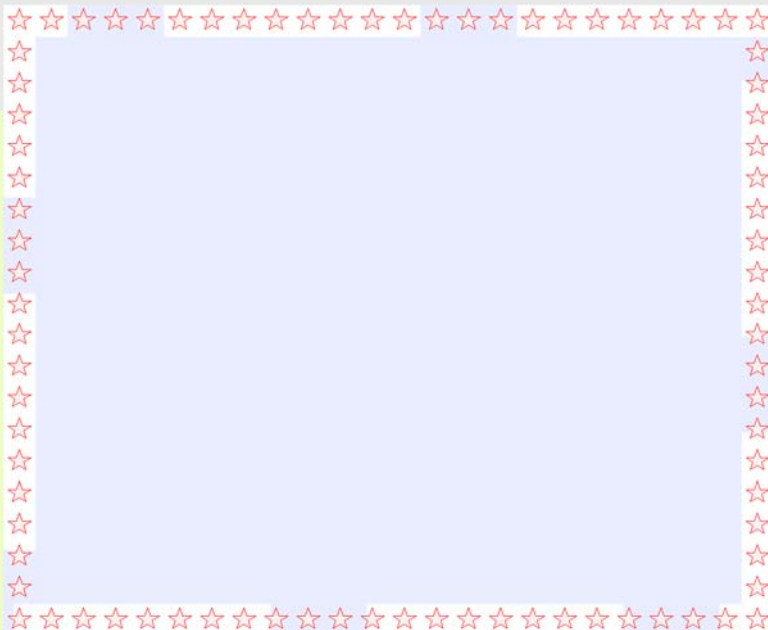
communications@copmea.com
chris.goldberg@copmea.com
barbara.shrum@copmea.com

Web Site

COPMEA.COM

Telephone: 602-262-6857

Fax: 602-534-1964



POSTMASTER

Send address corrections to
COPMEA
Periodicals Postage Paid

DISCLAIMER: ACCEPTANCE OF ADVERTISING IN MUNICIPALS DOES NOT CONSTITUTE AN ENDORSEMENT BY COPMEA OF THE GOODS OR SERVICES OFFERED

COPMEA OFFICE INFORMATION

- ⇒ Transactions are cash, check, credit, or debit
- ⇒ Disneyland, Knott's Berry, Six Flags, and Universal require purchase by credit/debit card
- ⇒ Knott's Berry charges a processing fee of \$5.99
- ⇒ Six Flags charges a processing fee of \$8.99
- ⇒ No charge for Disneyland or Universal.
- ⇒ \$50 fee charged for all returned checks
- ⇒ Have your COPMEA cards ready when making purchases
- ⇒ Tickets for monthly events are restricted to your membership
- ⇒ Take your old membership card to the COPMEA Office for replacement if your social security number appears on the card
- ⇒ Report any membership and address changes to the COPMEA Office



MONTHLY MEMBERSHIP

- \$4 single monthly membership dues
- \$8 family monthly membership dues
- Monthly payroll deductions for fulltime and temporary city employees.

ASSOCIATE ANNUAL MEMBERSHIP

- \$48 single annual membership dues
- \$96 family annual membership dues
- Non-city employees and city of Phoenix retirees may join COPMEA. Dues are paid in full for the year at the time of joining then annually thereafter. Another option is monthly payroll deductions from a city of Phoenix employee family member.

Membership rules:

- ⇒ You must be a member to purchase tickets or participate in COPMEA functions
- ⇒ Tickets and event passes purchased by COPMEA members are for the sole use of the card holder
- ⇒ Tickets and event passes cannot be purchased for anyone outside of the COPMEA membership
- ⇒ You must present your COPMEA Card and a valid ID at the time of purchase