

MORE TRANSFORMATION PRACTICE

For problems 10 – 14, given the parent function and a description of the transformation, write the equation of the transformed function, $f(x)$.

10. Absolute value—vertical shift down 5, horizontal shift right 3. _____

11. cubic vertical shift up 5. _____

12. Square Root —vertical shift down 2, horizontal shift left 7. _____

13. Quadratic— horizontal shift left 8. _____

14. cube root-vertex at $(-5, -2)$. _____

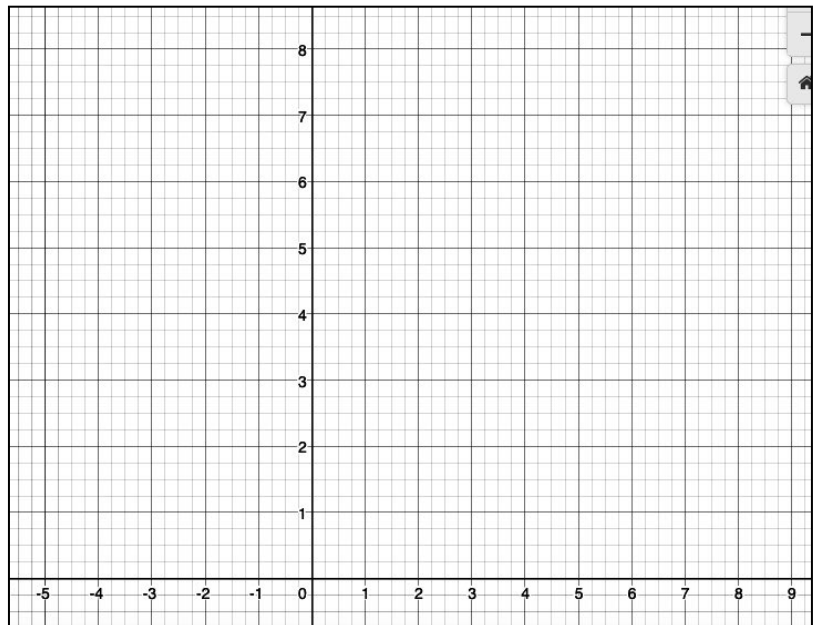
For the problems below, state what parent function it is built from, state transformations that are taking place, sketch each step in **different colors** and check your final solutions on a graphing calculator.

$$f(x) = \sqrt{-2x + 4}$$

Parent Function:

Parent with multiplier and what it means:

Parent with multiplier and shifts and what it means:

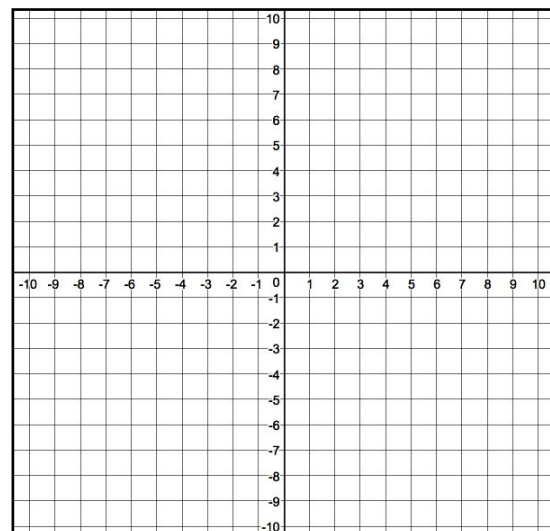


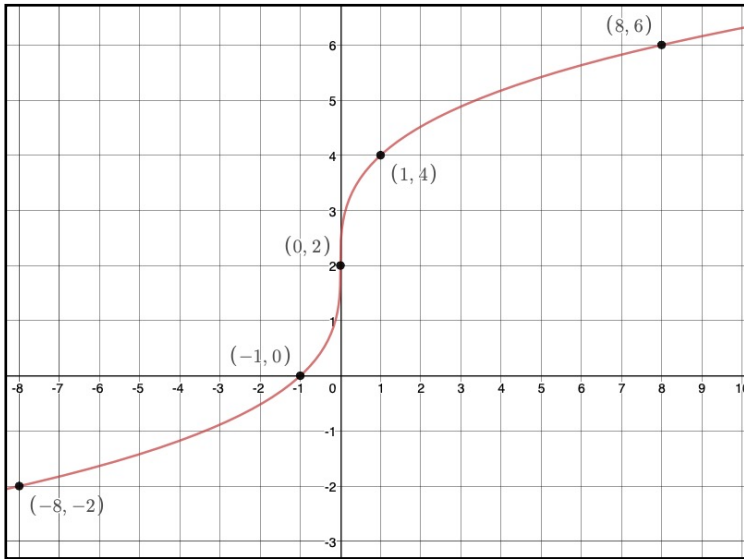
$$f(x) = -\left|\frac{1}{3}x\right| - 4$$

Parent Function:

Parent with multiplier and what it means:

Parent with multiplier and shifts and what it means:

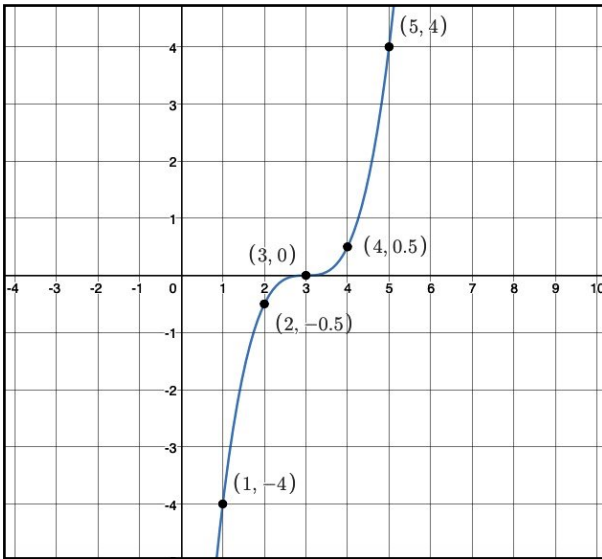




Parent Function:

Parent with multiplier and what it means:

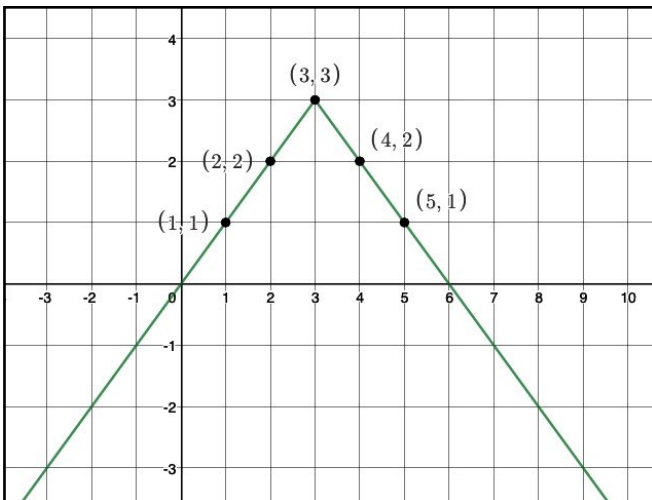
Parent with multiplier and shifts and what it means:



Parent Function:

Parent with multiplier and what it means:

Parent with multiplier and shifts and what it means:



Parent Function:

Parent with multiplier and what it means:

Parent with multiplier and shifts and what it means: