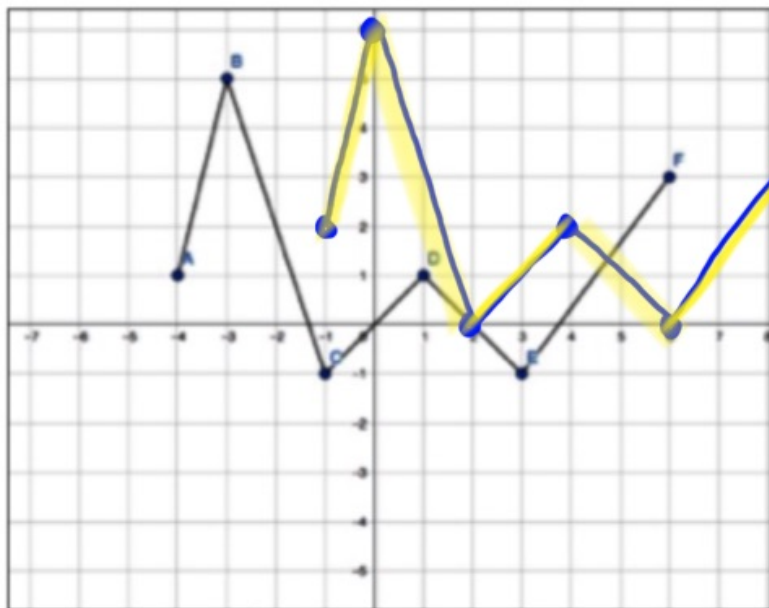
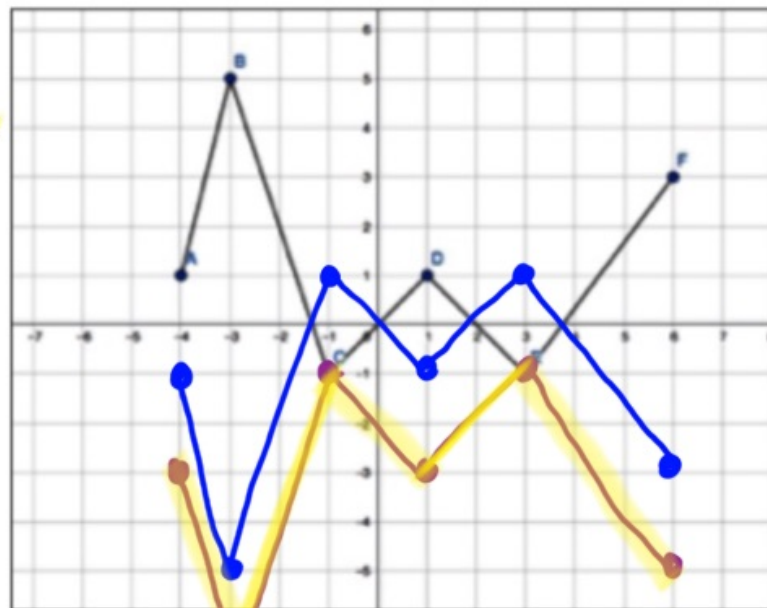


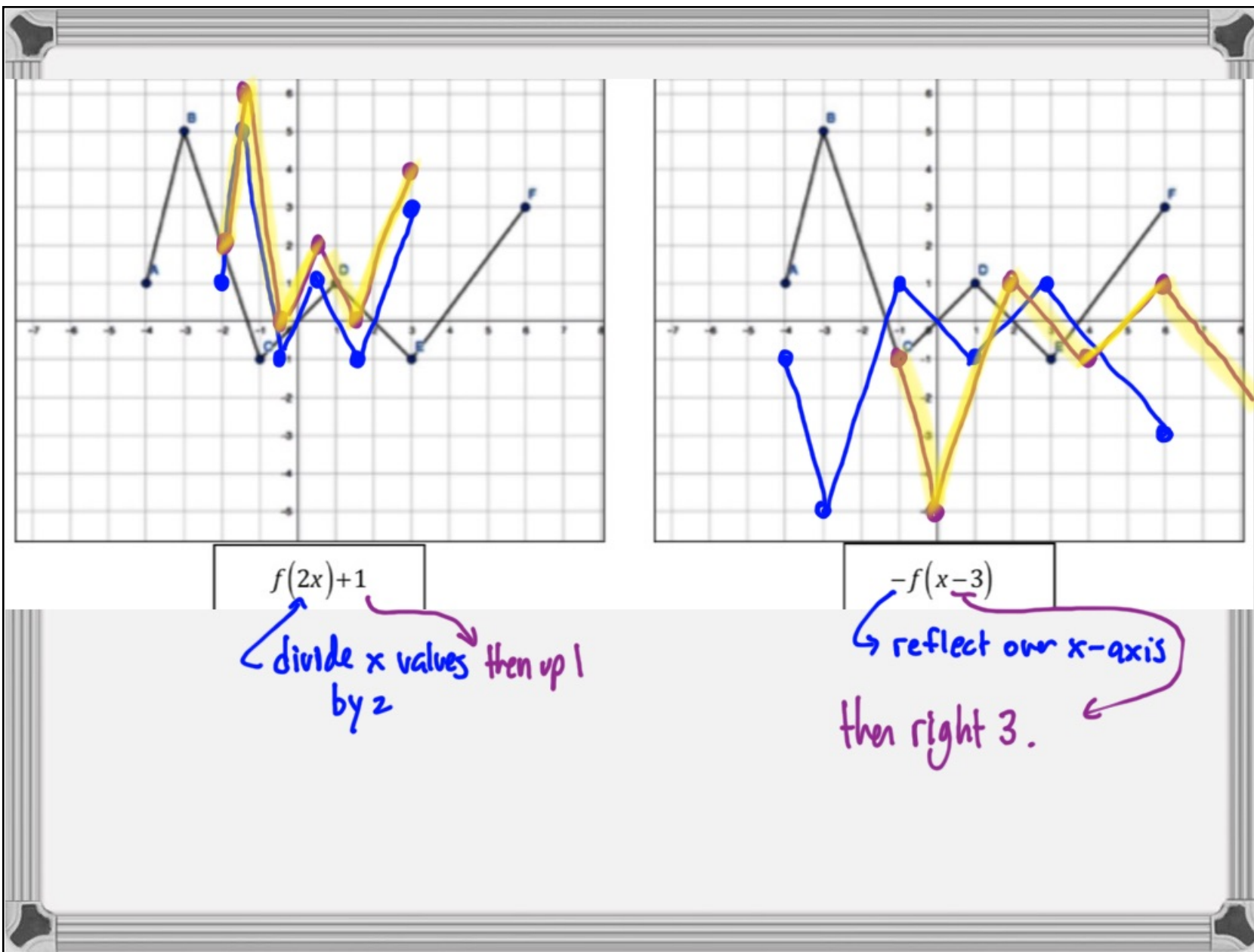
Given the original graphs of $f(x)$ below, perform the transformations in a DIFFERENT COLOR

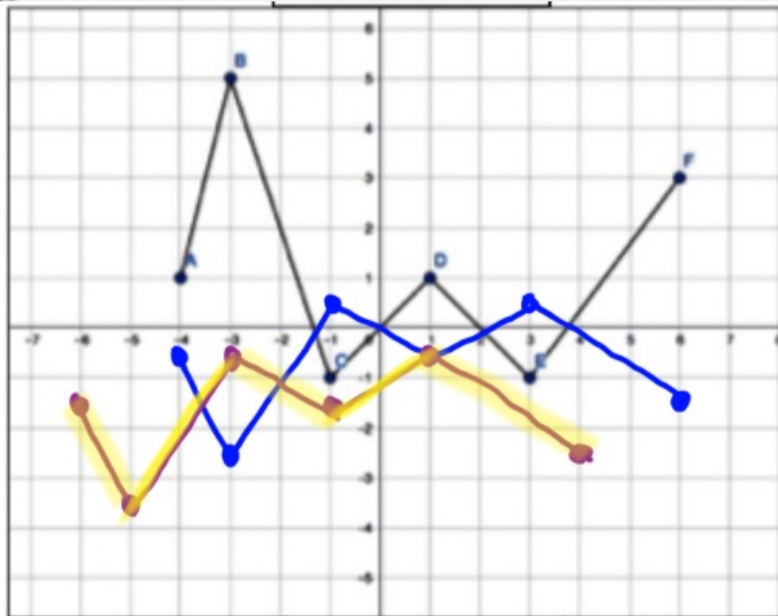


$f(x-3)+1$ \uparrow up 1
 \rightarrow right 3



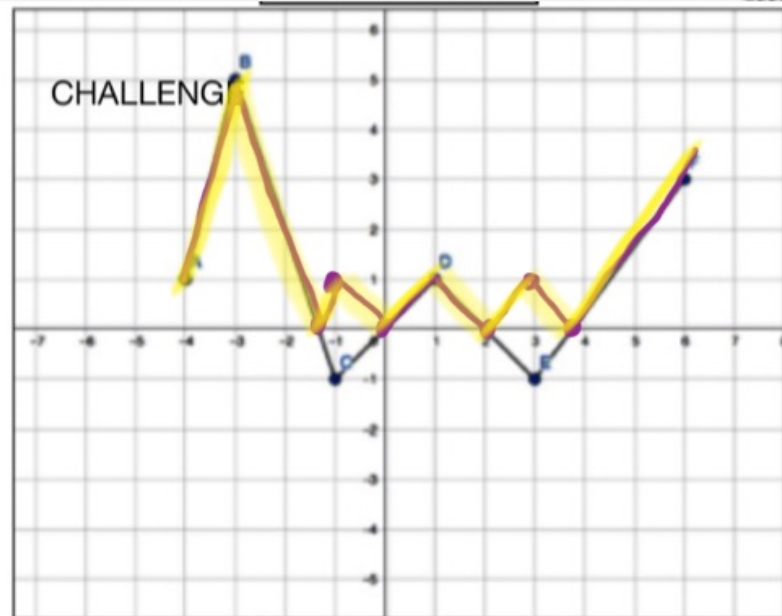
$-f(x)-2$
 \uparrow reflect x-axis then down 2.





$$-\frac{1}{2}f(x+2)-1$$

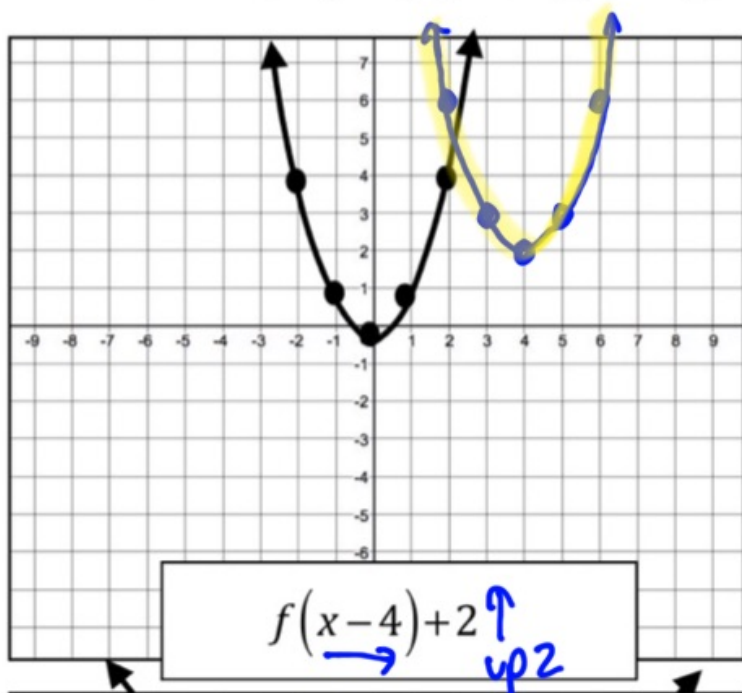
↳ mult y-values by $-\frac{1}{2}$
 left + 2 and down 1



$$|f(x)|$$

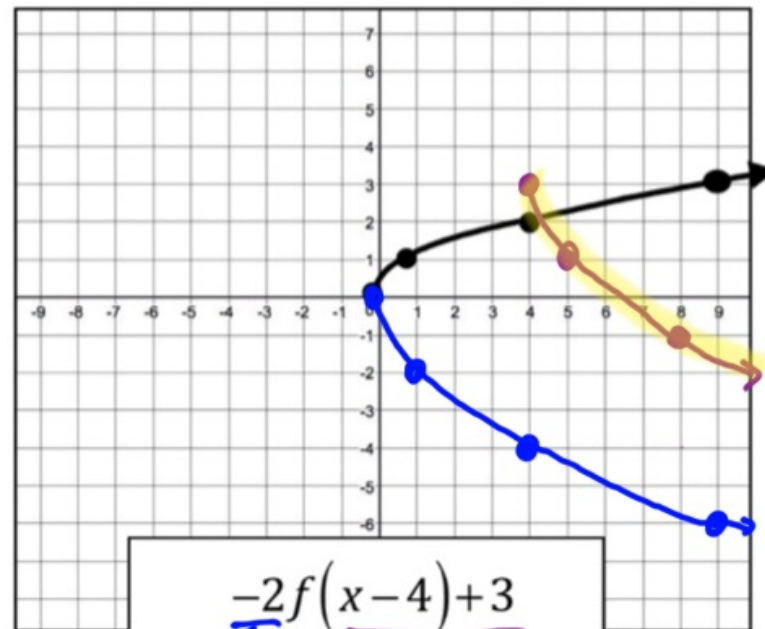
only negative "y" values are reflected over the x-axis.

Given the original graphs of $f(x)$ below, perform the transformations in a DIFFERENT COLOR



$$f(x-4) + 2$$

→ right 4 ↑ up 2



$$-2f(x-4) + 3$$

↪ mult y values by -2

then right 4 and up 3. ↪

