



STRONG ROOM DOOR

Banks and businesses are always under the scanner of unscrupulous eyes, raising a threat to the security. Break in attempts have become sophisticated with burglars who use advanced tools for their heists. Needless to say, the first step is to fortify the first point of attack, hence, the Strong Room Door is a must for every bank.



Unique Torch & Tools Resistance



Unique Two Step Door Construction



Double Duty Barrier



Automatic Relocking Device



Establishments like banks and businesses are always under the scanner of unscrupulous eyes, raising an ever-increasing threat to their security. As technology evolves, break-in attempts are also getting more sophisticated with burglars using advanced state-of-the-art tools to attempt their brazen heists. Needless to say, the first step is to fortify the first point of attack - the strong room door.

Godrej Strong Room Doors combine unique Double Duty Barrier (DDB) material and Torch & Drill (TDR) Matrix to offer superior resistance, not only against common hand tools, picking tools and impact tools, but also against oxy acetylene torches.

Strong Door Class I

Consists of a composite slab of thickness 18mm, made of a special layer of flame and arc-resistant alloy that protects against fire, power drilling, oxy acetylene torch and arc cutting. It is further fortified with a composite 62mm layer of Godrej Double Duty Barrier (DDB).

Strong Room Door Class II

Consists of a 25mm slab of Torch and Drill Matrix Slab (TDR), to protect it from attacks by impact tools, drills oxy acetylene torch and arc cutting. It is further fortified with a 65mm layer of Godrej Duty Barrier ((DDB). Door comes along with clenching mechanism.

Features

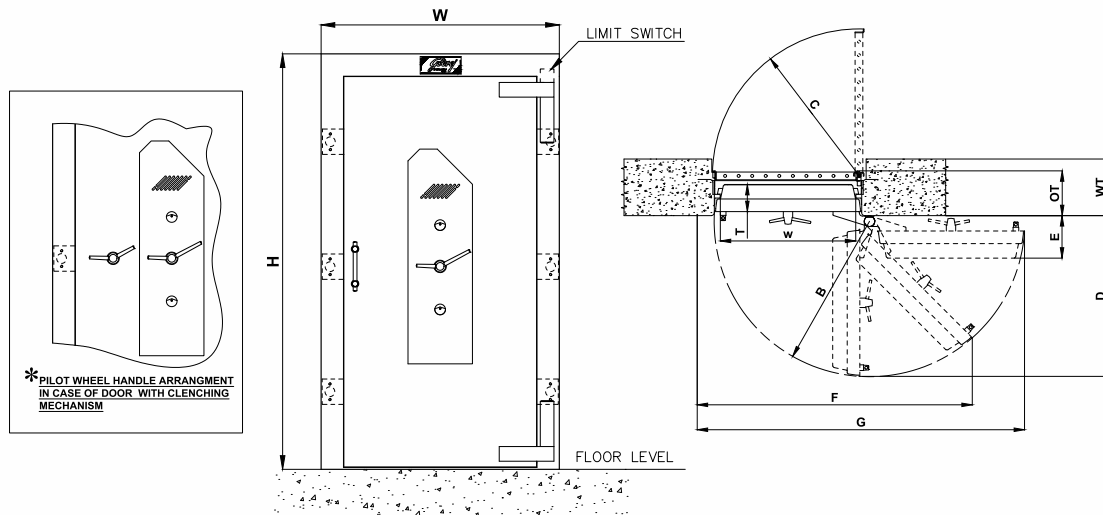
- Superior quality 10 mm thick MS plate in a one piece bent angle door frame
 - A unique two step door construction
 - Godrej Double Duty barrier material provides reliable protection against fire
 - 12 shooting bolts, each of 38mm diameter are provided in front and rear to secure the door
 - Balanced pressure bolt to protect against dislodging attempts by creating equal neutralizing pressure from within
 - Impact resisting shaft for handle which defeats attempts to hammer it in
 - Locks and re-locking devices are protected by specially designed drill-defeat shield
 - Automatic re-locking device deadlocks the door in case of explosives or mechanical attacks
 - Additional re-locking device on primary lock for extra protection
 - Grill gate is secured with high-precision 8-lever lock, and opens on both sides
 - Fitted with two dual control high-precision 8-lever locks from Godrej*
 - A relay micro switch is provided inside to control the lighting inside the vault room
 - Tested as per BIS standard IS 11188:2014
- *Locking Mechanisms are also available in (a) Combination Lock (b) Electronic Lock © Biometric Lock (d) Time Lock

Classification	TRTL (Torch & Tool Resistant)	Godrej & Boyce Equivalent
Class C	TRTL 15, FR 30	CL. I Defender Plus
Class B	TRTL 30, FR 30	CL. II Defender Plus

*All dimensions are in mm and Tolerance - dimensions $\pm 5\%$

Specification	Nomenclature	CLASS-C	CLASS-B	CLASS-B(BIS)
		Without Clenching		With Clenching
Overall size (mm)	HxW	2128x1220	2128x1220	2128x1250
Clear opening (mm)	hwx	1953x910	1953x910	1953x910
Thickness of door with lockcase (mm)	T	162	182	182
Overall door thickness including frame and grill gate (mm)	OT	300	300	300
Recommended for wall thickness (mm)	WT	305-380	305-380	305-380
Door swing (mm)	B	1060	1060	1060
Grille gate swing (mm)	C	985	985	985
Projection of door when opened at 90° (mm)	D	1080	1080	1080
Projection of door when opened at 180° (mm)	E	265	285	265
Overall width of door and frame for max clear opening (mm)	F	1850	1850	1865
Overall width of door and frame when fully opened (mm)	G	2205	2205	2220
Weight (kg)		860	920	965

*All dimensions are in mm and Tolerance - dimensions \pm 5%



Godrej | SECURITY SOLUTIONS

Godrej Security Solutions, Regd. Office: Plant no. 17, Pirojshanagar, Vikhroli, Mumbai - 400079
Toll Free No.: 1800 209 9955 (Sales / Service) | Email: secure@godrej.com (Sales), secare@godrej.com (Service)
Website: www.godrejsecure.com | Follow us: www.facebook.com/GodrejSecure | www.twitter.com/godrejsecure

This product is designed and manufactured with recyclable material. At end of life of this product, you may recycle all the components. Alternatively, you may seek guidance for disposal at 1800 209 5511

The content and information on the catalogue is for general purpose and is provided on 'as is' basis. The recommendations of level of strength are relative and completely depend on the nature of tools used for any attack. All safes can be broken open given sufficient time, tools, torch (basic or simple home tools), expert skill and access. All warranties, recommendations and representations of any kind mentioned herein are disclaimed, including the implied warranties of merchant ability and fitness for a particular use. The company disclaims any claims, losses, demands, or damages of any kind whatsoever arising out of or resulting by reason or in consequence of any illegal breaking open of Safes, Alarm Systems or any theft, fire, robbery, fraud or other wrongful act done by any third party with regard to Safes, Alarm Systems including but not limited to direct, indirect, incidental or consequential loss or damages, compensatory damages, injury, economic loss, or otherwise resulting from theft, fire, robbery, fraud or other wrongful act done by any third party. The specifications, prices and features of the products may be changed at the sole discretion of the company without any prior notice.

Limited products are shown here due to space limitations. Please contact the dealer to know more.

ISO 9001:2015 / ISO 14001:2015 / BS OHSAS 18001:2015

GSS/B2B/IMC/STRONG ROOM DOOR LEAFLET/JUNE-2020/V1