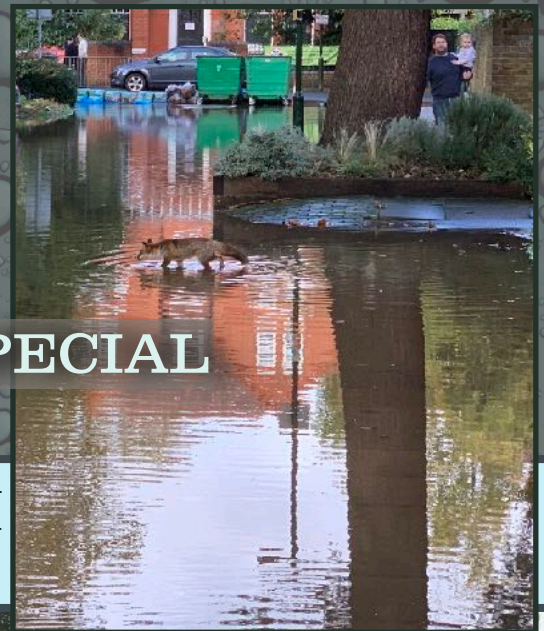




## WINTER-WATERLAND SPECIAL



Plenty has happened in TW14T\* since our last newsletter - From summer parties to carpark rebuilding, lots of tree surgery and replanting, another major film shoot, then... of course; **THE GREAT FLOOD!**



Almost from the moment the 12" pipe under Waldegrave Road ruptured and water began pouring down the gutter into Fieldend, residents began to rally round, keeping each other informed, moving vulnerable cars, getting wet feet and having fun building dams. It was very fortunate that no houses were damaged however quite a few garages and one car took a soaking. Fingers crossed all those unlucky enough to be affected will be adequately compensated by Thames Waters' insurers.

Following this close shave with catastrophe FRAL is pushing the council to improve our perimeter road storm drain efficiency and looking into keeping a supply of sand and sand bags at the ready to cope with any future unscheduled H2O incursions

### FLAT ROOF MAINTENANCE PLAN

As many can bitterly attest, its the water that falls on our roofs that can be the greatest source of stress and potential damage to our homes.

Not only are the roof drains small and prone to blockage by leaves and mulch, this water collects and drains out through a pipe installed in only about every third house, meaning the burden of risk and maintenance is unfairly distributed.

Until now roof and drain clearing has been the individual owners' responsibility. However, following numerous requests for help and the potential for economy of scale, the board has decided to take action and is seeking quotes from roof maintenance companies to undertake a bi-annual programme to try and ensure better drainage. Its hoped this new service can be included in your regular maintenance fee.

There will be further news on this proposal in the New Year.

### NEW GRAVEL PARKING BAYS BRING DRAIN GAIN

Following last year's entrance road garage forecourt re-surfacing, careful budgeting allowed for a second big upgrade to be accomplished this year, and not a moment too soon!

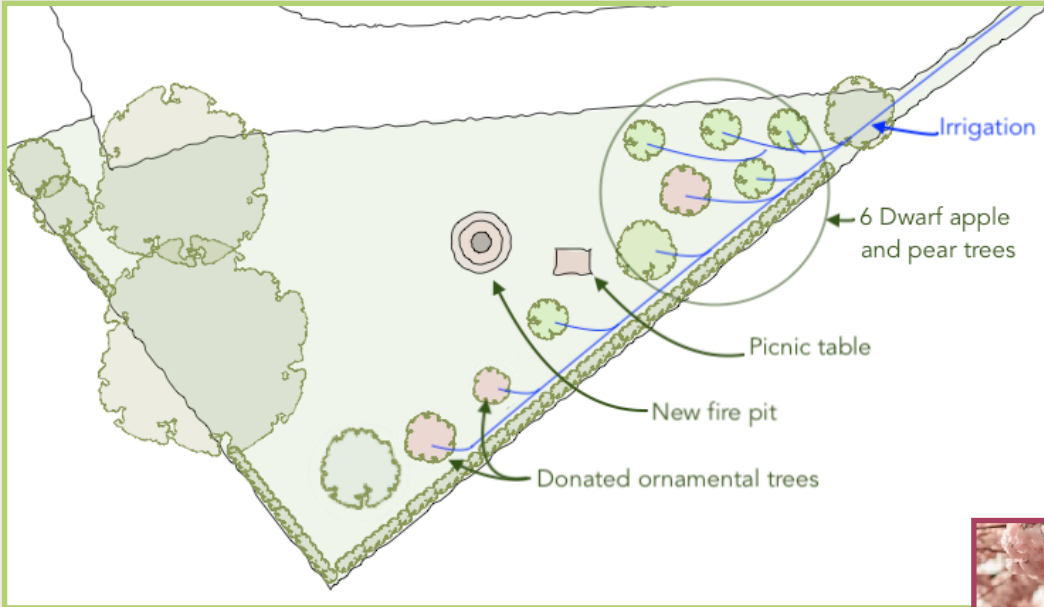


Not only are these new spaces a little wider to help reduce door bumping but also the mesh-gravel combo is completely porous allowing for much better water drainage. The recent flood saw large amounts of water draining away through the gravel as it over ran the car park's gutters.

Similar free-draining bays elsewhere may be the way forward!

## TRIANGLE ORCHARD MEADOW PROJECT

Apart from the annual pyrotechnics of bonfire night, our Triangle Corner is a little used and slightly unloved space. The new hedge planting project has got us started with re-greening the edges however it's growing new trees that has proved the greatest challenge. Despite several attempts, keeping immature trees alive here has been more or less impossible. Recent dry summers combined with the poor soil that sits on top of building rubble make things tough for young roots. However, this is a sunny, sheltered space and is potentially perfect for fruit trees, so... the FRAL board has hatched a plan to give the space a new lease of life! Using funds raised by September's film shoot we will create a much more inviting orchard meadow and picnic area for everyone to use.



To thrive, these young trees will need to be planted in deep pockets of fertile soil and be surrounded by beds of flowering plants to help with pollination.

Most of all, a reliable source of water delivered to each tree via irrigation.

The bonfire circle will be moved to be slightly more central and given an ornamental makeover.

Hopefully there will be enough budget leftover to provide a picnic table and chairs.

We would also like to plant 2 or 3 other blossoming fruit trees such as cherry, so if any one has a small tree they would like to donate please contact gardening ace Sally Stones.

Bring on spring!!



## TRY DOING IT IN THE MORNING!!

*IF YOU DON'T ALREADY - PLEASE TRY TO PUT YOUR RECYCLING OUT ON THE SAME DAY AS COLLECTION*



Putting food composting bins, unwashed plastics and take away wrappers out the night before collection gives our local foxes lots of time to get stuck in and make a mess. The result is often a lot of plastic litter spoiling our usually very clean environment.

Of course its not always possible, but as the councils trucks now tend to arrive well after 9am on Fridays, there is usually plenty of time to - do it in the morning!

## YOUR FRAL BOARD

Chair & Maintenance: Theo Williams  
Treasurer: Colin Hatton-Smith  
Company Secretary: Patsy North  
Minutes Secretary: Elizabeth Blunt  
Gardens & Trees: Sally Stones  
Planning & EVs: Tim Bystedt  
Conservation: Zoe Fudge

CONTACT US AT:  
[fralbusiness@outlook.com](mailto:fralbusiness@outlook.com)