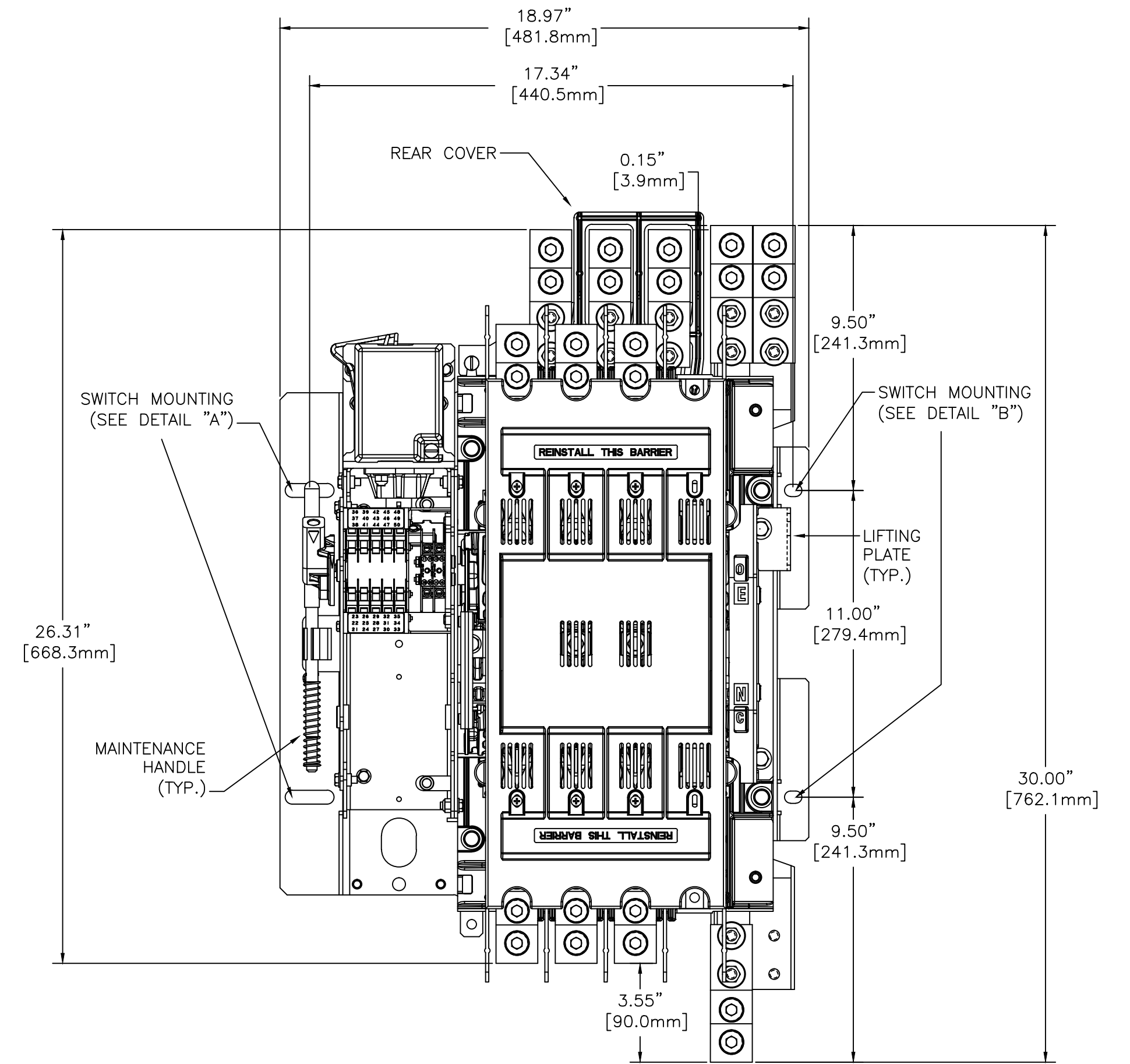
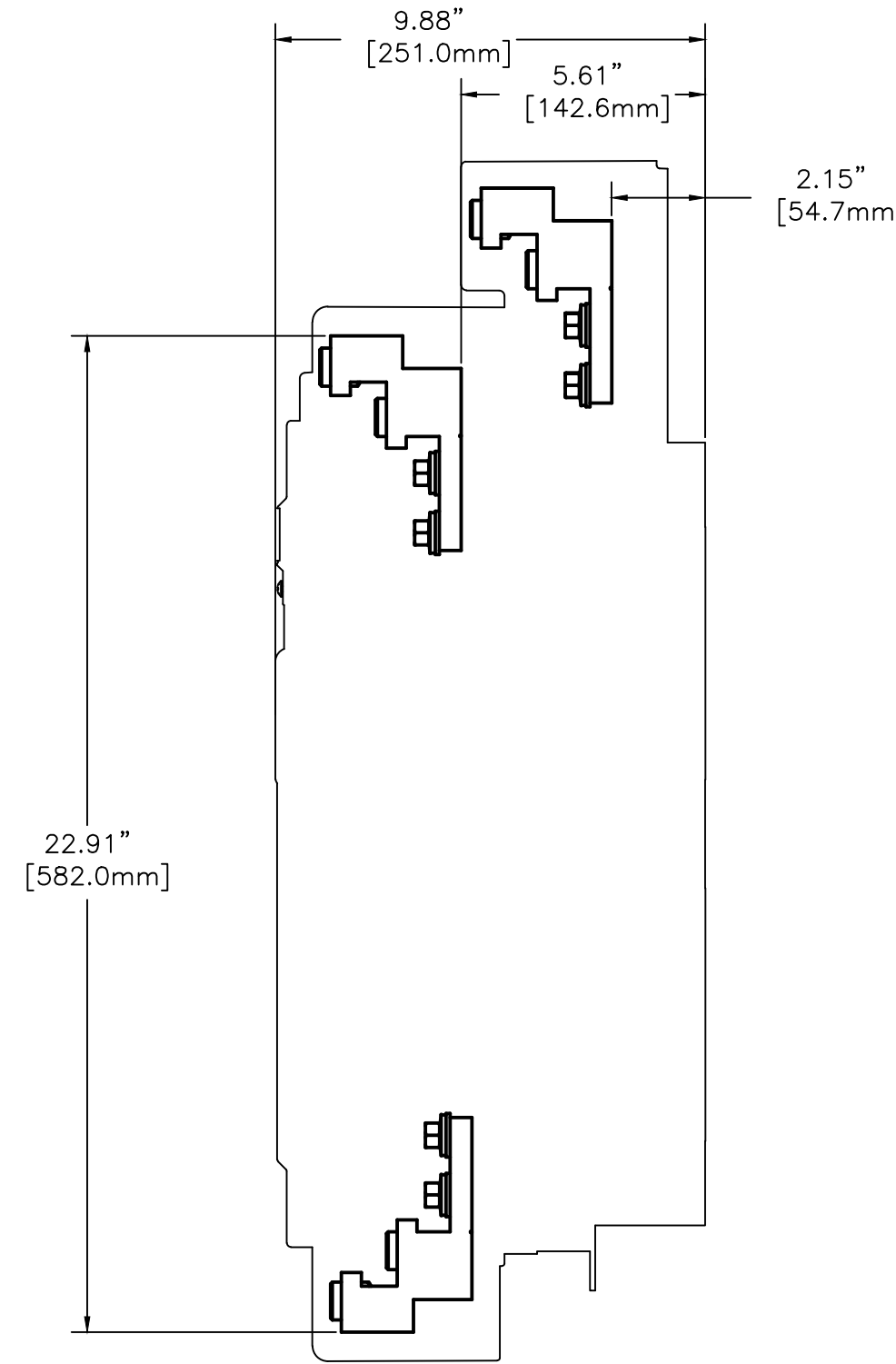
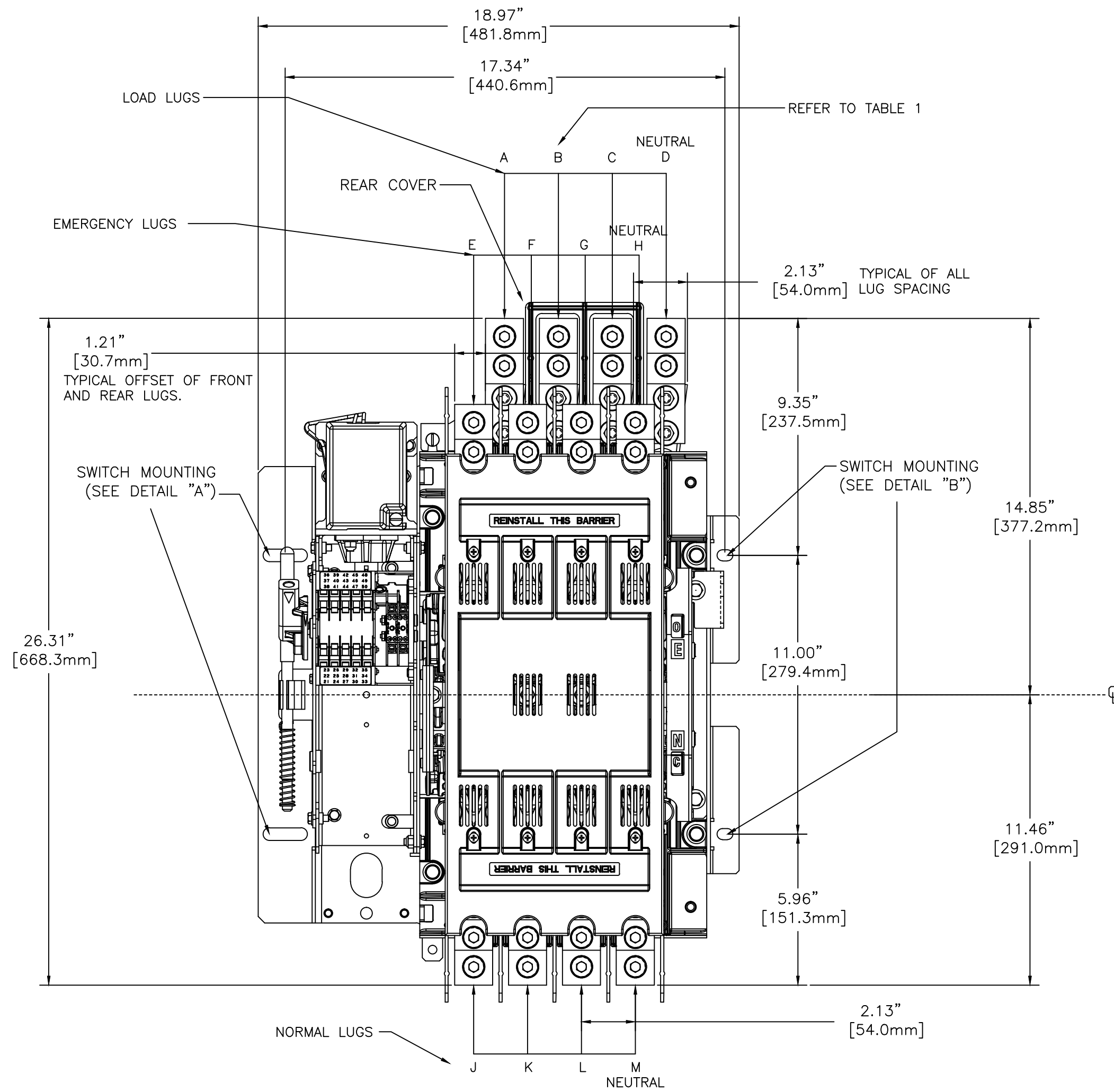


OUTLINE FOR ASCO® 300 SERIES 600 AMPERE "J" FRAME (J3ATS,J3NTS,J3ADTS,J3NDTS) FRONT CONNECTED TRANSFER SWITCHES OPEN TYPE

FRONT VIEW

SIDE VIEW

FRONT VIEW



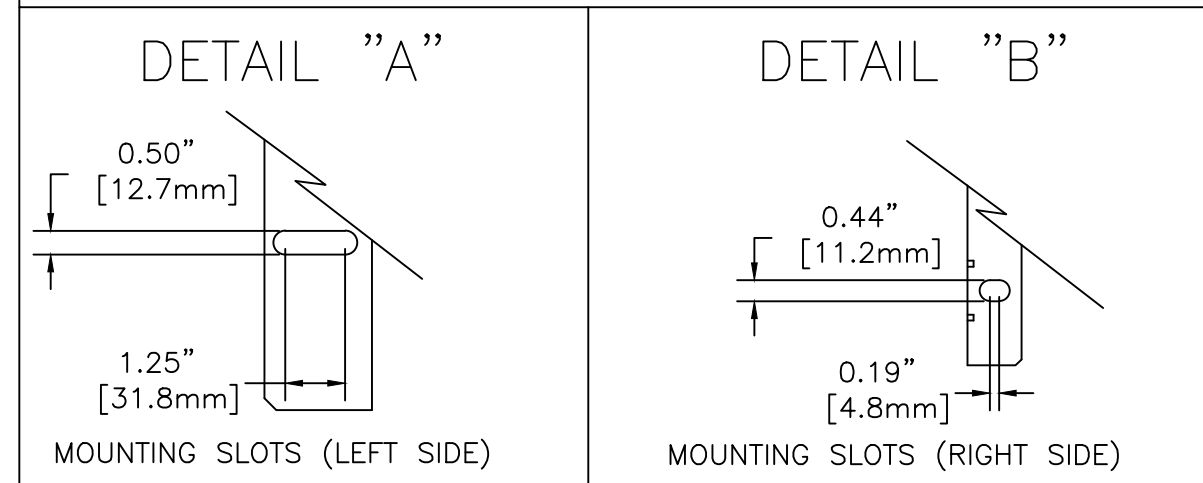
600 AMP ATS/NTS W/ SWITCHING NEUTRAL

600 AMP ATS/NTS W/ SOLID NEUTRAL

TABLE 1: POLE LOCATIONS

POLES	A	B	C	D	E	F	G	H	J	K	L	M
2	LL1		LL2	LL0	EL1		EL2	ELO	NL1		NL2	NL0
3	LA	LB	LC	LN	EA	EB	EC	EN	NA	NB	NC	NN

SWITCH MOUNTING DETAIL



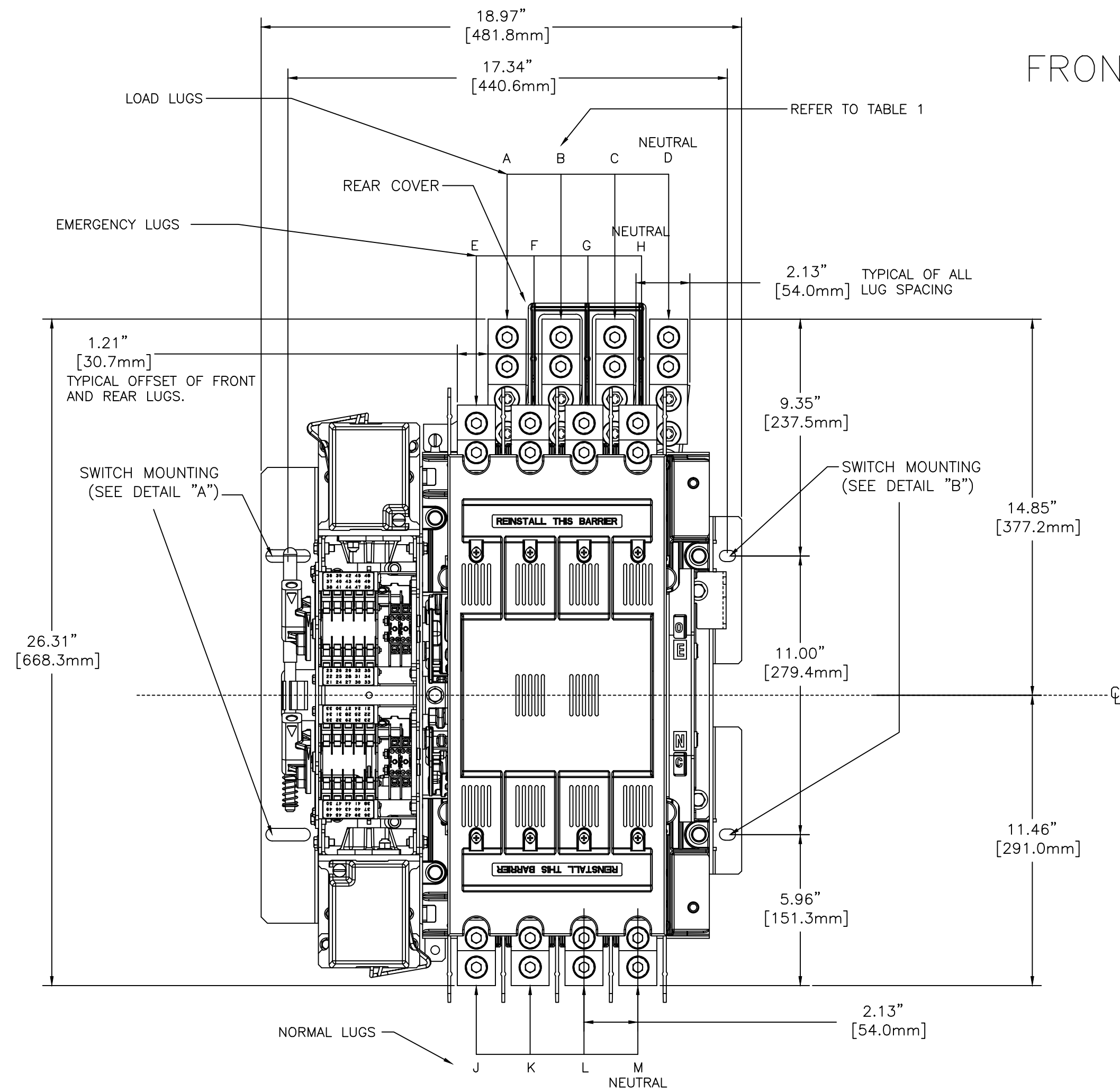
600A UNITS APPROXIMATE SHIPPING WEIGHT, LBS (KG)

SWITCH TYPE	POLES	WEIGHTS LB (KG)
ATS / NTS	2	73 (33)
ATS / NTS	3	80 (36)
ATS / NTS	4	87 (39)
ADTS / NDTs	2	89 (40)
ADTS / NDTs	3	96 (44)
ADTS / NDTs	4	103 (47)

PROJECT NAME:		245710	BWM	BK	12/13
REV. TO SHEET	ISSUE	ECN NO.	BY	APP.	DATE
COMPOSITE OUTLINE					
300 SERIES					
600A OPEN TYPE					
BY	DATE	MANUFACTURING TOLERANCES TO BE IN ACCORDANCE WITH ASCO PROCEDURE MP-1-003. FOR PLASTIC PARTS SEE MP-1-005.		ASSEM. REF. NO.	COMPUTER GENERATED DRAWING
DRAWN BY	BWM	12/13	PROPERTY OF ASCO POWER TECHNOLOGIES. USE PERMITTED FOR OUR WORK ONLY. ALL RIGHTS OF DESIGN OR INVENTION ARE RESERVED.		SCALE 1/4" = 1" SIZE DS
CHECKED	BK	12/13	ASCO® ASCO POWER TECHNOLOGIES, L.P. FLORHAM PARK, NEW JERSEY 07932 U.S.A.		DWG. NO. 1001393-005
PROJECT APPROVAL	BK	12/13	DRAWING - REV. NO. 245710		SHEET 1 OF 3
FINAL APPROVAL					

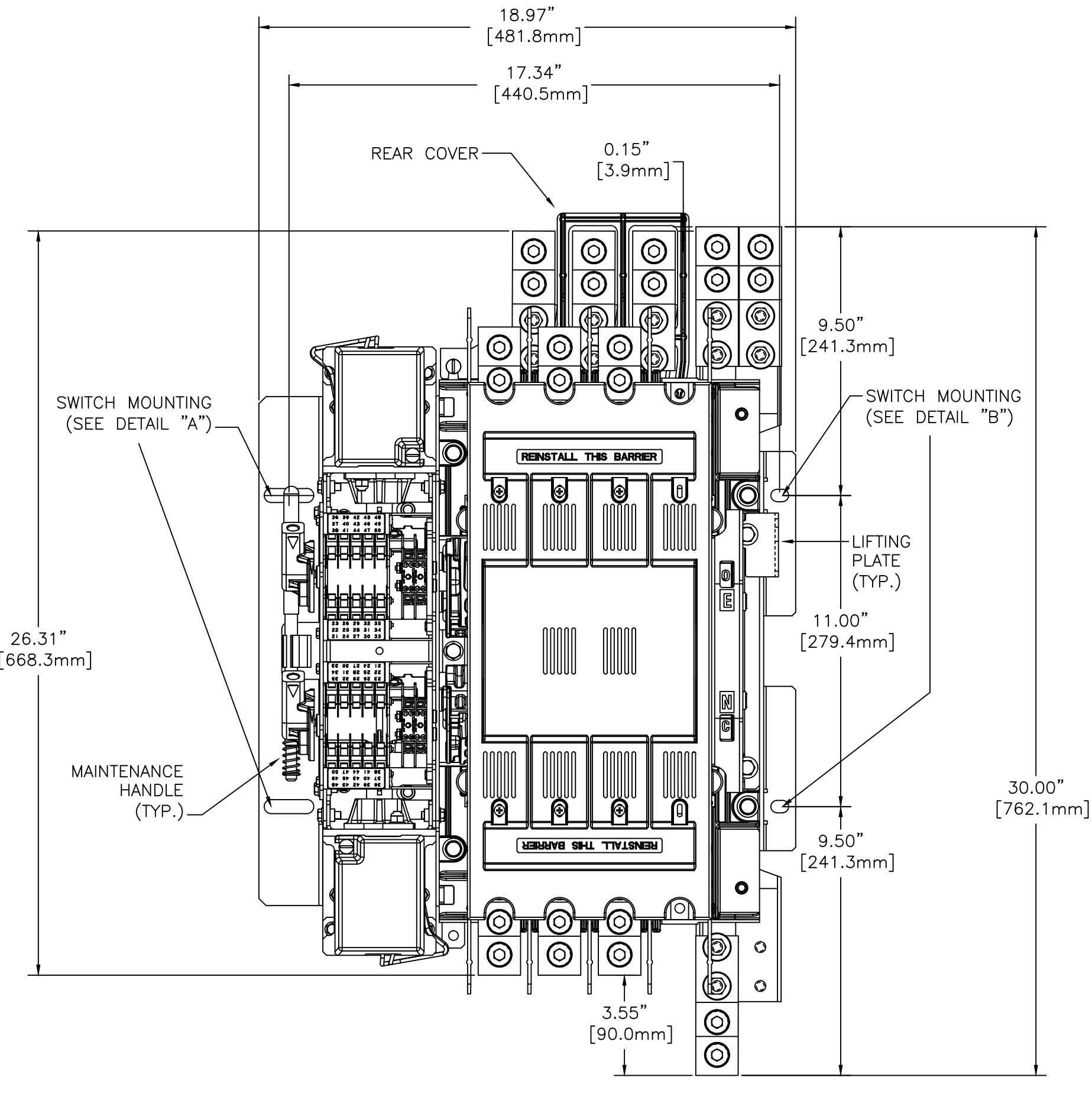
OUTLINE FOR ASCO® 300 SERIES 600 AMPERE "J" FRAME (J3ATS,J3NTS,J3ADTS,J3NDTS) FRONT CONNECTED TRANSFER SWITCHES OPEN TYPE

FRONT VIEW



600 AMP ADTS/NDTS W/ SWITCHING NEUTRAL

FRONT VIEW



600 AMP ADTS/NDTS W/ SOLID NEUTRAL

GENERAL NOTES

- THE STANDARD SWITCH CONFIGURATION IS FOR TOP (LOAD & EMERGENCY) AND BOTTOM (NORMAL).
- NEUTRAL CONFIGURATIONS:
AN OPTIONAL FULL RATED NEUTRAL CONFIGURATION FOR EACH SOURCE AND THE LOAD MAY BE PROVIDED. WHEN EQUIPPED IT IS IN ONE OF THE FOLLOWING FORMATS AS SPECIFIED BY THE CATALOG NUMBER NO. NEUTRAL TYPE:
(A) SOLID (COPPER BUS) NEUTRAL
(B) SWITCHED NEUTRAL POLE
- THE STANDARD MECHANICAL (SCREW TYPE) AL/CU TERMINAL LUGS ARE SHOWN FOR REFERENCE.
- WHEN INSTALLING CONDUCTORS, CONNECT TO SIMILARLY MARKED PHASES OF NORMAL, EMERGENCY & LOAD.
- ALL INTERNAL CONNECTIONS ARE MADE AT FACTORY.
- MAINTAIN ELECTRICAL CLEARANCE OF 1 INCH (25.4 mm) BETWEEN LIVE METAL PARTS AND GROUNDED METAL.
- WHEN MOUNTING THE TRANSFER SWITCH IN THE ENCLOSURE, THE CONTROL PANEL(S) AND OPERATOR CONTROLS SHOULD BE MOUNTED ON THE INSIDE, REAR SURFACE OF THE DOOR. 6 IN. MIN. DEPTH TO TRANSFER SWITCH FOR CONTROLS IS REQUIRED.
- THE CONTROL PANEL(S) IS CONNECTED TO THE TRANSFER SWITCH BY A HARNESS WITH A QUICK DISCONNECT PLUG(S). THE HARNESS EXITS THE TRANSFER SWITCH ON THE RIGHT SIDE. CONSULT FACTORY FOR EXTENSION HARNESSES.
- FOR TYPE 1 ENCLOSURE SEE DETAIL A -1 AND DETAIL B -1 FOR CUTOUT DATA. FOR TYPE 3R, 4, & 12 ENCLOSURE SEE DETAIL A -2 & DETAIL B -2 FOR CUTOUT DATA. GASKETS AND BEZELS ARE PROVIDED FOR TYPE 3R, 4, & 12 ENCLOSURE.
- CUSTOMER TERMINAL BLOCKS:
FOR ADTS AND NDTS THE TB WILL BE MOUNTED ON THE UPPER RIGHT INSIDE OF THE ENCLOSURE AS INDICATED BELOW.
FOR ATS AND NTS THE TB WILL BE MOUNTED ON THE TRANSFER SWITCH FRAME AS INDICATED ON THIS PAGE.

SIZE	CABLE ACCOMMODATIONS (PER PHASE & NEUTRAL)
600	SCREW TYPE (STANDARD)- (2) #2 - 600 MCM AL/CU

CABLING NOTES

- ALL SIZES SUPPLIED STANDARD WITH MECHANICAL (SCREW TYPE) LUGS. (SEE AMP SIZE BELOW)
A. LUG MATERIAL: ALUMINUM ALLOY 6061-T6 WITH ELECTRO TIN PLATED FINISH.
B. SCREW MATERIAL: ALUMINUM ALLOY 6262-T9 WITH ELECTRO TIN PLATED FINISH.
C. UL LISTED, CSA CERTIFIED.
D. LUG SCREW TIGHTENING TORQUE PER UL 486B: 19 FT.-LBS.

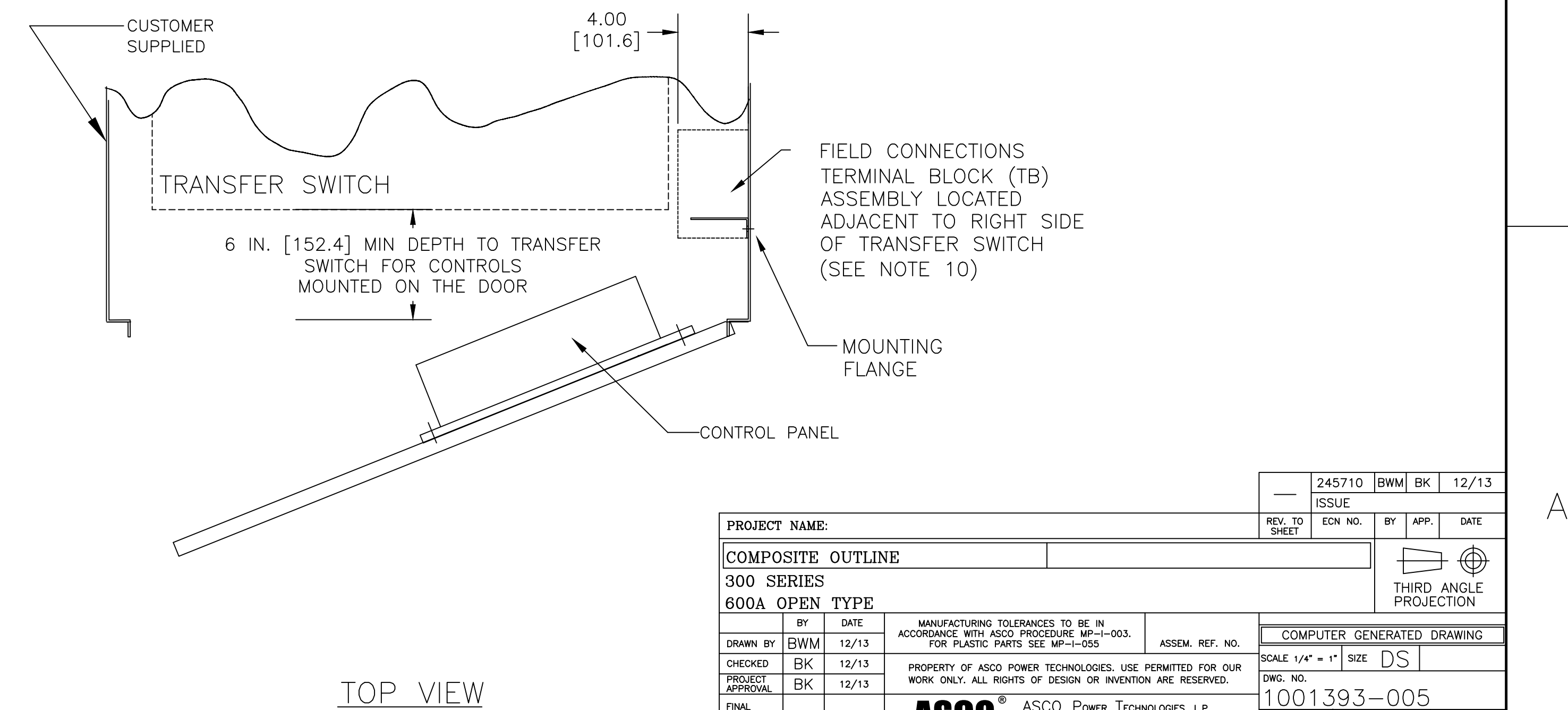
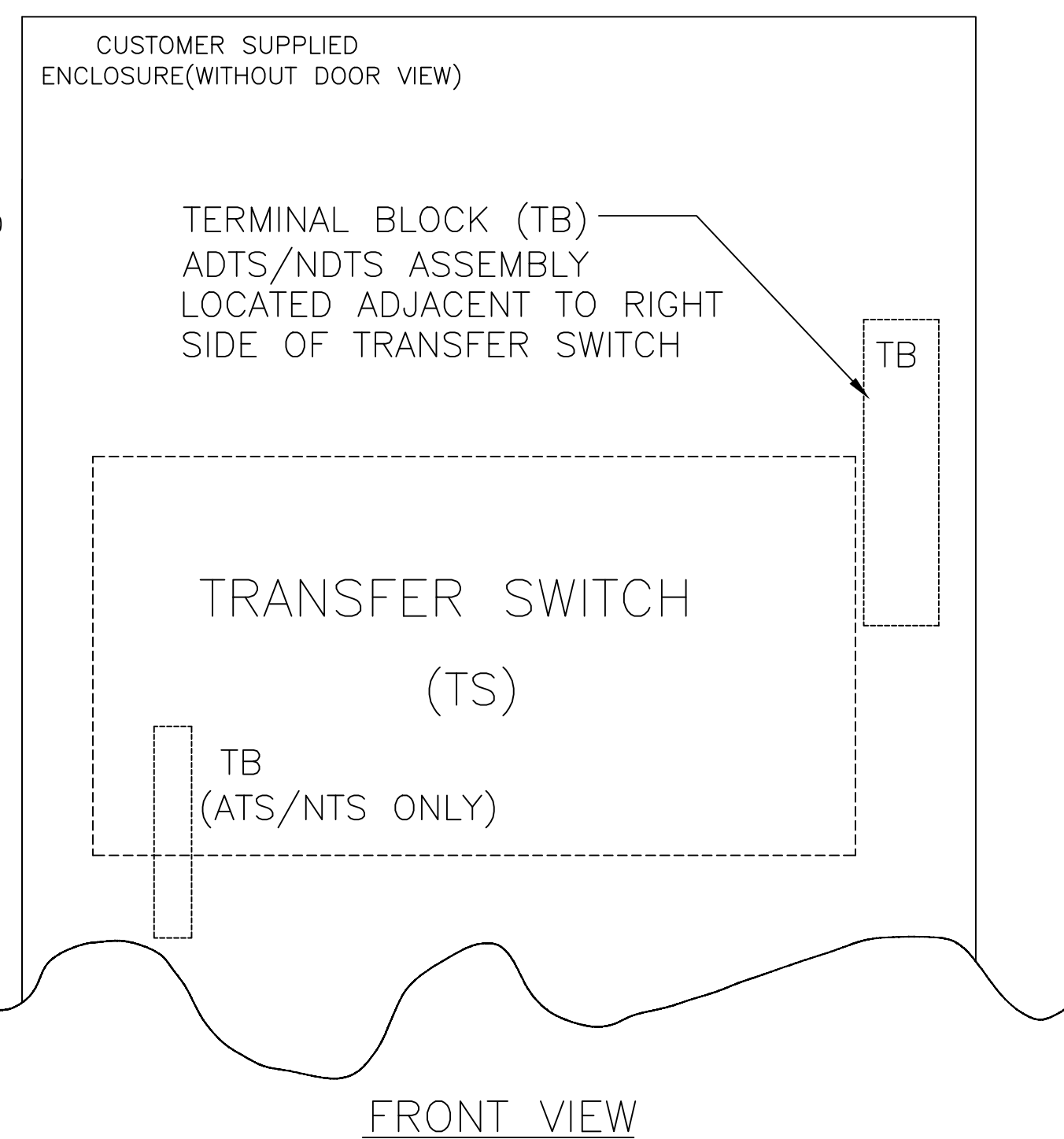
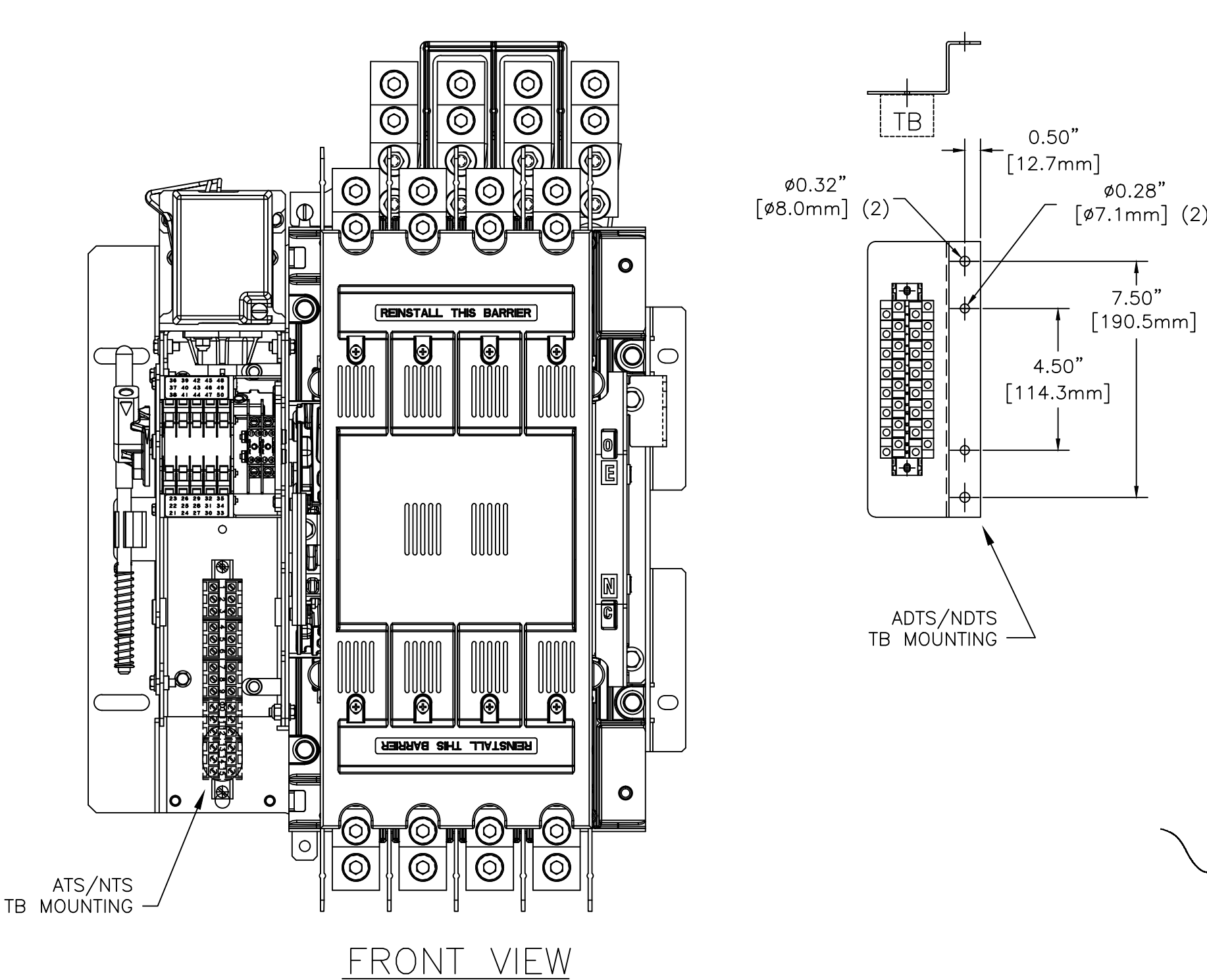
NOTES 600 AMP SWITCHES

- SUPPLIED WITH STANDARD MECHANICAL (SCREW TYPE) LUGS ON THE NORMAL, EMERGENCY & LOAD BUS STABS. ONE (1) LUG PER PHASE AND NEUTRAL EACH SUITABLE FOR CONNECTION OF TWO (2) #2 -600MCM CU/AL CABLES.

MINIMUM REQUIRED ENCLOSURE SIZE INCH (mm)

SWITCH RATING (AMPS)	HEIGHT	WIDTH	DEPTH
600	63 (1600)	24 (610)	17 (432)

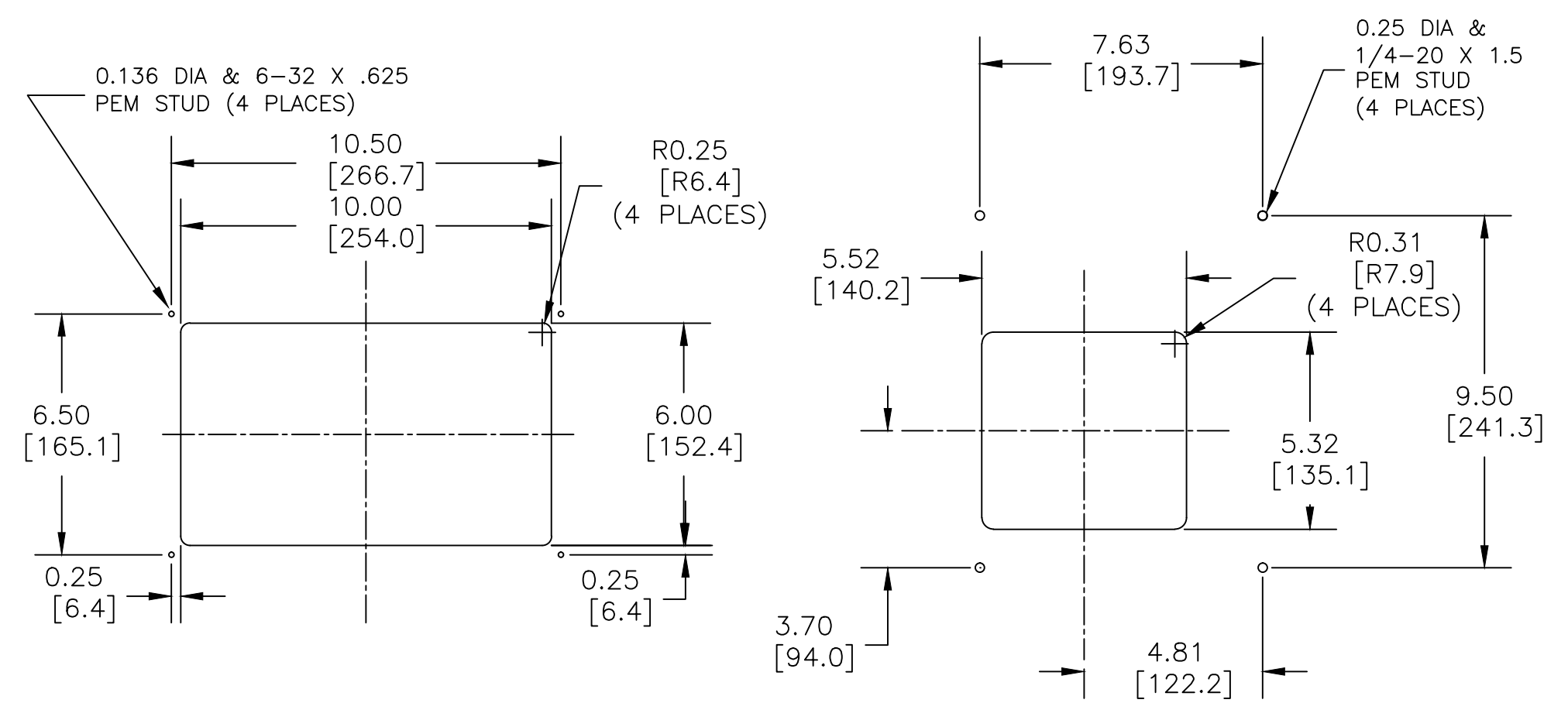
MOUNTING OF FIELD TERMINAL BLOCK ASSEMBLY (TB) (SEE NOTE 10)



PROJECT NAME:		245710	BWM	BK	12/13
REV. TO SHEET	ISSUE	ECN NO.	BY	APP.	DATE
COMPOSITE OUTLINE					
300 SERIES					
600A OPEN TYPE					
BY	DATE	MANUFACTURING TOLERANCES TO BE IN ACCORDANCE WITH ASCO PROCEDURE MP-1-003. FOR PLASTIC PARTS SEE MP-1-005.		ASSEM. REF. NO.	COMPUTER GENERATED DRAWING
DRAWN BY	BWM	12/13	PROPERTY OF ASCO POWER TECHNOLOGIES. USE PERMITTED FOR OUR WORK ONLY. ALL RIGHTS OF DESIGN OR INVENTION ARE RESERVED.		SCALE 1/4" = 1" SIZE DS
CHECKED	BK	12/13	ASCOT		DWG. NO.
PROJECT APPROVAL	BK	12/13	ASCOT		1001393-005
FINAL APPROVAL			ASCOT		DRAWING - ECN 245710 SHEET 2 OF 3

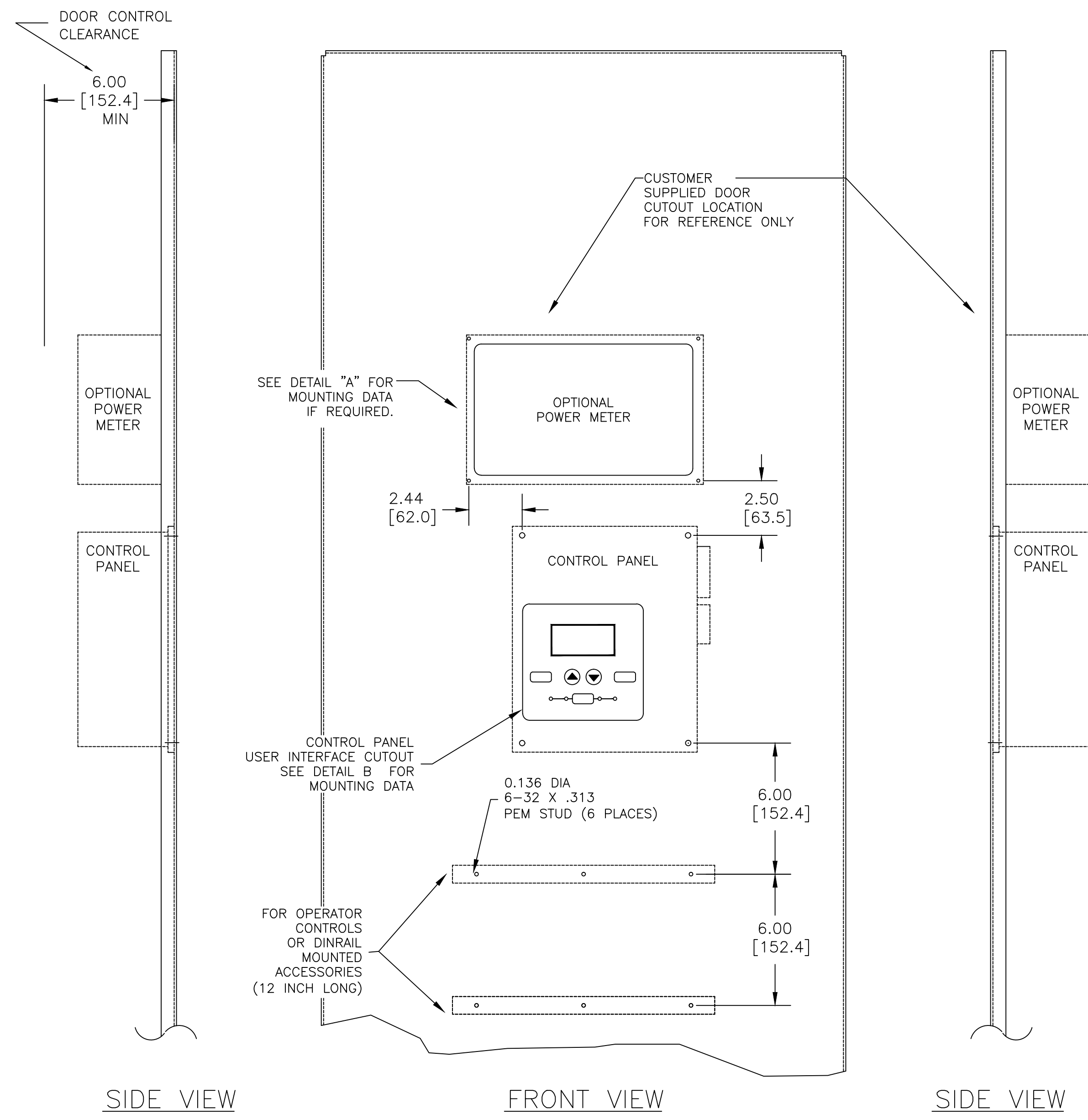
OUTLINE FOR ASCO® 300 SERIES 600 AMPERE "J" FRAME (J3ATS,J3NTS,J3ADTS,J3NDTS) FRONT CONNECTED TRANSFER SWITCHES OPEN TYPE

CONTROL PANEL & CONTROLS MOUNTING DATA

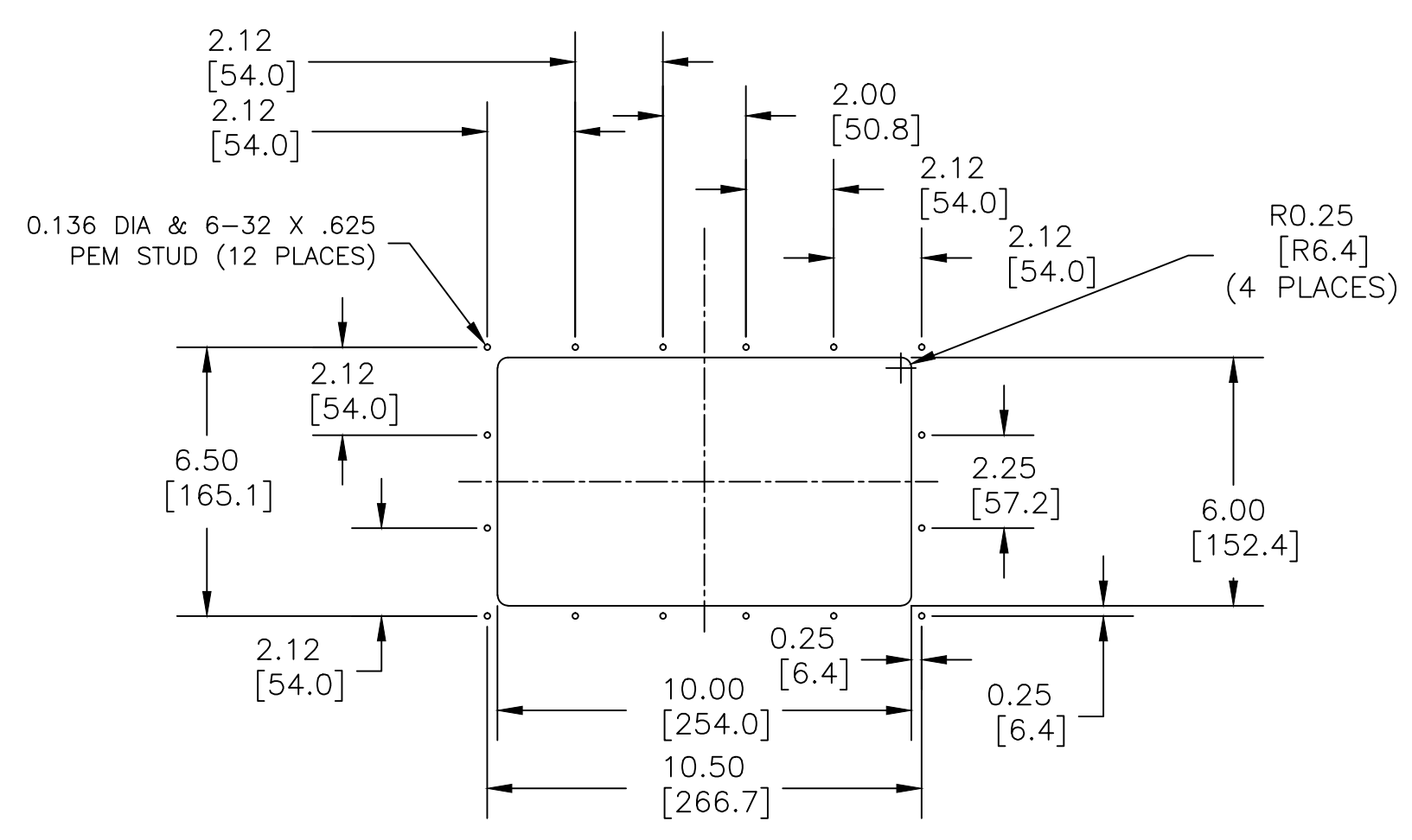
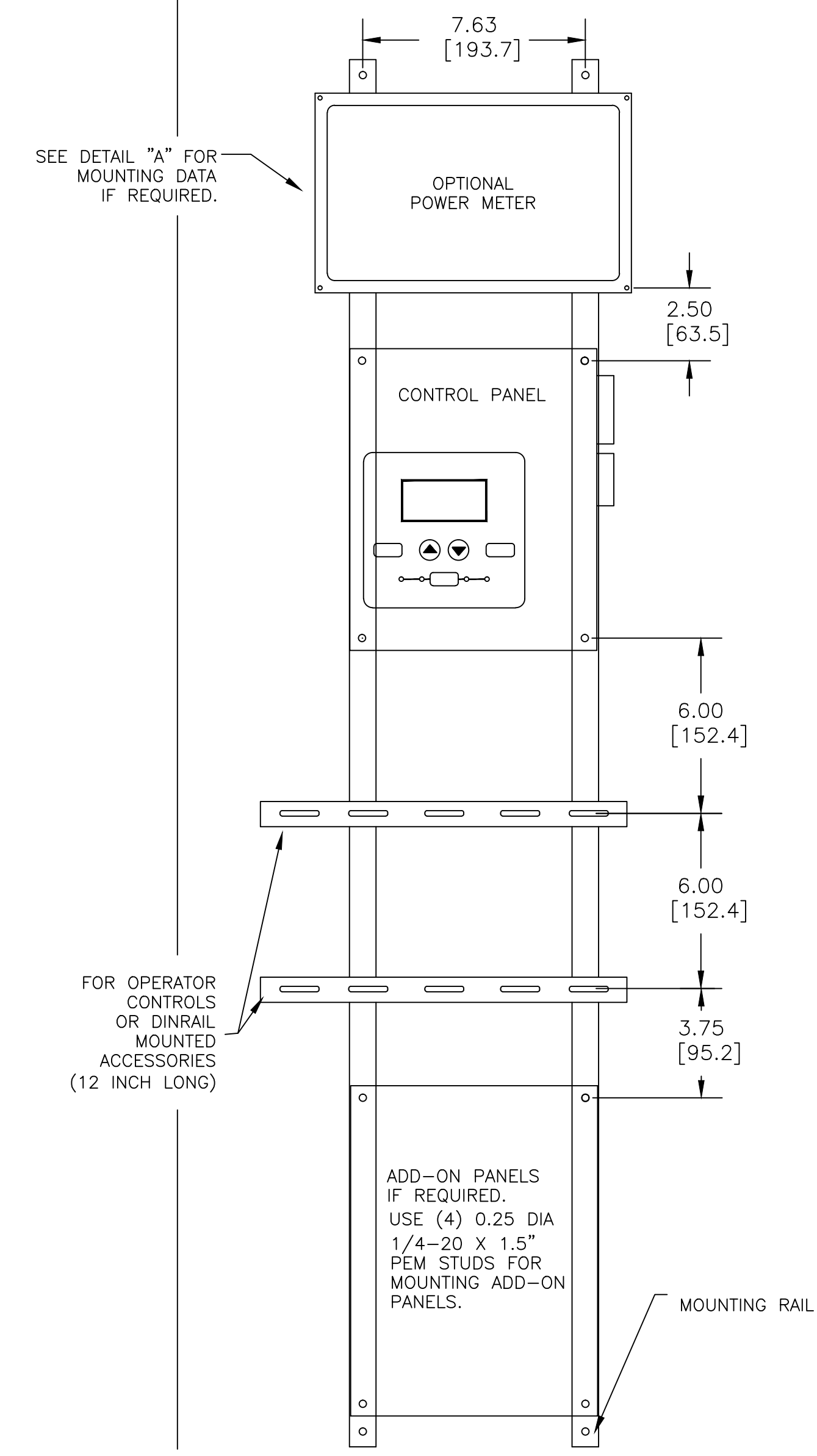


DETAIL A -1 (FOR TYPE 1) DETAIL B -1 (FOR TYPE 1)

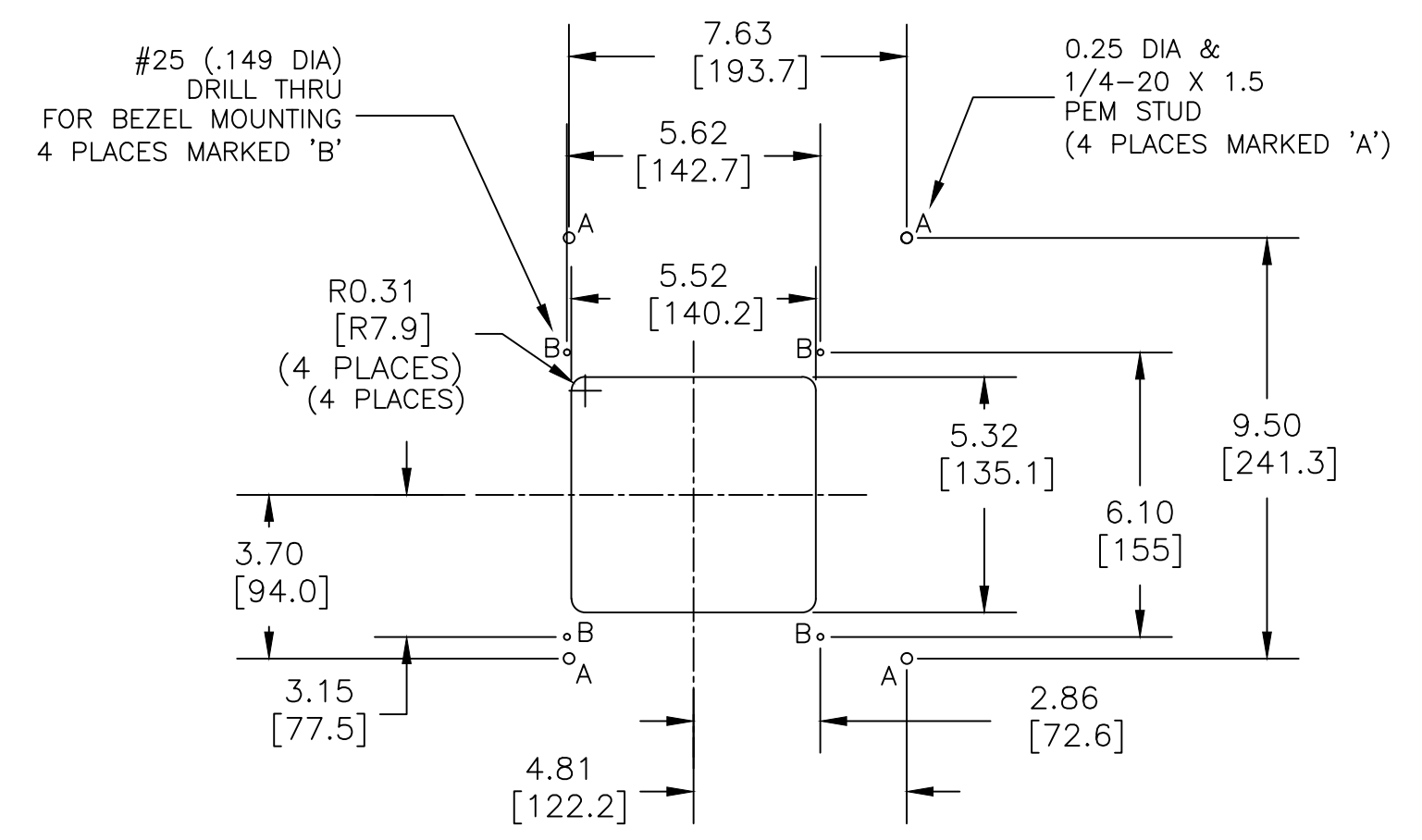
CONTROL PANEL & CONTROLS MOUNTING



DEVICES ON MOUNTING RAILS FOR SHIPMENT ONLY



DETAIL A -2 (FOR TYPE 3R, 12 & 4)



DETAIL B -2 (FOR TYPE 3R, 12 & 4)

PROJECT NAME:		245710	BWM	BK	12/13
REV. TO SHEET	ISSUE	ECN NO.	BY	APP.	DATE
COMPOSITE OUTLINE					
300 SERIES					
600A OPEN TYPE					
MANUFACTURING TOLERANCES TO BE IN ACCORDANCE WITH ASCO PROCEDURE MP-1-003. FOR PLASTIC PARTS SEE MP-1-005.			ASSEM. REF. NO.		COMPUTER GENERATED DRAWING
DRAWN BY	BWM	12/13	SCALE 1/4" = 1" SIZE DS		DWG. NO.
CHECKED	BK	12/13	PROPERTY OF ASCO POWER TECHNOLOGIES. USE PERMITTED FOR OUR WORK ONLY. ALL RIGHTS OF DESIGN OR INVENTION ARE RESERVED.		1001393-005
PROJECT APPROVAL	BK	12/13	DRAWING -		ECN NO. 245710
FINAL APPROVAL			ASCO® ASCO POWER TECHNOLOGIES, L.P. FLOHAM PARK, NEW JERSEY 07932 U.S.A.		SHEET 3 OF 3