

OUTLINE & MOUNTING FOR ASCO® 7000 SERIES AUTOMATIC TRANSFER SWITCH & BYPASS-ISOLATION SWITCHES TYPES 7ATB, 7ACTB & 7ADTB RATED 2600-3000 AMPERES

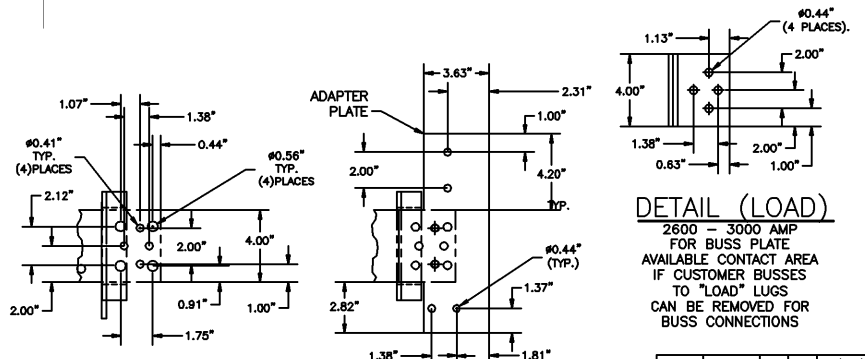
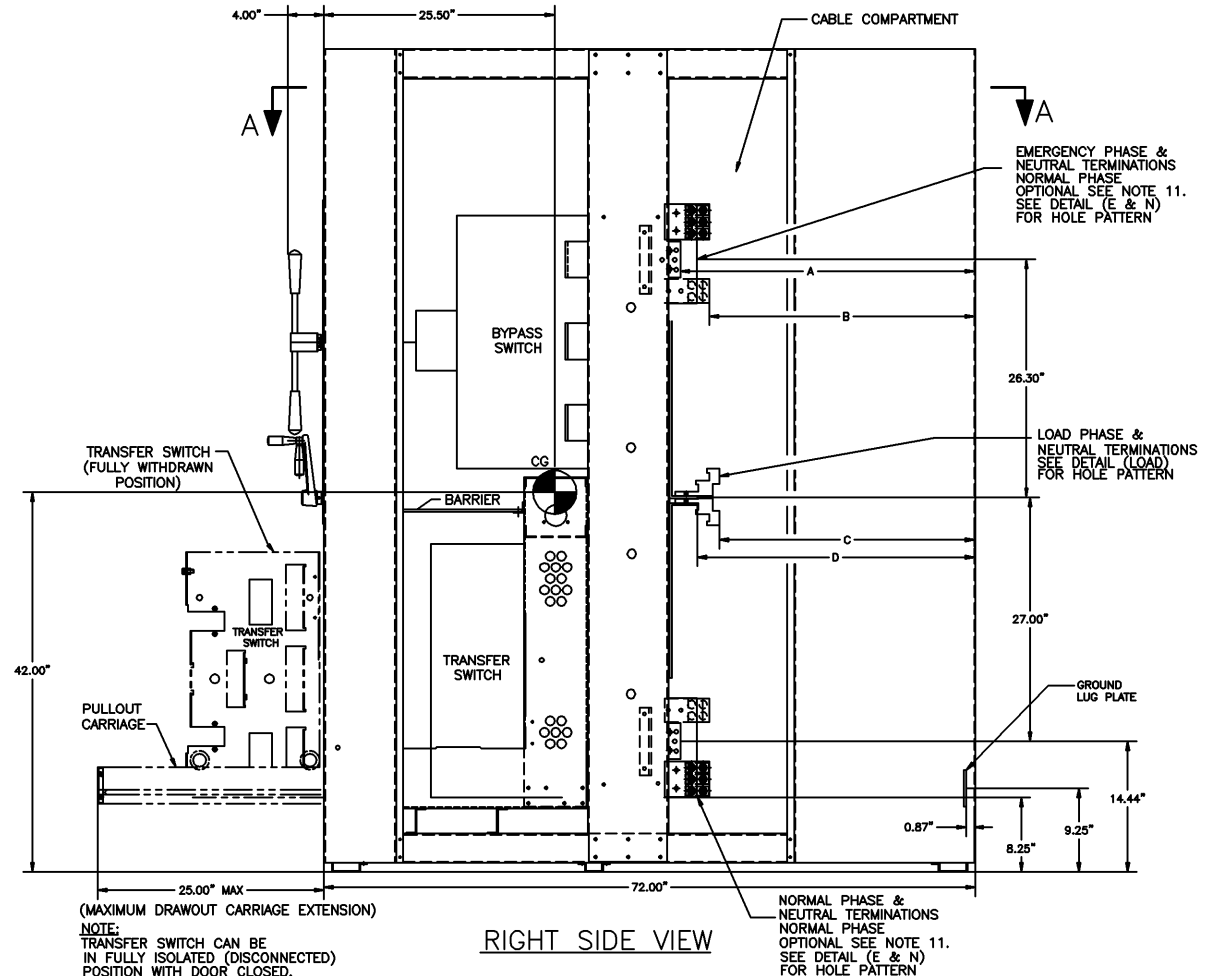
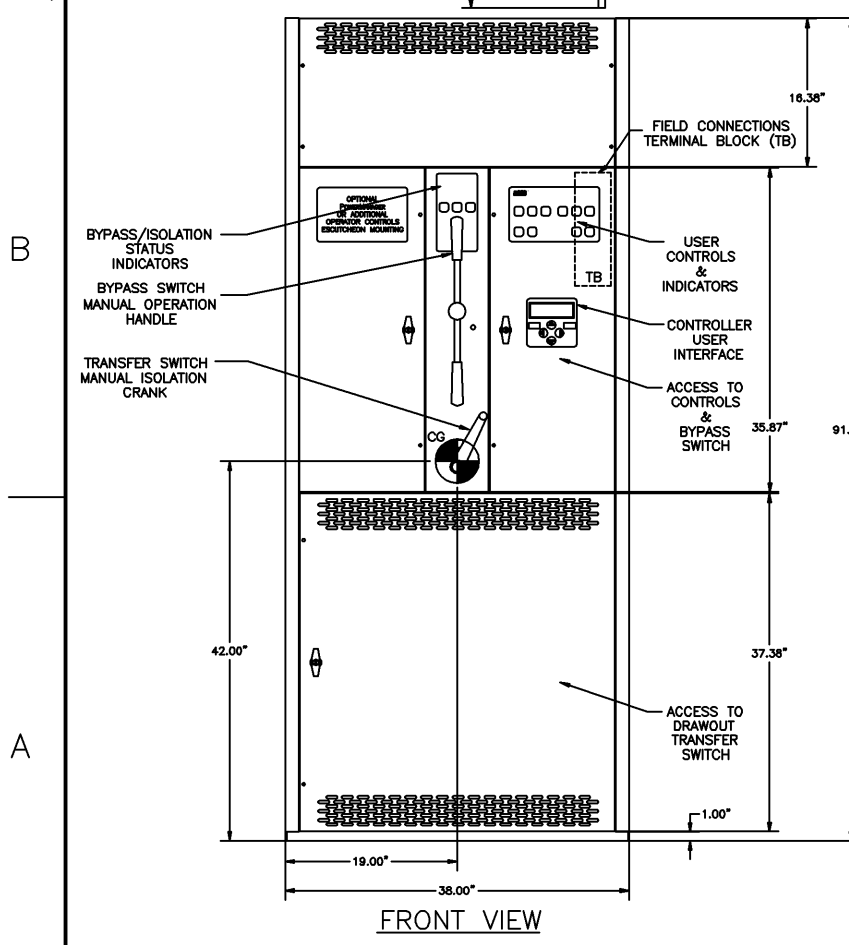
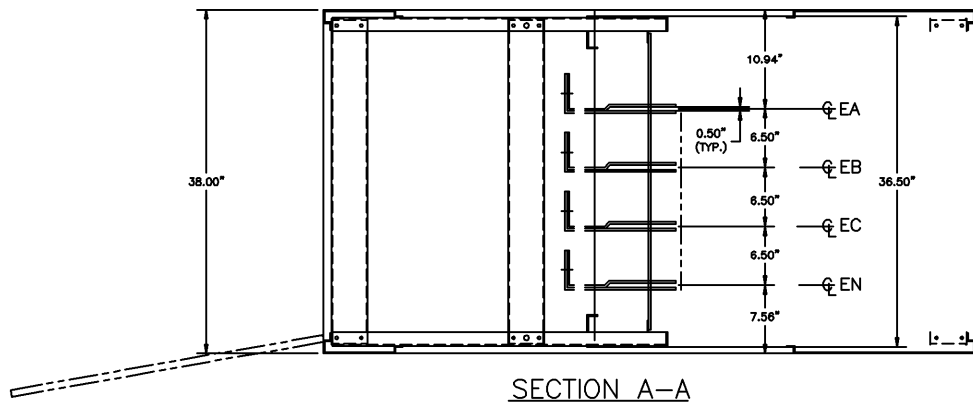
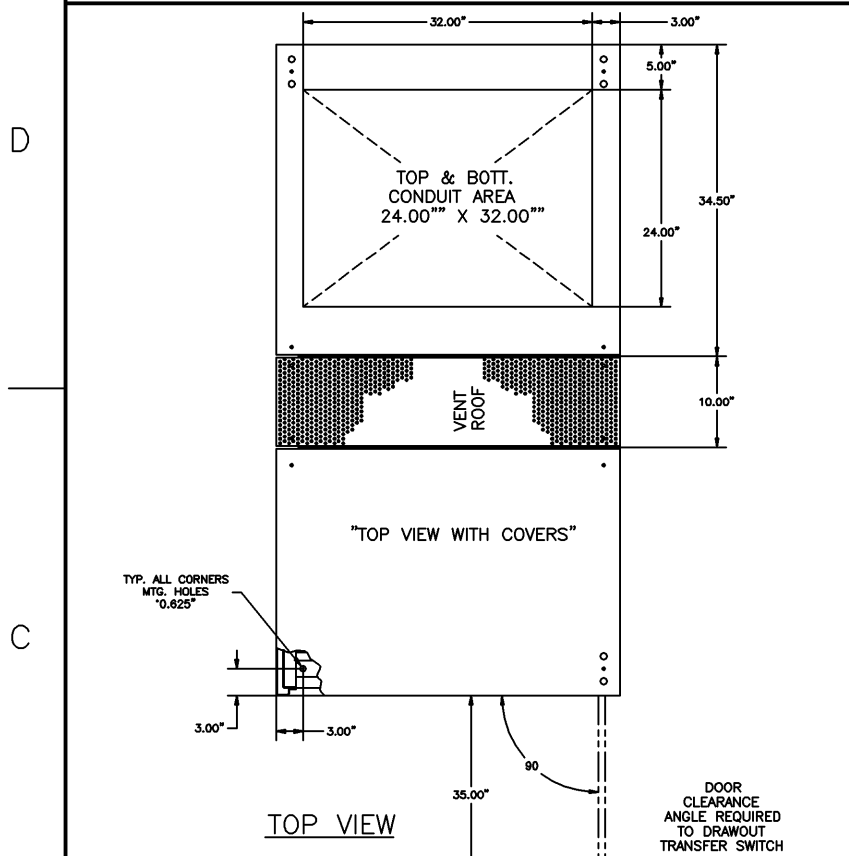
BUS/LUG DISTANCE TO INSIDE OF BACK PANEL		
	DIM.	2600/3000 A
EMER & NORM BUS TO INSIDE OF BACK PANEL	"A"	32.80"
EMER & NORM LUG TO INSIDE OF BACK PANEL	"B"	29.50"
LOAD LUG TO INSIDE OF BACK PANEL	"C"	28.25"
LOAD BUS TO INSIDE OF BACK PANEL	"D"	30.75"

GENERAL NOTES

- TYPE 1 ENCLOSURE. FREE STANDING. FLOOR MOUNTED. CODE GAUGE STEEL.
- NEC STANDARD GAUGE PAN TYPE DOORS WITH LOCKABLE HANDLES AND REMOVABLE COVERS.
- FINISH: ANSI 61 GRAY, POLYESTER POWDER.
- CONSTRUCTION IS IN ACCORDANCE WITH APPLICABLE REQUIREMENTS OF UL 1008.
- PADLOCKING PROVISIONS ARE INCLUDED: ISOLATION CRANK; THE TRANSFER SWITCH ISOLATION CRANK MAY BE PADLOCKED WITH THE TRANSFER SWITCH IN THE FULLY ISOLATED (DISCONNECTED POSITION).
- UNIT CAN BE ADAPTED FOR CONNECTION OF BUS DUCT FLANGES. (CONSULT FACTORY)
- RECOMMENDED CLEARANCES:
FRONT: 48.00" INCHES
REAR: 38.00" INCHES
- A 20% RATED GROUND BUS IS PROVIDED AT THE BOTTOM REAR OF THE CABLE COMPARTMENT.
- A FULL RATED NEUTRAL CONNECTION FOR EACH SOURCE AND THE LOAD IS OPTIONAL, WHEN PROVIDED IT IS IN ONE OF THE FOLLOWING FORMATS AS SPECIFIED BY THE CATALOG NO. NEUTRAL TYPE:
A: SOLID NEUTRAL BUS
B: SWITCHED NEUTRAL POLE
C: OVERLAPPING NEUTRAL POLE (NOT AVAILABLE ON 7ADTB UNITS)
- CENTER OF GRAVITY
- THE STANDARD SWITCH CONFIGURATION IS FOR TOP EMERGENCY, CENTER LOAD, AND BOTTOM NORMAL. OPTIONALLY, THE SWITCH MAY BE SUPPLIED WITH REVERSE SOURCES. (REFER TO THE WIRING DIAGRAM FURNISHED WITH EACH TRANSFER SWITCH TO DETERMINE TERMINATION POSITIONS).

CABLING NOTES

- ALL SIZES SUPPLIED STANDARD WITH MECHANICAL (SCREW TYPE) LUGS ON THE NORMAL, EMERGENCY & LOAD SUITABLE FOR CONNECTION OF TEN (10) 1/0-750 MCM CU/AL CABLES.
SUITABLE WIRE BENDING SPACE IS PROVIDED FOR UP TO TEN (10) 600 MCM CABLES PER TERMINAL PER NFPA 70.
- OPTIONAL COPPER CRIMP LUGS MAY BE SUPPLIED. UP TO EIGHT (8) TWO HOLE, LONG BARREL CU CRIMP LUGS RATED FOR UP TO 600 MCM. (REFER TO CRIMP LUG INSTALLATION DATA PROVIDED WITH UNIT FOR FULL INSTALLATION DETAILS).
SUITABLE WIRE BENDING SPACE IS PROVIDED FOR UP TO EIGHT (8) 600 MCM CABLES PER TERMINAL PER NFPA 70.
- GROUND LUGS ARE PROVIDED STANDARD AS FOLLOWS:
(36) 1/0-750 MCM CU/AL CABLES.
- CONSULT FACTORY FOR OTHER TERMINATION REQUIREMENTS.



PROJECT NAME:	REV. TO SHEET	EDN NO.	BY	APP.	DATE
OUTLINE & MOUNTING					
7000 SERIES TRANSFER SWITCH AND BYPASS/ISOLATION					
DRAWN BY	DATE	MANUFACTURING TOLERANCES TO BE IN ACCORDANCE WITH ASCO PROCEDURE MP-1-003. FOR PLASTIC PARTS SEE MP-1-005	ASSEMB. REF. NO.	COMPUTER GENERATED DRAWING	
CHECKED	MM 10/28/01	PROPERTY OF ASCO POWER TECHNOLOGIES. USE PERMITTED FOR OUR WORK ONLY. ALL RIGHTS OF DESIGN OR INVENTION ARE RESERVED.		SCALE	1:1 SIZE DS
TRUST APPROVAL	WK 10/28/01			DWG. NO.	727400
FINAL APPROVAL				DRAWING G	REV. 233665
					SHEET 1 OF 1

ASCO ASCO POWER TECHNOLOGIES, LP. FLORENCE PARK, NEW JERSEY 07032 U.S.A.