

OUTLINE & MOUNTING FOR ASCO® 7000 SERIES AUTOMATIC TRANSFER & BYPASS-ISOLATION SWITCHES TYPES 7ATB, 7ACTB & 7ADTB RATED 1000-2000 AMPERES

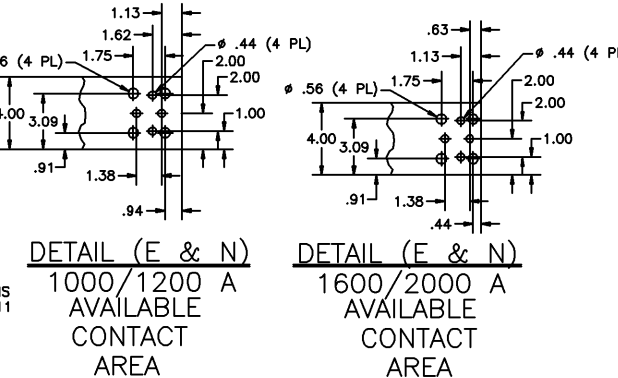
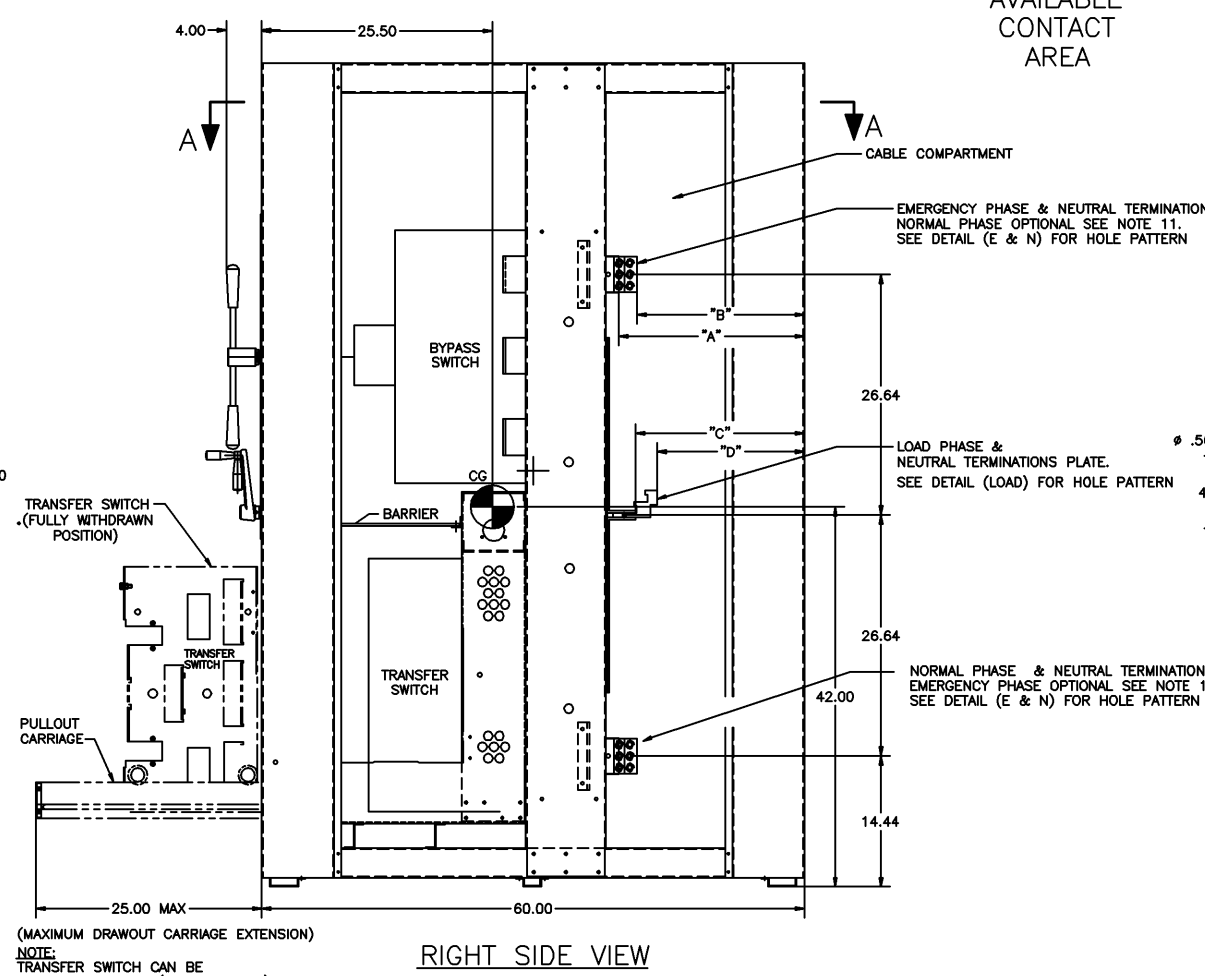
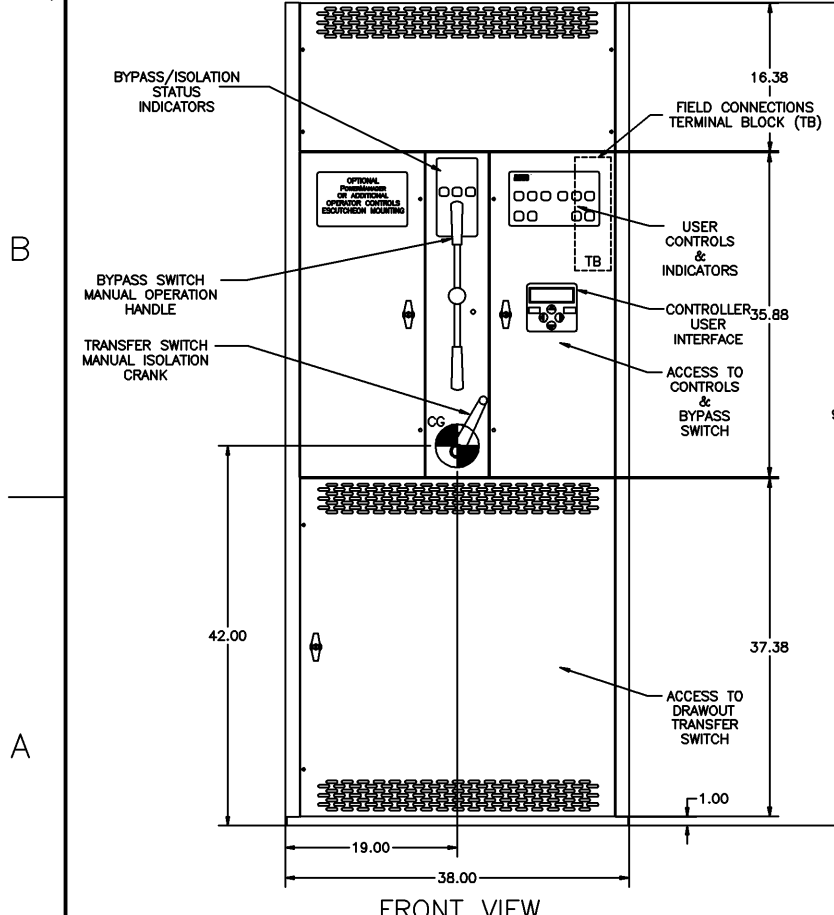
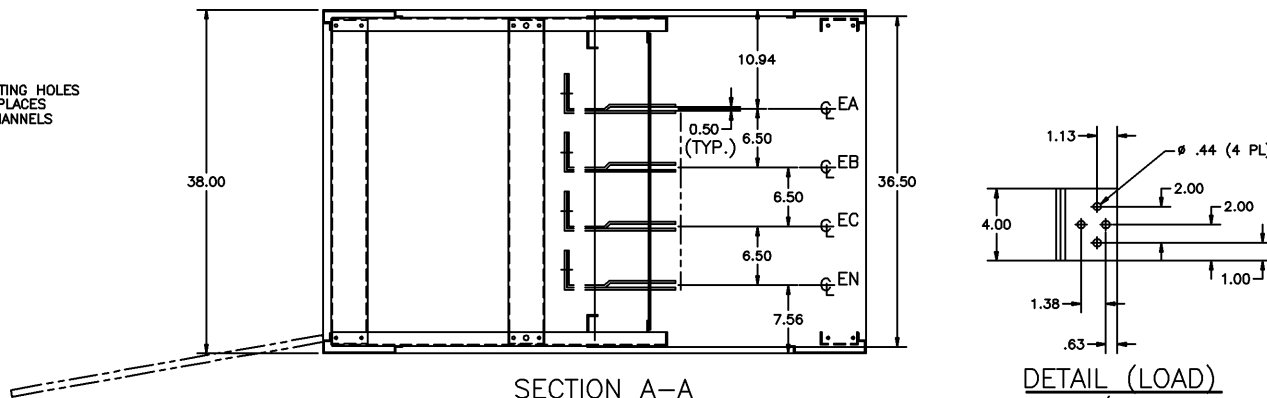
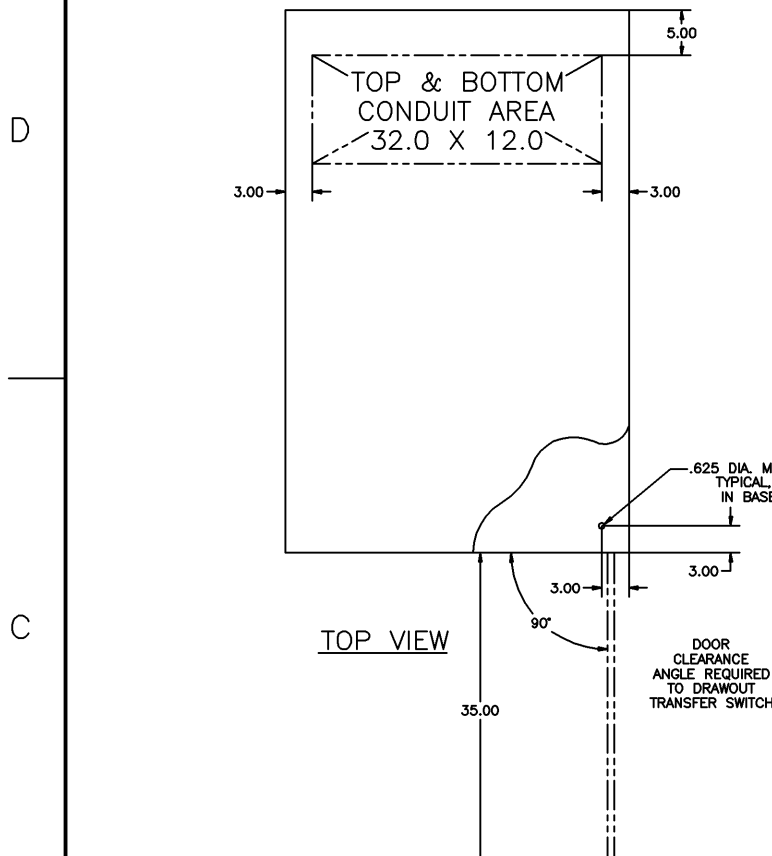
BUS LOCATION CHART			
	DIM.	1000/1200 A	1600/2000 A
EMER & NORM BUS TO BACK CORNER POST	"A"	20.30	20.80
LOAD BUS TO BACK CORNER POST	"C"	19.00	18.75
EMER & NORM LUG TO BACK CORNER POST	"B"	18.30	18.30
LOAD LUG TO BACK CORNER POST	"D"	16.50	16.25

GENERAL NOTES

- TYPE 1 ENCLOSURE. FREE STANDING. FLOOR MOUNTED. CODE GAUGE STEEL.
- NEC STANDARD GAUGE PAN TYPE DOORS WITH LOCKABLE HANDLES AND REMOVABLE COVERS.
- FINISH: ANSI 61 GRAY, POLYESTER POWDER STANDARD, OTHER ANSI COLORS AVAILABLE CONSULT FACTORY, UL RECOGNIZED.
- CONSTRUCTION IS IN ACCORDANCE WITH APPLICABLE REQUIREMENTS OF UL 1008.
- PADLOCKING PROVISIONS ARE INCLUDED:
ISOLATION CRANK: THE TRANSFER SWITCH ISOLATION CRANK MAY BE PADLOCKED WITH THE TRANSFER SWITCH IN THE FULLY ISOLATED (DISCONNECTED POSITION).
- UNIT CAN BE ADAPTED FOR CONNECTION OF BUS DUCT FLANGES. (CONSULT FACTORY)
- RECOMMENDED CLEARANCES:
FRONT: 48 INCHES
REAR: 36 INCHES
- A 20% RATED GROUND BUS IS PROVIDED AT THE BOTTOM REAR OF THE CABLE COMPARTMENT.
- A FULL RATED NEUTRAL CONNECTION FOR EACH SOURCE AND THE LOAD IS OPTIONAL. WHEN PROVIDED IT IS IN ONE OF THE FOLLOWING FORMATS AS SPECIFIED BY THE CATALOG NO. NEUTRAL TYPE:
A: SOLID NEUTRAL BUS
B: SWITCHED NEUTRAL POLE
C: OVERLAPPING NEUTRAL POLE (NOT AVAILABLE ON 7ADTB UNITS)
- CENTER OF GRAVITY
- THE STANDARD SWITCH CONFIGURATION IS FOR TOP EMERGENCY, CENTER LOAD, AND BOTTOM NORMAL. OPTIONALLY, THE SWITCH MAY BE SUPPLIED WITH REVERSE SOURCES. (REFER TO THE WIRING DIAGRAM FURNISHED WITH EACH TRANSFER SWITCH TO DETERMINE TERMINATION POSITIONS).

CABLING NOTES

- ALL SIZES SUPPLIED STANDARD WITH MECHANICAL (SCREW TYPE) LUGS ON THE NORMAL, EMERGENCY & LOAD BUS STABS. ONE (1) LUG PER PHASE AND NEUTRAL EACH SUITABLE FOR CONNECTION OF FOUR (4) 1/0-750 MCM CU/AL CABLE FOR 1000-1200 AMP SWITCH. (SEE NOTE "E" BELOW). SIX (6) 1/0-750 MCM CU/AL CABLE FOR 1600-2000 AMP SWITCH (SEE NOTE "E" BELOW).
A. LUG MATERIAL: ALUMINUM ALLOY 6061-T6 WITH ELECTRO TIN PLATED FINISH.
B. SCREW MATERIAL: ALUMINUM ALLOY 6262-T9 WITH ELECTRO TIN PLATED FINISH.
C. UL LISTED, CSA CERTIFIED.
D. LUG SCREW TIGHTENING TORQUE PER UL 486B: 19 FT-LBS.
E. SUITABLE WIRE BENDING SPACE IS PROVIDED FOR UP TO FOUR (4) 600MCM CABLES PER TERMINAL FOR THE 1000-1200 AMP SWITCH & (6) 600 MCM CABLES PER TERMINAL FOR THE 1600-2000 AMP SWITCH PER TABLE 373-6(b) OF NFPA 70 OF THE NEC.
A. LUG MATERIAL: HIGH CONDUCTIVITY WROUGHT COPPER FINISH, ELECTRO TIN PLATED.
B. UL LISTED, CSA CERTIFIED.
C. LUG MOUNTING HARDWARE TIGHTENING TORQUE: (REFER TO WITHSTAND CURRENT RATING LABEL PROVIDED ON EACH TRANSFER SWITCH).
D. SUITABLE WIRE BENDING SPACE IS PROVIDED FOR UP TO FOUR (4) 600MCM CABLES PER TERMINAL PER TABLE 373-6(b) OF NFPA 70 OF THE NEC.
- OPTIONAL COPPER CRIMP LUGS MAY BE SUPPLIED. UP TO FOUR (4) TWO HOLE, LONG BARREL CU CRIMP LUGS RATED FOR UP TO 600MCM. (REFER TO CRIMP LUG INSTALLATION DATA PROVIDED WITH UNIT FOR FULL INSTALLATION DETAILS).
A. LUG MATERIAL: HIGH CONDUCTIVITY WROUGHT COPPER FINISH, ELECTRO TIN PLATED.
B. UL LISTED, CSA CERTIFIED.
C. LUG MOUNTING HARDWARE TIGHTENING TORQUE: (REFER TO WITHSTAND CURRENT RATING LABEL PROVIDED ON EACH TRANSFER SWITCH).
D. SUITABLE WIRE BENDING SPACE IS PROVIDED FOR UP TO FOUR (4) 600MCM CABLES PER TERMINAL PER TABLE 373-6(b) OF NFPA 70 OF THE NEC.
- GROUND LUGS ARE PROVIDED STANDARD AS FOLLOWS:
(12) 750MCM - 1/0 CU/AL CABLE FOR THE 1000-1200 AMP SWITCH.
(18) 750MCM - 1/0 CU/AL CABLE FOR THE 1600-2000 AMP SWITCH.
- CONSULT FACTORY FOR OTHER TERMINATION REQUIREMENTS.



NOTE:
TRANSFER SWITCH CAN BE IN FULLY ISOLATED (DISCONNECTED) POSITION WITH DOOR CLOSED.

F	233624	WK	BK	09/07/11
E	225835	WK	BK	04/23/10
D	220398	TR	WK	10/21/08
C	210827	MM	MM	10/30/08
B	204289	AJM	WK	04/28/05
A	159837	TR	WK	01/30/02
-	148181	SDH	SDH	11/97
		ISSUE		

PROJECT NAME:		REV. TO SHEET	EDN NO.	BY	APP.	DATE
OUTLINE & MOUNTING						
7000 SERIES TRANSFER AND BYPASS-ISOLATION						
DRAWN BY	DATE	MANUFACTURING TOLERANCES TO BE IN ACCORDANCE WITH ASCO PROCEDURE MP-1-003. FOR PLASTIC PARTS SEE MP-1-005	ASSEM. REF. NO.	COMPUTER GENERATED DRAWING		
CHECKED		PROPERTY OF ASCO POWER TECHNOLOGIES. USE PERMITTED FOR OUR WORK ONLY. ALL RIGHTS OF DESIGN OR INVENTION ARE RESERVED.		SCALE	SIZE	DS
FINAL APPROVAL	SDH 11/97	ASCO POWER TECHNOLOGIES, LP.		617441		
		FLORHAM PARK, NEW JERSEY 07932 U.S.A.		DRAWING NO.	EDN NO.	SHEET
				F	233624	1 OF 1