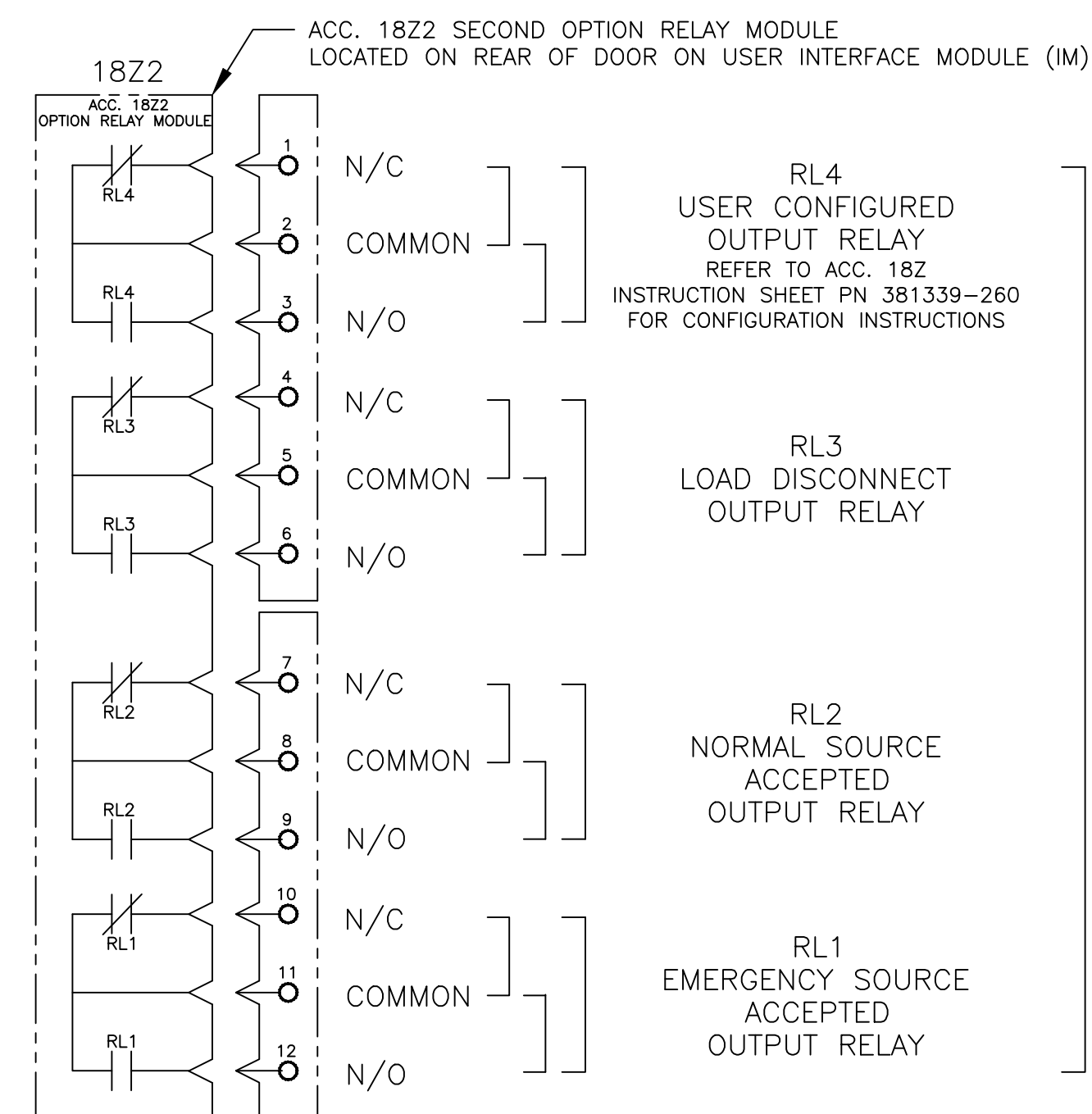
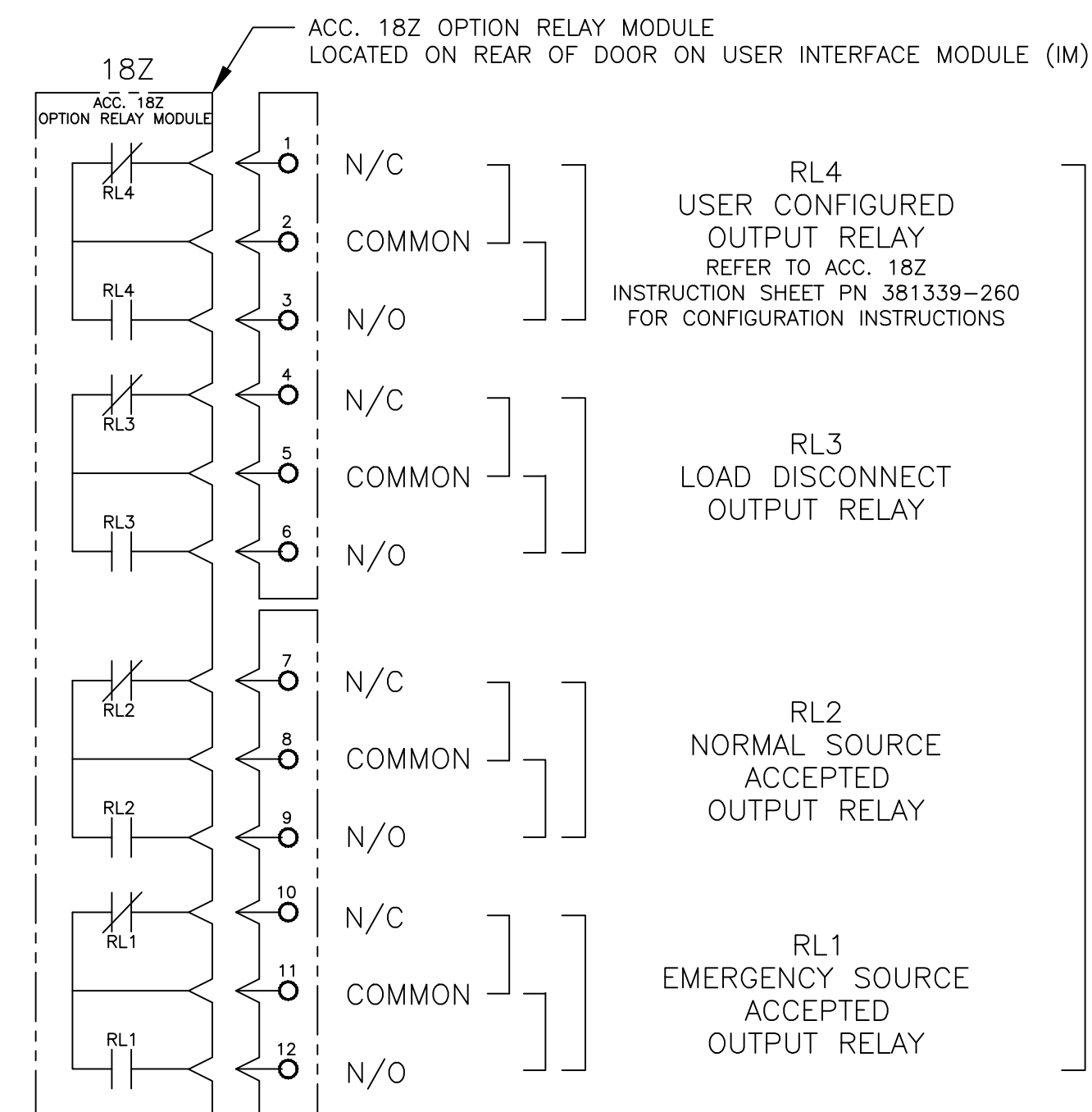
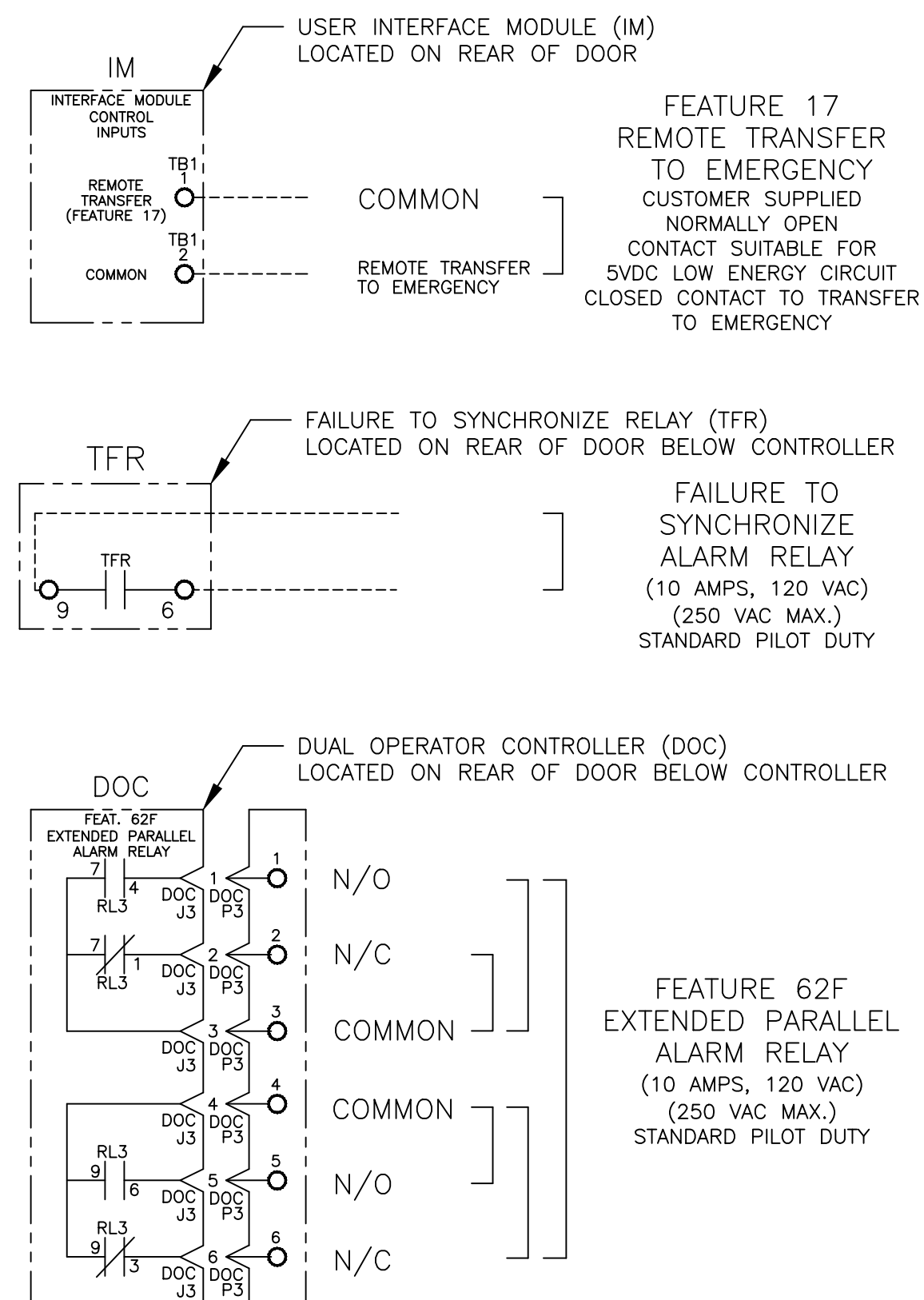
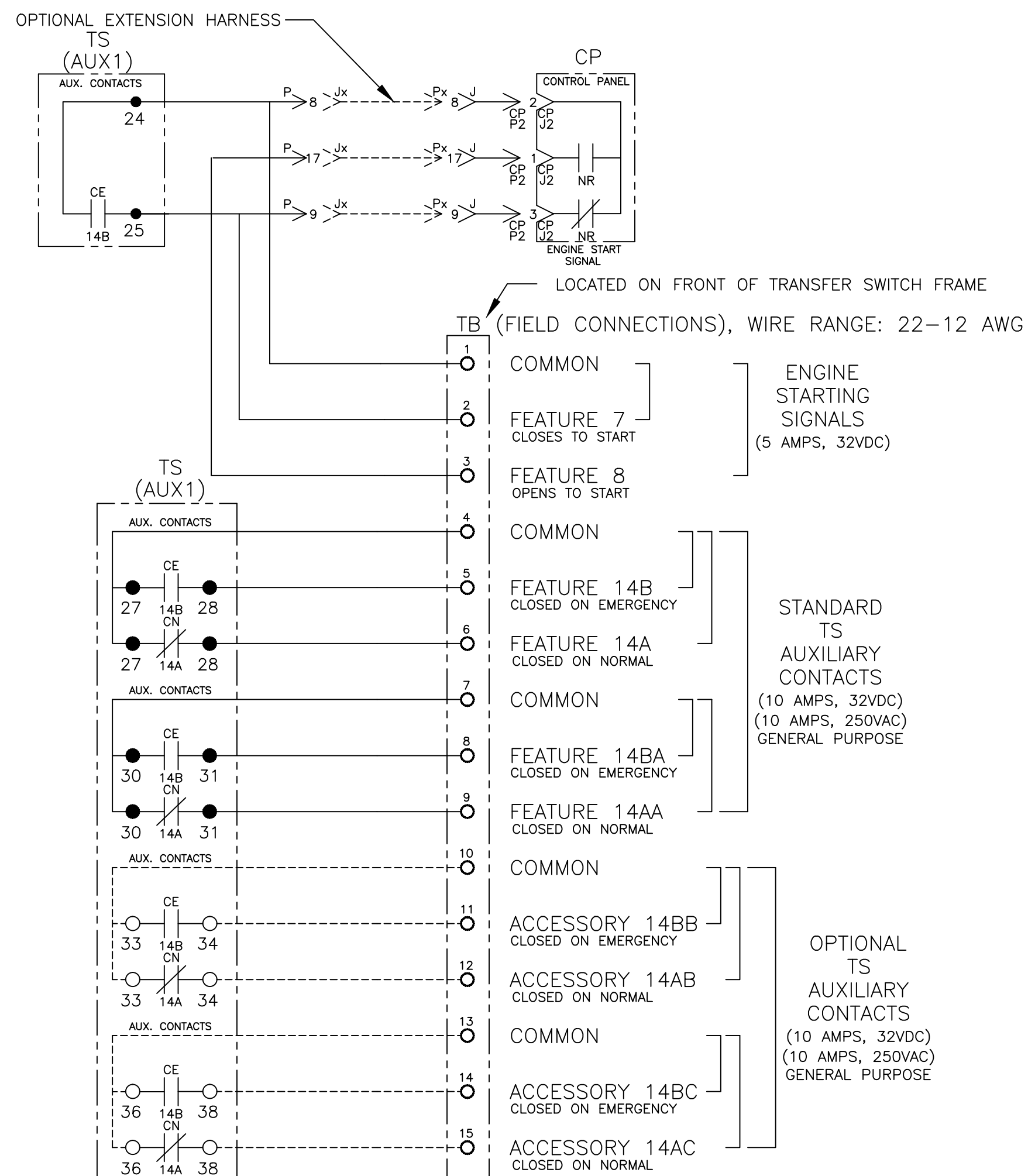




# FIELD CONNECTIONS



D	236871	TR	BK	04/30/12
C	231586	TR	BK	04/14/11
B	207659	MM	BK	02/23/06
A	205131	JPB	JPB	7/12/05
—	204825	BWM	SDH	6/05

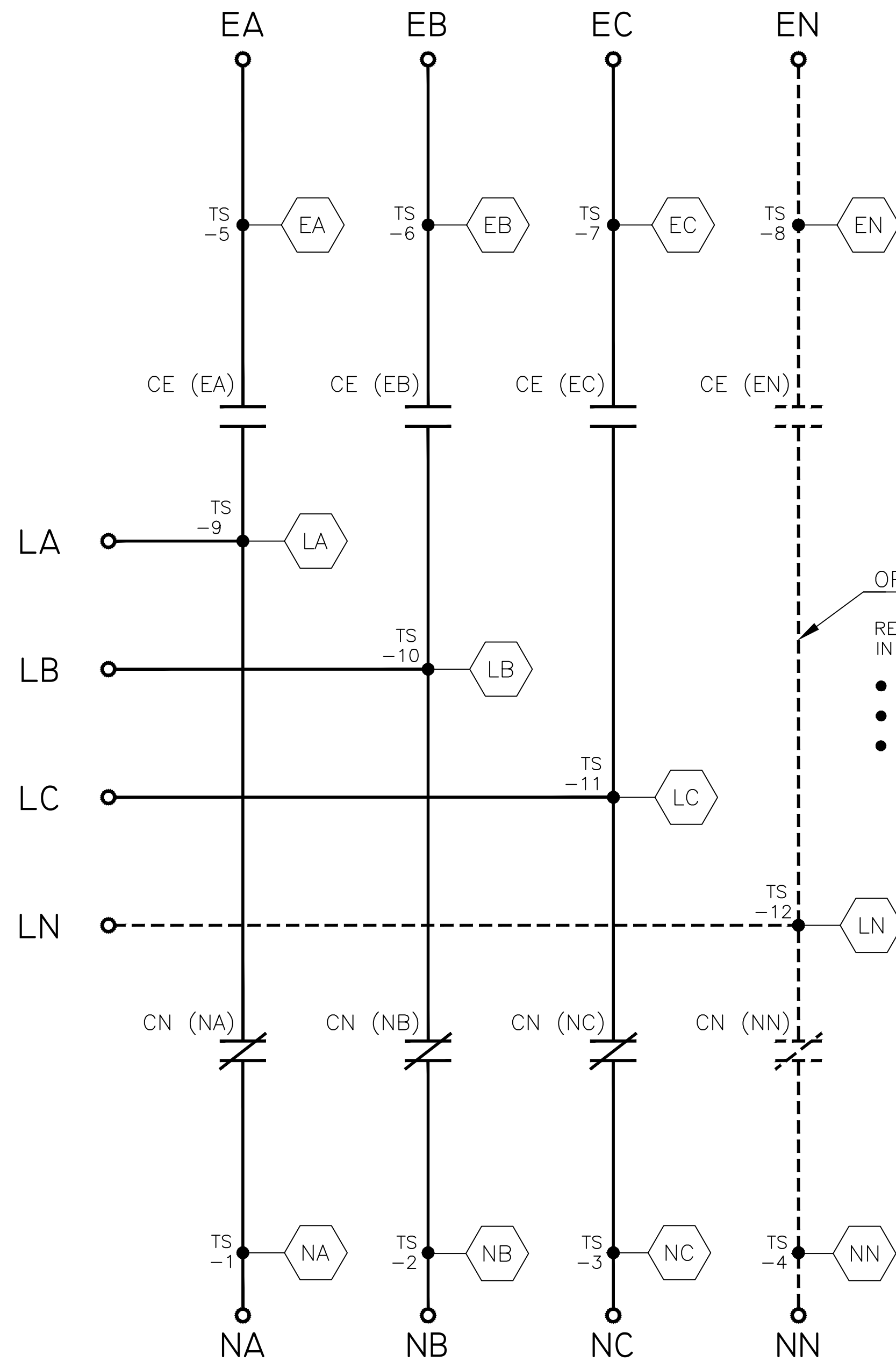
PROJECT NAME:		REV. TO SHEET	ECN NO.	BY	APP.	DATE
WIRING DIAGRAM						
4000 SER (G4ACTS/G4NCTS) 3PH 1000-3200 AMPS						
"G" FRAME, GROUP 5 CONTROLS						
DRAWN BY	BY	DATE	MANUFACTURING TOLERANCES TO BE IN ACCORDANCE WITH ASCO PROCEDURE MP-1-003. FOR PLASTIC PARTS SEE MP-1-005.	ASSEM. REF. NO.	COMPUTER GENERATED DRAWING	
CHECKED	BWM	6/05	PROPERTY OF ASCO POWER TECHNOLOGIES. USE PERMITTED FOR OUR WORK ONLY. ALL RIGHTS OF DESIGN OR INVENTION ARE RESERVED.		SCALE	SIZE DS
PROJECT APPROVAL					766511	
FINAL APPROVAL	SDH	6/05	ASCO® ASCO POWER TECHNOLOGIES, L.P. FLORHAM PARK, NEW JERSEY 07932 U.S.A.		DWG. NO.	766511
					DRAWING D	ECN NO. 236871 SHEET 2 OF 6

MAIN POWER POLES

TS OPERATOR CIRCUIT

EMERGENCY

NORMAL

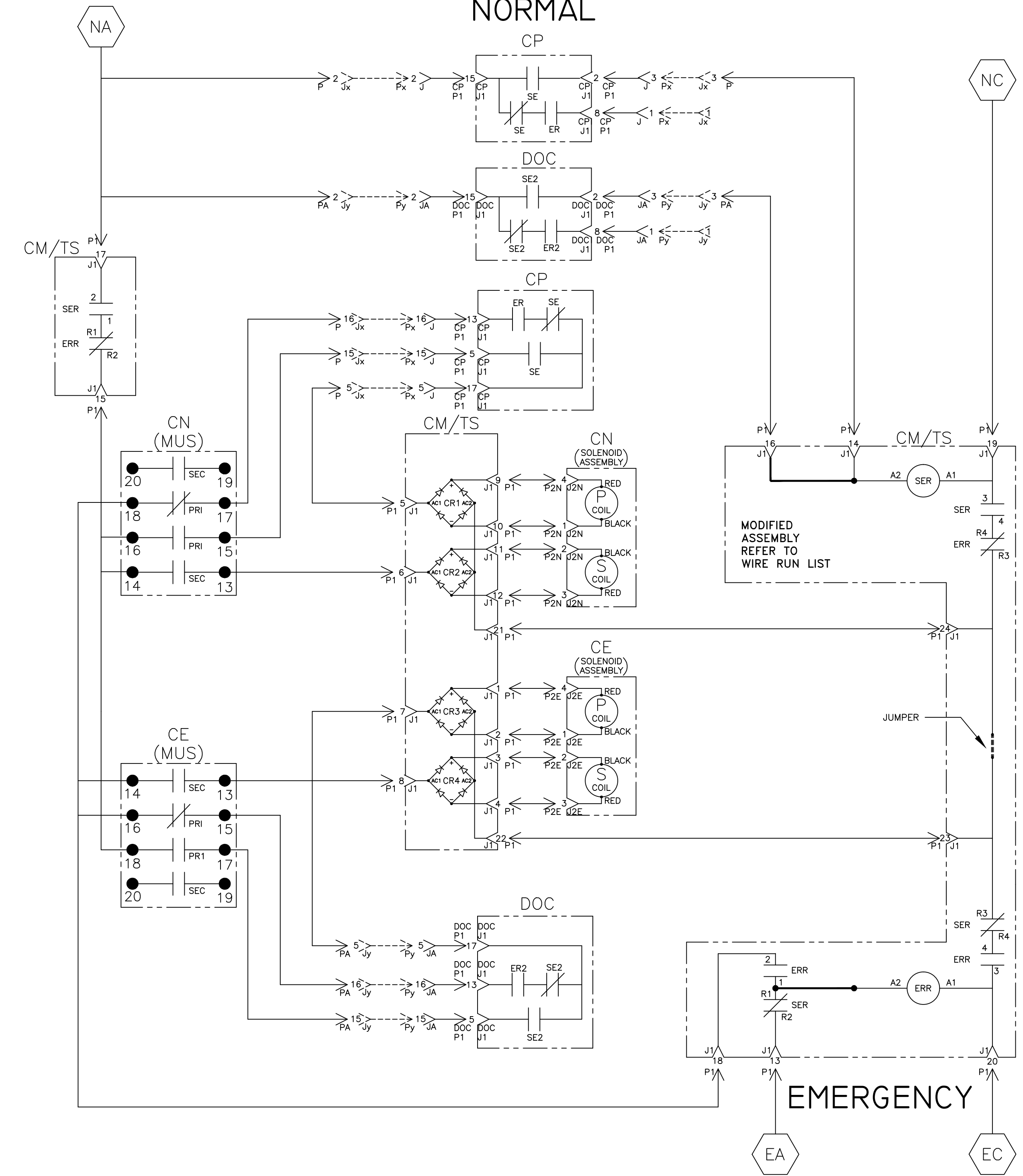


OPTIONAL NEUTRAL TYPES  
 REFER TO "EXPLANATION OF CATALOG NUMBER CODES" IN CATALOG NUMBER CHART ON SHEET 1.

- NONE
- SWITCHING
- SOLID BUS PLATE

NOTE:  
 ATS SHOWN CLOSED ON NORMAL SOURCE.

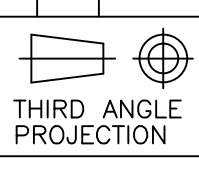
NORMAL



CN (MUS) CONTACTS				CE (MUS) CONTACTS			
SOLENOID POSITION				SOLENOID POSITION			
MUS	NORM	AFTER TDC *	OPEN	MUS	OPEN	AFTER TDC *	EMER
13-14	X	X	X	13-14	X	X	X
15-16	X	X	X	15-16	X	X	X
17-18	X	X	X	17-18	X	X	X
19-20	X	X	X	19-20	X	X	X

\* AFTER SOLENOID CORE PASSES THROUGH TOP DEAD CENTER POSITION.

PROJECT NAME:	WIRING DIAGRAM	REV. TO SHEET	ECN NO.	BY	APP.	DATE
4000 SER (G4ACTS/G4NCTS) 3PH 1000-3200 AMPS		236871		BWM		04/30/12
"G" FRAME, GROUP 5 CONTROLS		231586				04/14/11
		207659		MM	BK	02/23/06
		205131		JPB	JPB	7/12/05
		204825		BWM	SDH	6/05
		ISSUE				
DRAWN BY		DATE	MANUFACTURING TOLERANCES TO BE IN ACCORDANCE WITH ASCO PROCEDURE MP-1-003. FOR PLASTIC PARTS SEE MP-1-005.	ASSEM. REF. NO.	COMPUTER GENERATED DRAWING	
CHECKED		6/05	PROPERTY OF ASCO POWER TECHNOLOGIES. USE PERMITTED FOR OUR WORK ONLY. ALL RIGHTS OF DESIGN OR INVENTION ARE RESERVED.		SCALE	NO. SIZE DS
PROJECT APPROVAL					766511	
FINAL APPROVAL		SDH	ASCO POWER TECHNOLOGIES, L.P. FLORHAM PARK, NEW JERSEY 07932 U.S.A.		DWG. NO.	
					DRAWING D	ECN 236871
					REV.	3 OF 6

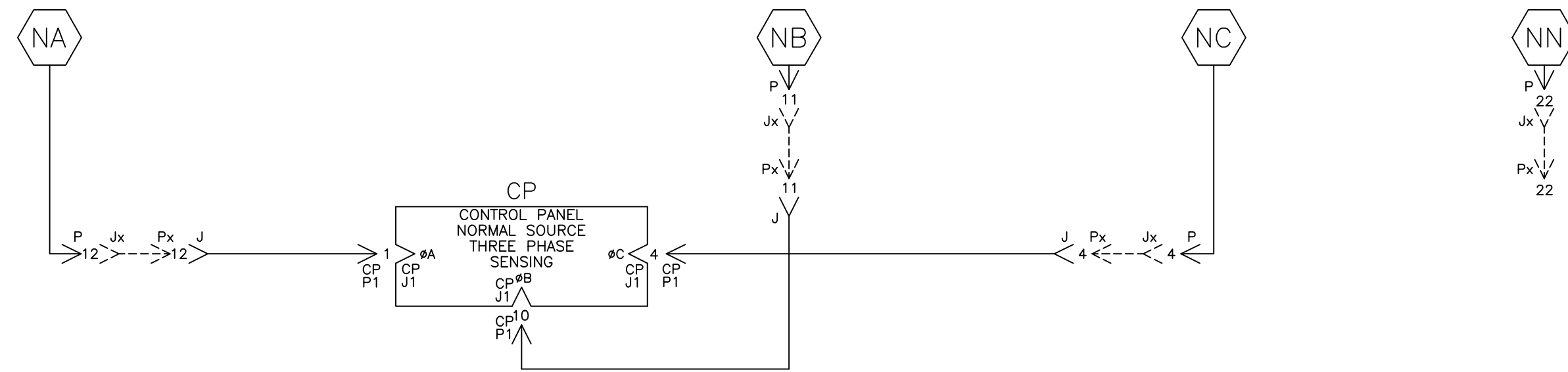


THIRD ANGLE PROJECTION

EMERGENCY SOURCE CIRCUITS

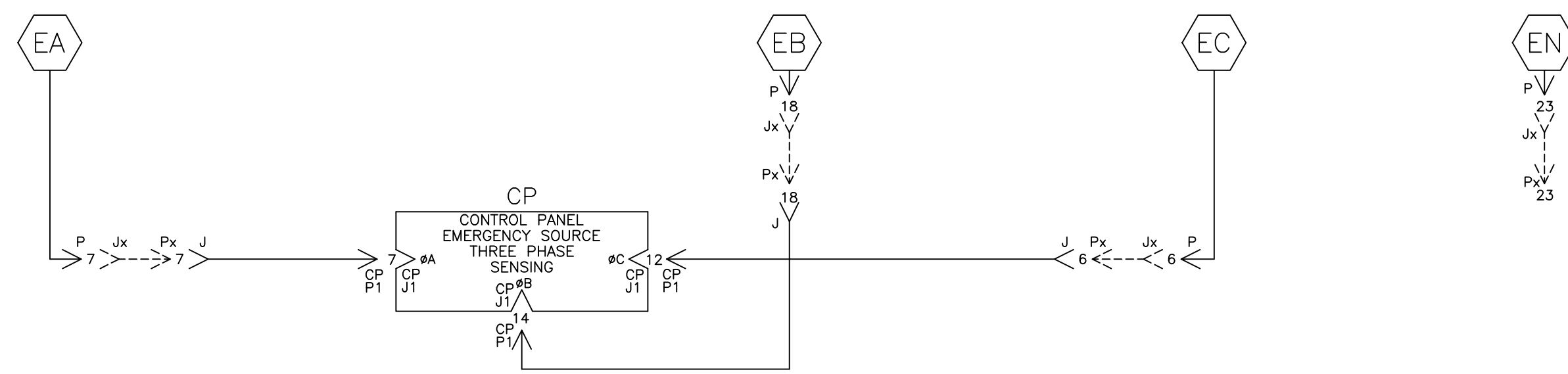
ADDITIONAL CIRCUITS

NORMAL



EMERGENCY SOURCE CIRCUITS

EMERGENCY



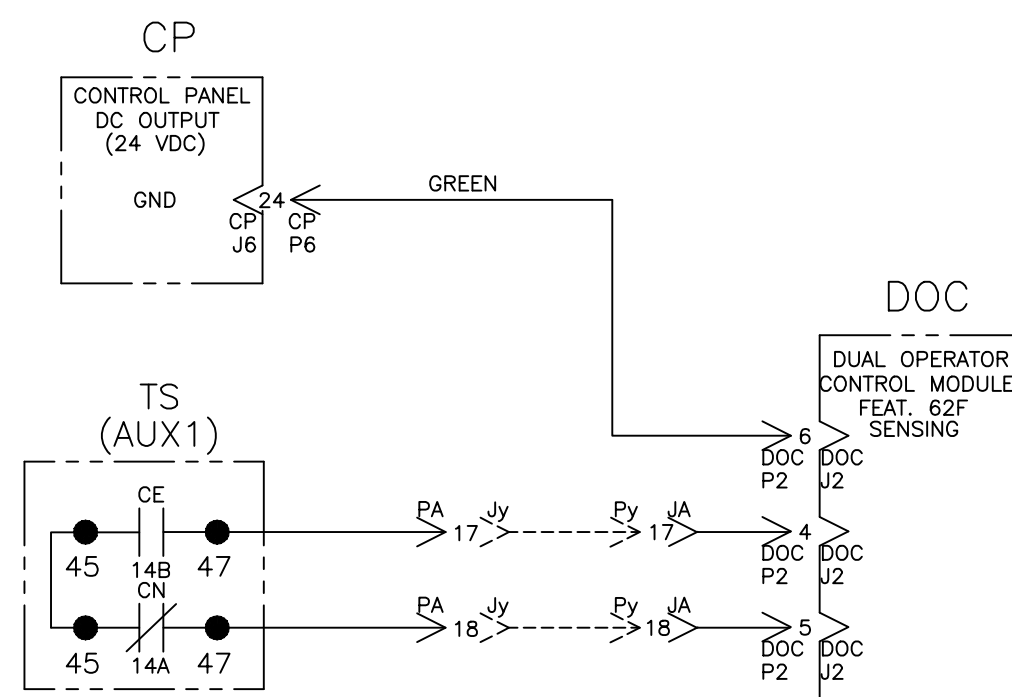
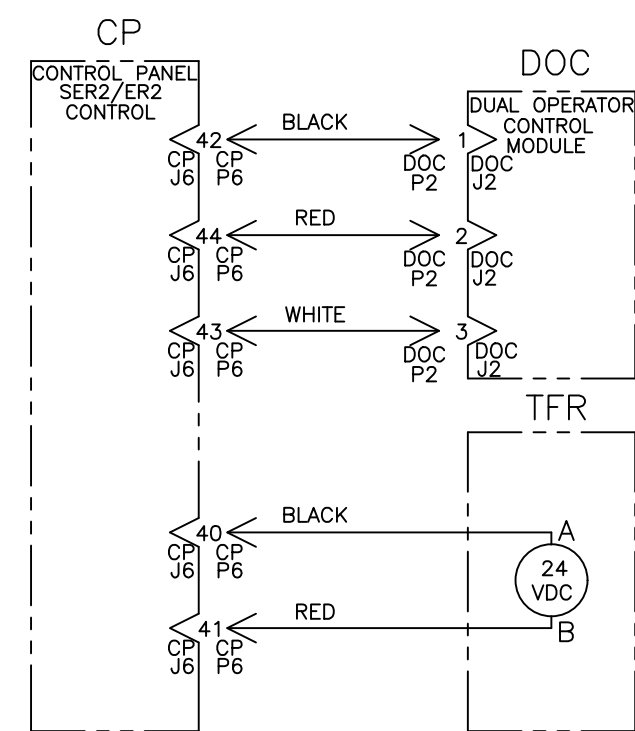
LOAD TERMINAL CIRCUITS

LOAD

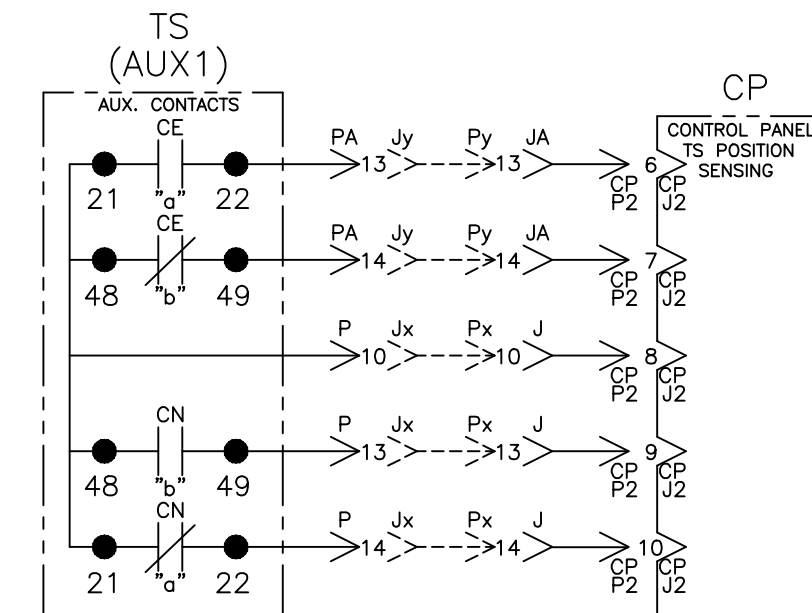


CONTROL SIGNALS & INDICATION

SER2/ER2 CONTROL



TS POSITION SENSING



D	236871	TR	BK	04/30/12
	SEE ECN			
C	231586	TR	BK	04/14/11
	SEE ECN			
B	207659	MM	BK	02/23/06
	SEE ECN			
A	205131	JPB	JPB	7/12/05
	SEE ECN			
-	204825	BWM	SDH	6/05
	ISSUE			

PROJECT NAME:		REV. TO SHEET	ECN NO.	BY	APP.	DATE
WIRING DIAGRAM						
4000 SER (G4ACTS/G4NCTS) 3PH 1000-3200 AMPS						
"G" FRAME, GROUP 5 CONTROLS						
DRAWN BY		DATE	MANUFACTURING TOLERANCES TO BE IN ACCORDANCE WITH ASCO PROCEDURE MP-1-003. FOR PLASTIC PARTS SEE MP-1-005.	ASSEM. REF. NO.	SCALE	SIZE
CHECKED		6/05			DS	
PROJECT APPROVAL			PROPERTY OF ASCO POWER TECHNOLOGIES. USE PERMITTED FOR OUR WORK ONLY. ALL RIGHTS OF DESIGN OR INVENTION ARE RESERVED.		DWG. NO.	
FINAL APPROVAL		SDH			766511	
		6/05			DRIVING D	ECN 236871
						4 OF 6



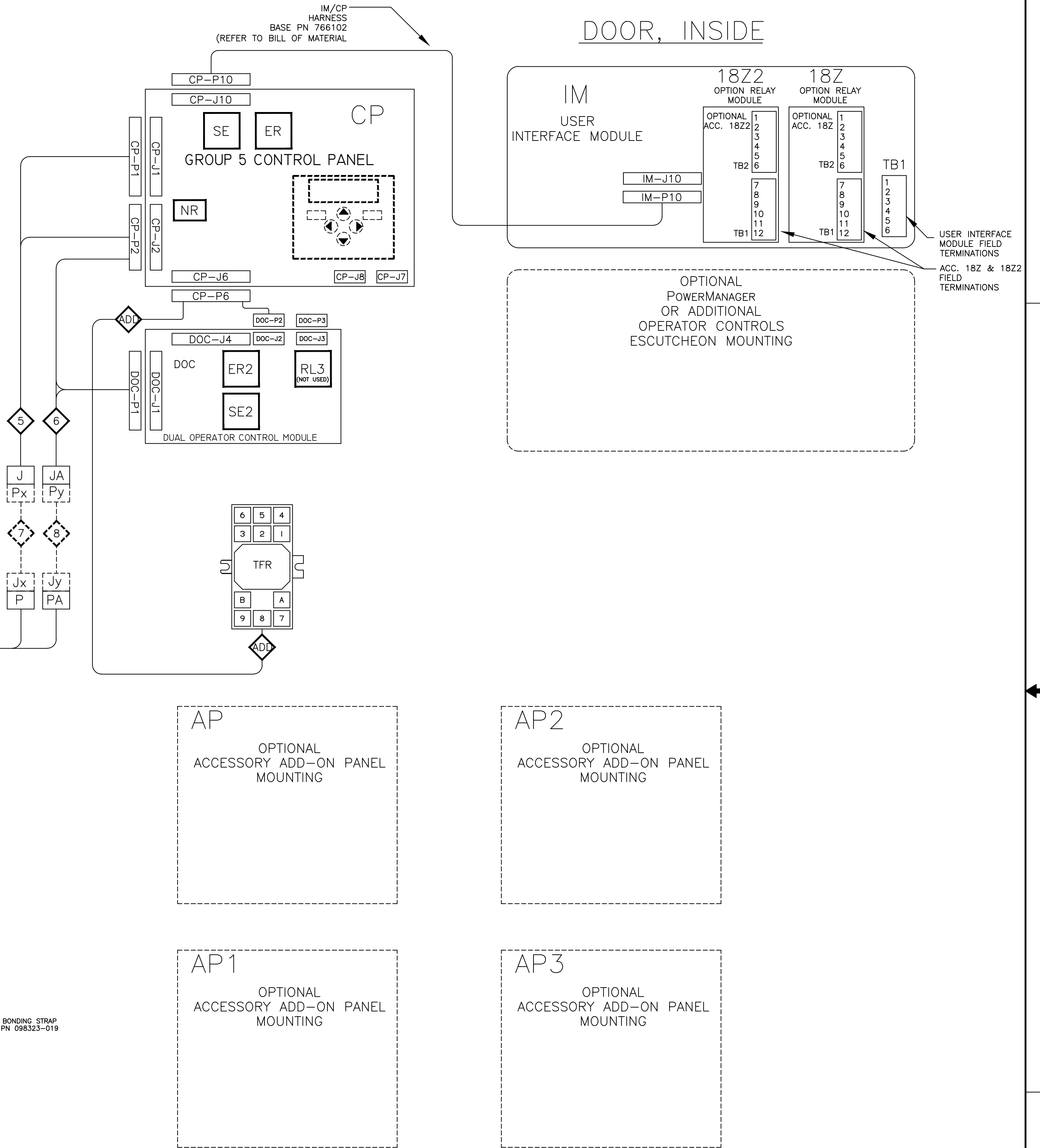
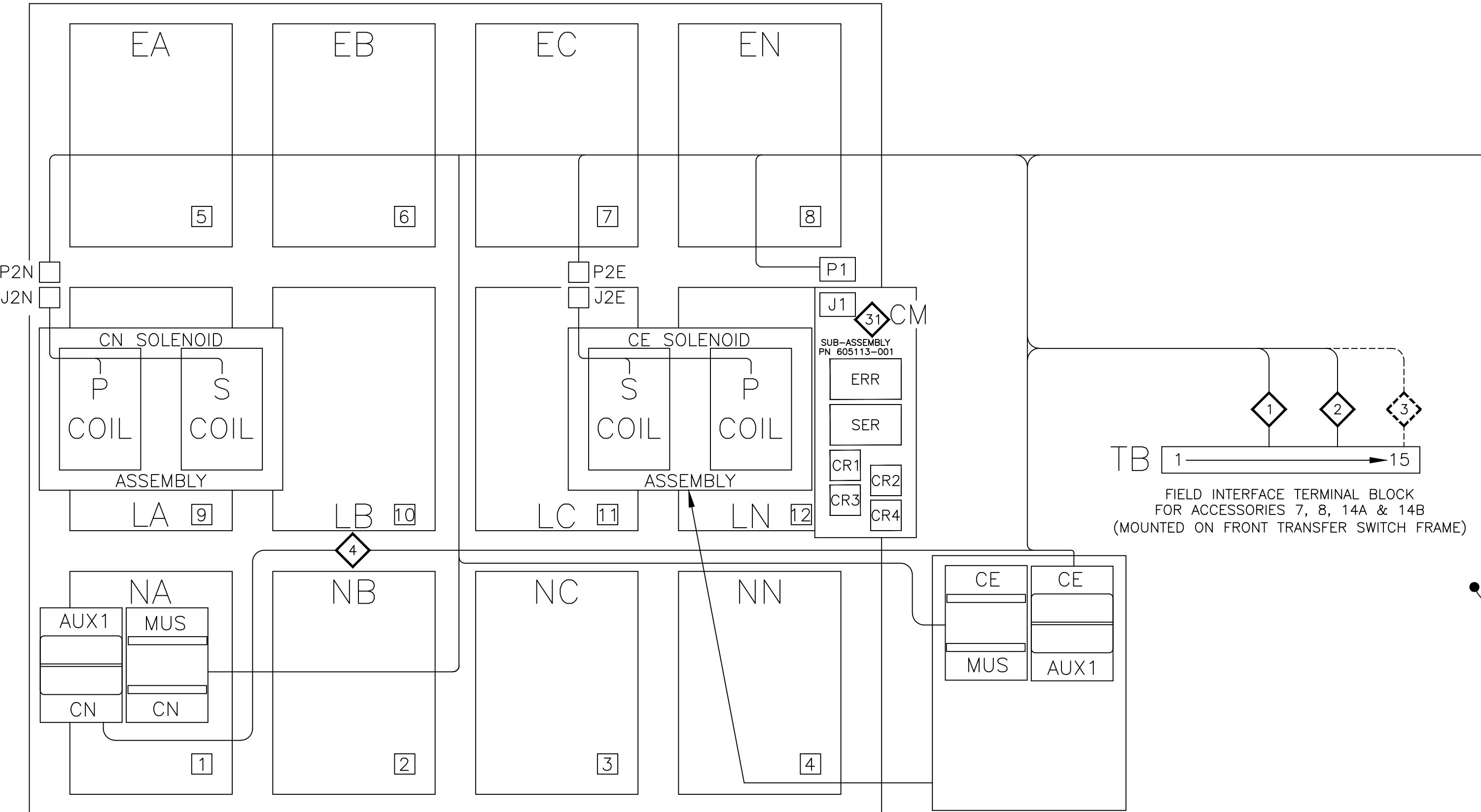


PHYSICAL DIAGRAM

ENCLOSURE

DOOR, INSIDE

TS (TRANSFER SWITCH)

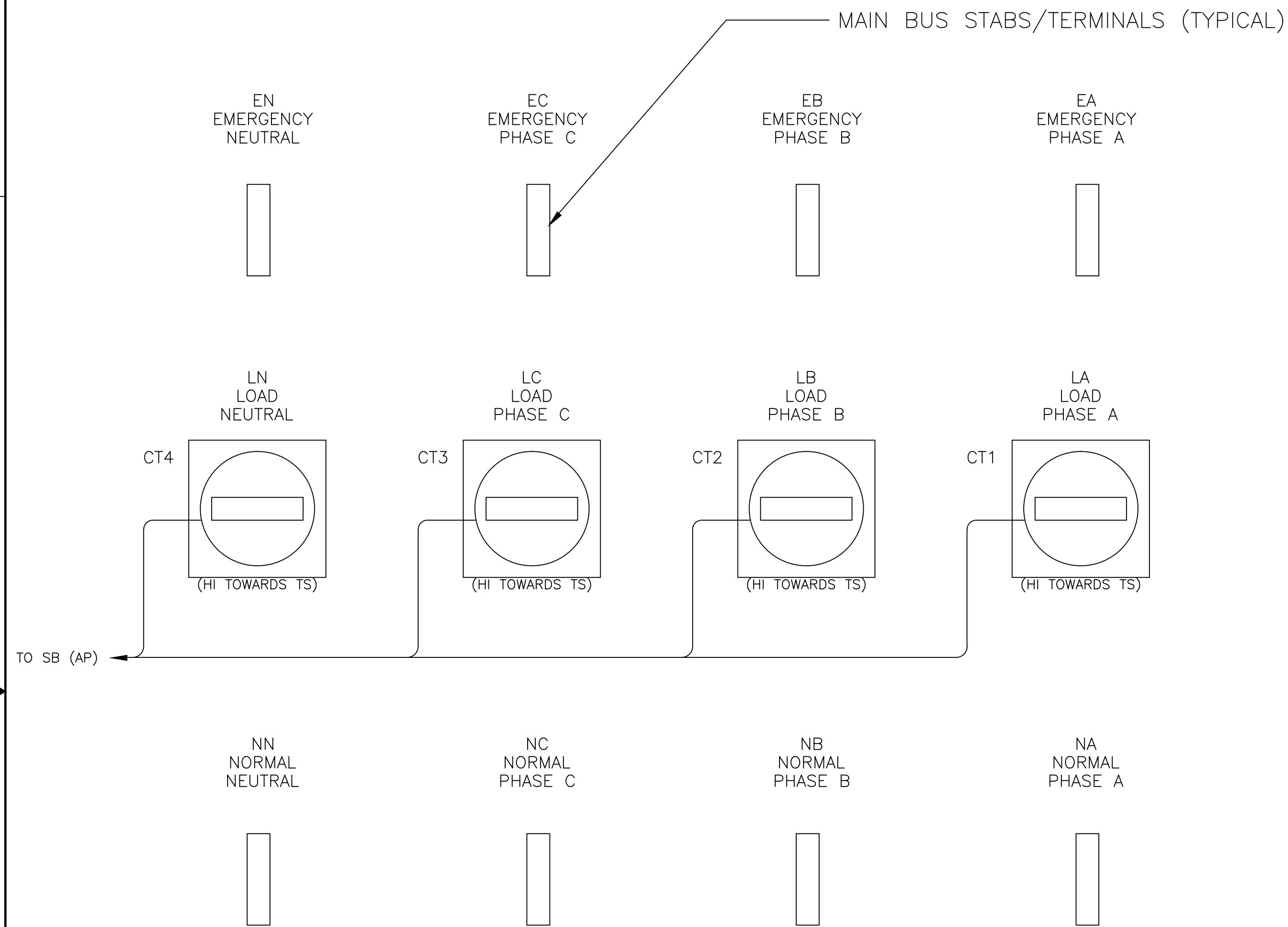


D	236871	TR	BK	04/30/12
	SEE ECN			
C	231586	TR	BK	04/14/11
	SEE ECN			
B	207659	MM	BK	02/23/06
	SEE ECN			
A	205131	JPB	JPB	7/12/05
	SEE ECN			
-	204825	BWM	SDH	6/05
	ISSUE			

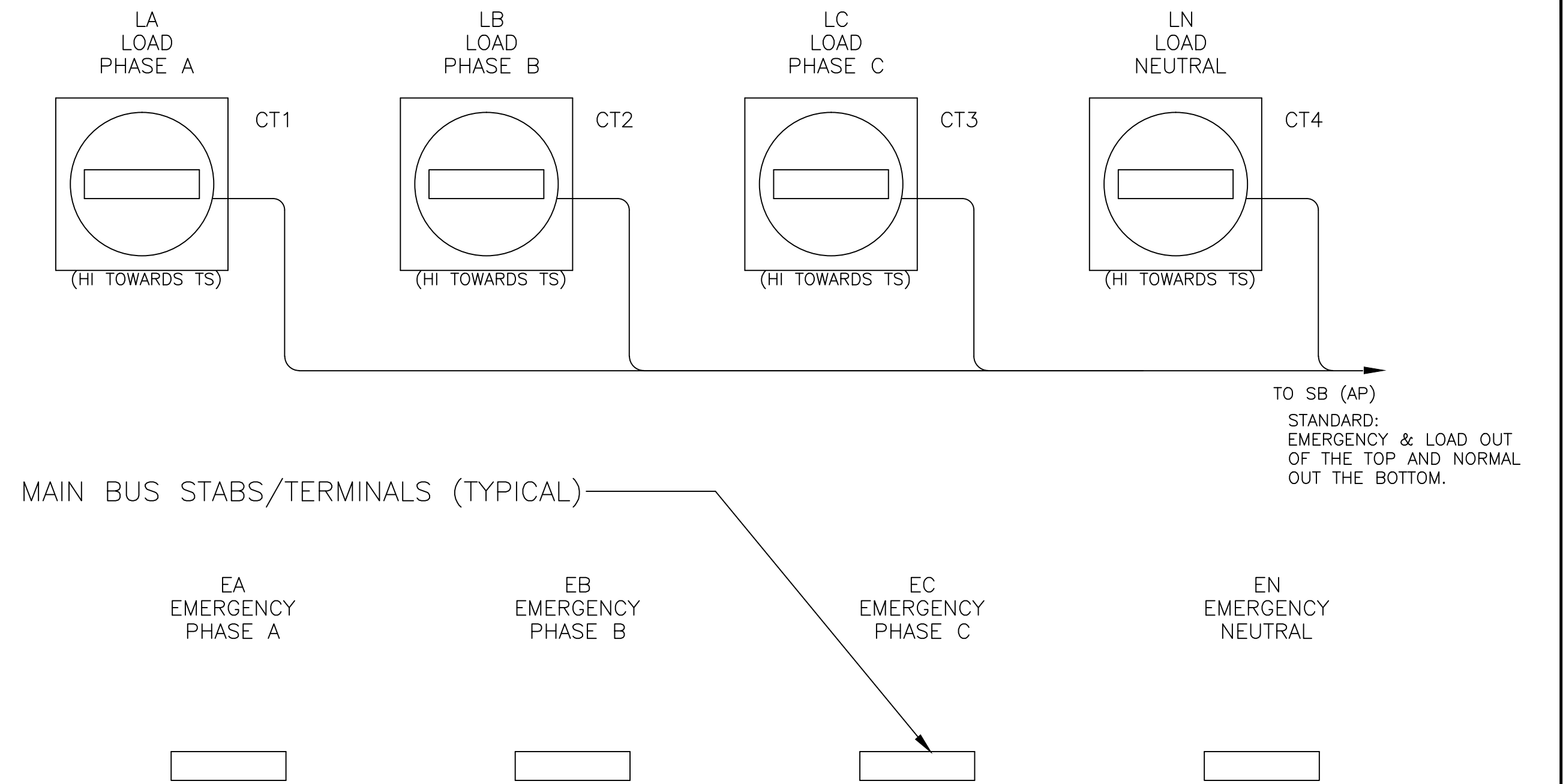
PROJECT NAME:		REV. TO SHEET	ECN NO.	BY	APP.	DATE
WIRING DIAGRAM						
4000 SER (G4ACTS/G4NCTS) 3PH 1000-3200 AMPS						
"G" FRAME, GROUP 5 CONTROLS						
BY	DATE	MANUFACTURING TOLERANCES TO BE IN ACCORDANCE WITH ASCO PROCEDURE MP-1-003. FOR PLASTIC PARTS SEE MP-1-005.		ASSEM. REF. NO.	SCALE	NONE
DRAWN BY	BWM	6/05			SIZE	DS
CHECKED			PROPERTY OF ASCO POWER TECHNOLOGIES. USE PERMITTED FOR OUR WORK ONLY. ALL RIGHTS OF DESIGN OR INVENTION ARE RESERVED.		DWG. NO.	
PROJECT APPROVAL					766511	
FINAL APPROVAL	SDH	6/05	ASCO POWER TECHNOLOGIES, L.P. FLORHAM PARK, NEW JERSEY 07932 U.S.A.		DRAWING D	ECN NO. 236871
						SHEET 5 OF 6

PHYSICAL DIAGRAM (CONTINUED)

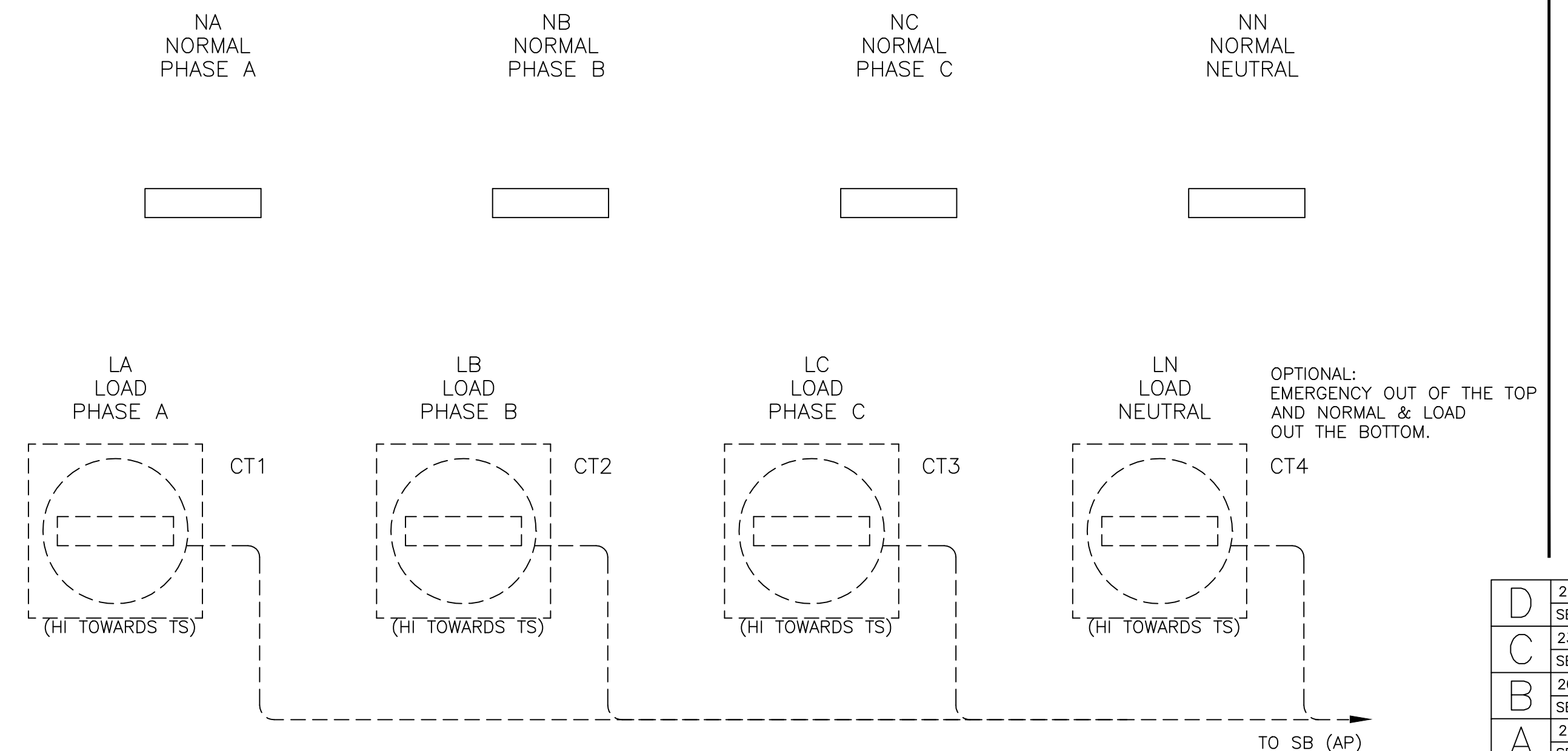
REAR CONNECTED SWITCH  
1000 - 3200 AMP. TS REAR VIEW



FRONT CONNECTED SWITCH  
1000 - 2000 AMP. TS TOP VIEW



BOTTOM VIEW

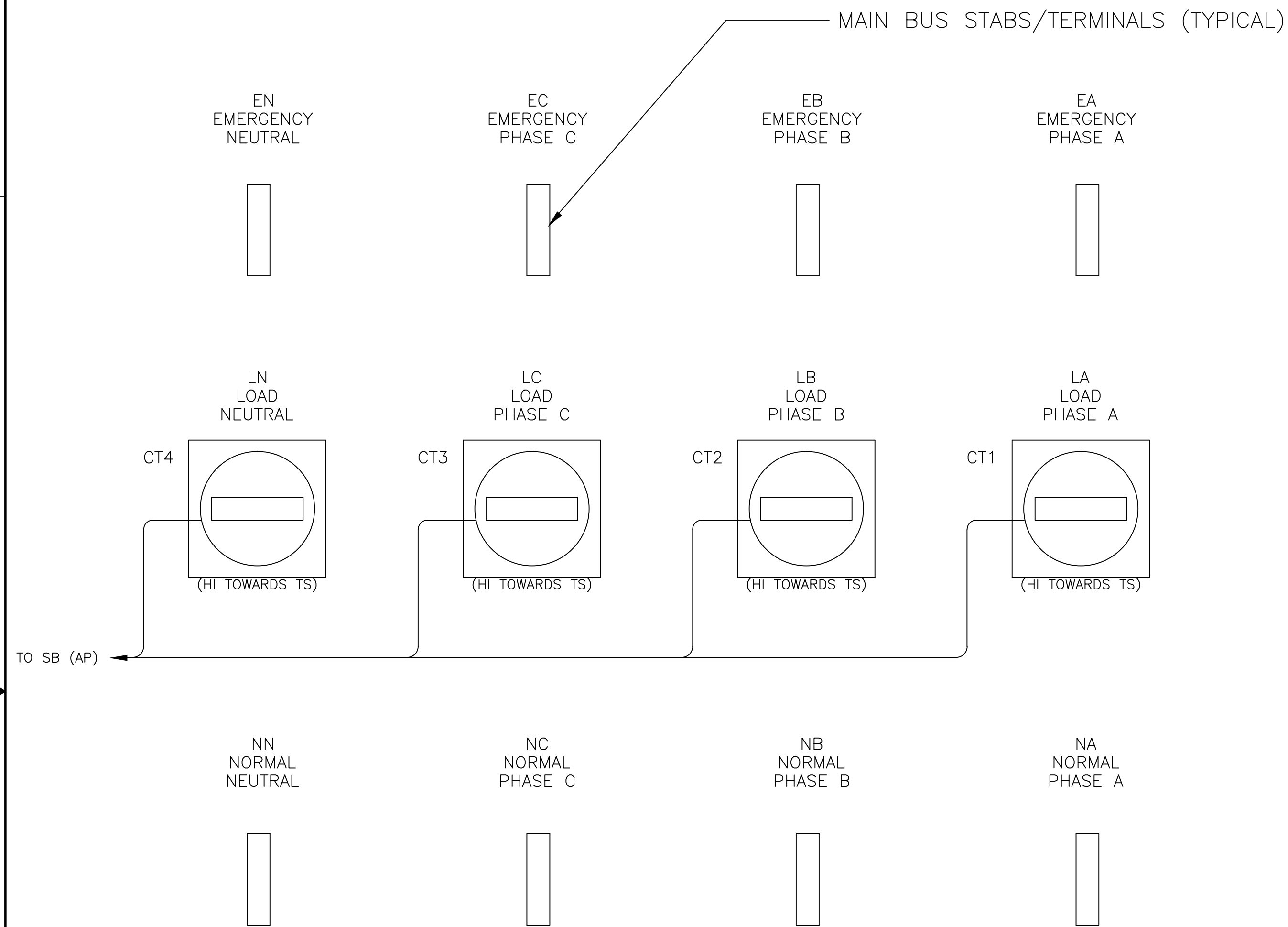


D	236871	TR	BK	04/30/12
	SEE ECN			
C	231586	TR	BK	04/14/11
	SEE ECN			
B	207659	MM	BK	02/23/06
	SEE ECN			
A	205131	JPB	JPB	7/12/05
	SEE ECN			
-	204825	BWM	SDH	6/05
	ISSUE			

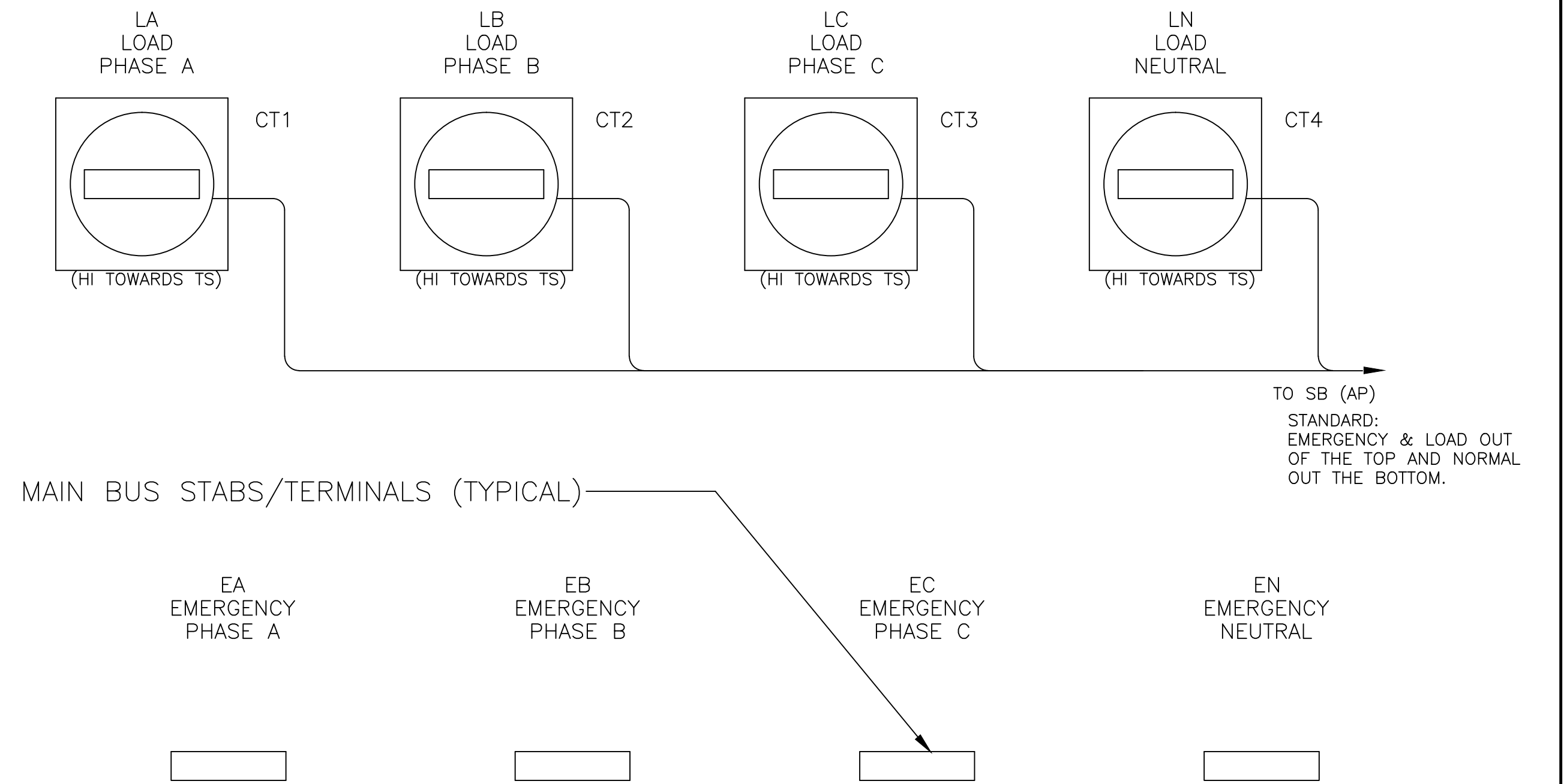
PROJECT NAME:		REV. TO SHEET	ECN NO.	BY	APP.	DATE
WIRING DIAGRAM						
4000 SER (G4ACTS/G4NCTS) 3PH 1000-3200 AMPS						
"G" FRAME, GROUP 5 CONTROLS						
DRAWN BY	BY	DATE	MANUFACTURING TOLERANCES TO BE IN ACCORDANCE WITH ASCO PROCEDURE MP-1-003. FOR PLASTIC PARTS SEE MP-1-035		ASSEM. REF. NO.	COMPUTER GENERATED DRAWING
CHECKED	BWM	6/05				SCALE NONE SIZE DS
PROJECT APPROVAL			PROPERTY OF ASCO POWER TECHNOLOGIES. USE PERMITTED FOR OUR WORK ONLY. ALL RIGHTS OF DESIGN OR INVENTION ARE RESERVED.			DWG. NO. 766511
FINAL APPROVAL	SDH	6/05	ASCO POWER TECHNOLOGIES, L.P. FLORHAM PARK, NEW JERSEY 07932 U.S.A.			DRAWING D ECN 236871 SHEET 6 OF 7

PHYSICAL DIAGRAM (CONTINUED)

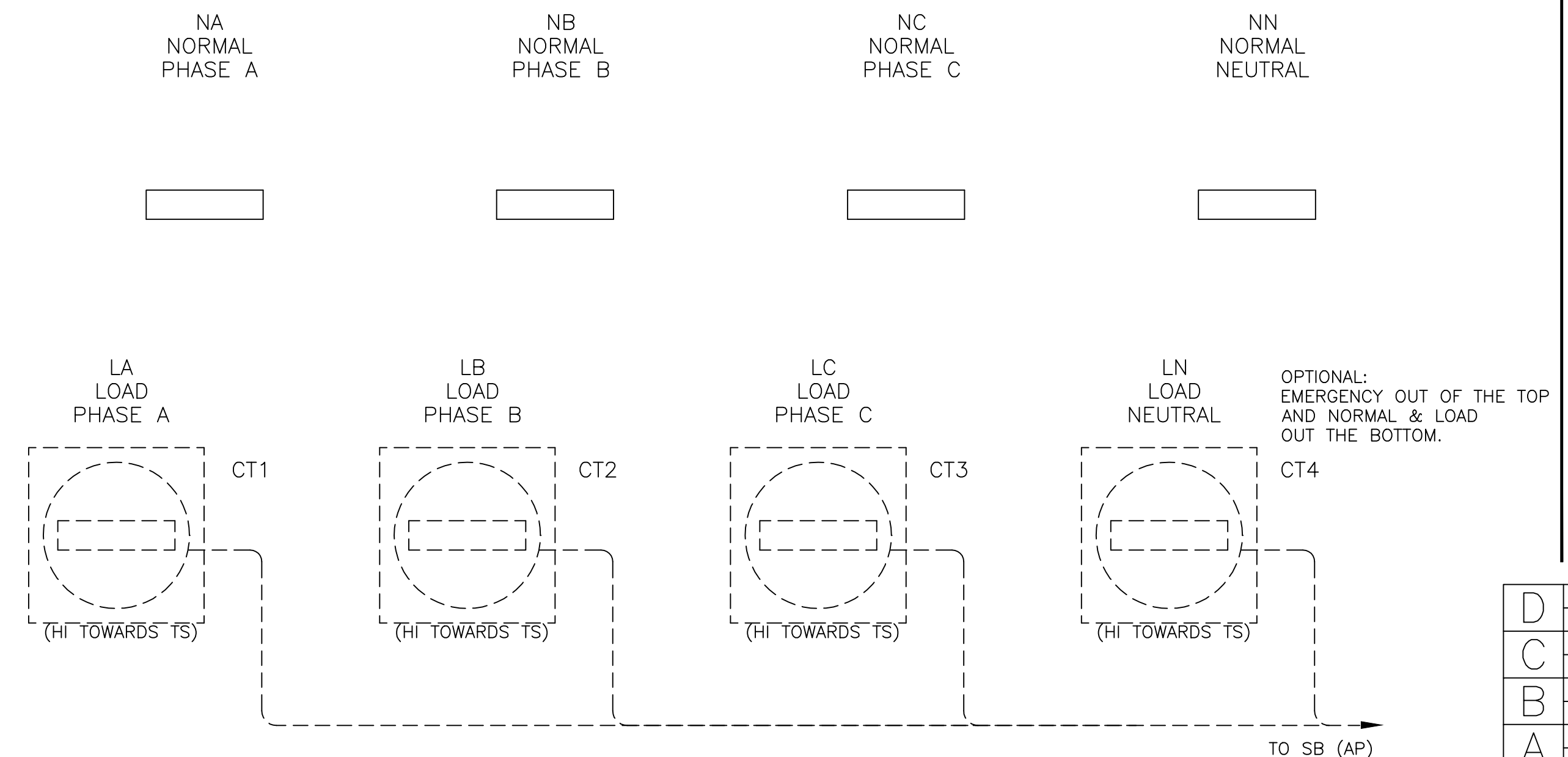
REAR CONNECTED SWITCH  
1000 - 3200 AMP. TS REAR VIEW



FRONT CONNECTED SWITCH  
1000 - 2000 AMP. TS TOP VIEW



BOTTOM VIEW



D	236871	TR	BK	04/30/12
	SEE ECN			
C	231586	TR	BK	04/14/11
	SEE ECN			
B	207659	MM	BK	02/23/06
	SEE ECN			
A	205131	JPB	JPB	7/12/05
	SEE ECN			
-	204825	BWM	SDH	6/05
	ISSUE			

PROJECT NAME:		REV. TO SHEET	ECN NO.	BY	APP.	DATE
WIRING DIAGRAM						
4000 SER (G4ACTS/G4NCTS) 3PH 1000-3200 AMPS						
"G" FRAME, GROUP 5 CONTROLS						
DRAWN BY	BY	DATE	MANUFACTURING TOLERANCES TO BE IN ACCORDANCE WITH ASCO PROCEDURE MP-1-003. FOR PLASTIC PARTS SEE MP-1-035		ASSEM. REF. NO.	COMPUTER GENERATED DRAWING
CHECKED	BWM	6/05				SCALE NONE SIZE DS
PROJECT APPROVAL			PROPERTY OF ASCO POWER TECHNOLOGIES. USE PERMITTED FOR OUR WORK ONLY. ALL RIGHTS OF DESIGN OR INVENTION ARE RESERVED.			DWG. NO. 766511
FINAL APPROVAL	SDH	6/05	ASCO POWER TECHNOLOGIES, L.P. FLORHAM PARK, NEW JERSEY 07932 U.S.A.			DRAWING D ECN 236871 SHEET 6 OF 7