

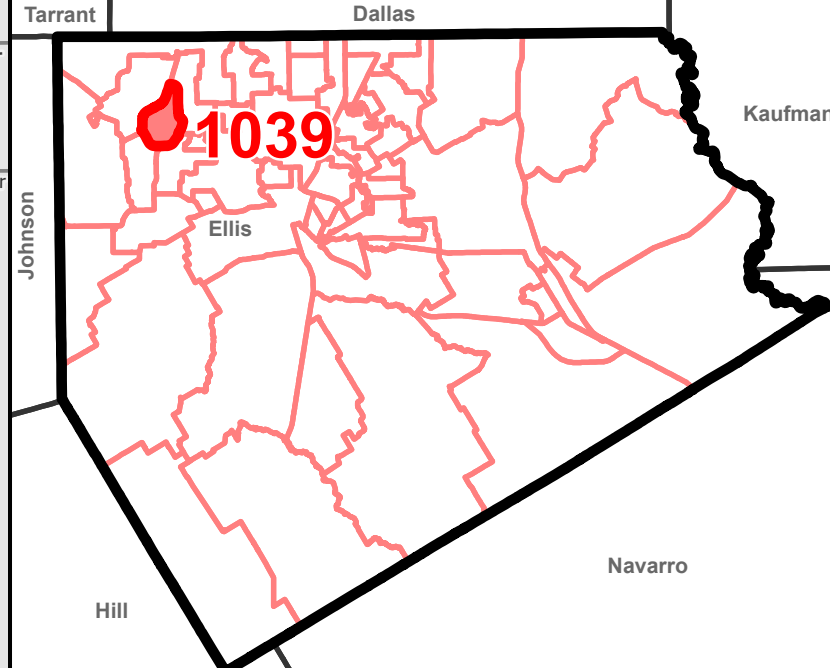


Election Precinct: 1039

Effective January 1, 2022
US Congress (USREP): US6
State Board of Education (SBE): S14
State Senate (STSEN): S22
State Representative (STREP): R10
County Commissioner (COMM): CO3
JP-Constable (JP): JP4
Precinct Chair: 039

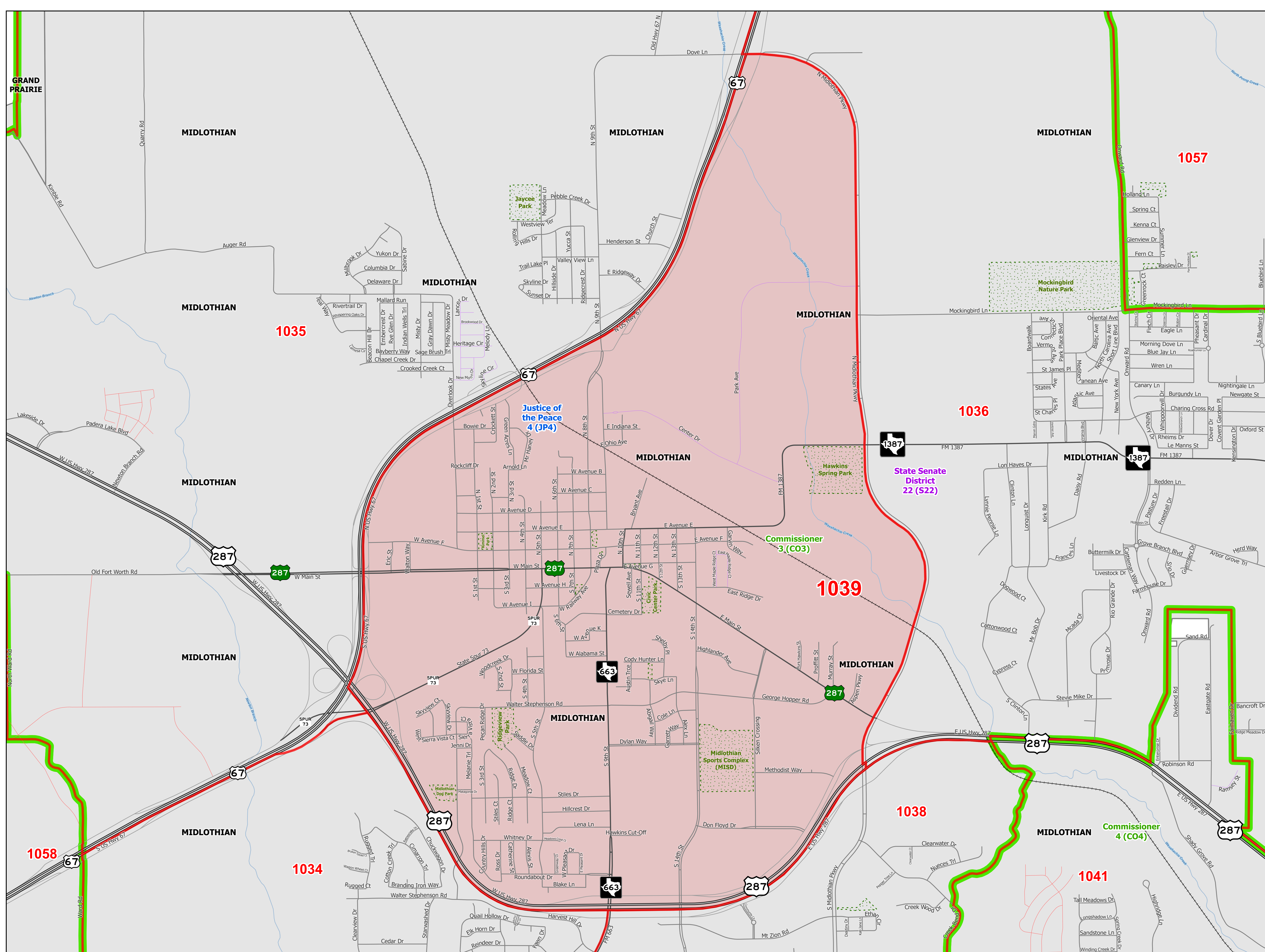
- Election Precincts**
- Precinct of Interest
 - Precinct Outlines
- US Congress (USREP)**
- US Congressional District 6 covers the entire county
- State Board of Education (SBE)**
- State Board of Education District 14 covers the entire county
- State Senate (STSEN)**
- State Senate District 22 (S22)
- State Representative (STREP)**
- State Representative District 10 covers the entire county
- Commissioner Precincts (COMM)**
- Commissioner 3 (CO3)
 - Commissioner 4 (CO4)
- JP-Constable Precincts (JP)**
- JP4
- Ellis County**
- Incorporated Municipality

For more detailed information please refer to the interactive web maps available on the Ellis County website (URL below)



1 inch equals
844 feet or 0.16 miles
when printed at 24" X 36"

Ellis County Engineering Dept: GIS & 911 Addressing
109 S Jackson St, Suite 114, Waxahachie, TX 75165
Website: <https://www.co.ellis.tx.us/65>
Email: GIS@co.ellis.tx.us
Date Printed: Tuesday, November 7, 2023



Disclaimer: This information is designed for illustrative purposes only. The features depicted here are generalized. More site-specific studies may be required to draw accurate conclusions. Every effort is made to ensure the information displayed here is accurate. However, Ellis County makes no claims to its accuracy or completeness. **Spatial Reference:** PCS: NAD 1983 StatePlane Texas North Central FIPS 4202 Feet; GCS: GCS North American 1983; Datum: North American 1983; Projection: Lambert Conformal Conic; Map Units: Foot US **File Path:** G:\GIS\Maps\Templates\Ellis County Layouts\00 Pro Working\EC Pro Templates\EC Pro Templates.aprx **Layout Name:** Layout DDP Election Precincts 24x36 **Exported By:** rebecca.charles