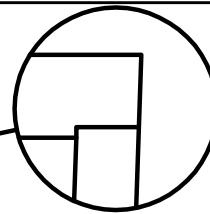
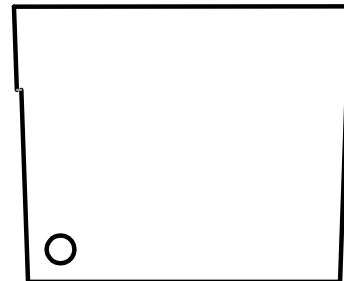


SECTION A-A



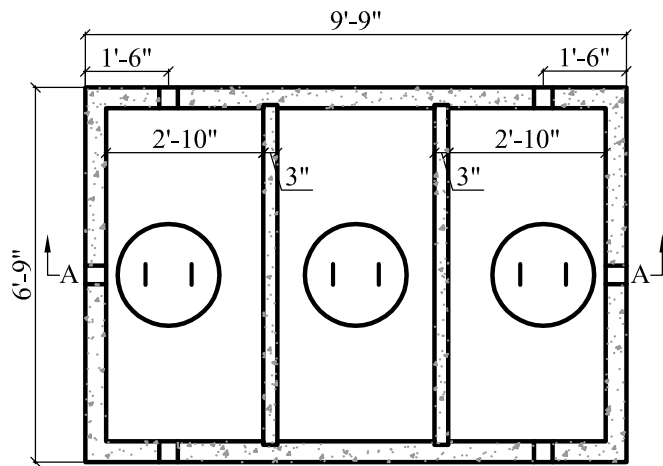
TOP SEAM DETAIL



SIDE VIEW OF
DROP IN BAFFLE

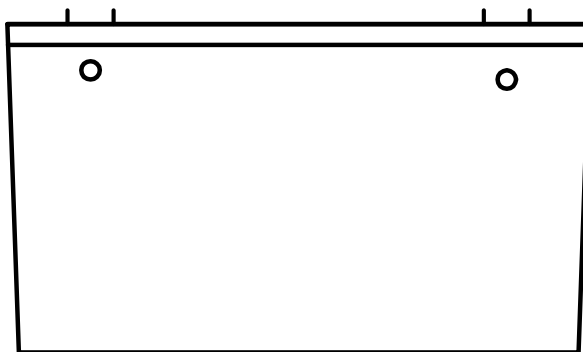
NOTES:
SECOND BAFFLE IS IN REVERSED
POSITION.

BAFFLES MAY VARY ACCORDING TO
LOCALITIES.

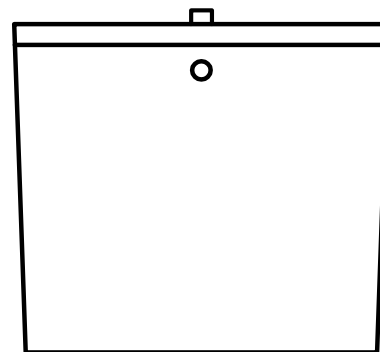


PLAN VIEW

NOTES:
1. CONCRETE STRENGTH = MIN. 4500 PSI
2. #4 REBAR ON 1' CENTER
3. "POLYLOK" PIPE SEALS CAST IN TANK
4. MASTIC SEALANT IN TANK JOINT
5. TANKS CAN BE MODIFIED UPON
REQUEST
6. DROP IN BAFFLES MADE TO
SPECIFICATIONS



FRONT VIEW



SIDE VIEW

APPROX. WEIGHT:
TOP = 3,745 lb
BOTTOM = 11,235 lb
TOTAL = 14,980 lb

GAL. PER IN = 33.5
ACTUAL GAL. TO OUTLET = 1,642
FULL CAPACITY = 2,043



CTJAMISON.COM
PH: 540-483-5944

1,500 Gal. TS OWS 3 COMP

OIL/WATER SEPARATOR

Scale
Not To Scale

Date
Feb 2016