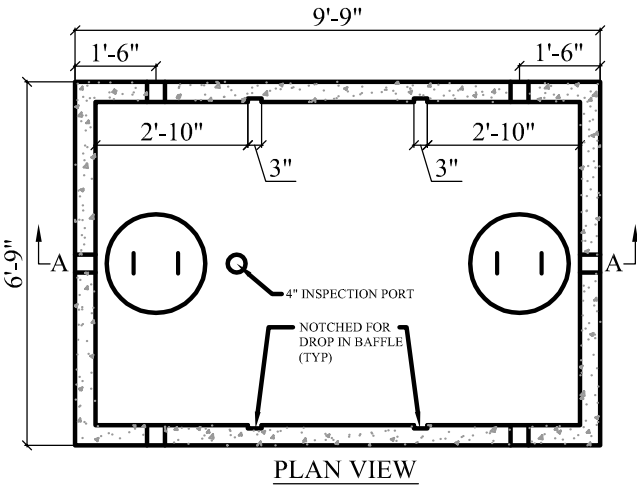


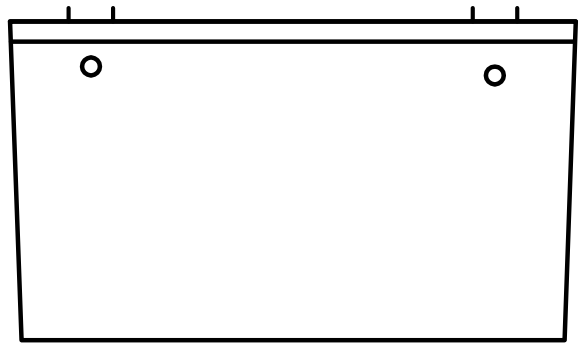
SECTION A-A

TOP SEAM DETAIL

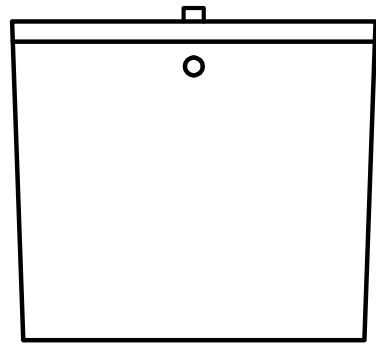


PLAN VIEW

- NOTES:
1. CONCRETE STRENGTH = MIN. 4500 PSI
 2. #4 REBAR ON 1' CENTER
 3. "POLYLOK" PIPE SEALS CAST IN TANK
 4. MASTIC SEALANT IN TANK JOINT
 5. TANKS CAN BE MODIFIED UPON REQUEST
 6. DROP IN BAFFLES MADE TO SPECIFICATIONS



FRONT VIEW



SIDE VIEW

APPROX. WEIGHT:
 TOP = 3,745 lb
 BOTTOM = 11,235 lb
 TOTAL = 14,980 lb

GAL. PER IN = 33.5
 ACTUAL GAL. TO OUTLET = 1,642
 FULL CAPACITY = 2,043



CTJAMISON.COM
 PH: 540-483-5944

1,500 Gal. Top Seam Tank

Date	Scale	
Feb 2016	Not To Scale	