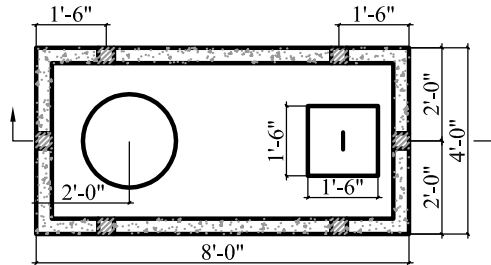


SECTION A-A

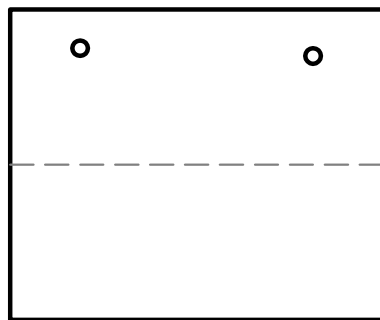
KEYWAY DETAIL



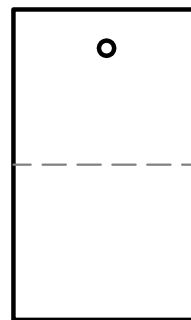
PLAN VIEW

NOTES:

1. CONCRETE STRENGTH = MIN. 4500 PSI
2. STRUCTURAL FIBER THROUGHOUT
3. "POLYLOK" PIPE SEALS CAST IN TANK
4. MASTIC SEALANT IN TANK JOINT
5. TANKS CAN BE MODIFIED UPON REQUEST



FRONT VIEW



SIDE VIEW

APPROX. WEIGHT:

TOP = 3,745 lb
 BOTTOM = 3,745 lb
 TOTAL = 7,490 lb

GAL. PER IN = 16.36
 ACTUAL GAL. TO OUTLET = 1,047
 FULL CAPACITY = 1,161



CTJAMISON.COM

PH: 540-483-5944

1,000 Gal. M.S. Pump Chamber

Date

Feb 2016

Scale

Not To Scale