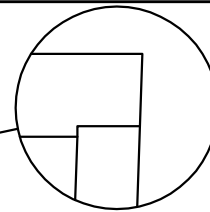
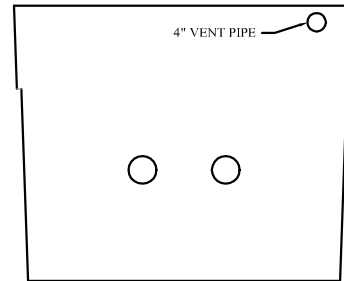


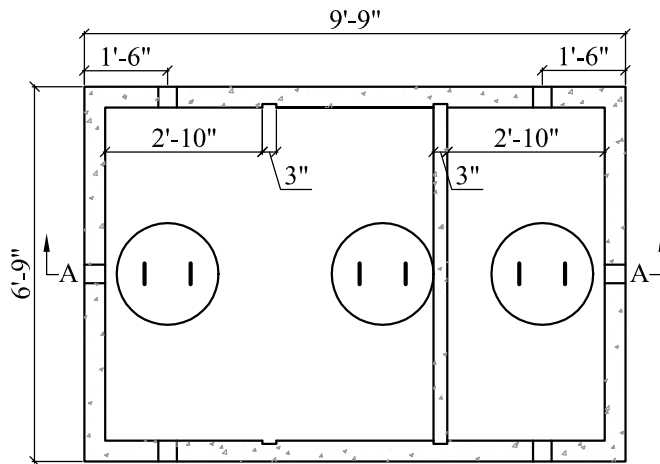
SECTION A-A



TOP SEAM DETAIL



SIDE VIEW OF  
DROP IN BAFFLE



PLAN VIEW

NOTES:

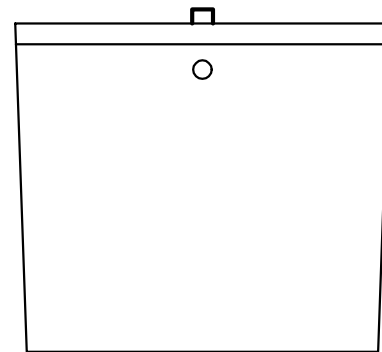
1. CONCRETE STRENGTH = MIN. 4500 PSI
2. #4 REBAR ON 1' CENTER
3. "POLYLOK" PIPE SEALS CAST IN TANK
4. MASTIC SEALANT IN TANK JOINT
5. TANKS CAN BE MODIFIED UPON REQUEST
6. DROP IN BAFFLES MADE TO WESTERN VIRGINIA WATER AUTHORITY SPECIFICATIONS
7. CONTRACTOR RESPONSIBLE FOR GROUTING 6" TEE'S IN BAFFLE WALL



FRONT VIEW

APPROX. WEIGHT:

TOP = 3,745 lb  
 BOTTOM = 11,235 lb  
 TOTAL = 14,980 lb



SIDE VIEW

GAL. PER IN = 33.5  
 ACTUAL GAL. TO OUTLET = 1,642  
 FULL CAPACITY = 2,043

**CT JAMISON SEPTIC**

CALLAWAY, VIRGINIA  
 PH: 540-483-5944

1,500 Gal. TS WWA Grease Interceptor

OIL/WATER SEPARATOR

Scale  
 Not To Scale

Date  
 June 16, 2017