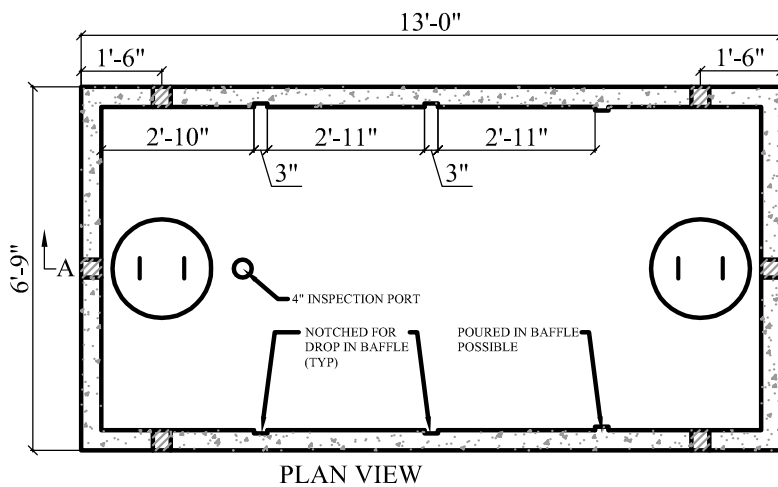
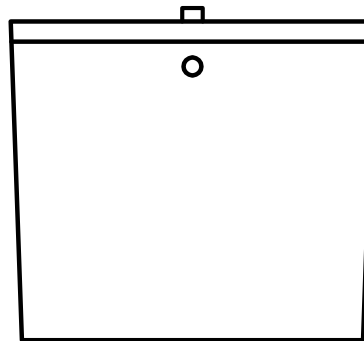
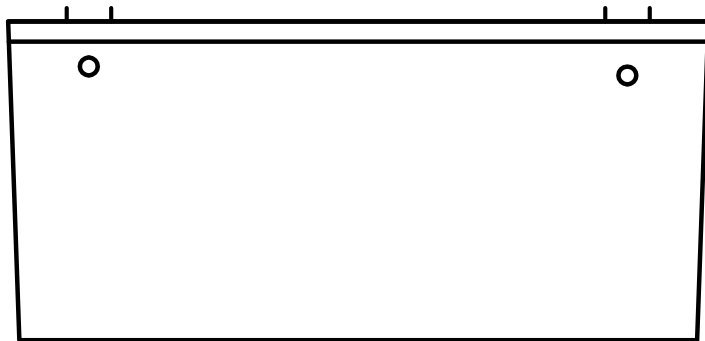


TOP SEAM DETAIL



NOTES:

1. CONCRETE STRENGTH = MIN. 4500 PSI
2. #4 REBAR ON 1' CENTER
3. "POLYLOK" PIPE SEALS CAST IN TANK
4. MASTIC SEALANT IN TANK JOINT
5. TANKS CAN BE MODIFIED UPON REQUEST
6. DROP IN BAFFLES MADE TO SPECIFICATIONS
7. POURED IN BAFFLE ON OUTLET END POSSIBLE



APPROX. WEIGHT:

TOP = 4,868 lb
 BOTTOM = 13,857 lb
 TOTAL = 18,725 lb

GAL. PER IN = 44.5
 ACTUAL GAL. TO OUTLET = 2,181
 FULL CAPACITY = 2,715



CTJAMISON.COM

PH: 540-483-5944

2,000 Gal. Top Seam Tank

Date
Feb 2016

Scale
Not To Scale