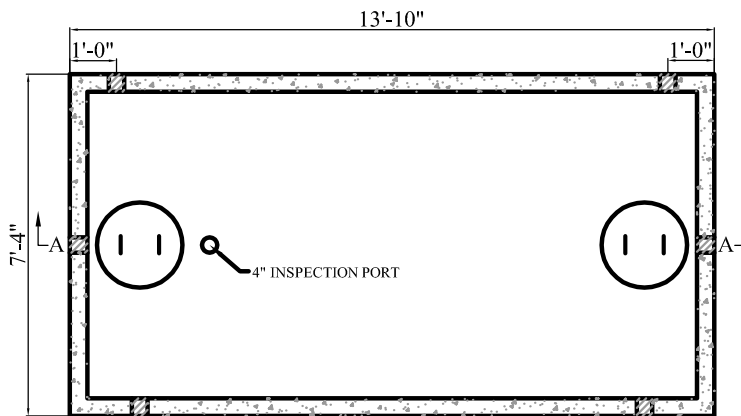


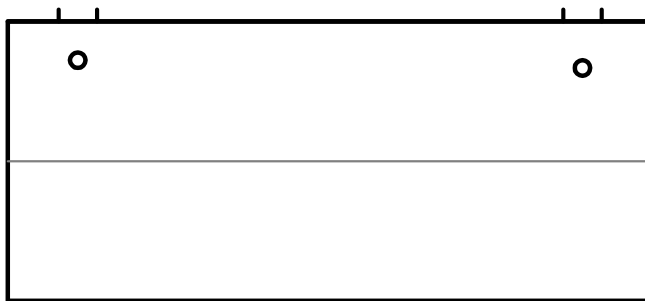
SECTION A-A



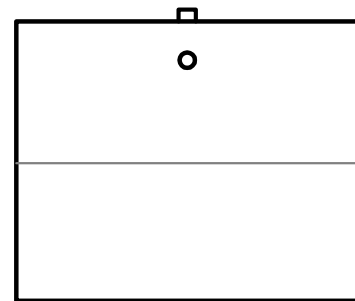
PLAN VIEW

NOTES:

1. CONCRETE STRENGTH = MIN. 4500 PSI
2. #4 REBAR AT 1' O.C.
3. "POLYLOK" PIPE SEALS CAST IN TANK
4. MASTIC SEALANT IN TANK JOINT
5. TANKS CAN BE MODIFIED UPON REQUEST
6. POURED IN BAFFLES MADE TO SPECIFICATIONS



FRONT VIEW



SIDE VIEW

APPROX. WEIGHT:

TOP = 12,900 lb
 BOTTOM = 12,900 lb
 TOTAL = 25,800 lb

GAL. PER IN = 53.35
 ACTUAL GAL. TO OUTLET = 2,614.15
 FULL CAPACITY = 3201



CTJAMISON.COM

PH: 540-483-5944

2,500 Gal. Mid Seam Tank

Date

Feb 2016

Scale

Not To Scale