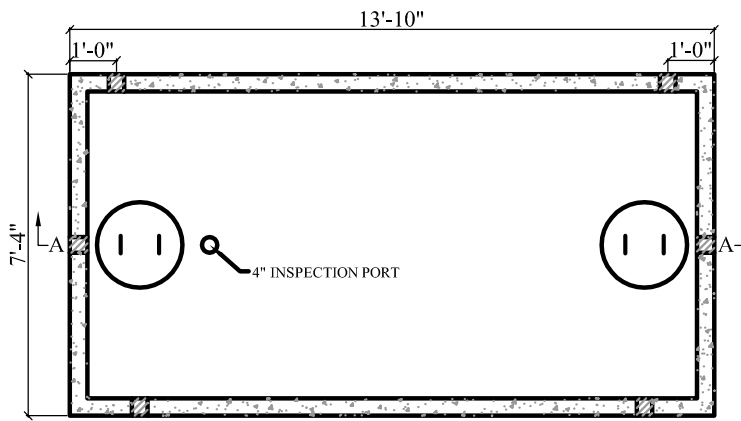
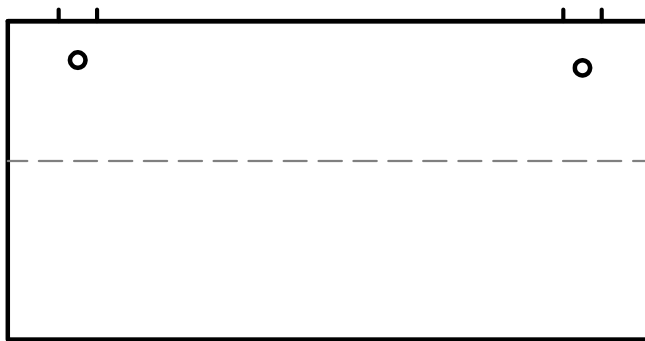


SECTION A-A



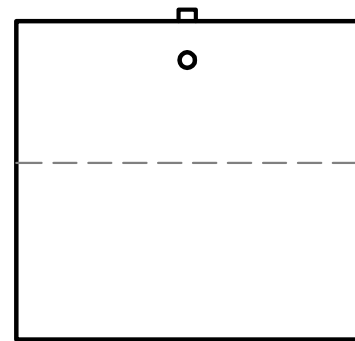
PLAN VIEW

- NOTES:
1. CONCRETE STRENGTH = MIN. 4500 PSI
 2. #4 REBAR AT 1' O.C.
 3. "POLYLOK" PIPE SEALS CAST IN TANK
 4. MASTIC SEALANT IN TANK JOINT
 5. TANKS CAN BE MODIFIED UPON REQUEST



FRONT VIEW

APPROX. WEIGHT:
 TOP = 12,900 lb
 BOTTOM = 14,775 lb
 TOTAL = 27,675 lb



SIDE VIEW

GAL. PER IN = 53.35
 ACTUAL GAL. TO OUTLET = 3,147
 FULL CAPACITY = 3,680



CTJAMISON.COM
 PH: 540-483-5944

3,000 Gal. Mid Seam Tank

Date
 Feb 2016

Scale
 Not To Scale