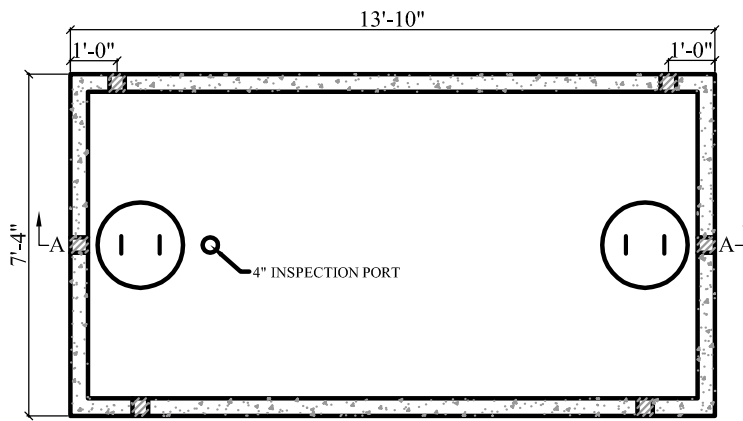


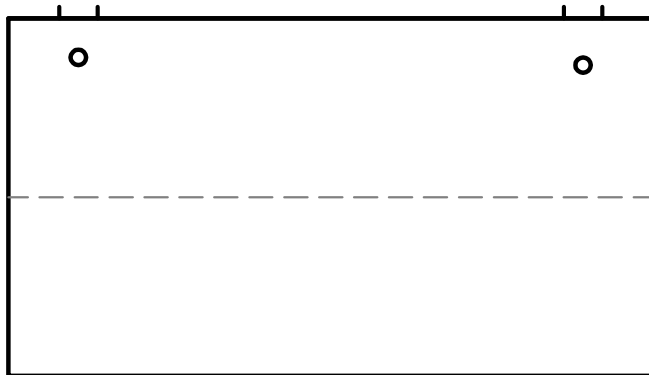
SECTION A-A



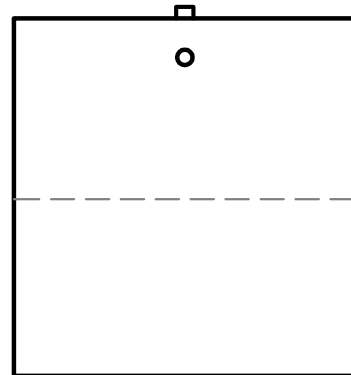
PLAN VIEW

NOTES:

1. CONCRETE STRENGTH = MIN. 4500 PSI
2. #4 REBAR AT 1' O.C.
3. "POLYLOK" PIPE SEALS CAST IN TANK
4. MASTIC SEALANT IN TANK JOINT
5. TANKS CAN BE MODIFIED UPON REQUEST



FRONT VIEW



SIDE VIEW

APPROX. WEIGHT:

TOP = 14,775 lb
 BOTTOM = 14,775 lb
 TOTAL = 29,550 lb

GAL. PER IN = 53.35
 ACTUAL GAL. TO OUTLET = 3,680
 FULL CAPACITY = 4,213



CTJAMISON.COM

PH: 540-483-5944

3,500 Gal. Mid Seam Tank

Date

Feb 2016

Scale

Not To Scale