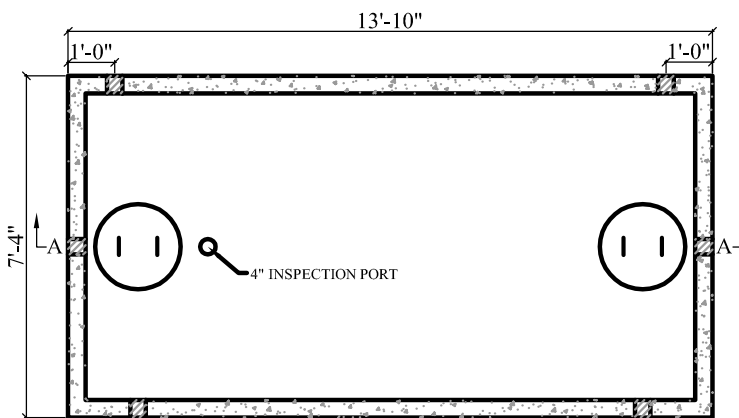


KEYWAY DETAIL

APPROX. WEIGHT:

TOP = 14,775 lb
 BAFFLE = 5,600 lb
 BOTTOM = 14,775 lb
 TOTAL = 29,550 lb

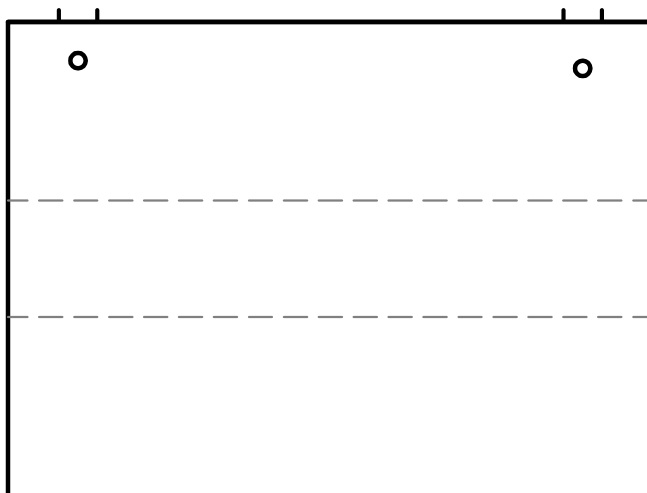


PLAN VIEW

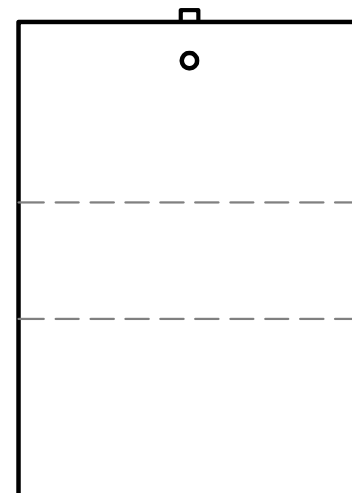
GAL. PER IN = 53.35
 ACTUAL GAL. TO OUTLET = 5,247
 FULL CAPACITY = 5,780

NOTES:

1. CONCRETE STRENGTH = MIN. 4500 PSI
2. #4 REBAR AT 1' O.C.
3. "POLYLOK" PIPE SEALS CAST IN TANK
4. MASTIC SEALANT IN TANK JOINT
5. TANKS CAN BE MODIFIED UPON REQUEST



FRONT VIEW



SIDE VIEW



CTJAMISON.COM

PH: 540-483-5944

5,000 Gal. Multi Seam Tank

Date

Feb 2016

Scale

Not To Scale