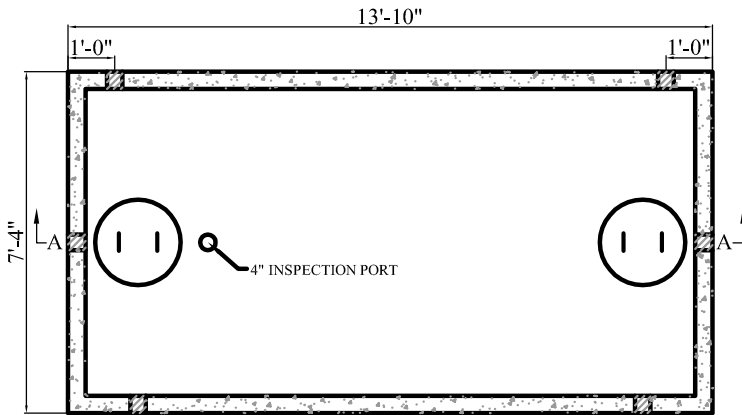


KEYWAY DETAIL

APPROX. WEIGHT:
 TOP = 12,500 lb
 BAFFLE = 5,600 LB (x2)
 BOTTOM = 12,900 lb
 TOTAL = 37,000 lb

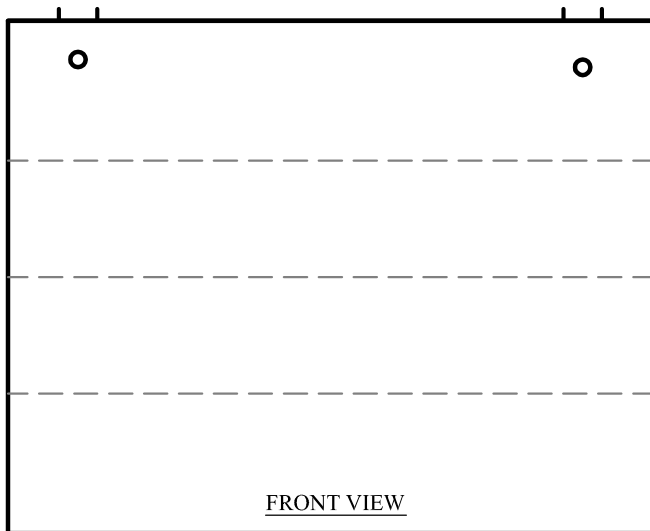


PLAN VIEW

GAL. PER IN = 53.35
 ACTUAL GAL. TO OUTLET = 5,815
 FULL CAPACITY = 6,402

NOTES:

1. CONCRETE STRENGTH = MIN. 4500 PSI
2. #4 REBAR AT 1' O.C.
3. "POLYLOK" PIPE SEALS CAST IN TANK
4. MASTIC SEALANT IN TANK JOINT
5. TANKS CAN BE MODIFIED UPON REQUEST
6. POURED IN BAFFLES MADE TO SPECIFICATIONS



FRONT VIEW



SIDE VIEW



CTJAMISON.COM

PH: 540-483-5944

5500 Gal. Multi Seam Tank

Date

Feb 2016

Scale

Not To Scale