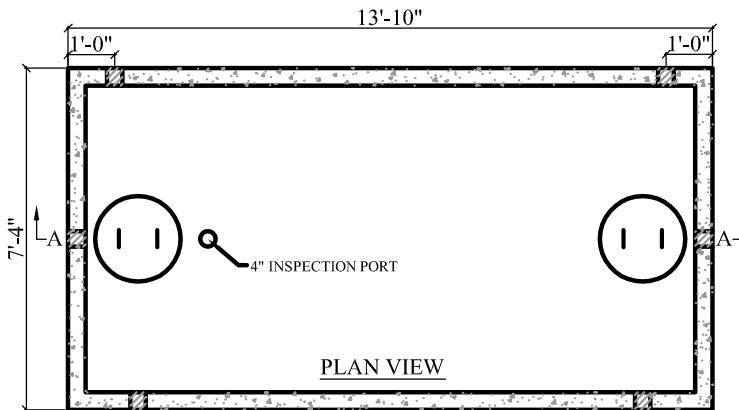


KEYWAY DETAIL

**APPROX. WEIGHT:**

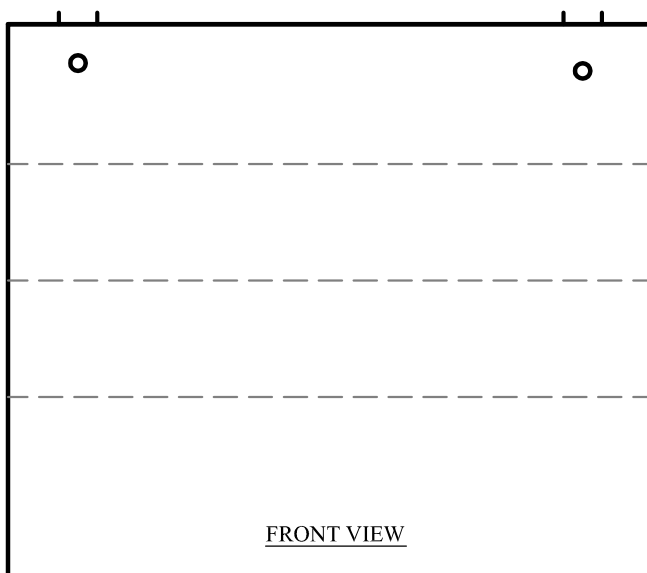
TOP = 12,900 lb  
 BAFFLE = 5,600 lb (x2)  
 BOTTOM = 14,775 lb  
 TOTAL = 38,875 lb



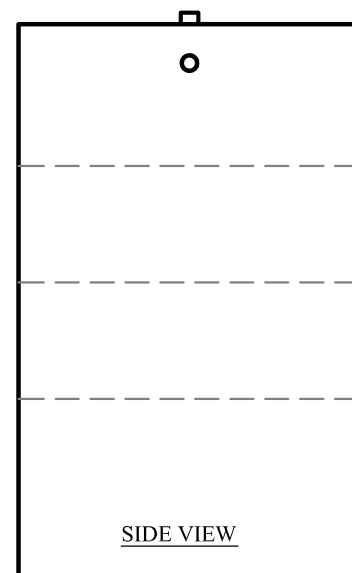
GAL. PER IN = 53.35  
 ACTUAL GAL. TO OUTLET = 6,347  
 FULL CAPACITY = 6,880

**NOTES:**

1. CONCRETE STRENGTH = MIN. 4500 PSI
2. #4 REBAR AT 1' O.C.
3. "POLYLOK" PIPE SEALS CAST IN TANK
4. MASTIC SEALANT IN TANK JOINT
5. TANKS CAN BE MODIFIED UPON REQUEST



FRONT VIEW



SIDE VIEW



CTJAMISON.COM

PH: 540-483-5944

6,000 Gal. Multi Seam Tank

Date

Feb 2016

Scale

Not To Scale