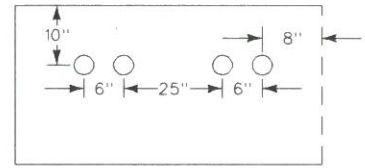
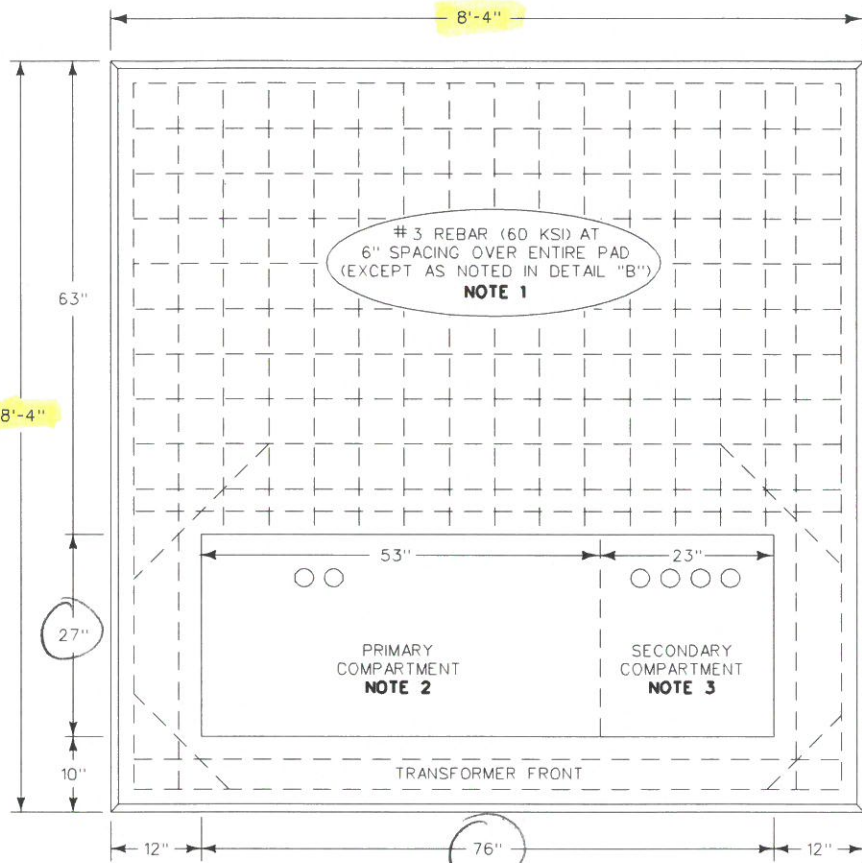
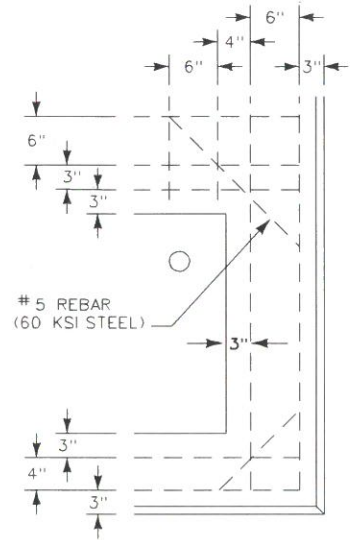


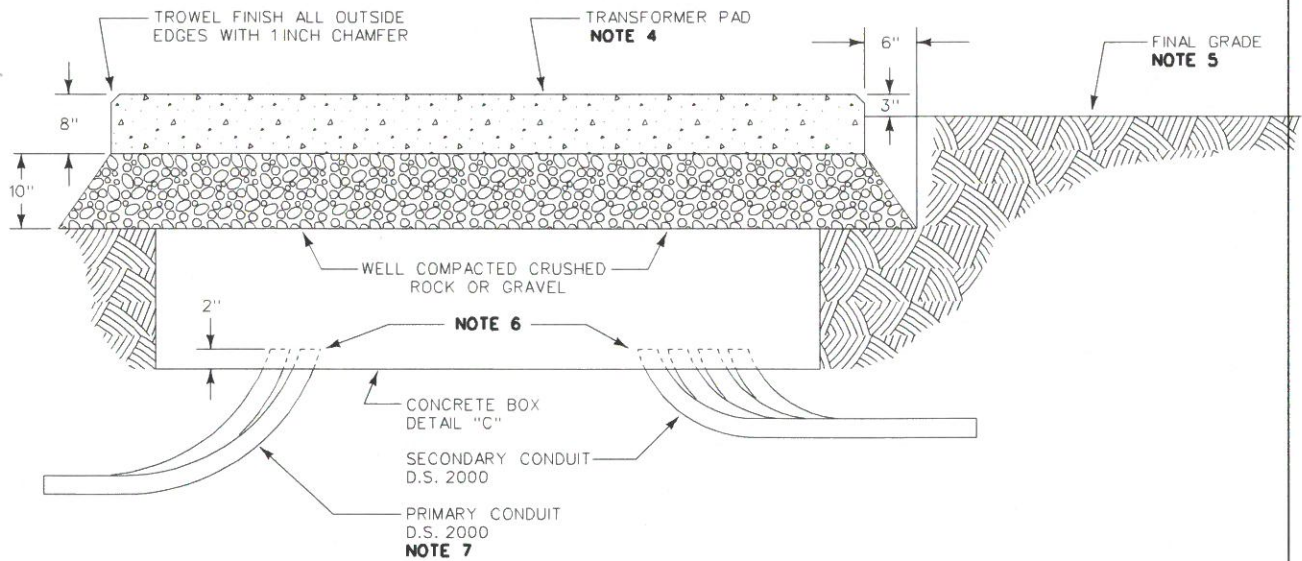
8'-4" x 8'-4" x 8"



DETAIL "A"
PRIMARY COMPARTMENT



DETAIL "B"



CONCRETE PAD AND BOX FOR
THREE PHASE PAD-MOUNTED TRANSFORMER

112.5 - 1000 kVA, 120/208 VOLT
35 kV

DECEMBER 15, 2010

D.S. 2024
PAGE 1 OF 2