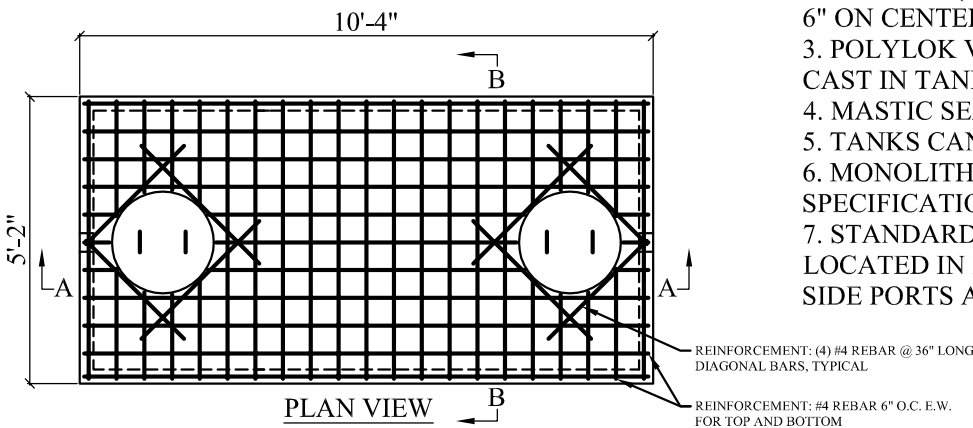


SECTION A-A

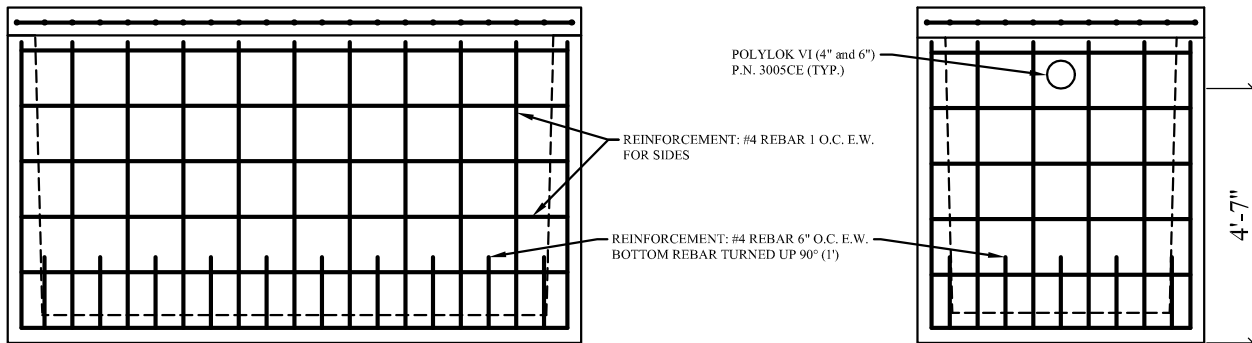
SECTION B-B

NOTES:

1. CONCRETE STRENGTH = MIN. 4500 PSI.
2. #4 REBAR(BOTTOM) #4 REBAR(LID) 6" ON CENTER .
3. POLYLOK VI PIPE SEALS (4"and 6") CAST IN TANK P.N. 3005 CE.
4. MASTIC SEALANT IN TANK JOINT.
5. TANKS CAN BE MODIFIED UPON REQUEST.
6. MONOLITHIC BAFFLES MADE TO SPECIFICATIONS.
7. STANDARD INLET AND OUTLET PORTS LOCATED IN END WALLS ON STOCK ITEMS. SIDE PORTS ARE SPECIAL ORDER.



PLAN VIEW



FRONT VIEW

END VIEW

APPROX. WEIGHT:

TOP = 4,700 lb
 BOTTOM = 15,000 lb
 TOTAL = 19,700 lb

GAL. PER IN = 22.85
 ACTUAL GAL. TO OUTLET = 1,097
 FULL CAPACITY = 1,348



CALLAWAY, VIRGINIA
 PH: 540-483-5944

1,000 Gal. Top Seam Tank
 Highway Rated H-20

Date
 May 23, 2017

Scale
 Not To Scale