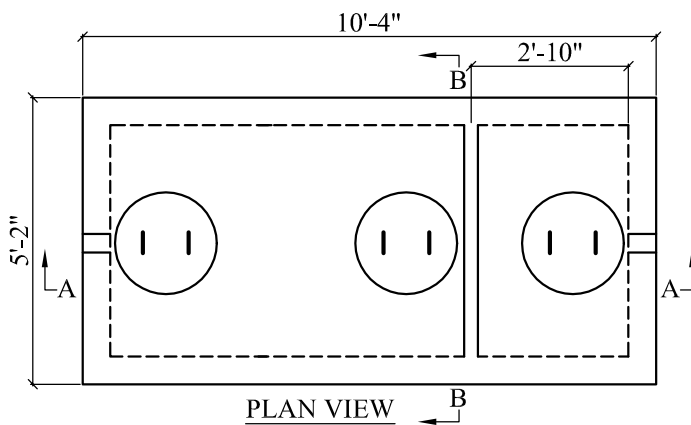


- NOTES:
1. CONCRETE STRENGTH = MIN. 4500 PSI.
 2. #4 REBAR(BOTTOM) #4 REBAR(LID) 6" ON CENTER .
 3. POLYLOK VI PIPE SEALS (4"and 6") CAST IN TANK P.N. 3005 CE.
 4. MASTIC SEALANT IN TANK JOINT.
 5. TANKS CAN BE MODIFIED UPON REQUEST.
 6. MONOLITHIC BAFFLES MADE TO SPECIFICATIONS.
 7. STANDARD INLET AND OUTLET PORTS LOCATED IN END WALLS ON STOCK ITEMS. SIDE PORTS ARE SPECIAL ORDER.



APPROX. WEIGHT:
 TOP = 4,700 lb
 BOTTOM = 16,500 lb
 TOTAL = 21,200 lb

GAL. PER IN = 22.85
 ACTUAL GAL. TO OUTLET = 1,097
 FULL CAPACITY = 1,348



CALLAWAY, VIRGINIA
 PH: 540-483-5944

WVR 1,000 Gal. OWS TS
Highway Rated H-20

Date
 Sept. 12, 2017

Scale
 Not To Scale