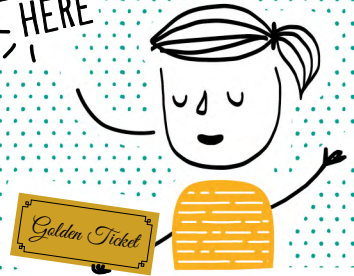


USE YOUR
GOLDEN TICKETS
- HERE



NEVER
"TWO"
EARLY

Example Nursery / Childminder

Can your 2 year old get 15 hours of funded childcare a week during school term time?

To find out visit www.suffolk.gov.uk/two if you get any:

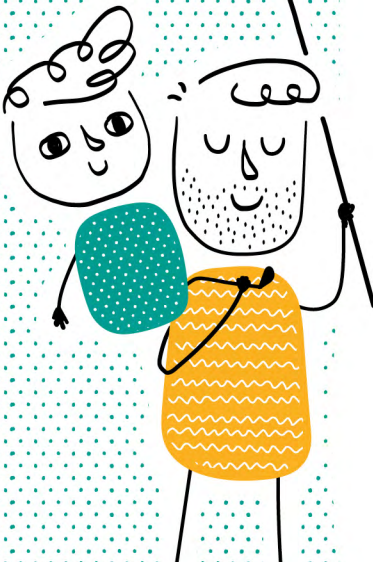
- Income Support
- Income-based Jobseeker's Allowance
- Income-related Employment Support Allowance
- Support through Part 6 of the Immigration and Asylum Act 1999
- State Pension Credit (the guaranteed element)
- Child Tax Credit and /or Working Tax Credit and earn no more than £16,190 per year
- Working Tax Credit 4-week run on (the payment you get when you stop qualifying for Working Tax Credit)

Golden Tickets:

If you receive one of the above benefits a Golden Ticket may be posted to you. Please bring this ticket with you when you want to claim your funded childcare.

Or take proof to your chosen childcare provider that your child:

- Has left care through Special Guardianship, or through an Adoption, Residence or Child Arrangements Order
- Is a Child in Care (CiC) (Looked After Child)
- Has a current Education, Health and Care Plan
- Receives Disability Living Allowance



FUNDED CHILDCARE AT TWO

How will the funded 15 hours per week childcare benefit my 2 year old?

Your child will receive quality early learning opportunities which will allow them to develop their skills, explore and make friends in a fun and safe environment.

Where can I get my funded childcare?

Your child can receive their 15 hours funded childcare with an Ofsted registered early years provider who offers funded 2 year old places, such as a day nursery, pre-school playgroup or a childminder.

When can I start receiving funded childcare for my eligible 2 year old?

Children who are eligible can receive their funded childcare from the beginning of the term after their second birthday. Please refer to the table below:

A child who turns two between:	Is eligible for a funded place from:
1 January to 31 March	April (Summer term)
1 April to 31 August	September (Autumn term)
1 September to 31 December	January (Spring term)



How do I apply?

For more information either:

Contact: **Example Pre-School** on **01473 123456**
or email: **examplepre-school@example.co.uk**

Phone the **Suffolk Family Information Service**
on: **0345 60 800 33** or text: **07624 80 10 60**
(if you text the Family Information Service your number they will call you back).