

CEPro

MARCH 2014
WWW.CEPRO.COM

INTEGRATION
AUDIO/VIDEO
NETWORKING
CONTROL
BUSINESS

CREAM OF THE CROP

CEA MARK OF EXCELLENCE AWARDS
RECOGNIZE 32 TOP PROJECTS
AND 74 PRODUCTS. PAGE 42

**CE PRO ANNUAL
BUYER'S GUIDE:
1,000+ SUPPLIERS
& 41 PRODUCT
CATEGORIES**

COVER STORY

MARK OF EXCELLENCE: PROJECTS

CUSTOM HOME OF THE YEAR BETWEEN \$50,000 - \$150,000

Advanced Communication Technologies

Rockland, Mass.

MODERN CAPE RETREAT

In this new construction home on Cape Cod, ACT worked with the homeowners, architect and builder to design, install and integrate systems that would increase the family's enjoyment of the home and offer convenience and security. The homeowner wanted a fully integrated home, and ACT worked closely with the architects to ensure the technology didn't overpower the house.

A Savant control system gives the family one easy-to-use interface for all of the systems — lighting, distributed audio, distributed video, media rooms, surveil-

lance/security and HVAC. Remote access was important as this is a second home. The Savant system can be used from anywhere via an Apple device with an Internet connection.

An upstairs family/media room features a 60-inch flat panel on a full-motion mount. The subwoofer is hidden behind a grille built into custom cabinetry, and bookshelf speakers function as the rear surround speakers.

For the master bedroom, ACT worked with the architect to design a custom cabinet to house a flat screen mounted on a lift. A swivel rotates the TV to serve three points in the room — an exercise area, the bed and a sitting area. The downstairs media room features a 55-inch flat panel and surround sound. All three flat-screen displays are served by distributed video and

Blu-ray players.

Lighting and motorized shade control make it easy to turn lights on/off, dim lights or use pre-programmed scenes for both indoor and outdoor lighting. Ten zones of distributed audio offer sound throughout the home and grounds, with pre-wiring done for future additional outdoor zones.

ACT installed a surveillance system and integrated the alarm system with the Savant automation, HVAC controls and a computer network.

WINNER Advanced Technologies Baton Rouge, La.

BLAIR HOUSE II CUSTOM HOME

This project required attractive "bells and whistles" to entice the owner/builder's prospective clients and the integrator incorporated his style with the clients' requirements.

Several factors make the control room exemplary: a conductive floor was installed to assist with electronic performance; each run of cables to the panels was color-coded and trimmed with color-matching heatshrink and boots; parallel cables were combed and then wrapped with properly colored Velcro strapping; and additional conduit was added for future proofing.

The four surround-sound systems, located in the dedicated theater, the living room, the master suite and the outdoor patio, are fed by HD sources in the control room using an HD modulator. They are controlled by handheld touchscreens, which can go from room to room, interchangeably using the same macros to adjust lighting and temperature settings and to arm/disarm security. The living room TV is hidden behind a motorized Vutec ArtScreen "painting," while the center-channel speaker is a Stealth Acoustics model inside drywall speaker above the TV.

The theater, custom designed by the client and integrator, has customized acoustic panels, powered chairs, automated lighting and security, and lighted fiber-optic ceiling. The projector is mounted in a small, rear room. A hidden door to a parallel room allows access to in-wall equipment.

The automation system has many



WINNER



Advanced Technologies



“vocal” functions, announcing: specific doors/windows opening or being left open; driveway alerts; countdown timers for arming and disarming; and warnings to outdoor intruders. The system integrates and responds to: temperature/humidity sensors; clients’ thermostatic preferences; hall/stairway lighting sensors; theater and standard scene lighting; and roller screens on the windows. CCTV, including an on-site “deer” camera, can be viewed on the TVs. Additionally, remote access to the systems via smartphone and Internet devices is available.

Convergence Technologies

Graham, N.C.

GEOFF BEALE HOME

This project includes a fully automated smart home with home theater. The automation system provides safety, comfort, entertainment and security for Geoff and

his family. The home features the latest Crestron products, as well high-quality audio, video, lighting, shade control, security and more throughout 3,400 square feet.

Pure Custom Integrations

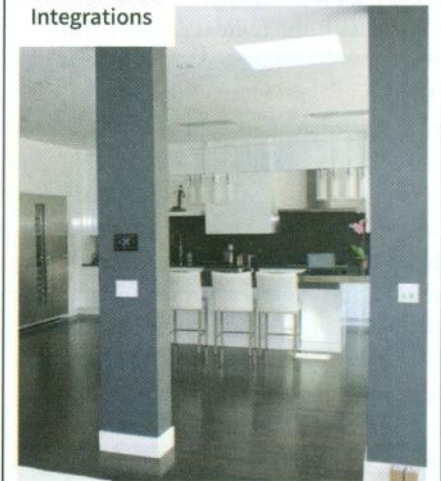
Mississauga, Ont., Canada

OPERA HOUSE

This project includes a Control4 system with 16 audio zones, five video zones, HVAC, lighting control and automated shades. The automation integrates with a Honeywell security system for remote arming/disarming, and the wireless doorbell sends notifications to the owner when someone arrives at the home. Nine cameras distributed throughout the house and property are viewable on Control4 touchpanels. For outdoor entertainment, speakers in the pool house and rock speakers among the area surrounding the pool pipe in audio.



Pure Custom Integrations



Convergence Technologies



COVER STORY

MARK OF EXCELLENCE: PROJECTS

WINNER **SmartHouse Integration**
Sarasota, Fla.

HOUSE ON THE BAY

This project is an example of taking unused space and turning it into a dramatic one. SI installed a full Elan g! System in the client's vacation home but had a space on the ground floor that was vacant. They asked SI to create a theater that could integrate into the automation system. A unique challenge was the low, multi-leveled ceiling and block walls. It has become the client's favorite room and is completely controllable via an Elan HR2.



INTEGRATED SECURITY PROJECT OF THE YEAR

WINNER **Advanced Technologies**
Baton Rouge, La.

BLAIR HOUSE II SECURITY

This active family wanted a no-fuss, reliable high-tech house. The OmniPro II security system from Leviton (formerly HAI) was chosen for its embedded microprocessor reliability; i.e. no PCs, Linux servers or Macs controlling this house. To ensure everything would work consistently, whole-house surge suppression with a counterpoise was installed, as well as a conductive floor in the control room. The trim-out was precise and artistic, making the control room as nicely appointed as the rest of the home's decor.

All systems are interconnected at two OnQ control panels in the main control room under

the stairs. Color-coordinated Velcro, heat-shrink tape and Cat 6 boots were used so all wires from contacts, sensors, and other devices are neatly individualized and named.

Outdoor intrusion detection was installed with driveway /doorbell sensors used for programmed alerts. The system integrates the thermostats and fireplaces, as well. All statuses are accessible from landline phones, smartphones, tablets and URC's MX6000 remotes.

LUXURY HOME OF THE YEAR BETWEEN \$150,000- \$300,000

Atlanta Audio Video Solutions
Roswell, Ga.

INSIDESIGN INNOVATION HOUSE

The Insidesign design team chose Control4 as the central automation system, and various components of the system are showcased throughout the Innovation House, including the automated media room,

music room, living room and kitchen. In keeping with the home's modern take on traditional style, easily concealable Control4 products were implemented: multiple HC-250 home controllers, a flagship HC-800 home controller, in-wall touchscreens, portable touchscreens plus speaker points, smart locks and more.

In addition to a sleek user interface, the

