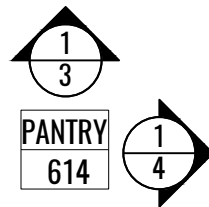
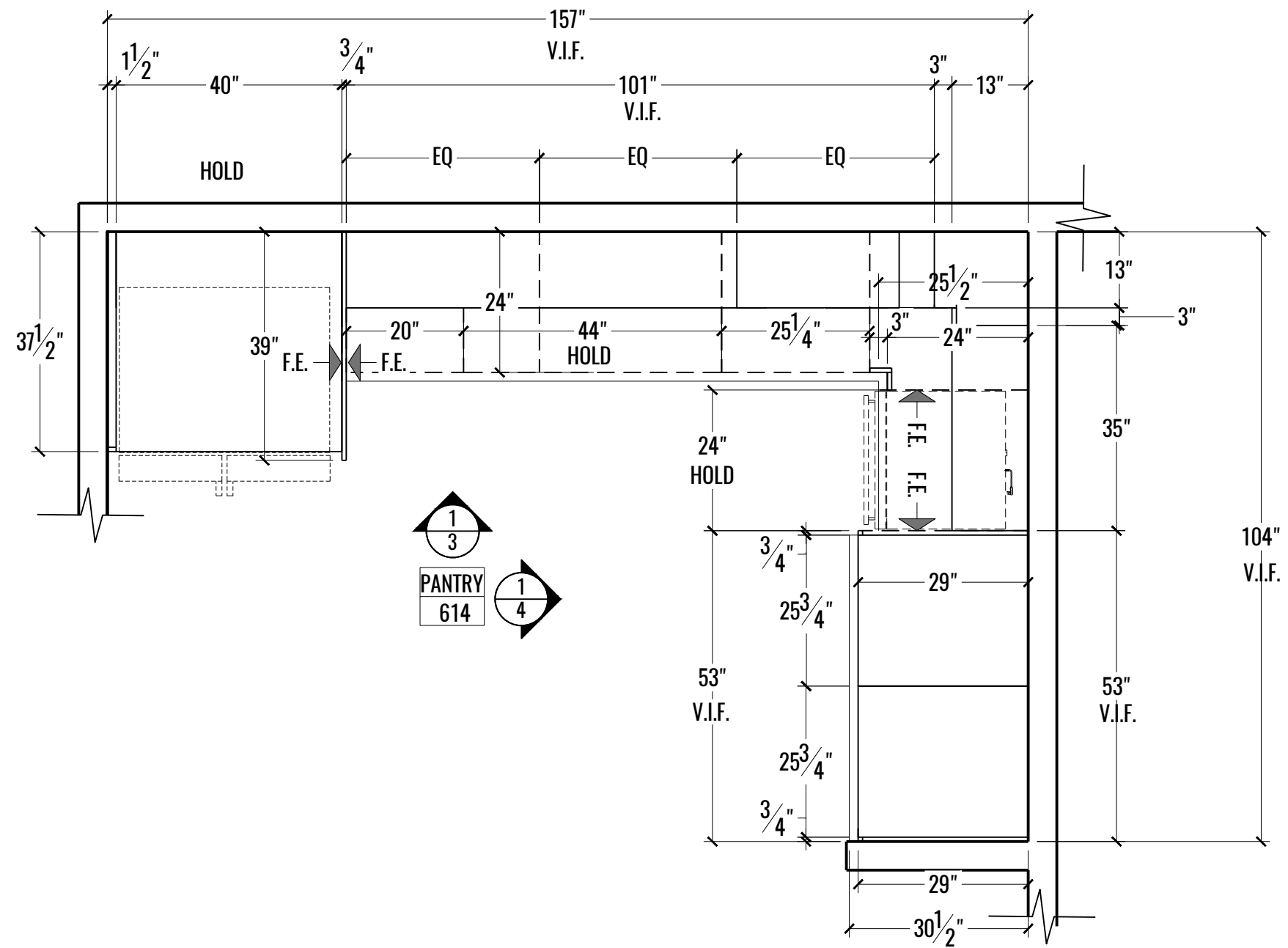
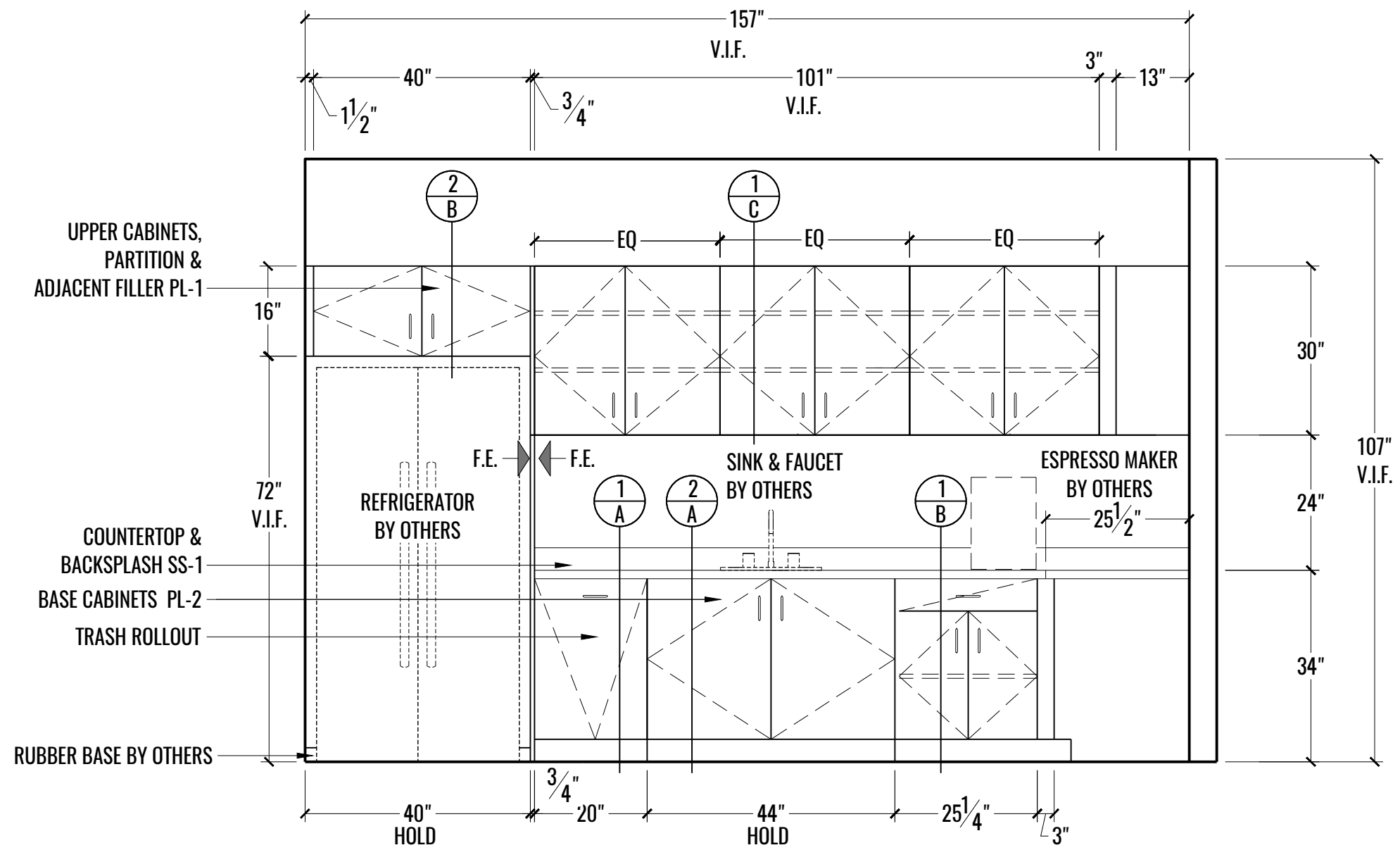


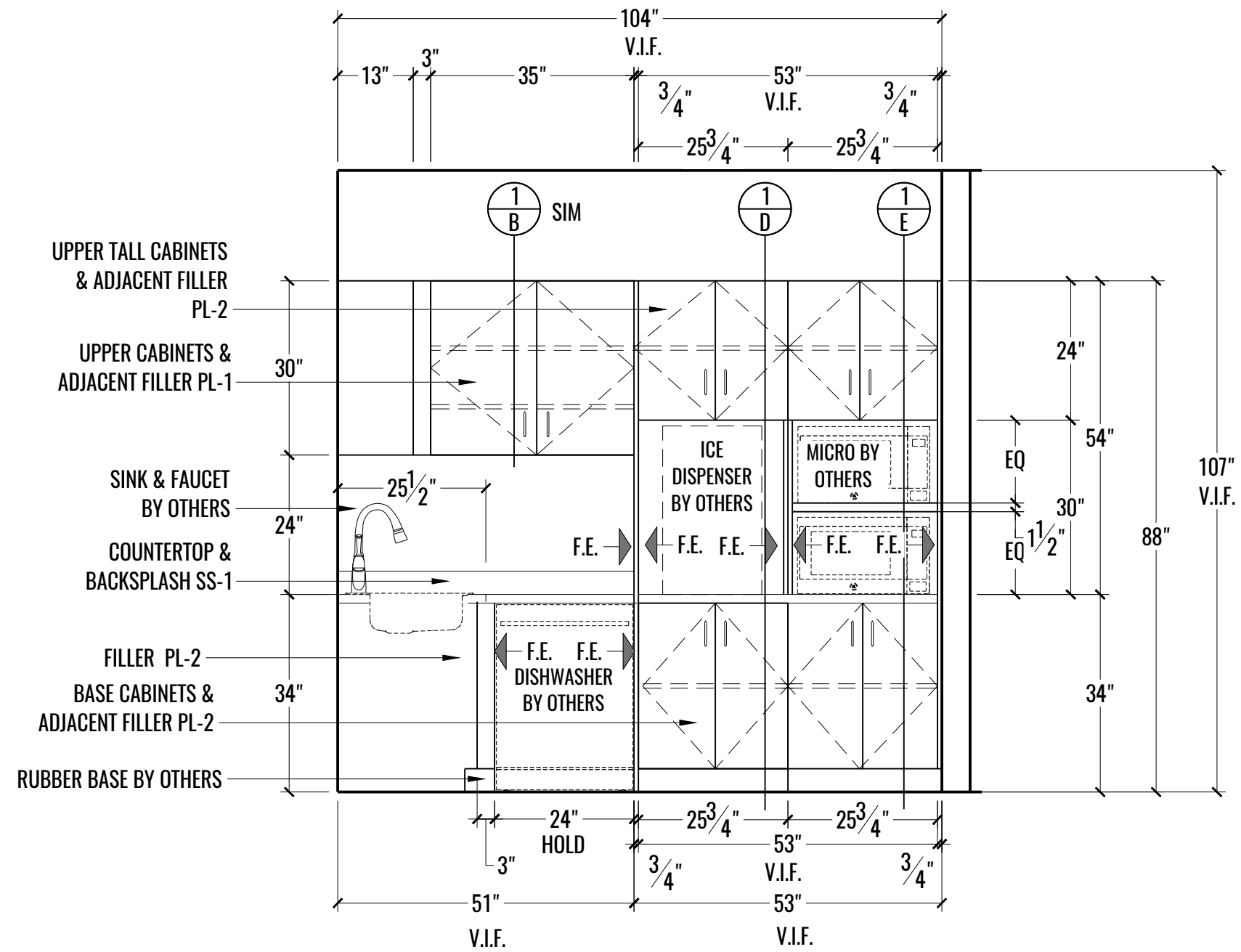
1 PLAN: PROJECT SCOPE
1 SCALE: NOT TO SCALE



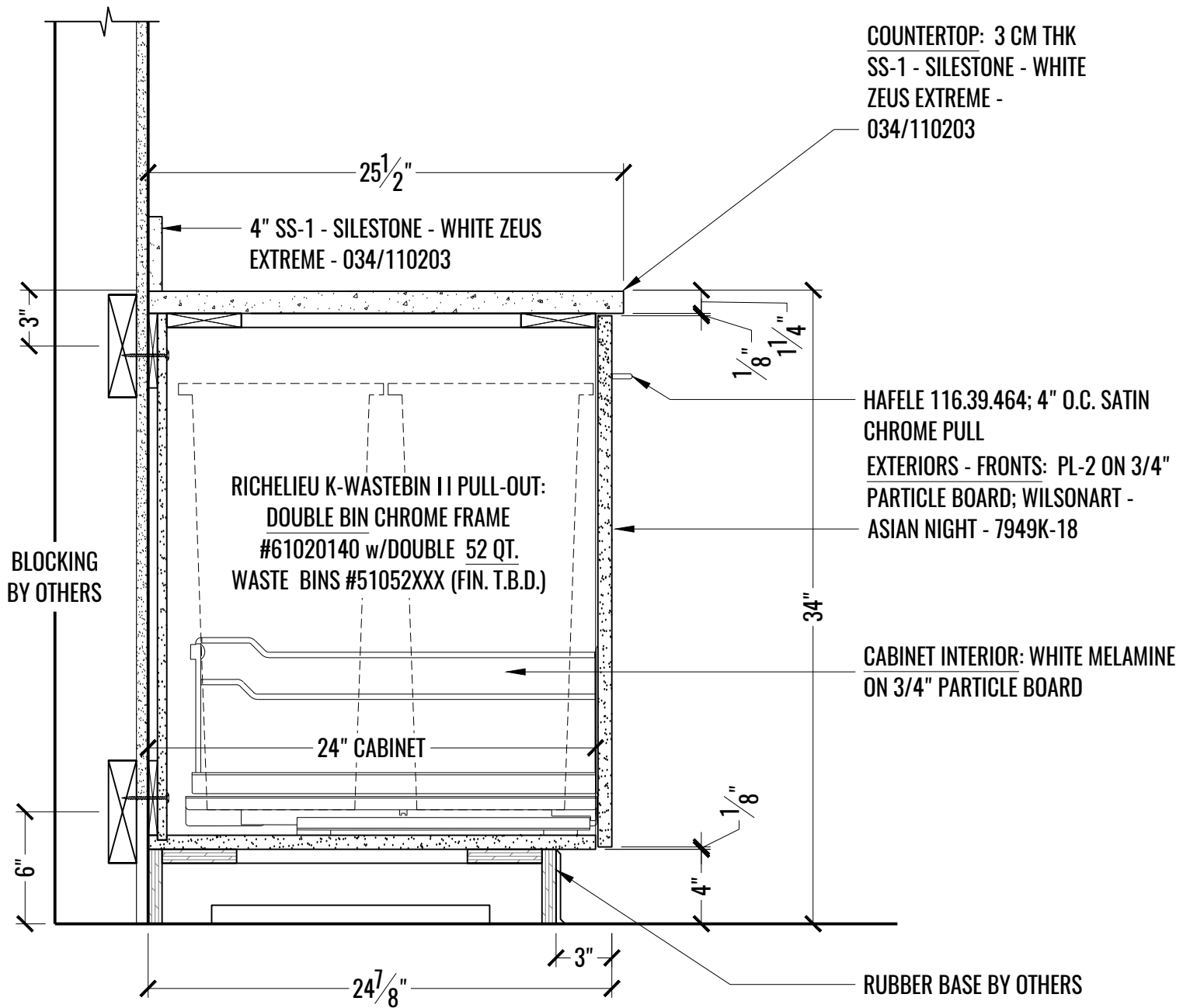
1 PLAN: PANTRY ROOM # 614
 2 SCALE: 1/2" = 1'-0"



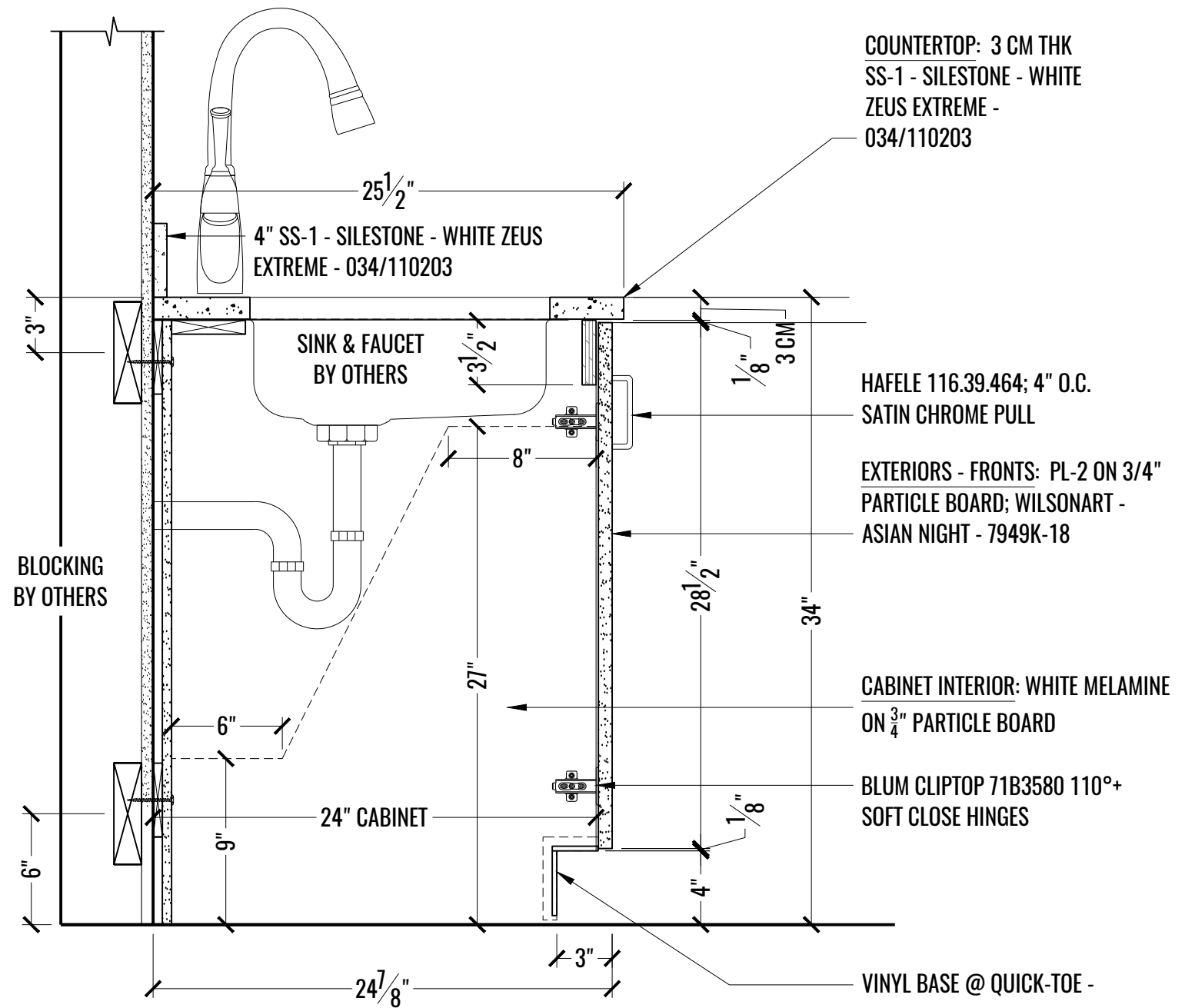
1 ELEVATION: PANTRY ROOM # 614 - @ REFRIGERATOR WALL
 3 SCALE: 1/2" = 1'-0"



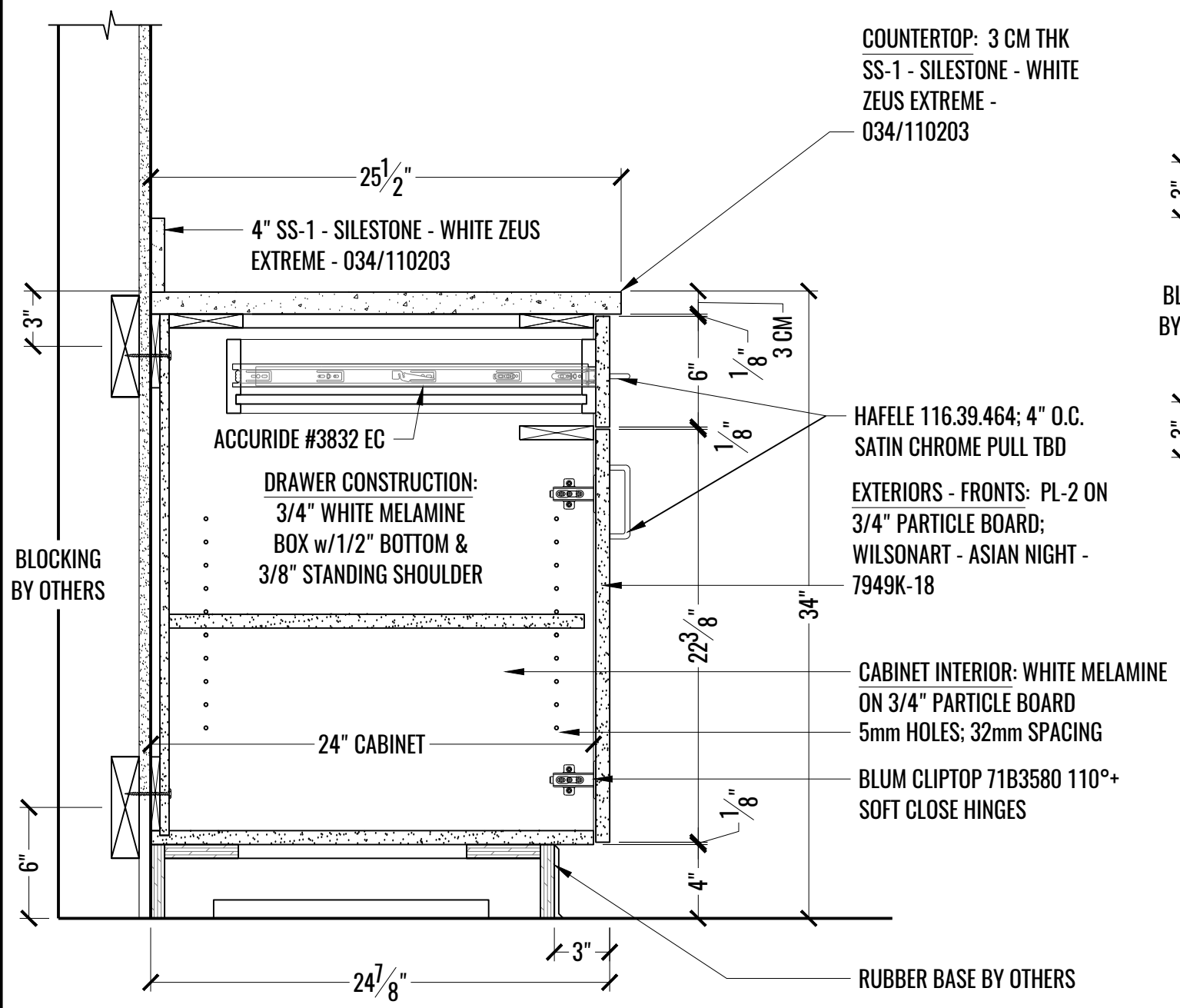
1
4
 ELEVATION: PANTRY ROOM # 614 - @ TALL CABINETS
 SCALE: 1/2" = 1'-0"



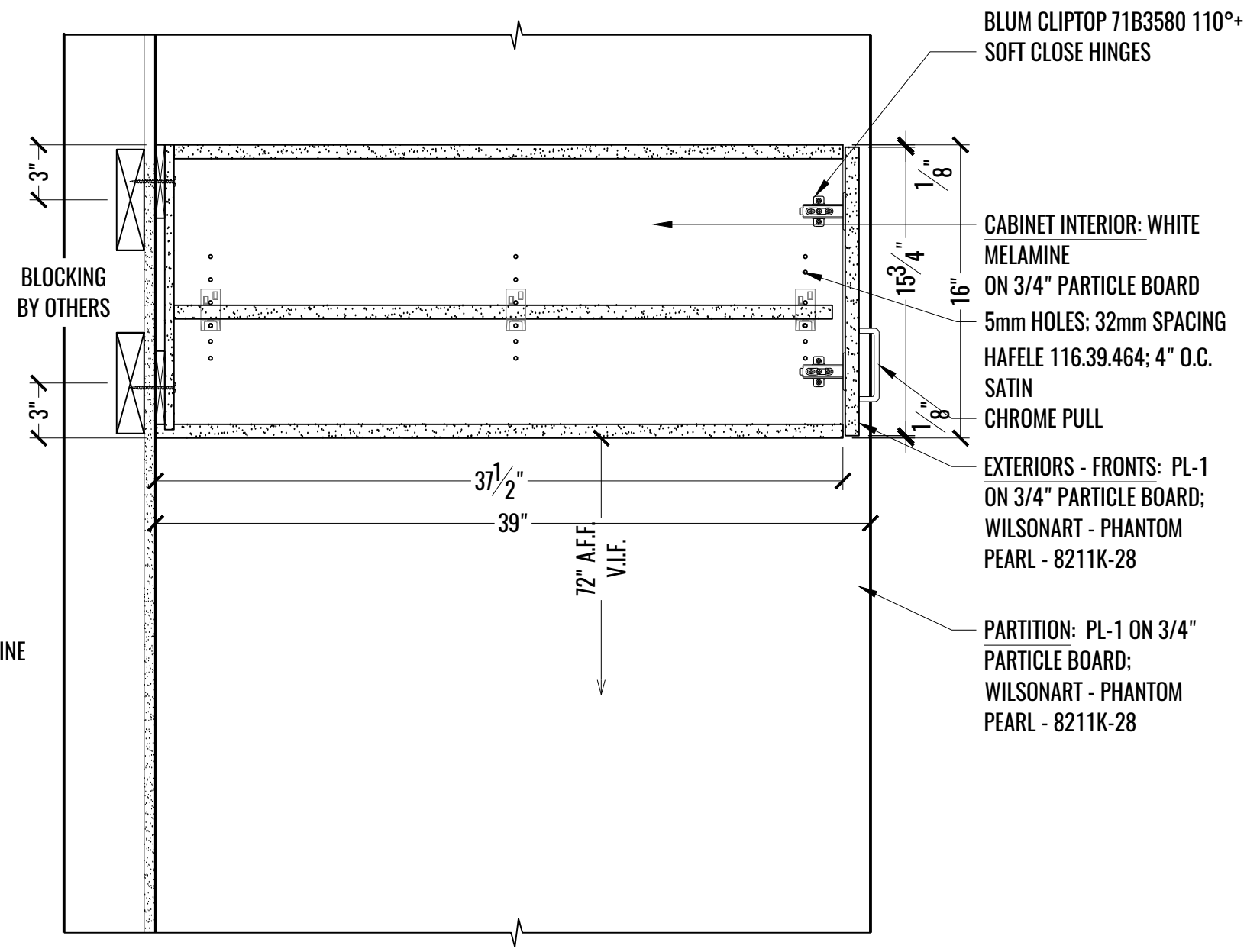
1 SECTION: PANTRY ROOM # 614 @ TRASH ROLLOUT
A SCALE: 1-1/2" = 1'-0"



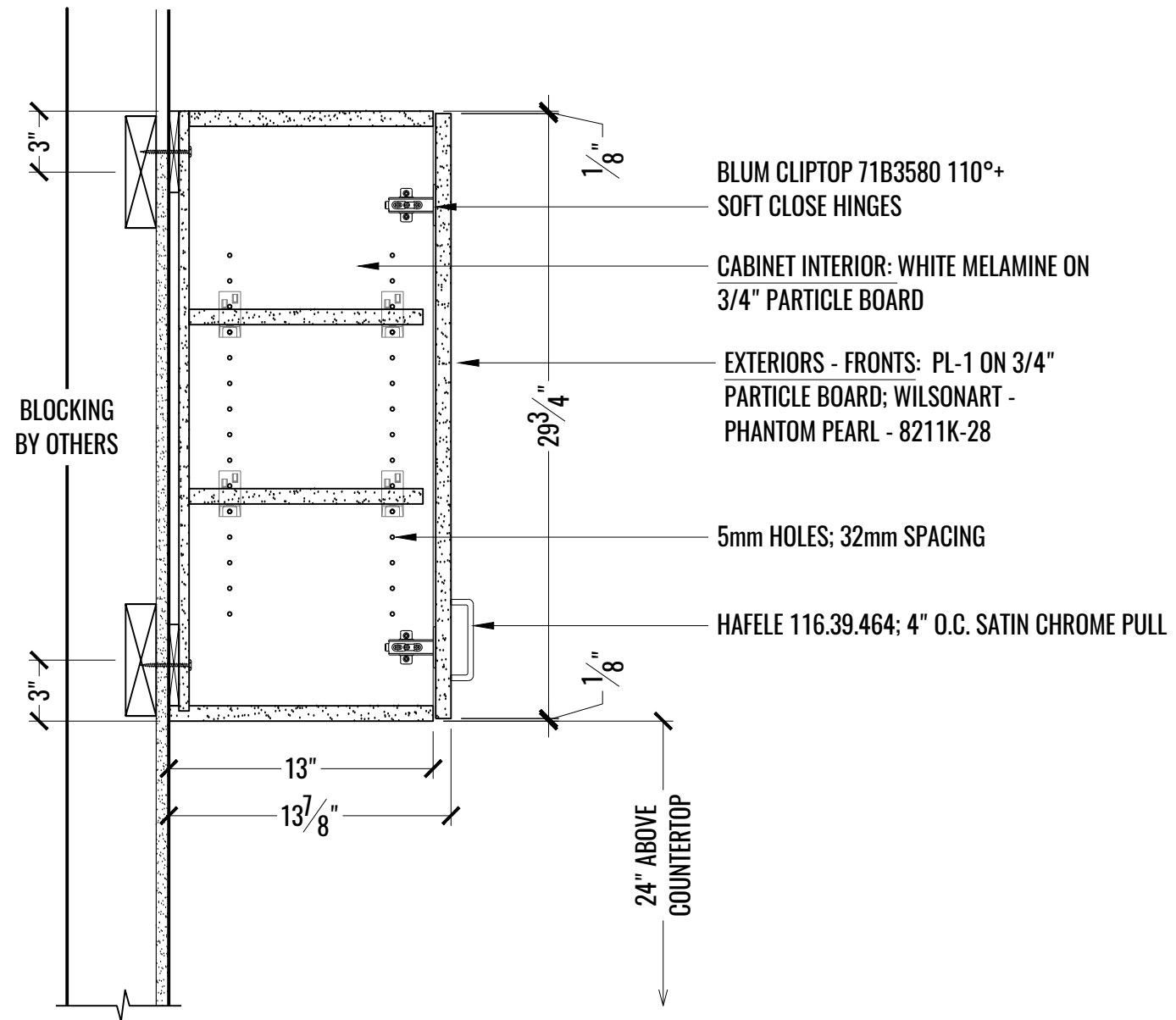
2 SECTION: PANTRY ROOM # 614 @ SINK
A SCALE: 1-1/2" = 1'-0"



1 SECTION: PANTRY ROOM # 614 @ BASE DRAWER
B SCALE: 1-1/2" = 1'-0"



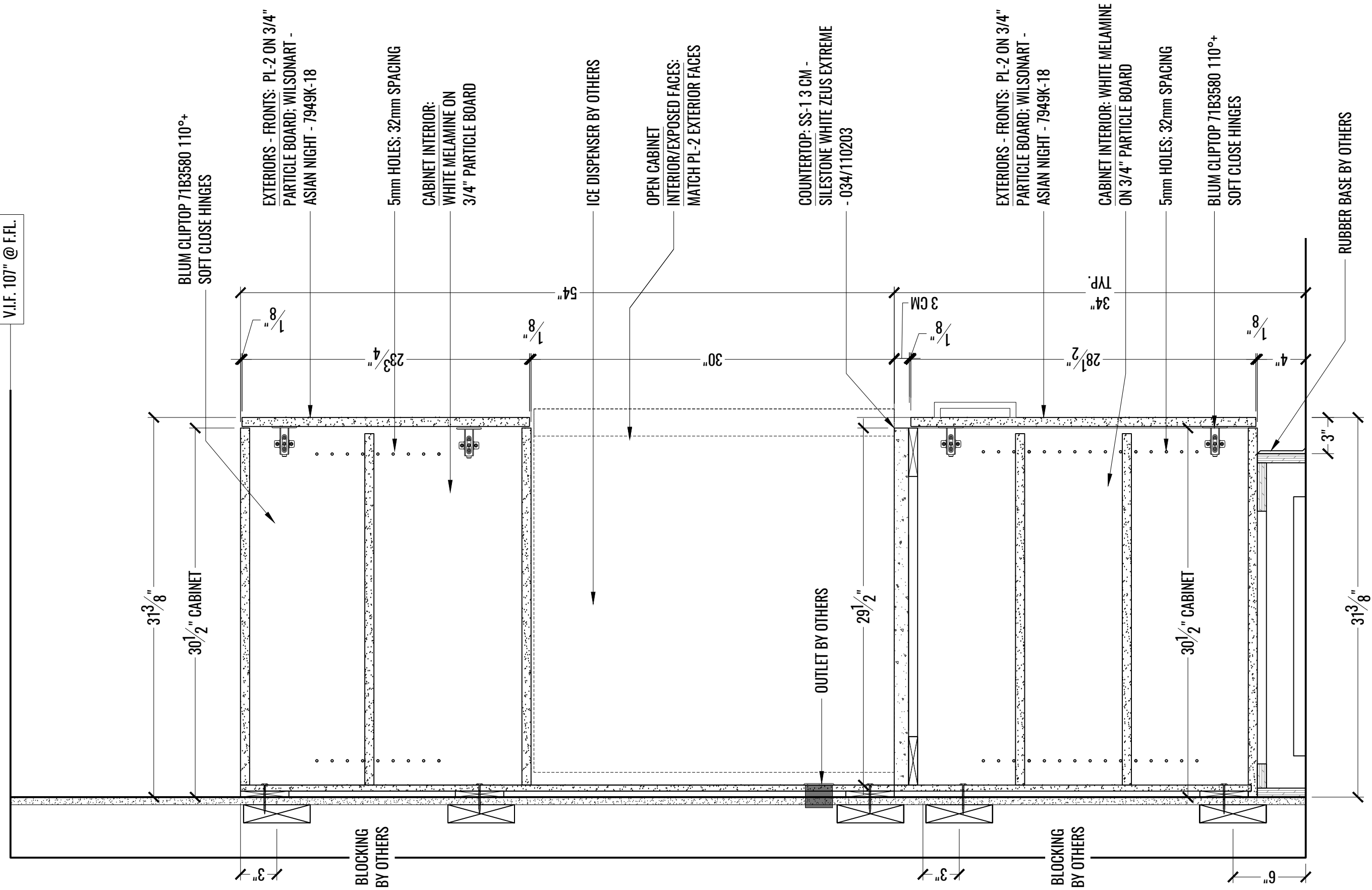
2 SECTION: PANTRY ROOM # 614 - UPPERS @ REFRIGERATOR
B SCALE: 1-1/2" = 1'-0"



- BLUM CLIPTOP 71B3580 110°+
SOFT CLOSE HINGES
- CABINET INTERIOR: WHITE MELAMINE ON
3/4" PARTICLE BOARD
- EXTERIORS - FRONTS: PL-1 ON 3/4"
PARTICLE BOARD; WILSONART -
PHANTOM PEARL - 8211K-28
- 5mm HOLES; 32mm SPACING
- HAFELE 116.39.464; 4" O.C. SATIN CHROME PULL

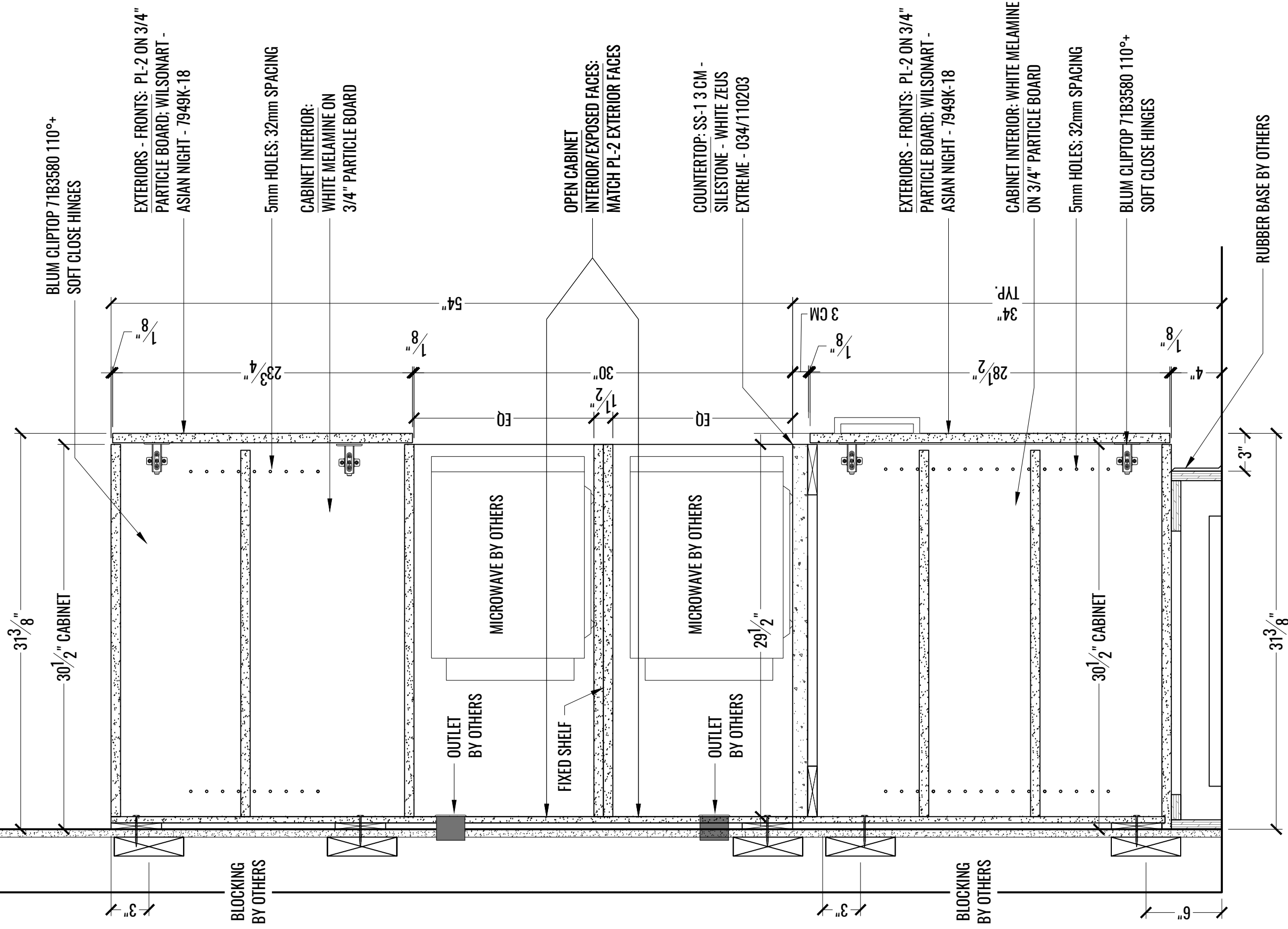
1 SECTION: PANTRY ROOM # 614 - UPPER CABINETS
 C SCALE: 1-1/2" = 1'-0"

V.I.F. 107" @ F.F.L.



1 SECTION: PANTRY ROOM # 614 - TALL CABINET @ ICE DISPENSER
 D SCALE: 1-1/2" = 1'-0"

V.I.F. 107" @ F.F.L.



BLUM CLIPTOP 71B3580 110°+
SOFT CLOSE HINGES

31³/₈"
30¹/₂" CABINET

EXTERIORS - FRONTS: PL-2 ON 3/4"
PARTICLE BOARD; WILSONART -
ASIAN NIGHT - 7949K-18

5mm HOLES; 32mm SPACING

CABINET INTERIOR:
WHITE MELAMINE ON
3/4" PARTICLE BOARD

OPEN CABINET
INTERIOR/EXPOSED FACES:
MATCH PL-2 EXTERIOR FACES

COUNTERTOP: SS-1 3 CM -
SILESTONE - WHITE ZEUS
EXTREME - 034/110203

EXTERIORS - FRONTS: PL-2 ON 3/4"
PARTICLE BOARD; WILSONART -
ASIAN NIGHT - 7949K-18

CABINET INTERIOR: WHITE MELAMINE
ON 3/4" PARTICLE BOARD

5mm HOLES; 32mm SPACING

BLUM CLIPTOP 71B3580 110°+
SOFT CLOSE HINGES

RUBBER BASE BY OTHERS

1/8"

28³/₄"

1/8"

54"

1/2"
30"

1/8"

3 CM

28¹/₂"

34"
TYP.

1/8"

4"

31³/₈"

3"

BLOCKING
BY OTHERS

OUTLET
BY OTHERS

FIXED SHELF

OUTLET
BY OTHERS

29¹/₂"

3"

BLOCKING
BY OTHERS

30¹/₂" CABINET

6"

1 SECTION: PANTRY ROOM # 614 - TALL CABINET @ MICROWAVES
E SCALE: 1-1/2" = 1'-0"