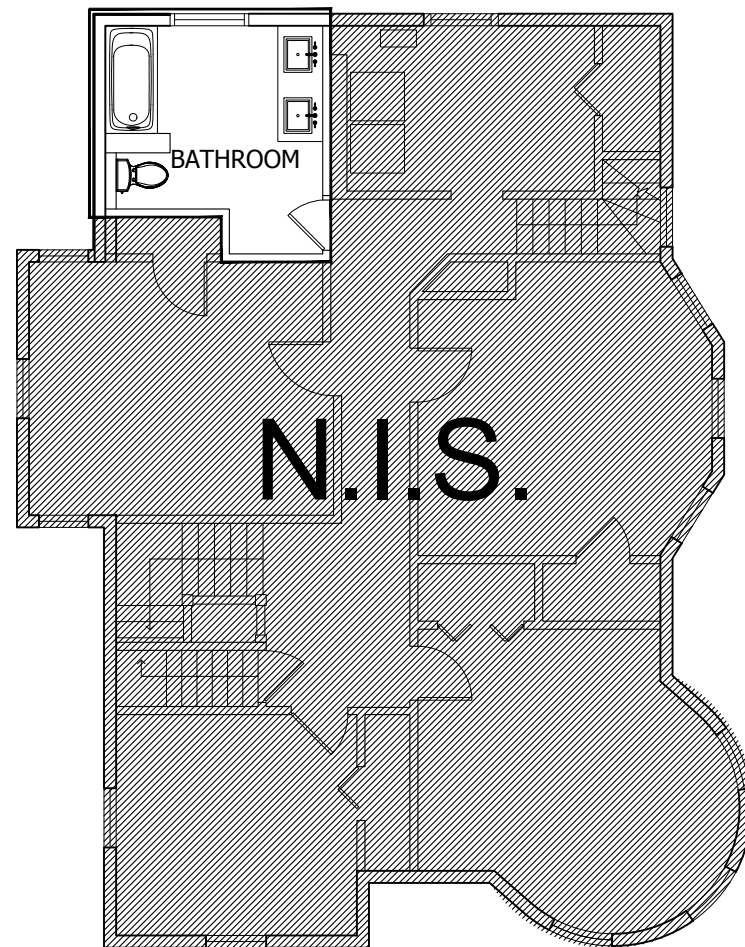


PROJECT SCOPE:

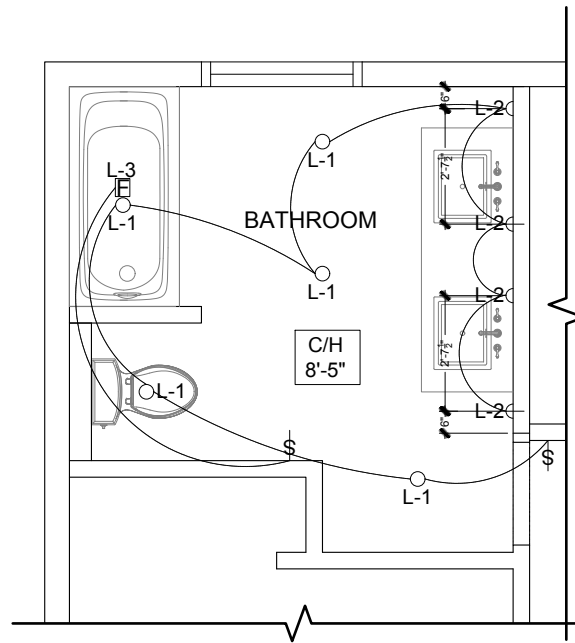
PHASE 1: GUEST BATHROOM



DRAWING INDEX

A0.00	COVER SHEET
A1.01	NEW FLOOR PLAN/DEMO PLAN
A2.01	REFLECTED CEILING PLAN
A3.01	INTERIOR ELEVATIONS
A4.01	SCHEDULES

	DOOR TAG		SPOT ELEVATION
	WALL TAG		WINDOW TAG
	EQUIPMENT TAG		ROOM TAG
	ELEVATION SYMBOL		DETAIL SYMBOL
	NOT IN SCOPE COLUMN GRID AND BUBBLE		
	VIEW SCALE		DRAWING TITLE



BATHROOM KEY

- 4" ROUND RECESSED LIGHT FIXTURE
- ∩ JAYNA VANITY SCONCE - LVX2186219
FINISH 11 - ANTIQUE BRONZE
- ☐ EXHAUST FAN

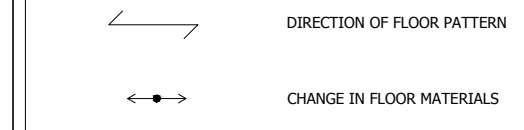
GENERAL CEILING NOTES

1. THE REFLECTED CEILING PLAN INDICATES THE LOCATION OF CEILING HEIGHTS, LIGHT FIXTURES, AND ASSOCIATED ITEMS. SWITCHES TO BE REPLACED IN SAME LOCATION AS APPLICABLE. NEW ITEM LOCATIONS TO BE COORDINATED IN FIELD.
2. ALL HARD CEILINGS TO BE PAINTED U.O.N.
3. EXISTING CEILINGS TO REMAIN, U.O.N.
4. REWIRE LIGHTING FIXTURES PER NEW LAYOUT. ALL FIXTURES AND DEVICES TO BE UL LABELED.
5. EXACT LOCATIONS OF NEW FIXTURES TO BE COORDINATED IN FIELD.
6. FURNISH AND INSTALL ALL FIXTURES, ASSOCIATED TRIM, LAMPS, AND SEISMIC BRACING.
7. PROVIDE BLOCKING ABOVE CEILING REQUIRED FOR ALL CEILING MOUNTED EQUIPMENT.

GENERAL FINISH NOTES

1. FINISHES TO BE NEW, U.O.N.
2. NEW WALL BASE TO BE INSTALLED AT ALL NEW AND EXISTING PARTITIONS. MATCH EXISTING MOLDING THROUGHOUT.
3. PROVIDE THRESHOLDS AT FLOORING CHANGES.
4. ELECTRICAL RECEPTACLES, SWITCHING DEVICES, AND COVER PLATES THROUGHOUT TO BE REPLACED.

LEGEND



FINISH KEYNOTES

- ① NOTE
- ②
- ③

LEGEND

8' - 5"	CEILING HEIGHT
L-1 ○	4" ROUND RECESSED LIGHT FIXTURE
L-2 ∩	JAYNA VANITY SCONCE - LVX2186219 FINISH 11 - ANTIQUE BRONZE
L-3 ☐	EXHAUST FAN

RCP KEYNOTES

- ① NOTE
- ②
- ③

GENERAL POWER NOTES

1. OUTLETS TO BE MOUNTED AT 18" AFF, U.O.N. ALL EXISTING OUTLETS AND TEL/DATA CONNECTIONS ON EXISTING WALLS TO REMAIN.
2. SWITCHES TO BE LOCATED 42" AFF, U.O.N. SEE ELECTRICAL PLANS FOR SWITCH LOCATION.
3. ELECTRICAL DEVICE RECEPTACLES AND FACE PLATES TO BE WHITE.
4. ELECTRICAL DEVICES SHOWN FOR LOCATION ONLY.
5. CENTER OUTLETS ON WALL SIDE TO SIDE, U.O.N.
6. WHERE DEVICES ARE MOUNTED IN SAME VICINITY ON OPPOSITE SIDES OF A PARTITION, STAGGER MOUNTING LOCATIONS SO THEY DO NOT SHARE THE SAME STUD CAVITY.
7. MULTIPLE SWITCH OR OUTLET DEVICES IN ONE LOCATION SHALL BE INSTALLED IN A COMMON MULTI-GANG BOX WITH A COMMON FACEPLATE WHERE POSSIBLE. MOUNT MULTIPLE CONTROLS AS CLOSE TOGETHER AS POSSIBLE AND IN-LINE WITH EACH OTHER.
8. OUTLETS TO BE LOCATED AS INDICATED ON PLANS AND ACCORDING TO CODE.
9. UPDATE LABELS AT ELECTRICAL PANELS.

POWER LEGEND

▨	NOT IN SCOPE
⊕	DUPLEX OUTLET
⊕	QUADRAPLEX OUTLET

POWER KEYNOTES

- ① COORDINATE LOCATIONS OF NEW POWER/DATA CONNECTIONS FOR SERVERS WITH OWNER.
- ② COORDINATE EXACT LOCATION AND CONNECTION OF FURNITURE WHIP INFEEDS WITH FURNITURE VENDOR.
- ③ PROVIDE CONNECTRAC 2.7 UNDERCARPET WIREWAY. COORDINATE EXACT LENGTH AND CONNECTION WITH FURNITURE VENDOR.

1 REFLECTED CEILING PLAN

1/2" = 1'-0"

SCHEMATIC DESIGN



Playing with Color

SCHEMATIC DESIGN

Bathroom



Drop in tub



Single Robe Hook



60" Curved Shower Rod



Single Robe Hook



Towel Ring



24" Towel Bar



Double Robe Hook



Faucet & Levers



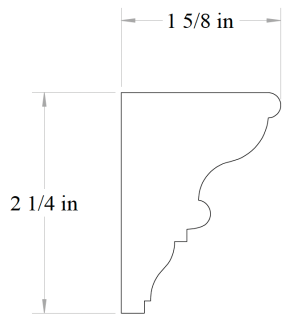
72" Double Vanity



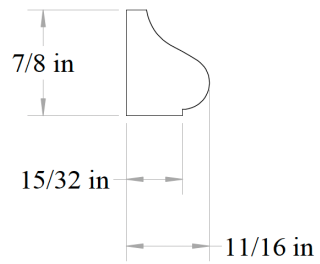
Vanity Pulls

SCHEMATIC DESIGN

Trim Details



A&M # 19151
1-5/8" X 2-1/4"



A&M# 1633
11/16" x 7/8"



Before



After

