

CABINETY SPECIFICATION

CASEWORK

CONSTRUCTION TYPE:	TYPE A, FLUSH OVERLAY (AWI STANDARDS)
JOINERY TYPE:	DOWEL
CORE MATERIAL:	INDUSTRIAL GRADE PARTICLEBOARD
BASE TOE-KICK HEIGHT:	4" TYPICAL
EXPOSED EXTERIOR SURFACES:	VERTICAL GRADE LAMINATE
EXPOSED INTERIOR SURFACES:	VERTICAL GRADE LAMINATE
SEMI-EXPOSED SURFACES:	WHITE MELAMINE; VERTICAL GRADE LAMINATE WHEN MATCHING EXPOSED SURFACES
EDGE BANDING:	.018" THICK MATCHING PVC
CASE MATERIAL:	3/4" THICK WHITE MELAMINE ON INDUSTRIAL GRADE PARTICLE BOARD
BACK MATERIAL:	1/2" THICK WHITE MELAMINE ON INDUSTRIAL GRADE PARTICLE BOARD

DOORS & DRAWER FRONTS

CONSTRUCTION TYPE:	SLAB
CORE MATERIAL:	INDUSTRIAL GRADE PARTICLEBOARD
EXTERIOR SURFACE:	VERTICAL GRADE LAMINATE
INTERIOR SURFACE:	VERTICAL GRADE LAMINATE WHEN MATCHING SEMI-EXPOSED SURFACES
EDGE BANDING:	.018" THICK MATCHING PVC
DRAWER GRAIN DIRECTION:	VERTICAL TYPICAL
DOOR GRAIN DIRECTION:	VERTICAL TYPICAL

DRAWER BOX CONSTRUCTION

CONSTRUCTION TYPE:	FIVE-PIECE
JOINERY TYPE:	DOWEL
CORE MATERIAL:	INDUSTRIAL GRADE PARTICLEBOARD
SURFACES:	WHITE MELAMINE (UNLESS OTHERWISE NOTED)
SIDE MATERIAL:	3/4" WHITE MELAMINE ON INDUSTRIAL GRADE PARTICLE BOARD
FRONT & BACK MATERIAL:	3/4" WHITE MELAMINE ON INDUSTRIAL GRADE PARTICLE BOARD
BOTTOM MATERIAL:	1/2" WHITE MELAMINE ON INDUSTRIAL GRADE PARTICLE BOARD
EDGE BANDING:	.018" THICK MATCHING PVC

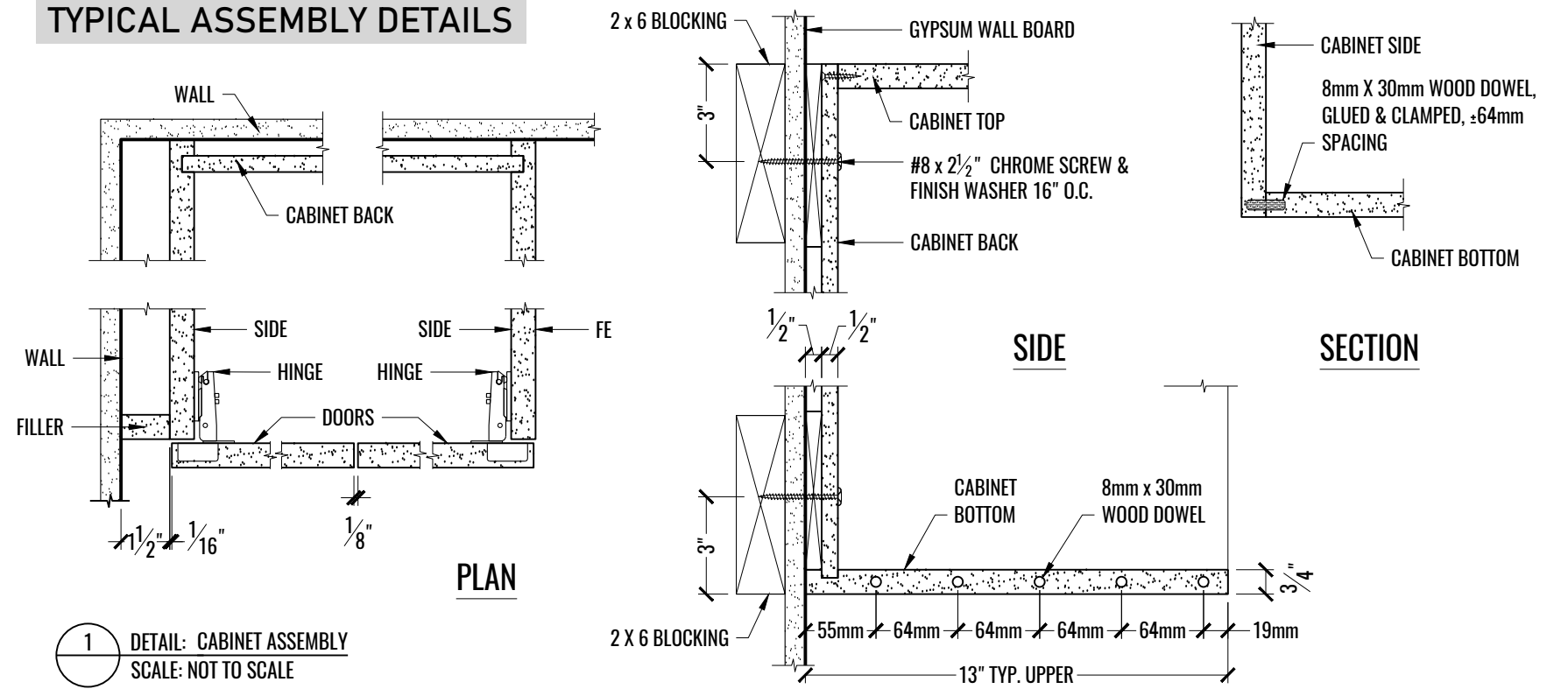
CABINETY SHELVES

CORE MATERIAL:	3/4" THICK INDUSTRIAL GRADE PARTICLEBOARD TO 36" WIDE MAXIMUM
EXPOSED SURFACES:	VERTICAL GRADE LAMINATE
SEMI-EXPOSED SURFACES:	WHITE MELAMINE UNLESS OTHERWISE NOTED
EDGE BANDING:	.018" THICK MATCHING PVC

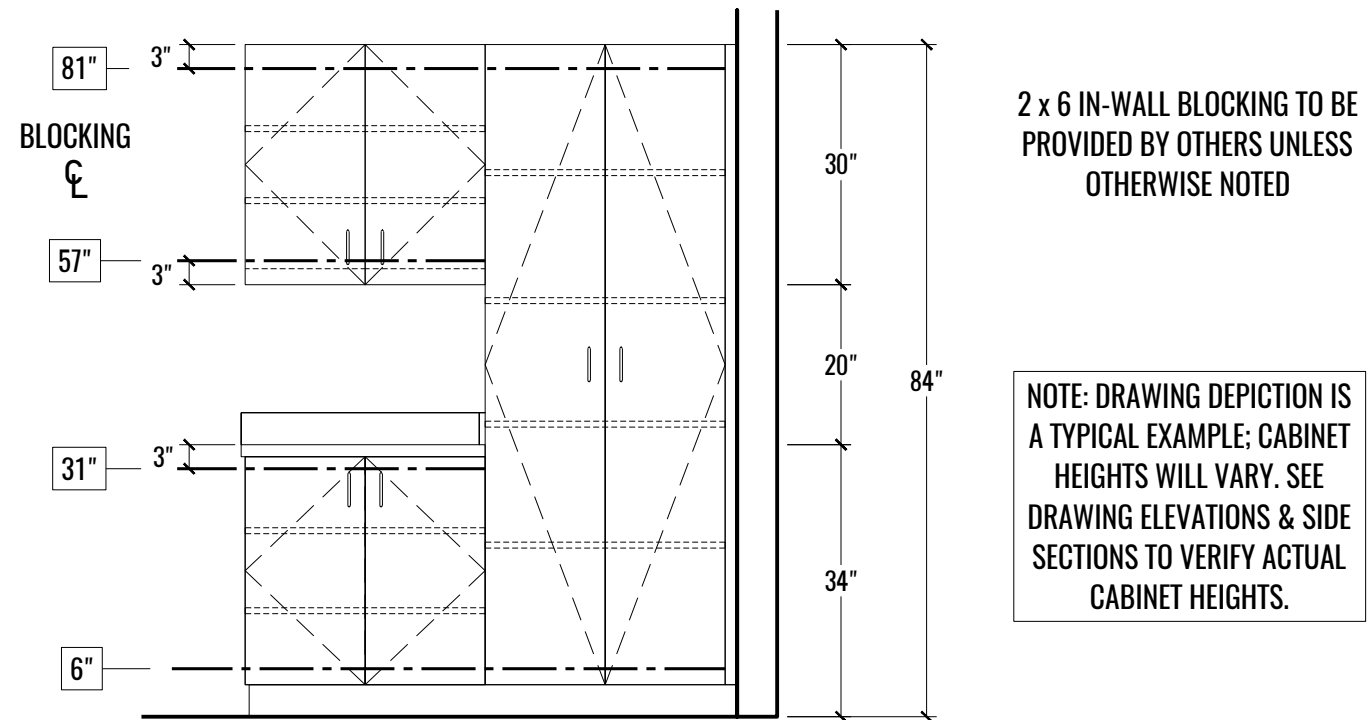
HUMIDITY AND MOISTURE:

OPTIMUM MOISTURE CONTENT AND RELATIVE HUMIDITY (NORTHEAST UNITED STATES).
 MOISTURE CONTENT: EXTERIOR 9-15%; INTERIOR 5-10%
 INDOOR RELATIVE HUMIDITY REQUIRED: 25-55%

TYPICAL ASSEMBLY DETAILS



IN-WALL BLOCKING



2 ELEVATION: IN-WALL BLOCKING CENTER LINES
 SCALE: 1/2" = 1'-0"