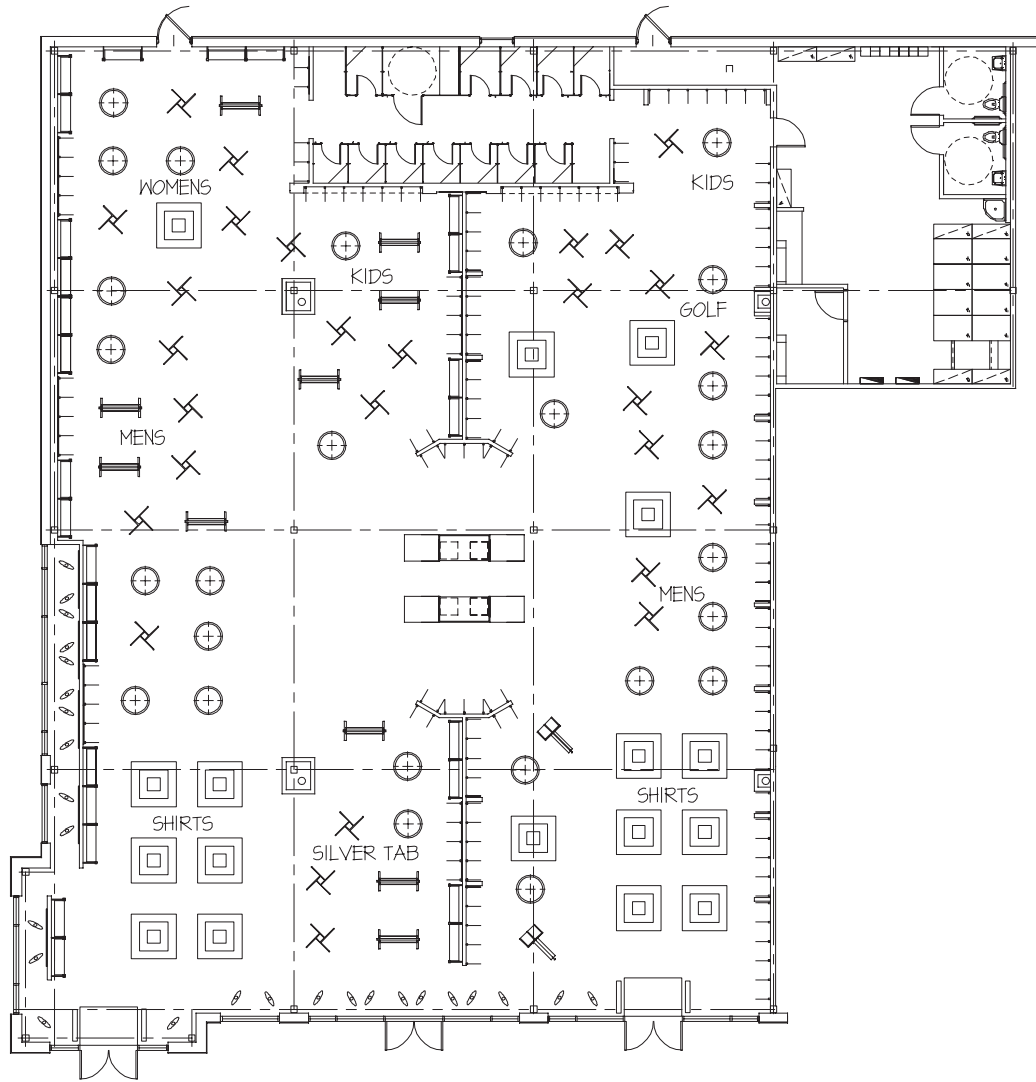




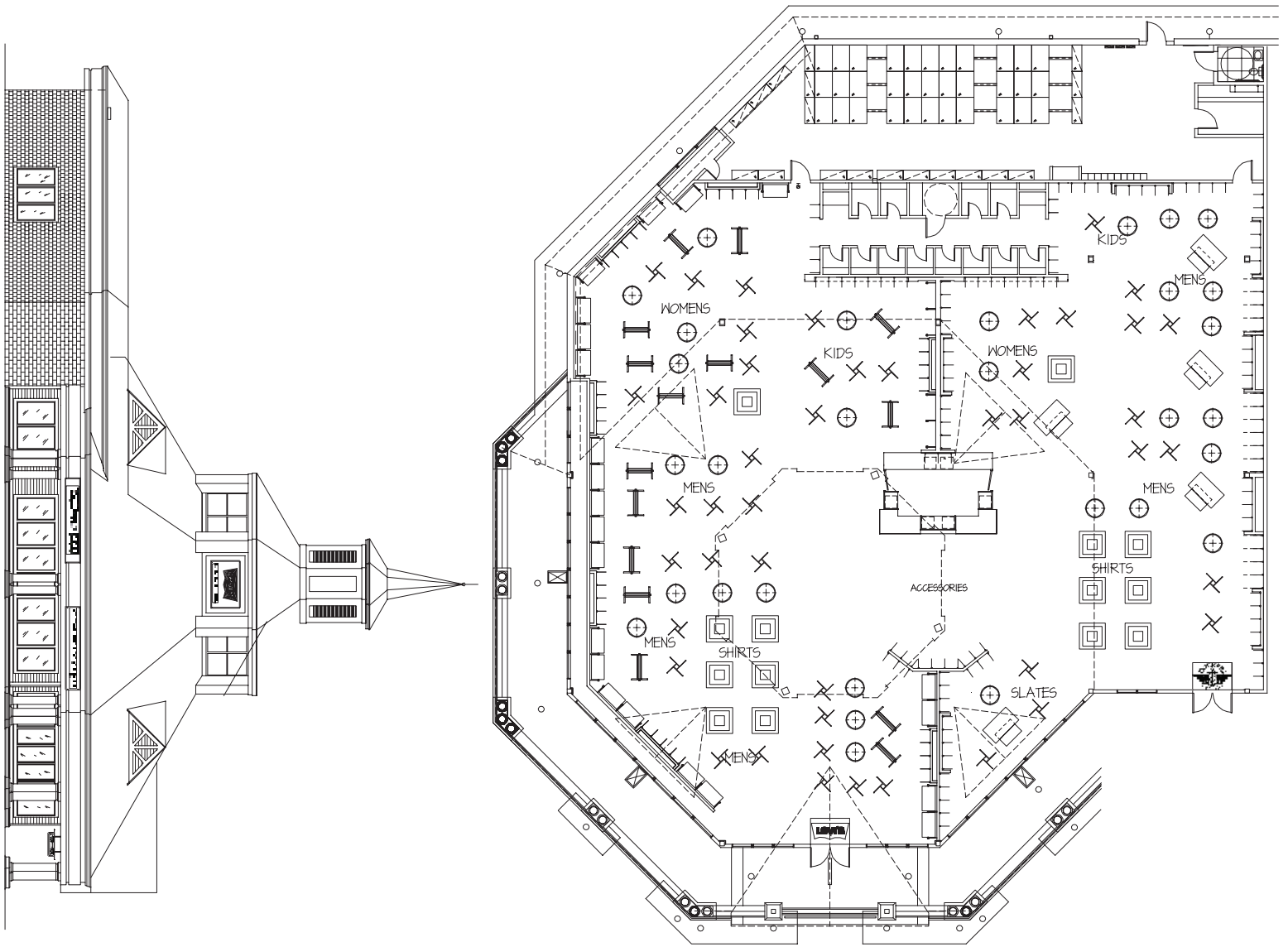
Outlet Stores

Locations:

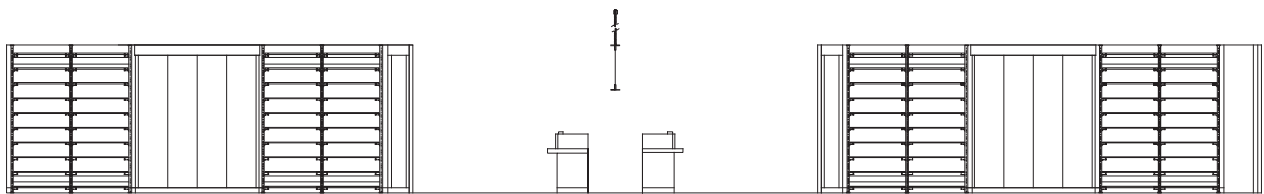
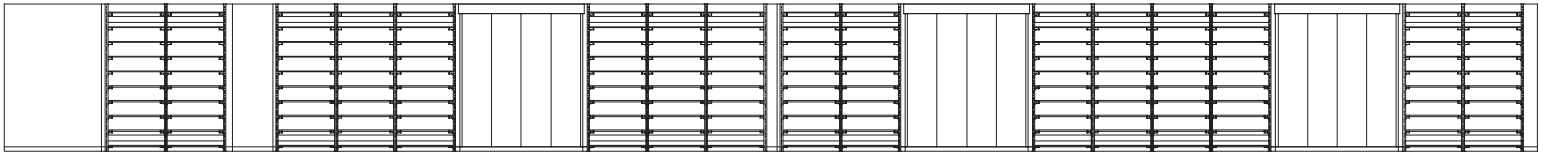
Kittery, Maine
Methuen, Massachusetts
Secaucus, New Jersey
Hanover, Maryland
Edinburgh, Indiana
Howell, Michigan
Lodi, Ohio
Hershey, Pennsylvania
Grove City, Pennsylvania
Gettysburg, Pennsylvania
Tannersville, Pennsylvania
Smithfield, North Carolina
Gaffney, South Carolina
Myrtle Beach, South Carolina
Seveirville, Tennessee
Locust Grove, Georgia
Lawrenceville, Georgia
Foley, Alabama
Bessemer, Alabama
Miami, Florida
Orlando, Florida
Elenton, Florida
Florida City, Florida
Vero Beach, Florida



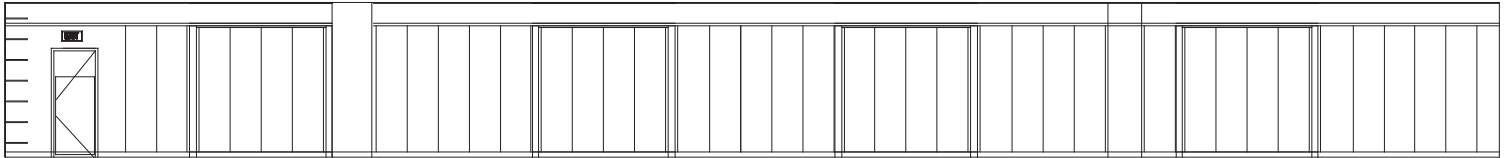
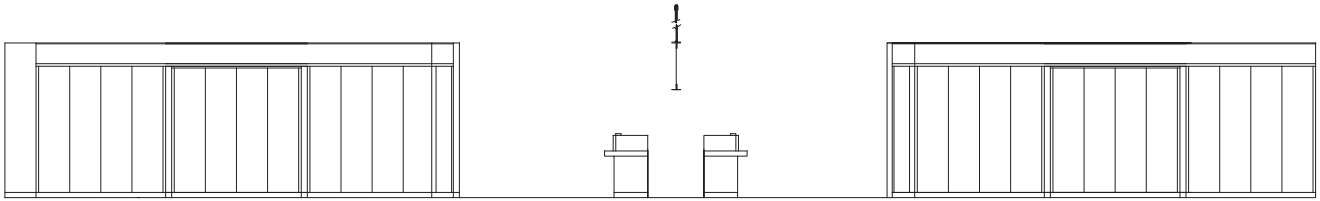
Levi's/Dockers Outlets



Levi's/Dockers Outlets



Levi's/Dockers Outlets



Levi's/Dockers Outlets

PARTITION TYPES

A LEVISOCKERS/SLATES
3 5/8" METAL STUDS WITH 5/8" TYPE "X" GNB BOTH SIDES. PROVIDE FTR FURRING AND BLOCKING TO 4'-4" AFF. (OR FTR PLYWOOD SHEATHING) AS REQUIRED FOR PANNELING AND FIXTURES. GNB TO 10'-0" AFF.

B LEVISOCKERS/SLATES FEATURE WALL
PROVIDE 3 5/8" METAL STUDS AND 5/8" TYPE "X" GNB ONE SIDE OF METAL STUD. PROVIDE FURRING, 4 5/8" FTR PLYWOOD SHEATHING FOR PANNELING AND FIXTURES TO 9'-6" AFF. GNB TO BE CONTINUOUS SURFACE EXTENDING TO 10'-0" AFF.

C DOCKERS FEATURE FIN WALL
PROVIDE 3 5/8" METAL STUDS, 1 LAYER TYPE "X" 5/8" GNB ON BOTH SIDES OF STUDS FOR FIN WALL TO 8'-4" AFF.

D DOCKERS FEATURE BACK WALL
EXISTING WALL WITH 5/8" SURFACE MOUNTED FTR PLYWOOD SHEATHING TO 8'-4" AFF. 1 LAYER 5/8" TYPE "X" GNB TO 8'-4" AFF.

E DOCKERS DOUBLE DEEP FEATURE BACK WALL
PROVIDE 3 5/8" METAL STUDS WITH 1 LAYER 5/8" FTR PLYWOOD SHEATHING TO 8'-4" AFF. 1 LAYER TYPE "X" 5/8" GNB TO 8'-4" AFF.

F LEVISOCKERS/SLATES TENANT DEMISING WALLS
EXISTING LANDLORD PROVIDED PARTITION TO REPAIR DEMISING PARTITIONS - MIN. 1 HOUR RATING. G.C. TO MAINTAIN INTEGRITY OF RATING.

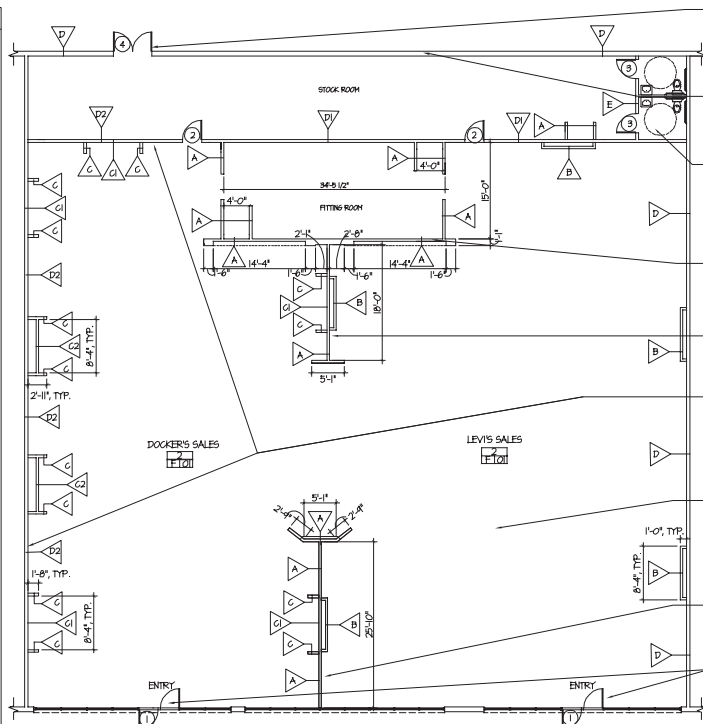
G SALES/STOCK DEMISING WALLS
ONE HOUR RATED WALL (UL LISTING - U465) 3 5/8" X 20 GA METAL STUDS AT 16" ON CENTER TO ROOF STEEL ABOVE WITH 5/8" TYPE "X" GNB ON EACH SIDE TO DECK ABOVE.

PROVIDE FIRE TREATED FURRING AND BLOCKING TO 4'-4" AFF. (OR FTR PLYWOOD SHEATHING) AS REQUIRED FOR PANNELING AND FIXTURES. REFER TO DTLS ON A6.1

H DOCKERS TENANT DEMISING WALLS
EXISTING PARTITION TO REPAIR. PROVIDE ONE LAYER 5/8" FTR PLYWOOD SHEATHING TO 8'-4" AFF. AND ONE LAYER 5/8" TYPE "X" GNB TO 8'-4" AFF. G.C. TO MAINTAIN INTEGRITY OF EXISTING FIRE RATINGS.

I EXISTING LANDLORD PROVIDED TOILET ROOM PARTITION.

NOTE: G.C. TO INSURE THAT ALL MATERIALS ARE FIRE TREATED AND MEET ALL LOCAL BLDG. CODES.
NOTE: PROVIDE FIRESTOPPING AS REQ'D.



DOORS/EGRESS/SERVICE
WHERE SHOWN ON PLANS, A MINIMUM OF ONE REAR SERVICE DOOR (42" X 84" H) WILL BE PROVIDED AS REQUIRED BY CODE.

STOCKROOM EXTERIOR HALL
PROVIDE 1/2" RIGID INSULATION AND 5/8" FIRE CODE GYPSUM WALLBOARD SIDES OF BUILDING EXTERIOR WALLS. LANDLORD SHALL PROVIDE INSULATION ON ALL INTERIOR SIDES OF BUILDING EXTERIOR.

TOILET ROOM(S)
A MINIMUM OF ONE HANDICAPPED ACCESSIBLE FACILITY AND ANY OTHER ADDITIONAL TOILET FACILITIES AS REQUIRED BY LOCAL CODE. ALL HARDWARE AND ACCESSORIES TO COMPLY WITH LOCAL/ADA REQUIREMENTS.

FITTING ROOM SURROUND WALL
THIS WALL SURROUND IS LOCATED PERPENDICULAR TO "FINER" WALL AND PARALLEL TO LANDLORD CONSTRUCTED STOCKROOM WALL.

SEINE WALLS
THIS WALL IS LOCATED PERPENDICULAR TO THE STOREFRONT. WALL SHALL BE FINISH TAPE AT ALL JOINTS, SANDED AND PREPARED FOR THE FINISH PAINT.

HALL BLOCKINGS
ON THE DOCKERS SIDE ONLY, 1/2" FIRE RETARDANT TREATED PLYWOOD SHEATHING AT DEMISING PARTITIONS AND SALES AREA PERIMETER WALLS.

FLOOR SLABS
SLAB FINISH SHALL HAVE STEEL TROWELED SMOOTH SURFACE. SLAB SHOULD MEET MINIMUM FLATNESS FF-20. SLAB TO BE SEALED.

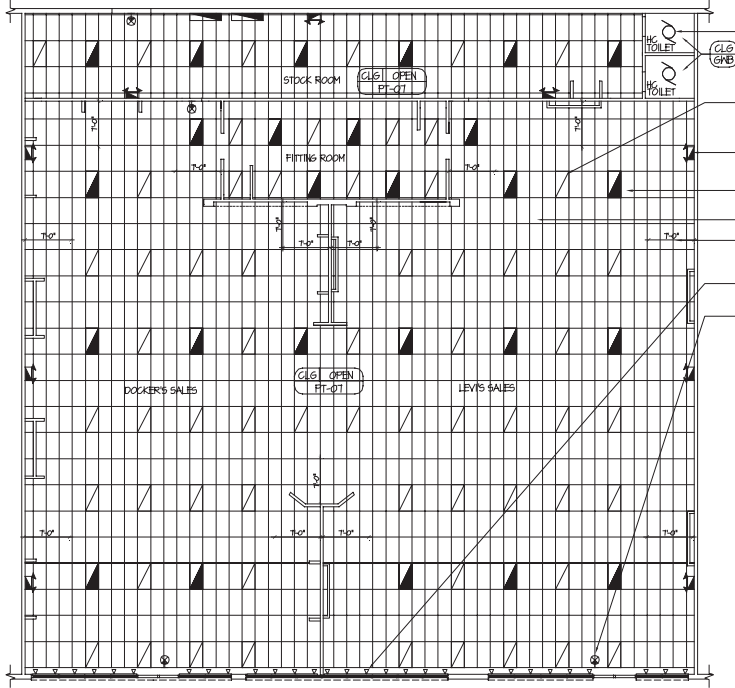
SEINE WALLS
THIS WALL IS LOCATED PERPENDICULAR TO THE STOREFRONT. WALL SHALL BE FINISH TAPE AT ALL JOINTS, SANDED AND PREPARED FOR THE FINISH PAINT.

STORE FRONT
STORE FRONT SHALL INCLUDE AT LEAST 50% OF GLAZED AREA OF TOTAL FRONT ELEVATION. PREFERRED ENTRY LOCATIONS-AS PER TENANTS REQUIREMENTS.

FINISH SCHEDULE			
MARK	DESCRIPTION	MANUFACTURER	REMARKS
F-01	SEALED CONCRETE STAIN SALES & FITTING ROOMS	"SEAL HARD" LHM CONSTRUCTION CHEMICALS, INC (800) 262-2931	CONTACT CUSTOMER SERVICE

DOOR AND HARDWARE SCHEDULE					
DOORROOM	SIZE	FRAME	QTY	REMARKS	
1	ENTRY SALES	(1FR) 3'-0" N x 7'-0" H	METAL	2	ALUM. & GLASS DOORS
2	STOCKROOM	3'-0" N x 7'-0" H	METAL	2	SEE OUTLINE FOR HARDWARE SPECIFICATIONS
3	TOILET	3'-0" N x 7'-0" H	METAL	2	SEE OUTLINE FOR HARDWARE SPECIFICATIONS
4	REAR EGRESS	(1FR) 3'-0" N x 7'-0" H	METAL	2	SEE OUTLINE FOR HARDWARE SPECIFICATIONS

WARRANTIES
LANDLORD TO PROVIDE ALL WARRANTIES OR GUARANTEES ON LANDLORD SUPPLIED EQUIPMENT INCLUDING HVAC WITHIN 30 DAYS OF EQUIPMENT INSTALLATION. THE LANDLORD WILL GUARANTEE ALL WORK PERFORMED BY LANDLORD CONTRACTORS FOR A PERIOD OF ONE (1) YEAR AGAINST ALL DEFECTS IN EQUIPMENT AND/OR WORKMANSHIP. WHERE EQUIPMENT IS PROVIDED WITH MANUFACTURER'S WARRANTY, LANDLORD SHALL PROVIDE COPIES OF THE SAME TO THE TENANT.



LANDLORD SUPPLIED TOILET LIGHT/FAN. QUANTITY TO BE DETERMINED PER LOCAL CODES AND ORDINANCES. TYP.

LANDLORD SUPPLIED 2' x 4' LIGHTING FIXTURES. TYP.

LANDLORD SUPPLIED EMERGENCY EXIT LIGHTS. QUANTITY TO BE DETERMINED PER LOCAL CODES AND ORDINANCES. TYP.

LANDLORD SUPPLIED 2' x 4' NIGHT LIGHT LIGHTING FIXTURES. TO BE CIRCUITED TO A DEDICATED CIRCUIT. TYP.

OPEN 2' x 4' "T-BAR" OPEN GRID SYSTEM.

MAINTAIN A T-0" BOUNDARY AT PERIMETER WITHIN THE SALES AREA IN ORDER TO ACCOMMODATE TRACK LIGHTING TO BE SUPPLIED BY TENANT AT TENANT'S EXPENSE.

LANDLORD SUPPLIED PAR HEAD TRACK LIGHTING FIXTURES AT STOREFRONT. (TYP) TRACK TO BE HELD TIGHT TO STOREFRONT.

LANDLORD SUPPLIED EXIT SIGNS. QUANTITY TO BE DETERMINED PER LOCAL CODES AND ORDINANCES. TYP.

NOTES

DECK PAINTING:
ALL CEILING ELEMENTS AND ADJACENT WALLS FROM 10'-0" AFF AND ABOVE ARE TO BE SPRAY PAINTED BENJAMIN MOORE #605, FLAT FINISH.

FIRE PROTECTION SYSTEM:
LANDLORD SHALL PROVIDE AT LANDLORD'S EXPENSE A COMPLETE NET FIRE PROTECTION (SPRINKLER) SYSTEM FOR ORDINARY HAZARD USAGE, AS REQUIRED BY LOCAL AUTHORITIES AND NFPA #3 CRITERIA. LANDLORD SHALL PROVIDE AT LANDLORD'S EXPENSE A COMPLETE FIRE ALARM SYSTEM INCLUDING ALL PULL STATIONS, HORNS, STROBES, AND ANNUNCIATOR PANELS.

ELECTRICAL:
A COMPLETE ELECTRICAL SYSTEM, INCLUDING ALL LIGHTING PER REFLECTED CEILING PLAN AND LIGHT SCHEDULE (EMERGENCY AND NIGHT LIGHTING INCLUDED), POWER, DISTRIBUTION AND PROVISIONS FOR TENANTS' DEDICATED CIRCUITS, AND SOUND SYSTEM. ELECTRICAL SERVICE SHALL BE A MINIMUM OF 200 AMPS FOR STORE USE AS LIGHTING. A SEPARATE PANEL FOR ADDITIONAL AMPS REQUIRED TO POWER LANDLORD PROVIDED HVAC SYSTEM. ALL ELECTRICAL WIRING SHALL BE IN CONDUITS.

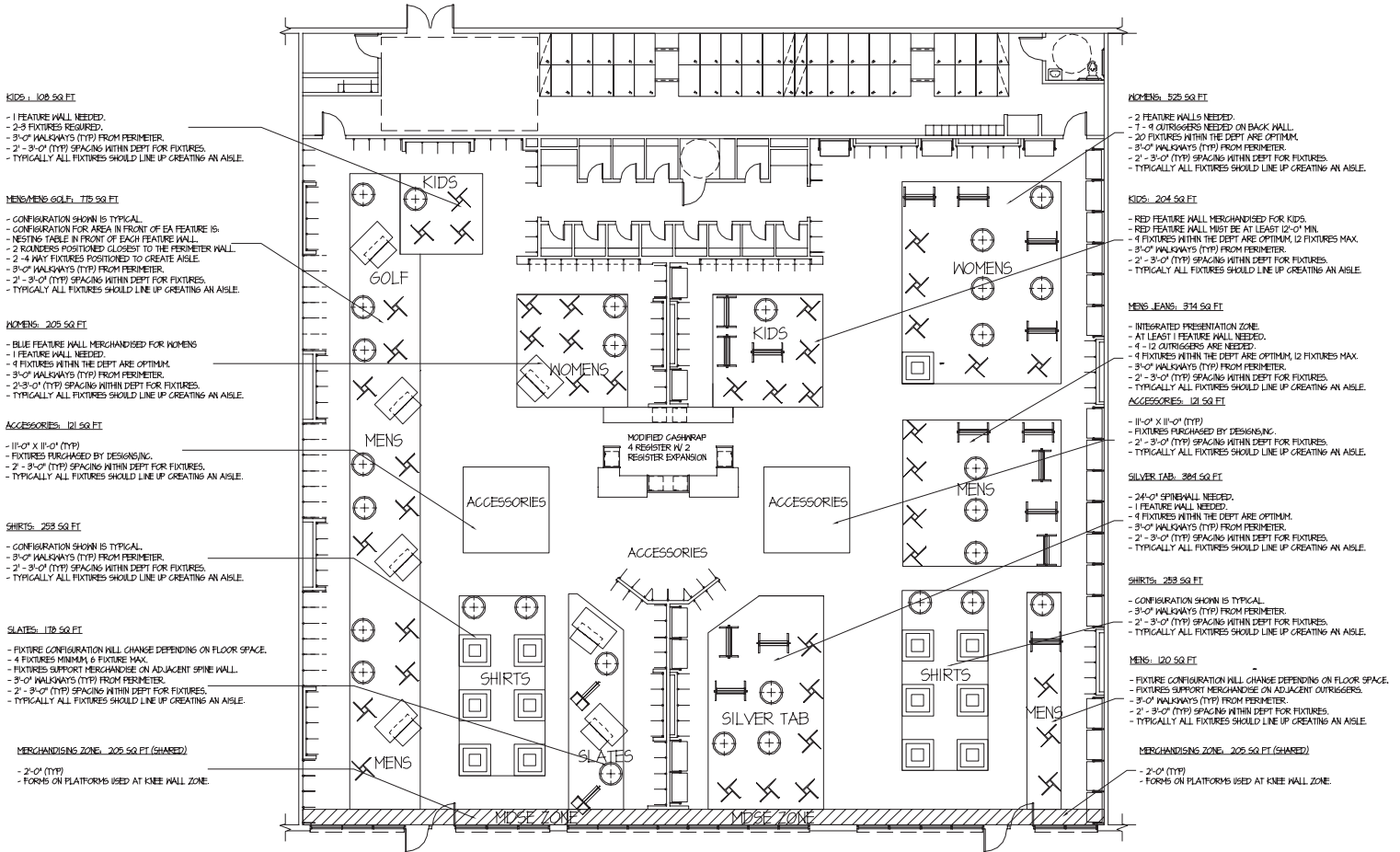
HEATING, VENTILATION AND AIR CONDITIONING:
A COMPLETE HVAC SYSTEM WHICH SHALL PRODUCE A MINIMUM OF ONE TON PER 275 SQUARE FEET SHALL BE PROVIDED. THE HVAC SHALL BE RUN OFF OF A SEPARATE ELECTRICAL PANEL. (ALL DUCTWORK TO BE SPIRAL AND EXTEND THROUGH STOCKROOM WALL INTO BACKROOM.) WITH REGARD TO HVAC EQUIPMENT, LANDLORD SHALL ALSO PROVIDE ALL MAINTENANCE AND OPERATION MANUALS, AND SHALL RESTRICT STORE PERSONNEL IN THE MAINTENANCE AND OPERATION OF ALL LANDLORD-FURNISHED EQUIPMENT.

WARRANTIES:
LANDLORD TO PROVIDE ALL WARRANTIES OR GUARANTEES ON LANDLORD SUPPLIED EQUIPMENT INCLUDING HVAC WITHIN 30 DAYS OF EQUIPMENT INSTALLATION. THE LANDLORD WILL GUARANTEE ALL WORK PERFORMED BY LANDLORD CONTRACTORS FOR A PERIOD OF ONE (1) YEAR AGAINST ALL DEFECTS IN EQUIPMENT AND/OR WORKMANSHIP. WHERE EQUIPMENT IS PROVIDED WITH MANUFACTURER'S WARRANTY, LANDLORD SHALL PROVIDE COPIES OF THE SAME TO THE TENANT.

FINISH SCHEDULE			
MARK	DESCRIPTION	MANUFACTURER	REMARKS
PT-01	PART BEAD-BLAST 1 WALLS ABOVE 10'-0" AFF.	BENJAMIN MOORE (COLOR: #605 MEDIUM GREY)	SATIN FINISH

LIGHT FIXTURE SCHEDULE		
SYMBOL	DESCRIPTION	REMARKS
□	WALL MOUNTED EXIT SIGN	QUANTITY TO BE DETERMINED PER LOCAL CODES AND ORDINANCES.
⚡	WALL MOUNTED EMERGENCY LIGHTS	QUANTITY TO BE DETERMINED PER LOCAL CODES AND ORDINANCES.
⊙	TOILET LIGHT/FAN	QUANTITY TO BE DETERMINED PER LOCAL CODES AND ORDINANCES.
▽	PAR HEADS FOR TRACK LIGHTING @ STOREFRONT	FOR USE AT STOREFRONT.
□	2 X 4 FLOURESCENT LIGHTING	LOCATED IN SALES AREA AND STOCKROOM
■	2 X 4 FLOURESCENT LIGHTING (NIGHT LIGHT)	LOCATED IN SALES AREA AND STOCKROOM

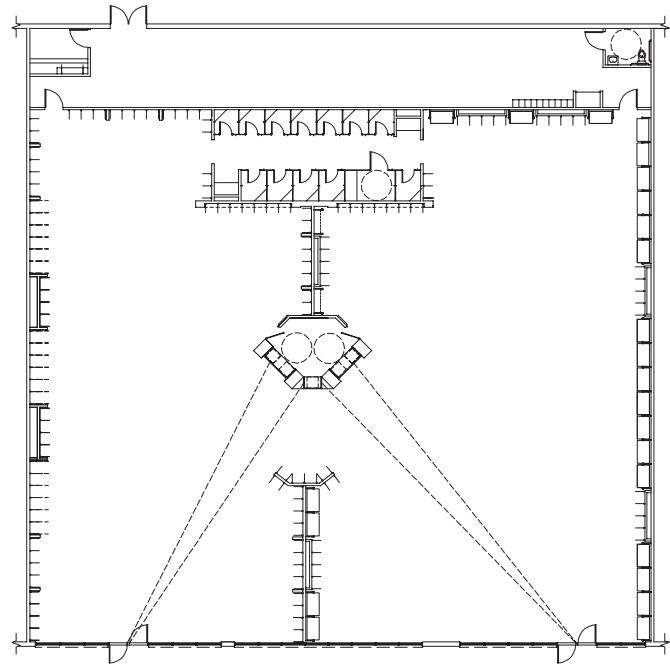
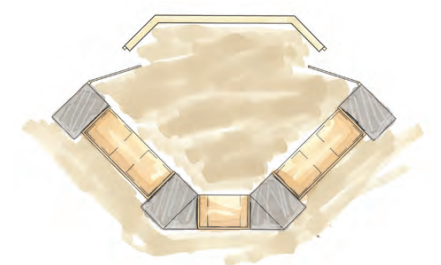
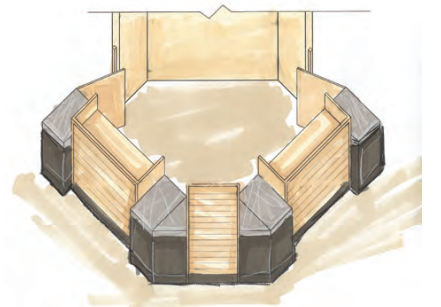
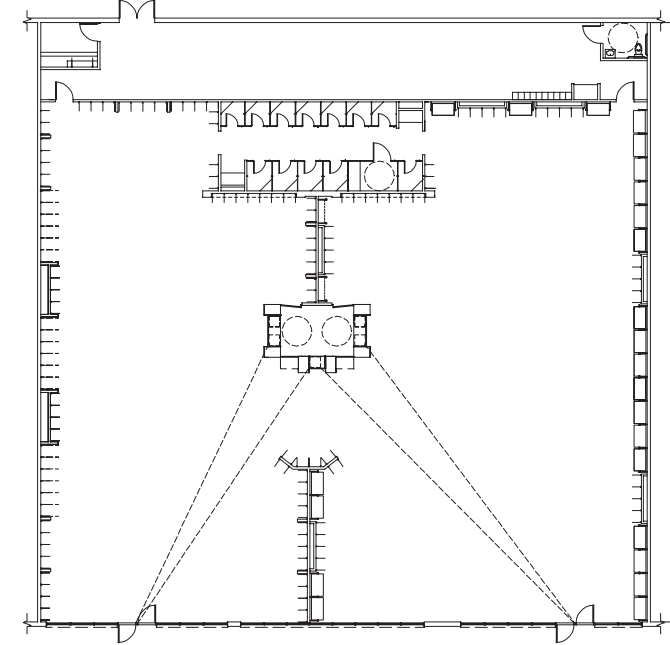
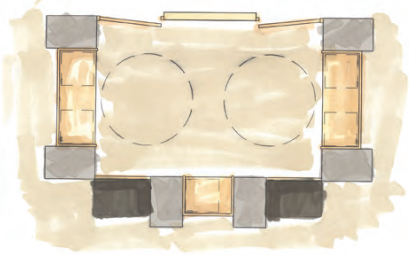
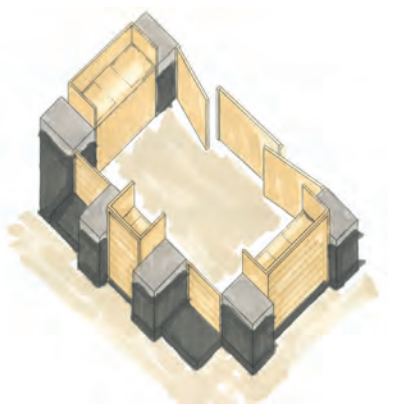
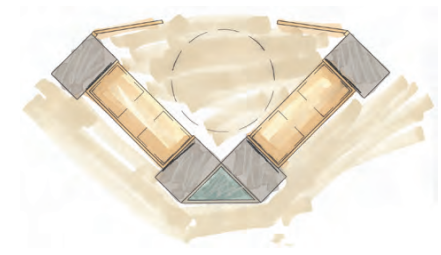
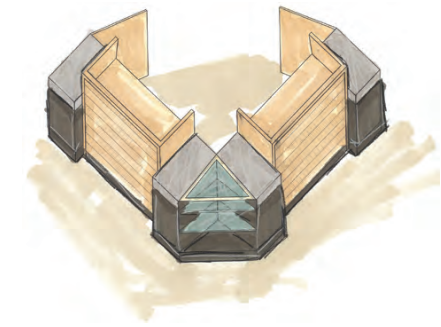
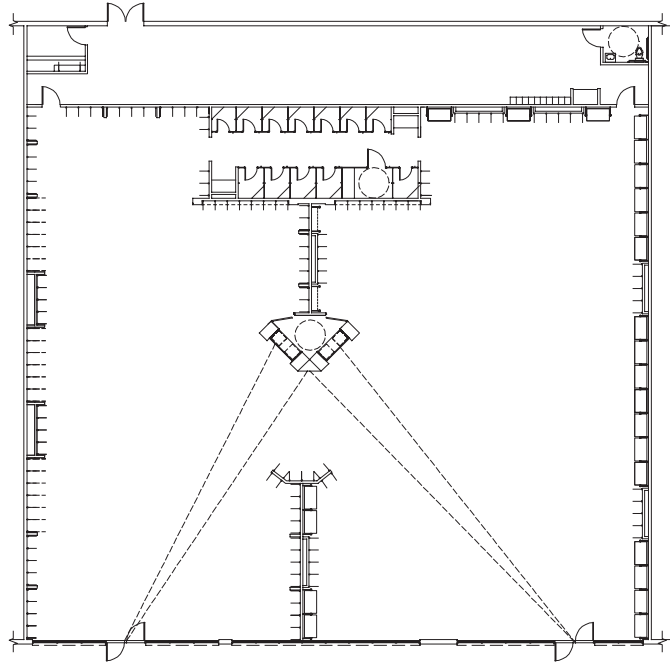
DEPARTMENT	FLOOR S.F.	WALL S.F.	DEPARTMENT	FLOOR S.F.	WALL S.F.
LEVIS - MENS	1020	600	DOCKERS - MENS	1000	160
LEVIS - SHIRTS	450	N/A	DOCKERS - SHIRTS	450	N/A
LEVIS - SILVER TAB	830	240	DOCKERS - GOLF	520	120
LEVIS - KIDS	495	300	DOCKERS - KIDS	300	280
LEVIS - WOMENS	1710	580	DOCKERS - WOMENS	480	300
LEVIS - ACCESSORIES	485	100	DOCKERS - ACCESSORIES	485	100
SLATES - (IF APPLICABLE)	365	240	DOCKERS - WRINKLE FREE	N/A	520



PROTO-TYPE FIXTURE MERCHANDISING PLAN

FIXTURE LEGEND

FIXTURE	NAME	STORE QTY.			FIXTURE	NAME	STORE QTY.			FIXTURE	NAME	STORE QTY.							
		LEVIS	DOCKERS	SLATES			LEVIS	DOCKERS	SLATES			LEVIS	DOCKERS	SLATES					
	ROUNDER (ON CASTERS)	15	12	2		THREE TIER TABLE	6	6	-		LEVIS 48" OUTRIGGER SYSTEM SHELVING BAY	26	-	-		SLATES HANG & FOLD FIXTURE	-	-	2
	4' 11" FIXTURE (ON 8 PERP. METAL SHELVES)	16	-	-		LARGE TABLE & NESTING TABLE	-	5	2		LEVIS - KIDS 48" OUTRIGGER SYSTEM SHELVING BAY	-	-	-					
	FOUR WAY FIXTURE (ON CASTERS)	23	11	-															



Cashwrap Study