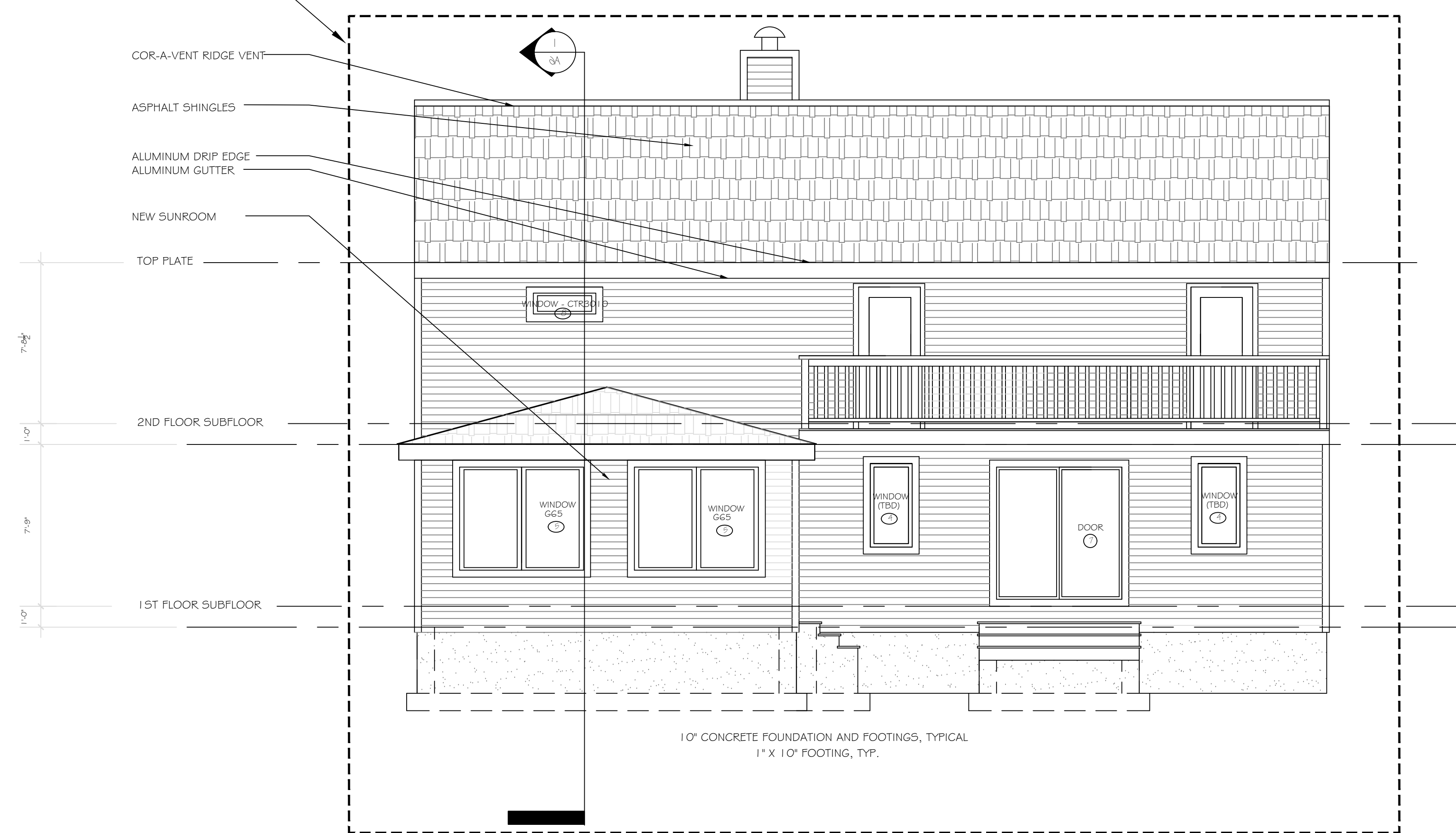


EXTERIOR ELEVATION (FRONT)  
1/4" = 1'-0"

1  
A5

SCOPE OF NEW WORK



EXTERIOR ELEVATION (BACK)  
1/4" = 1'-0"

2  
A5

**NOTES**  
1. ALL WINDOWS SHOWN ARE ANDERSEN WINDOWS - PERMA SHIELD WITH HIGH PERFORMANCE INSULATING GLASS.

PROJECT  
ADDITION/ RENOVATION  
WILMINGTON, MA 01887

EXTERIOR ELEVATIONS

REVISIONS

#	DATE	DESCRIPTION

DRAWING INFORMATION  
DATE: 09.30.2005  
SCALE: 1/4" = 1'-0"  
DESCRIPTION: PERMIT/ CONSTRUCTION

SHEET NUMBER

A5



