

---

# MEDITEK®

## Modular & Seamless Operating Room Systems



#SmartSolutions  
...since 1953!

Sun Narula Group

---

**MEDITEK™ Operating Room Systems [OR Systems]** are offered by **SNG** [aka **Sun Narula Group**] engaged in healthcare solutions since 1953. Historically, the group has been engaged in providing OR Systems to some over 1200 hospitals. In the recent years, has been engaged in hundreds of Operating Rooms, ICUs & ERs and to turnkey hospital projects to some of the leading healthcare providers in India and South Asia.

With complete in-house design team **SNG** is competently placed to provide the most aptly designed bespoke solutions to its customers considering their architectural, structural, logistical & budgetary requirements. **SNG** has experienced, strong & expert in-house design, project's management & customer support teams, to ensure unmatched support to its clients, right from design to commissioning and after sales support, with a dedicated & centralized **SNG** Customer Care Centre.

Our customer support teams are located in Delhi, Mumbai, Chennai, Kolkata, Bangaluru, Hyderabad, Pune, Amdavad, Coimbatore, Vizag, Manipal, Kochi, Kathmandu & Colombo, with reach to all the corners of India & beyond to ensure quick response. SNG also has access facility via internet for remote diagnosis & serviceability.

Apart from the customer support, regular training sessions are also accorded to end users and their engineers for system's applications, operations, day-to-day trouble shooting & maintenance.



*All specifications and standards shown are updated and improved regularly and are subject to change without prior notice. Refer to updated datasheets.*



A219 Road No 6  
Mahipalpur NH8  
New Delhi 110037  
India

**www.sngindia.org**  
**customercare@sngindia.org**  
**+91 98100 07700**



**Srishty Medical Private Limited**





# Complete Solution

**MEDITEK® Modular & Seamless OR Systems** are offered on turn-key basis, right from concept, designing, supply, erection and commissioning. The Systems conform to the best international standards such EN, CE, DIN & ISO Class 10000 clean room solutions and may including *Wall & Ceiling panels, anti-static flooring, internal OR Medical Gas Pipeline System, Hermetically sealing motorised or manual doors, ceiling supply pendants, integrated technical and storage units, OR control panels, ceiling plenum with peripheral lighting and laminar flow systems, surgical lights, OR video routing and archiving [OR integration], HVAC ducting, OR electrical distribution panel and wiring, OR video routing and archiving [integration]* etc.

With complete in-house design team **SNG** is competently placed to provide the most aptly designed bespoke solutions to its customers considering their architectural, structural, logistical & budgetary requirements. **SNG** has experienced, strong & expert in-house design, project's management & customer support teams, to ensure unmatched support to its clients, right from design to commissioning and after sales support, with a dedicated & centralized **SNG** Customer Care Centre.

We have direct presence in **Delhi, Mumbai, Chennai, Kolkata, Bangaluru, Hyderabad, Pune, Amdavad, Coimbatore, Vizag, Manipal, Kochi, Kathmandu & Colombo**, to all the corners of India & beyond to ensure quick response.



All specifications and standards shown are updated and improved regularly and are subject to change without prior notice. Refer to updated datasheets.

**#Smart Solutions**  
...since 1953!



**SNG**  
Sun Narula Group

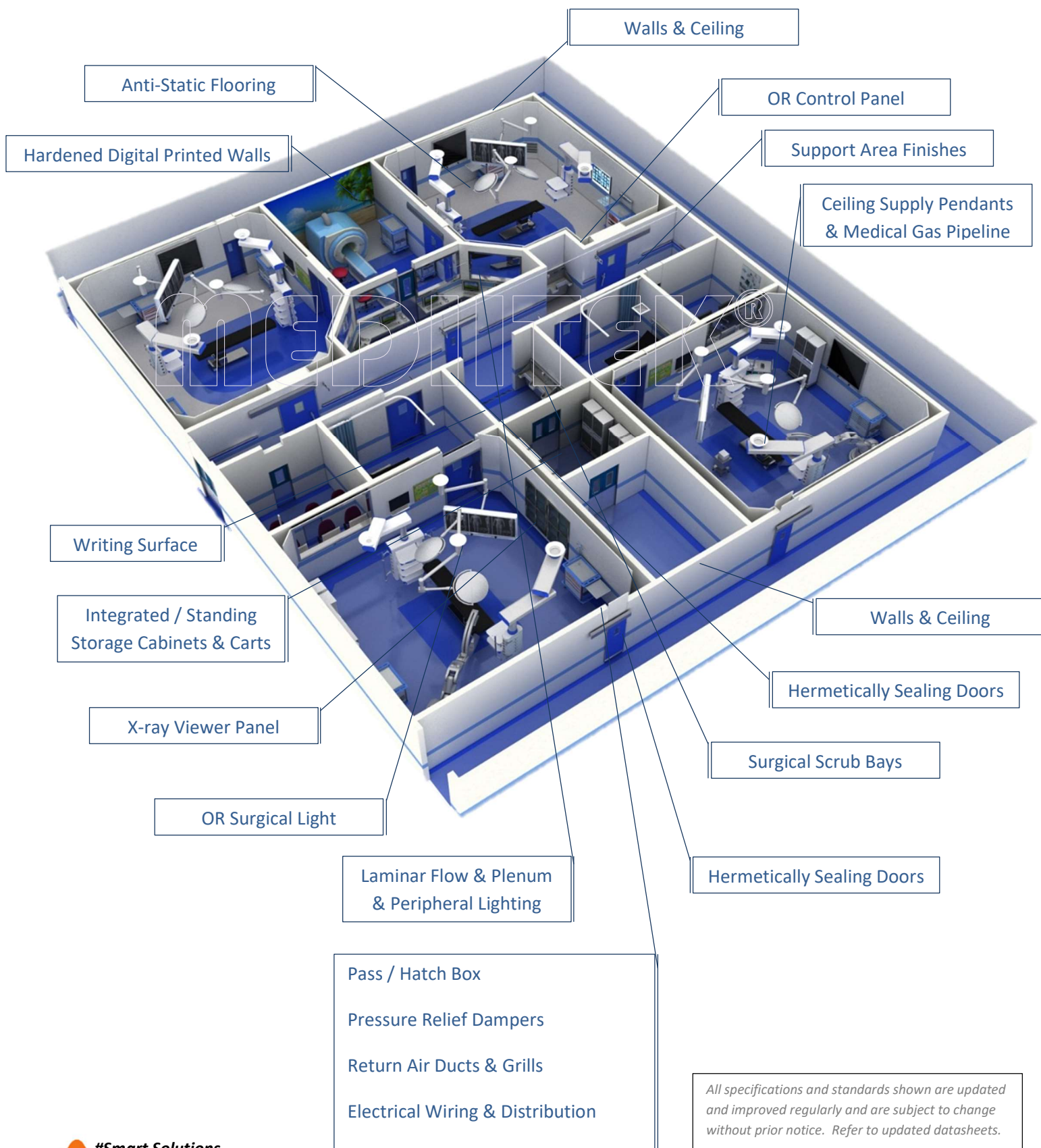
A219 Road No 6  
Mahipalpur NH8  
New Delhi 110037  
India

**www.sngindia.org**  
**customercare@sngindia.org**  
**+91 98100 07700**

**Srishty Medical Private Limited**



# Basic Components in a **MEDITEK®** OR



All specifications and standards shown are updated and improved regularly and are subject to change without prior notice. Refer to updated datasheets.





# OR Wall Panels Prefabricated Galvanised / Stainless Steel - Seamless



The **MEDITEK®** Pre-fab Seamless Steel Operation Theatre Panel systems are available in either Galvanised EGP Steel Sheets [1.5-1.6mm thickness] or 304G Stainless Steel Sheet [1 -1.2mm thickness]. The Steel walls and ceiling panels are reinforced with 9mm/12mm thick gypsum boards or Puff Foam filled, to provide seamless operation room, providing minimal crevices and gaps. The sheets are welding together with state-of-the-art welding solutions in the industry [more popularly spot-welding]. All joints are filled with metal filler and sand flushed at site. The surfaces are finished with special anti-bacterial, anti-microbial & anti-fungal paint coatings as per customers choice of RAL colours.

*All specifications and standards shown are updated and improved regularly and are subject to change without prior notice. Refer to updated datasheets.*



A219 Road No 6  
Mahipalpur NH8  
New Delhi 110037  
India

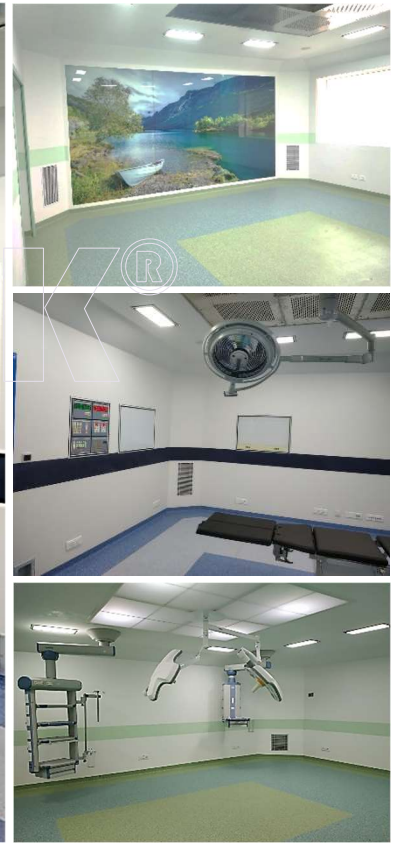
**www.sngindia.org**  
**customercare@sngindia.org**  
**+91 98100 07700**



**Srishty Medical Private Limited**



# OR Wall NMA Panels Natural Mineral Solid Mineral Surface - Seamless



The **MEDITEK®** NMA Panels are made with Solid Mineral Surface [SMS Natural Mineral Acrylic] is a non-toxic homogenous material most suitable for clean and surgical spaces for walls. NMA sheet applied for walls and ceiling is sturdies and stronger 12mm thick Sheet and cladding on to an Aluminium Grid Support of 25mm x 50mm x 2mm – robust and strong back support. The NMA Wall Cladding system provides a controlled ant-bacteria environments with seamless, scratch resistant, chemical resistant, ant-microbial & non-porous outer Wall surface. Various colour options with combinations are in the available to choose from to provide soft, soothing surgical spaces.

Any cuts, scratches, or stains are easily removed simply by sanding & buffing – least down time periods. The surface is bacteriostatic that is easy to clean and extremely hygienic. The NMA panels provide optimal structural properties in terms of flatness, low weight, and rigidity and able to withstand repeated cleaning with hospital disinfectants without any degradation to the surface finish or performance. All corners and shar edges are curved to avoid bacterial / fungus contamination. Coving is provided to overlap the wall, floor and ceiling panel enables continuous seamless smooth surface. The NMA Solid Mineral Surface is composed of  $\pm 1/3$  acrylic resin [also known as Polymethylmethacrylate or PMMA], and  $\pm 2/3$  natural minerals with main ingredient as mineral Aluminium Trihydrate [ATH]. The NMA SMS conforms to:

- ASTM G21
- ASTM G22
- FDA regulation 177.1010
- EN DIN ISO 846
- NSF 51
- UL 2824 Microbial Resistant



*All specifications and standards shown are updated and improved regularly and are subject to change without prior notice. Refer to updated datasheets.*

**Srishty Medical Private Limited**



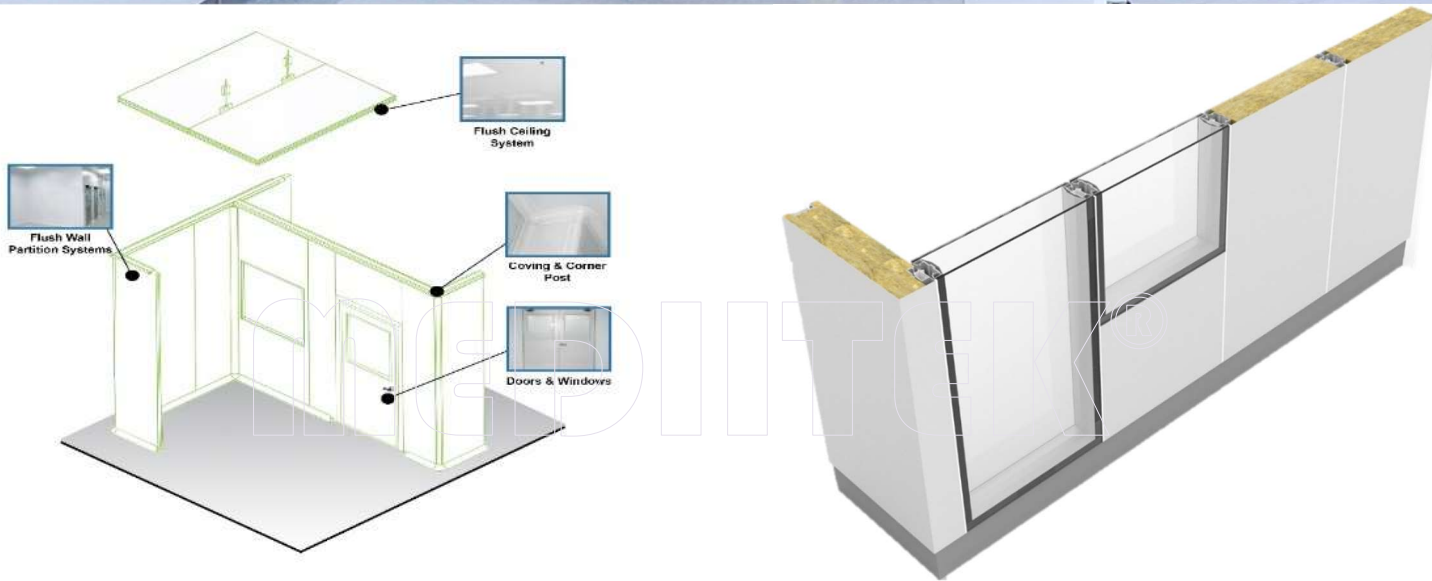
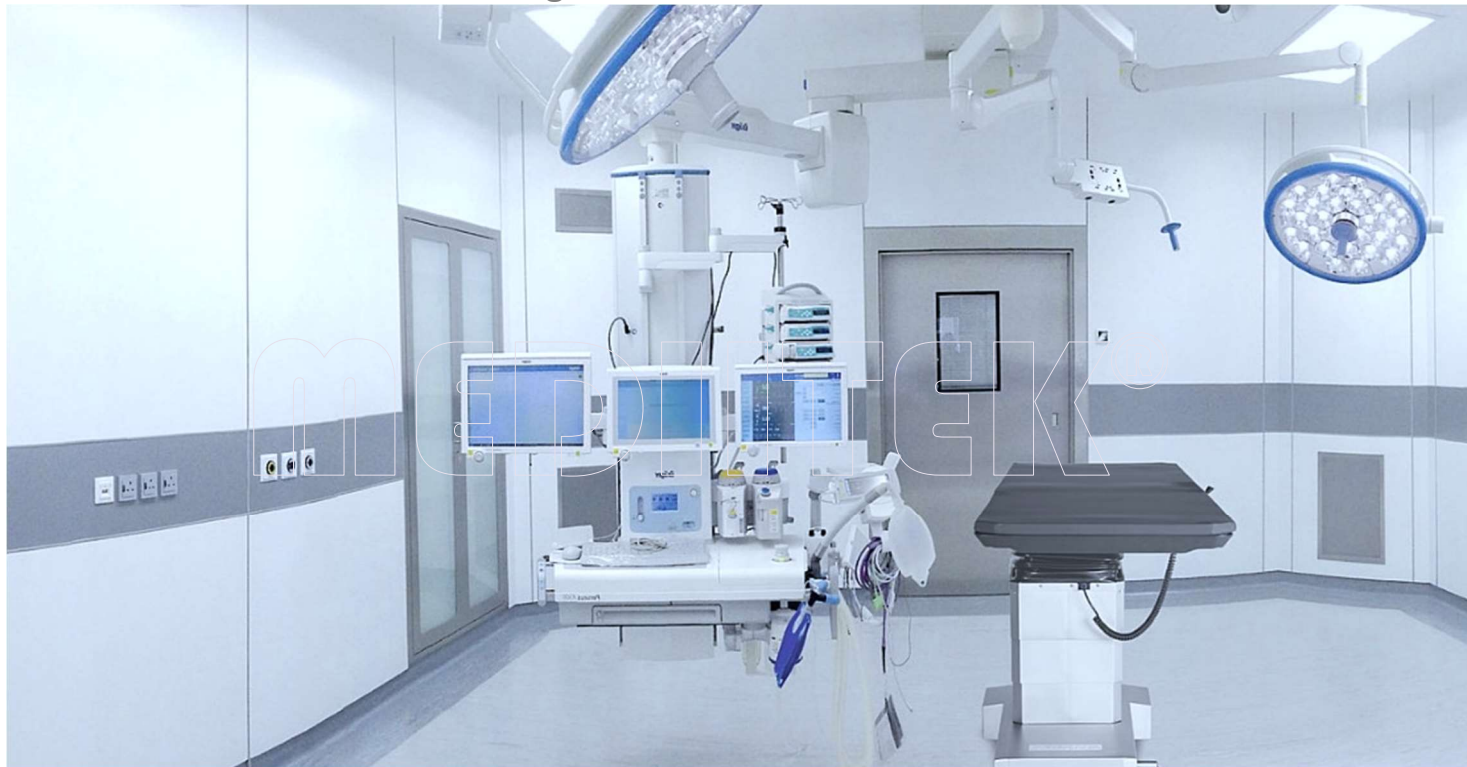
A219 Road No 6  
Mahipalpur NH8  
New Delhi 110037  
India

**www.sngindia.org**  
**customercare@sngindia.org**  
**+91 98100 07700**





# OR Wall Puff Panels High Pressure Laminate / PPGI / SS Panel – Modular



The prefabricated Operating Room **MEDITEK®** Panels are made using either High Pressure Laminate [HPL] Sheets or PPGI GI Sheets or SS 304 Sheets and combinations thereof and designed with minimum number of junctions. The Panels are made with GI Steel Sheet or SS Steel Sheet [1.5mm thick] backed by 12mm gypsum board fixed by grouting on the finished and plastered masonry walls of the Operating Room. The Panels are smooth finished as per choice of colour coating of >300microns including priming and finishing. The junctions are sealed with suitable sealants. The Panels are designed to have a flush finish with covered corners for easy cleaning. Filling of all joints and cavities with metallic epoxy filler and sanded flushed to provide a jointless/seamless finish sprayed with a water based liquid plastic aseptic and self-sterilizing wall coating system. Overall thickness of each panel can be between 45 – 50mm.

*All specifications and standards shown are updated and improved regularly and are subject to change without prior notice. Refer to updated datasheets.*



A219 Road No 6  
Mahipalpur NH8  
New Delhi 110037  
India

[www.sngindia.org](http://www.sngindia.org)  
[customercare@sngindia.org](mailto:customercare@sngindia.org)  
+91 98100 07700



# OR Wall Panels Stainless Steel – Modular



**MEDITEK®** Stainless Steel Panels are made of High-quality Stainless Steel 304 in technical collaboration with SonneMed [Germany] are easy to clean and disinfect. The Steel panels can be quickly removed and installed with quick assembly and dismantling that enables easier future expansions and changes. The SS Sheets are 1.5-1.6mm thick and reinforced with steel grid. The Panels can be either SS matte finish or in antimicrobial / antibacterial paint coatings with options of colours from RAL pallet. The gaps are filled silicon gaskets provided completely sealed environment.

*All specifications and standards shown are updated and improved regularly and are subject to change without prior notice. Refer to updated datasheets.*



A219 Road No 6  
Mahipalpur NH8  
New Delhi 110037  
India

**www.sngindia.org**  
**customercare@sngindia.org**  
**+91 98100 07700**





# OR Hardened Glass Panels with Digital Printing



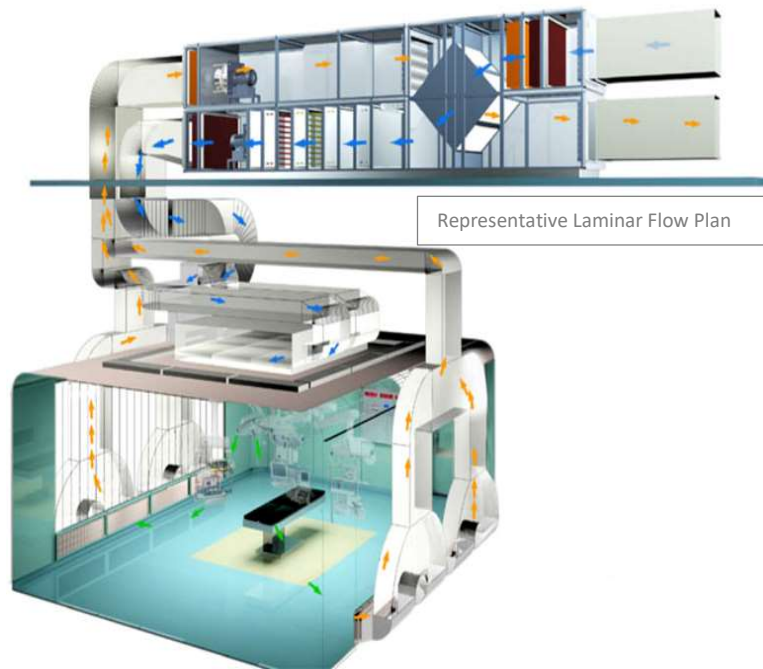
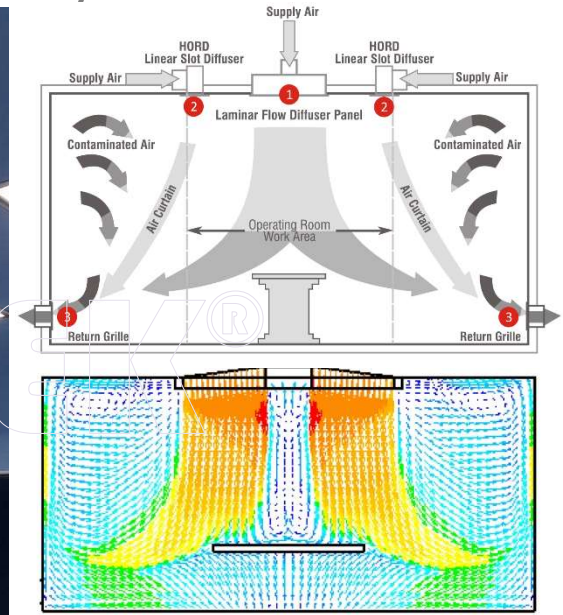
**MEDITEK®** Hardened Glass Panel are offered with digital printing for Operation Room walls are offered creating soft and soothing surgical spaces in a hospital. A wide range of high-resolution digital image library is available which is continuously updated.

*All specifications and standards shown are updated and improved regularly and are subject to change without prior notice. Refer to updated datasheets.*





# OR Ceiling Plenum Unit & Laminar Flow Systems



Material	Steel / Aluminium	Temperature	21 +/- 3 Dec C as per NABH guidelines
Built Type	Modular	Humidity	40 - 60 %
Particle Retention	0.3 micron	Pressure	Minimum 15 pascals
Class	Class 100 at grill level as per NABH guidelines	Air changes	Minimum 20 Air changes per hour
		Velocity	90 +/- 20 % FPM



Laminar flow ventilation comprises a continuous flow of highly filtered ultraclean air (UCA) of less than 10 colony-forming units per meter cubed (cfu/m<sup>3</sup>) of bacteria. This is re-circulated under positive pressure into the operating theatre with surgically generated contaminants being continuously removed. Each **MEDITEK®** OR Ceiling Plenum is carefully designed with Steel sheet with Laminar Air-Flow Ceiling Unit fitted with H14 HEPA Filters with high spot efficiency of 99.99% 0.3 microns in accordance with NABH Guidelines and in compliance with DIN1946 & DIN4799. Air & light diffuser is made of 2-layered mono filament precision woven polyester for indirect day-lighting system with controls and Plannair ceiling to give a laminar flow of filtered air in conformity to HTM 03091 to achieve Class 100 clean room environment. The design allows low velocities of air-flow with lateral mix and adjacent layers slide past one another preventing cross currents. The Laminar flow units are available in standard sizes of 1800x1800mm & 2400x2400mm – other customized sizes also can be constructed, suit different OR requirements.

*All specifications and standards shown are updated and improved regularly and are subject to change without prior notice. Refer to updated datasheets.*





## OR Anti-Static & Conductive Flooring



### Ant-Static PVC Flooring

Seamless antistatic conductive flooring system is offered generally with 2mm thickness [other thickness also available], with perfectly curved flash covings, all joints are welded as per the colour and pattern. The tiles are laid on the smooth sub floor done with a suitable self-levelling compound. Non-slip, smooth, impervious PVC material is conductive enough to dissipate static electricity, without engendering personnel from static electric shocks. Continuous rolls are used and joints are welded by special PVC thermal welding units using PVC welding bars of same colour. Highly durable flooring is resistant to shock and indentation, scratch resistant and with uniformly impregnated grains. The PVC flooring is inert to body fluids, chemicals and disinfectants and have low temperature variation effect. The conductive copper grid laid underneath the PVC sheet is supported by liquid epoxy compounds allowed set levelled uniformly.

### FRP Flooring

Conductive synthetic seamless FRP [Fibre-glass reinforced plastic] to cover the Operation Theatre floor with an overall finished thickness of 6mm including corner coving up to bottom of the wall panel. Flooring is laid over conductive 50x0.5mm wide copper strips laid in suitable grids for LV leakage. Flooring layer consists of epoxy resin over the leveled grano finished surface and providing two layers of 1mm thick fibre reinforced glass sheets and top finished with two layer of selected colour pigmented epoxy resin.

FRP Offers high durability and strength, as well as reliable resistance to corrosion, FRP is long-lasting and mitigates the need for ongoing maintenance.

*All specifications and standards shown are updated and improved regularly and are subject to change without prior notice. Refer to updated datasheets.*



# MEDITEK® Touch Screen OR Control Panel



**MEDITEK®** Touch Screen Control Panel is a robust control panel for ORs with a 27" high resolution [4096x4096] screen with wide view angle [170°], that is custom-configurable and can display and provide controls for:

- Surgical Procedure Elapsed Time
- Anesthesia Countdown Time
- Real Time Clock & Date
- \*Temperature & Humidity
- Medical Gas Alarm
- Peripheral & Plenum Light Control [optional brightness control]
- HEPA Filter Status
- \*Hands Free Telephone
- \*Music

Transmittance	>83%
Click lifetime	>2,000,000 times [single click]
Drawing lifetime	>300,000 times
Touch pressure	10g-100g
The surface hardness	3H
Viewing Angle	170°
Brightness	1000 cd/m
Operating System	Android

## Advantages of **MEDITEK®** Touch Screen Control Panel

- High contrast & High luminance
- Robust Construction
- DICOM Standard, ensuring the accuracy of medical image
- Stable back light system, supporting the integration of the long- lasting usage.
- LED back light, ultra-thin and full-flat screen design
- Ant-scratch glass prevents damage while cleaning and disinfecting
- Highly sensitive and high touch accuracy, more than 10,000 points per square inch.
- Automatic adjustment, high response speed, reliability and stability without drift, more than 5 million times touch control in each point
- Work with fingers, soft pen and can be used even with gloves/ when hands are wet.
- Display Tiles are customizable\*

*All specifications and standards shown are updated and improved regularly and are subject to change without prior notice. Refer to updated datasheets.*





# MEDITEK® Membrane Tile OR Control Panel



**MEDITEK®** Membrane Tile Control Panel is a robust control panel for ORs Surgeon Control Panel has been designed to cope with technology and equipment in operating environment. It is designed to be user friendly and ease of operating & maintaining purpose. Control panel comprises of following display [optionally with controls]:

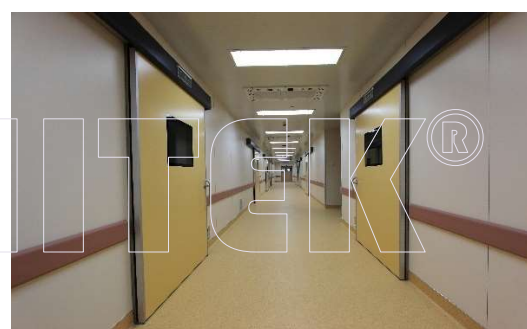
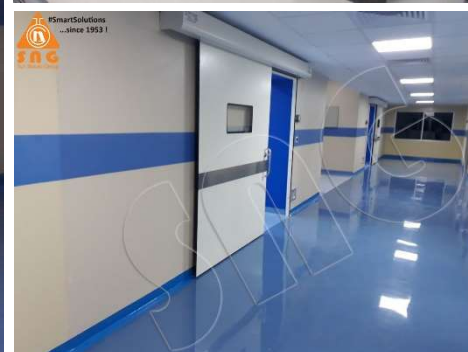
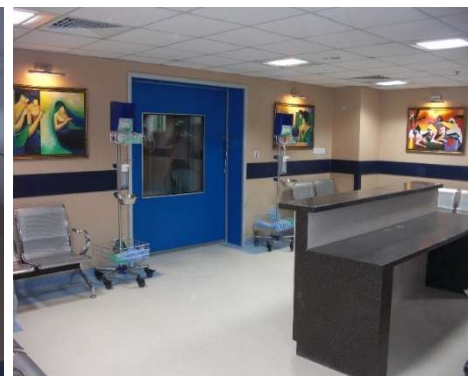
- Surgical Procedure Elapsed Time
- Real Time Clock & Date
- \*Temperature & Humidity Indicator
- Medical Gas Alarm
- Peripheral Control [optional brightness control]
- Hands Free Telephone

Surgeon Fascia Control panel meet the electrical safety codes for high and low voltage systems. The control panel is user friendly and ease of operating and maintenance purpose. The fascia is made with superior quality UV resistance membrane with sterilization feature.

*All specifications and standards shown are updated and improved regularly and are subject to change without prior notice. Refer to updated datasheets.*



# OR Hermetically Sealing Doors



To prevent cross air contamination and maintain positive pressure, Hermetically Sealing doors are installed in the Operating Theatres. These doors are made with HPL on both sides with a vision panel of 300x300mm. The Doors glide on high quality nylon wheels on a single piece aluminium extruded track guide-rail. The doors are available with Motorised controlled mechanism for opening and closing automatically. The opening is activated via foot plates or touch free hand sensors. The door is fitted with a strong door handle made of SS. The Door leaf is fitted with synthetic rubber gaskets to ensure hermetic sealing. The door is operable manually in an event of motor / power failure. Optionally door leaves are also available in SS as well.

*All specifications and standards shown are updated and improved regularly and are subject to change without prior notice. Refer to updated datasheets.*





# MEDITEK® Modular OR Components



- Return Air Duct Grills
- Integrated Storage Units
- Electric Points & Distribution
- Pass Through / Hatch Box
- X-Ray Viewer Panel
- Writing Surface
- Pressure Relief Damper
- View Windows [Motorized/Manual]

The above components are integrated with the **MEDITEK®** OR Systems to maintain best Class 100 cleanroom environment. Some components are customisable.

*All specifications and standards shown are updated and improved regularly and are subject to change without prior notice. Refer to updated datasheets.*



**#Smart Solutions**  
*...since 1953!*

A219 Road No 6  
Mahipalpur NH8  
New Delhi 110037  
India

**www.sngindia.org**  
**customercare@sngindia.org**  
**+91 98100 07700**



**Srishty Medical Private Limited**

# MEDITEK® OR Modular Technical / Storage Units



A range of **MEDITEK®** OR Modular Technical Units / Storage Units are available which are either stand alone or integrated flushed into the OT walls. Units can be with SS / GI Doors or Glass Panel Doors, with or without lock.

Shelving is provided as per needs of the OT and sizes are customisable as per OT requirements.

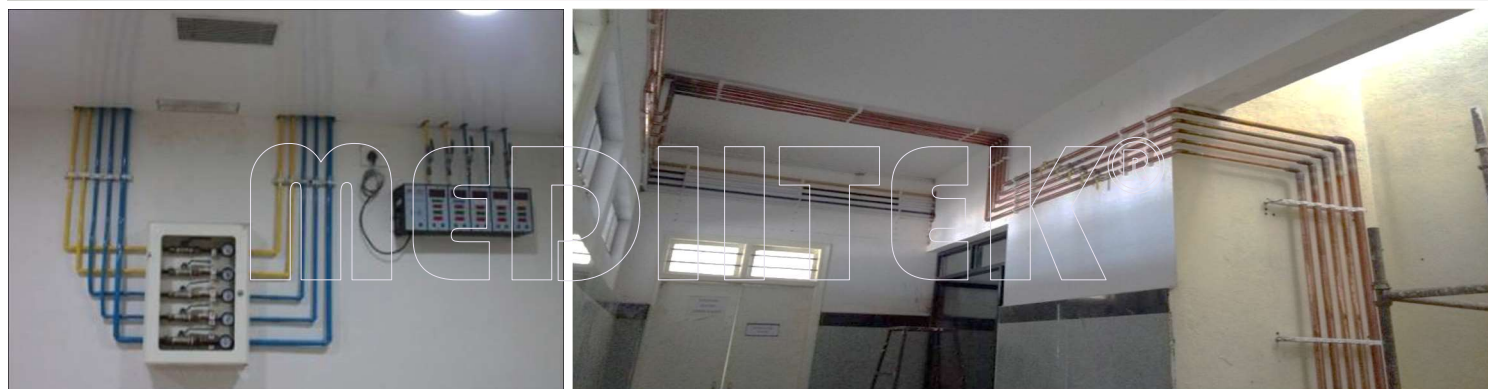
The units are constructed of either SS 304 or GI with anti-bacterial / anti-fungal coating.

*All specifications and standards shown are updated and improved regularly and are subject to change without prior notice. Refer to updated datasheets.*





# MEDITEK® OR Medical Gas Pipeline System



High quality **MEDITEK®** OR Medical Gas Pipeline System is installed inside the OR with Medical Grade Copper pipes and fittings are used, which are Phosphorous, deoxidizes, non-arsenical, degreased seamless round copper tube [Grade: CW024A/Cu-DHP] conforming to EN 13348 with incorporation of amendment A1:2005 or as per BS 2871, are used, seamless pipes with fluxless silver brazing. Connections to Terminal Units, Outlets and Ceiling Supply pendants are done with the medical gas copper pipeline system for Vacuum, Oxygen, Compressed Air, Carbon Dioxide & AGSS, as per each Operating Room's requirements with Medical Gas Alarm & Area Valve Service Units.

The **MEDITEK®** OR Medical Gas Pipeline System is integrated with the main **MEDITEK®** Central Medical Gas Pipeline System of the hospital.

*All specifications and standards shown are updated and improved regularly and are subject to change without prior notice. Refer to updated datasheets.*



# MEDITEK® OR Surgical Scrub Bay Stations



**MEDITEK® Series 1000SS** OR Surgical Scrub Bay Stations are with deep anti-splash trough for hands-free scrubbing and available with 1-Bay, 2-Bays, 3-Bays & 4-Bays.

Constructed out of 304 grade Stainless Steel, the Stations are also available with following operations:

Sensor	[Automated]
Elbow	[Manual]
Knee / Knee	[Manual]

The Scrub bays are floor / wall mounted.

Optional Hands-free soap dispenser delivers soap for scrubbing.



**MEDITEK® Series 1000NMA** OR Surgical Scrub Bay Stations are constructed with anti-bacterial, anti-fungal & anti-microbial thermoformed NMA [Natural Mineral Acrylic]. The stations are with deep anti-splash trough for hands-free scrubbing and available with 1-Bay, 2-Bays, 3-Bays & 4-Bays.

The **MEDITEK® Series 1000NMA** Stations are also available with following operations:

Sensor	[Automated]
Elbow	[Manual]

The Scrub bays are floor / wall mounted.

Optional Hands-free soap dispenser delivers soap for scrubbing.



*All specifications and standards shown are updated and improved regularly and are subject to change without prior notice. Refer to updated datasheets.*





# MEDITEK® Ceiling Supply Pendants & Bridges



A wide range of **MEDITEK®** Surgeon's & Anaesthesia Ceiling Supply pendants are designed to provide an easy access to medical gas outlets, electrical outlets, data and other connections as required in operating rooms. Various configurations and architectural solutions are available. The pendants are offered in Drop Down, Single Arm & Double Arm formats for Operating Rooms with complete range of accessories. The pendants are construction with extruded aluminium and steel with a robust, sturdy and strong providing adequate pay load capacities for various OR equipment to be mounted on to the pendants. There are separate channels for power and gases.

**MEDITEK®** Ceiling Supply pendants are assembled in India in technical collaboration with **SonneMed** [Germany].

*All specifications and standards shown are updated and improved regularly and are subject to change without prior notice. Refer to updated datasheets.*



A219 Road No 6  
Mahipalpur NH8  
New Delhi 110037  
India

[www.sngindia.org](http://www.sngindia.org)  
[customercare@sngindia.org](mailto:customercare@sngindia.org)  
+91 98100 07700



## MEDITEK® Surgical/OT Lights

LED 600/450  
SURGICAL LIGHT



**MEDITEK®** Surgical / OT Lights are available in 160Klux & 140Klux and combinations thereof. With high-quality & high-resolution LED lamps [OSRAM] offer service life of around 50,000 hours. Extremely low power consumption of 60/45 Watts, the **MEDITEK®** Surgical / OT Lights are assembled in India with technical collaboration from **SonneMed** [Germany].

The **MEDITEK®** Surgical / OT Lights are offered in Single and Double dome combinations with possibility of third-arm monitor and optional integrated camera. The lights can also be offered Camera prepared – where once camera can be removed and taken to other Camera prepared **MEDITEK®** Surgical / OT Lights in other theatres.

*All specifications and standards shown are updated and improved regularly and are subject to change without prior notice. Refer to updated datasheets.*



A219 Road No 6  
Mahipalpur NH8  
New Delhi 110037  
India

[www.sngindia.org](http://www.sngindia.org)  
[customercare@sngindia.org](mailto:customercare@sngindia.org)  
+91 98100 07700

**Srishty Medical Private Limited**





# OR Hybrid & Transplant Solutions



Hybrid ORs help improve patient outcomes, speed patient recovery time and reduce length of patient stays, decreasing cost for the healthcare organizations. The Hybrid ORs also give surgeons and medical staff the flexibility to juggle between different procedures ex. From open heart surgeries to catheterization / stenting etc., without having to move between floors. Since everything occurs in one room, emergencies or complications can be handled in one spot without putting the patient at risk. Such Hybrid OR designs are also an excellent solution for organ transplant ORs. **MEDITEK®** offers a variety of Hybrid OR Solutions.

*All specifications and standards shown are updated and improved regularly and are subject to change without prior notice. Refer to updated datasheets.*

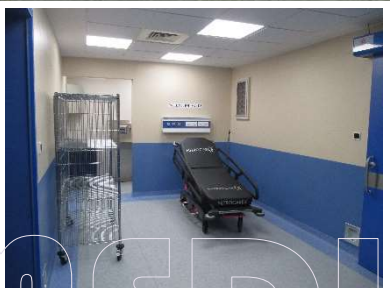


A219 Road No 6  
Mahipalpur NH8  
New Delhi 110037  
India

**www.sngindia.org**  
**customercare@sngindia.org**  
**+91 98100 07700**



# OR Corridors & Support Areas



An OT Complex's another important and critical area is the OR Support areas, the corridors, control rooms, pre & post-ops, pre-anesthesia, sluicing rooms, DUs & CUs. We provide complete design, supply and commissioning of these spaces as well as a part of the **MEDITEK® OR Solutions**.

*All specifications and standards shown are updated and improved regularly and are subject to change without prior notice. Refer to updated datasheets.*



**#Smart Solutions**  
...since 1953!

A219 Road No 6  
Mahipalpur NH8  
New Delhi 110037  
India

**www.sngindia.org**  
**customercare@sngindia.org**  
**+91 98100 07700**



**Srishty Medical Private Limited**



# MEDITEK® OR Integration



Integration in an Operation Theater usually refers to systems integration i.e., functionally connecting the OT environment. It includes integration of patient information system, image, audio, video, medical equipment, video conferencing, etc.

**MEDITEK®** OR Integration is a bespoke solution offering a range of options for

- Video Recording [DVR/NVR]
- Video Archiving
- Video Conferencing
- Patient Information etc.

*All specifications and standards shown are updated and improved regularly and are subject to change without prior notice. Refer to updated datasheets.*



A219 Road No 6  
Mahipalpur NH8  
New Delhi 110037  
India

[www.sngindia.org](http://www.sngindia.org)  
[customercare@sngindia.org](mailto:customercare@sngindia.org)  
+91 98100 07700

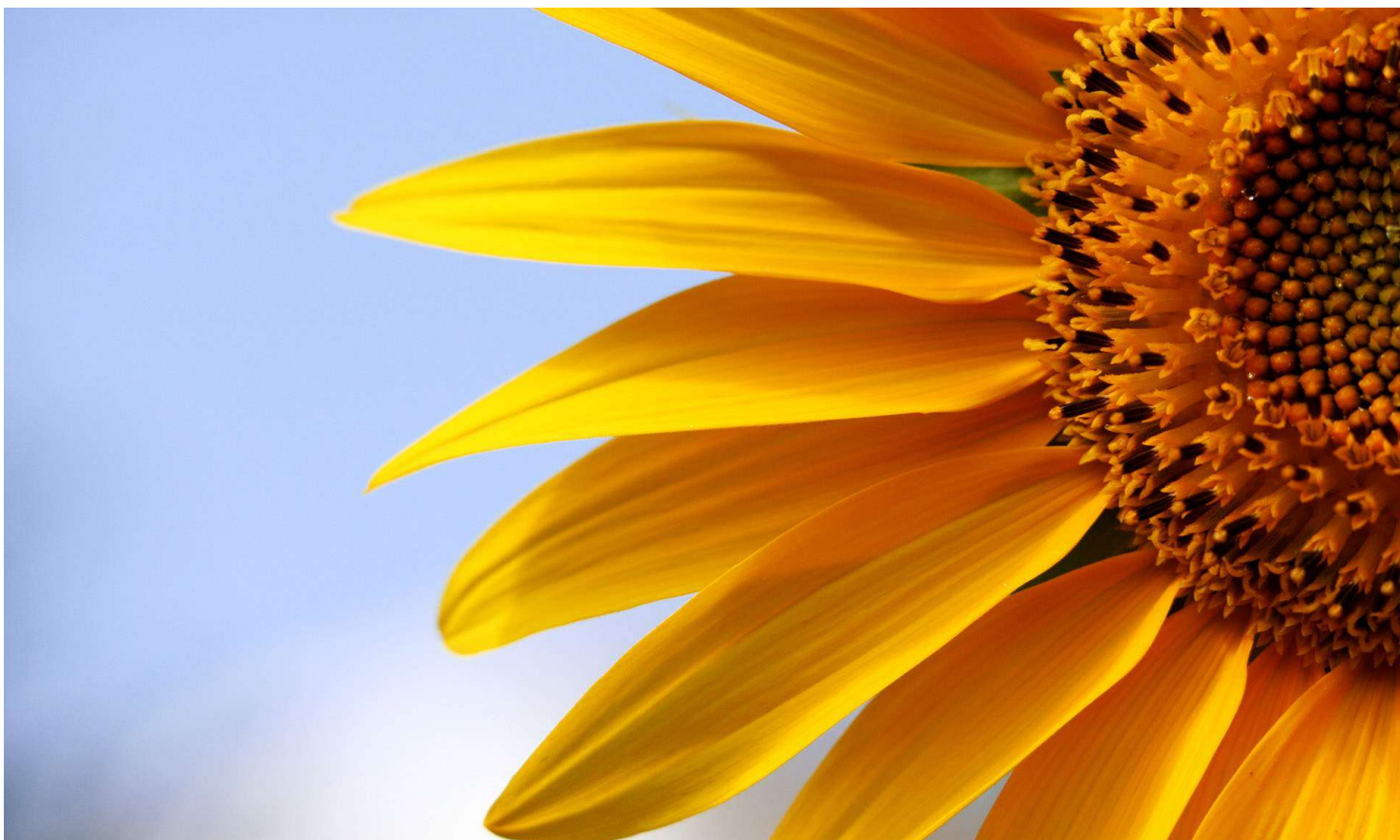




# www.sngindia.org



- Delhi
- Mumbai
- Chennai
- Kolkata
- Bengaluru
- Hyderabad
- Pune
- Amdavad
- Coimbatore
- Vishakhapatnam
- Maniplal
- Kochi
- Kathmandu
- Colombo



follow us @



ISO 9001  
CERTIFIED



**Srishty Medical Private Limited**

SNG Tower A219 Road No.6  
Mahipalpur NH-8 New Delhi-110037  
Tel: +91 11 2678 7685-86  
Mob. : +91 98100 07700  
customercare@sngindia.org  
www.sngindia.org