

Please see the attached quotation from Just Right. Please note we had the contractor meet at our unit with Alan Johnson from Ptarmigan for consultation on what may or may not be allowed by the HOA. Based on those discussions, we are proposing we locate the outdoor heat pump in the secluded area at ground level next to our unit on the east side. Since this is the end unit, the heat pump will be completely out of sight and sound range for any other unit in the complex, or any person that would walk by our unit. See pictures below.



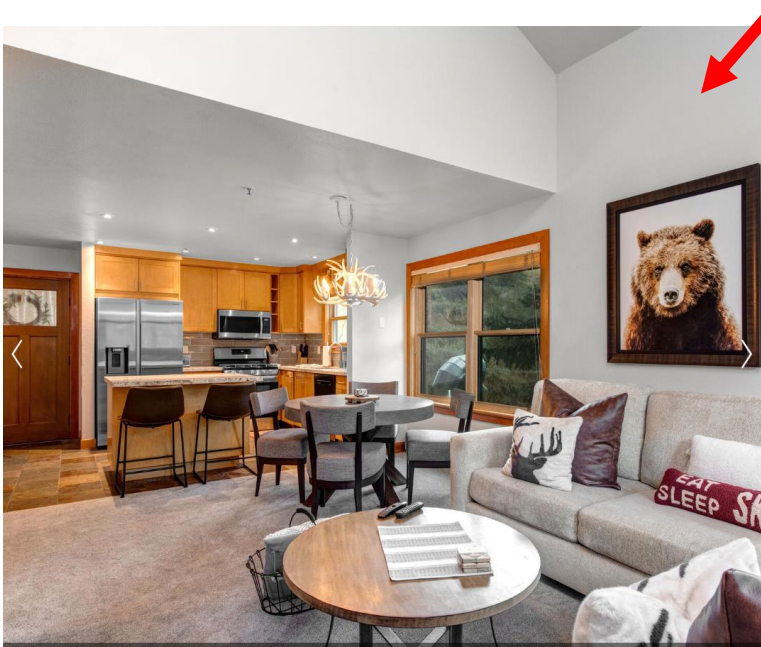
Per the HOA requirements, there will be no power or conduit run up the exterior walls of the building. Power to the unit will be routed from the electrical panel in the unit, through the kitchen ceiling, down the inside walls, and out through the lower bedroom wall to the heat pumps. Refrigerant, drain tubes and power will be run from the heat pump directly into the building by the lower bedroom, then up through the inside walls to each of the bedrooms and the living room.

Please see the attached quote for a description of the outdoor heat pump and the three wall mount systems that will be installed in the unit. The heat pump will be the 2-Ton Daikin MXS Series. The unit has a very small footprint and is very quiet at 52dBA. The indoor fan units will be placed as follows:

- Downstairs Bedroom – above bed just on other side of exterior wall with heat pump



- Living Room – on east side wall above where the bear picture is



- Upstairs Bedroom – on south side wall that faces Deer Valley Drive

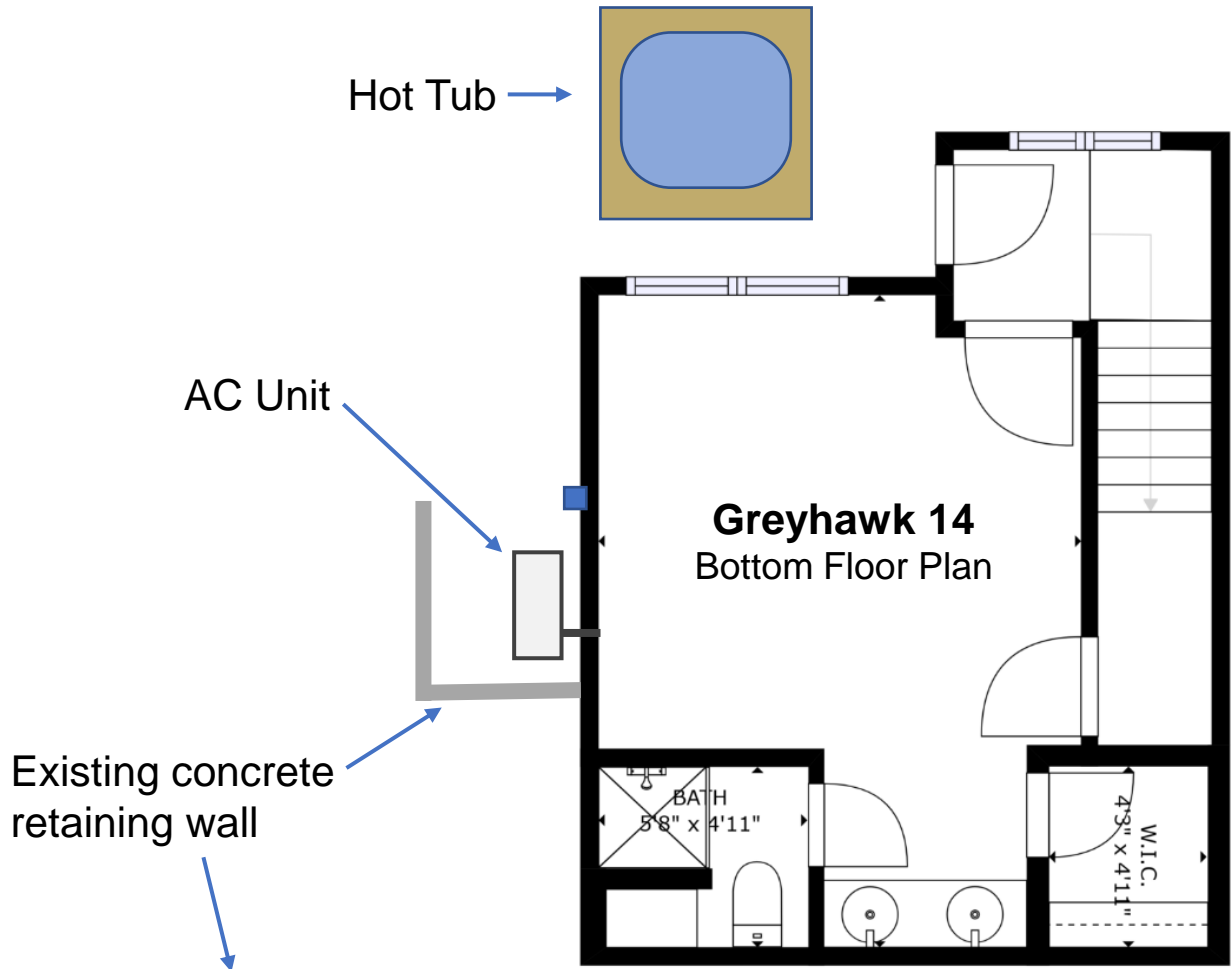


All internal wall sheetrock that needs to be removed to run refrigerant, drainage and power will be repaired to match the existing texture and paint.

See the attached spec sheets, quotation, and remodel application for reference. We will send these materials through the mail with a check for \$150 to cover the applicable fees.

We are happy to discuss this in more detail should you have additional questions. We are looking forward to being one of the first units to add air conditioning under the new guidelines.

↑ Deer Valley Drive ↑



Greyhawk 14
Outside Picture of Heat Pump Location