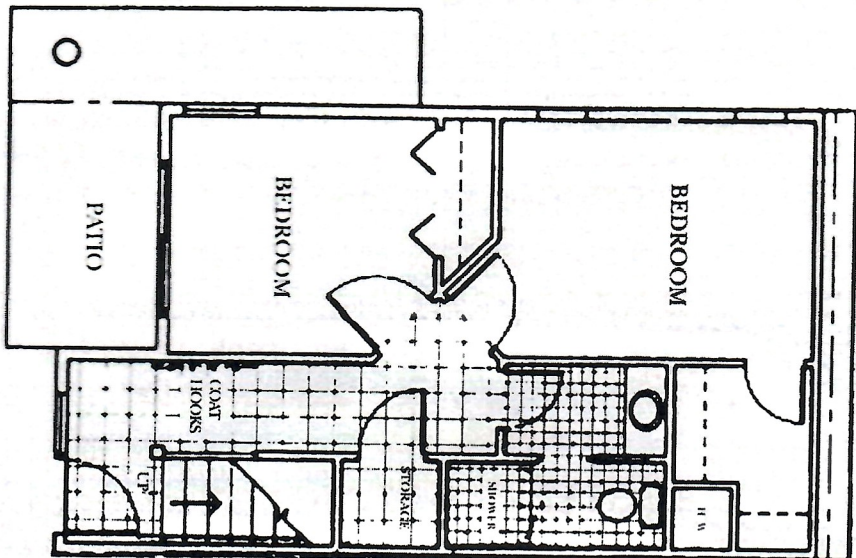


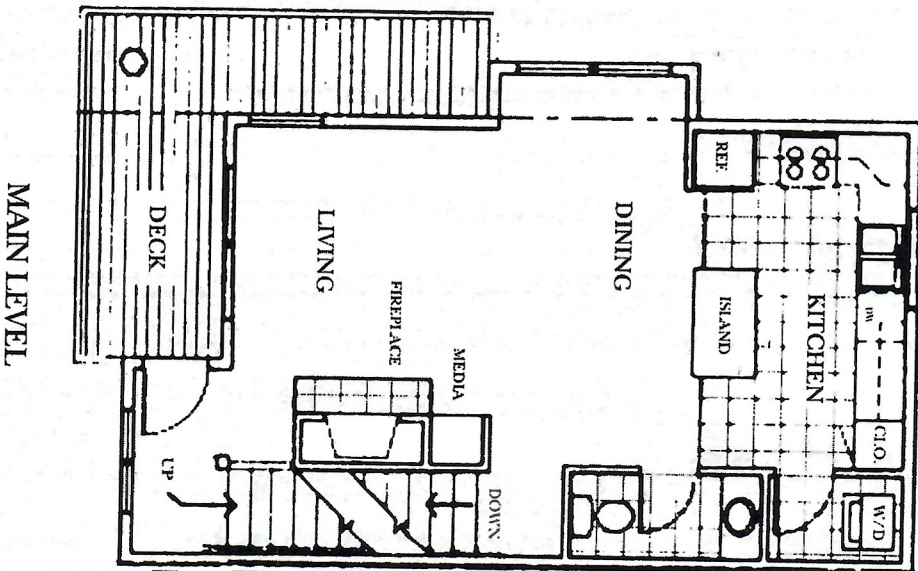
TOWNHOMES

16, 19, 20, 22, 23, 26

LOWER LEVEL



Approximately 1,425 square feet



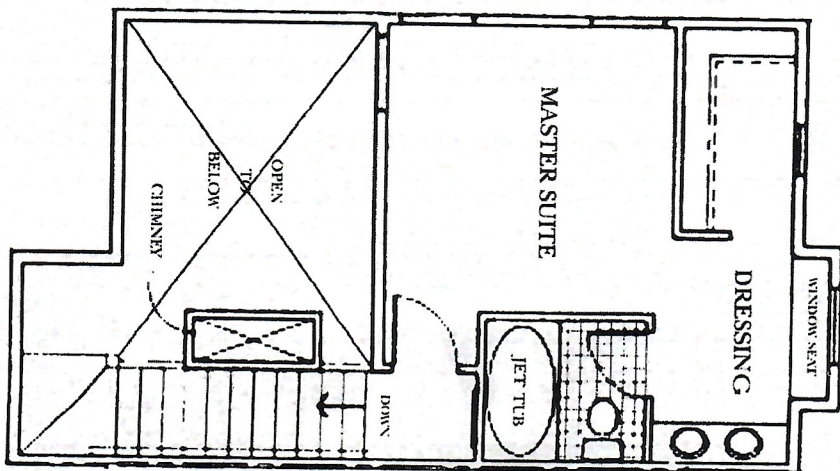
MAIN LEVEL

N O R T H

EXTERIOR UP HILL UNIT

3 bedroom • 2 1/2 bath

UPPER LEVEL



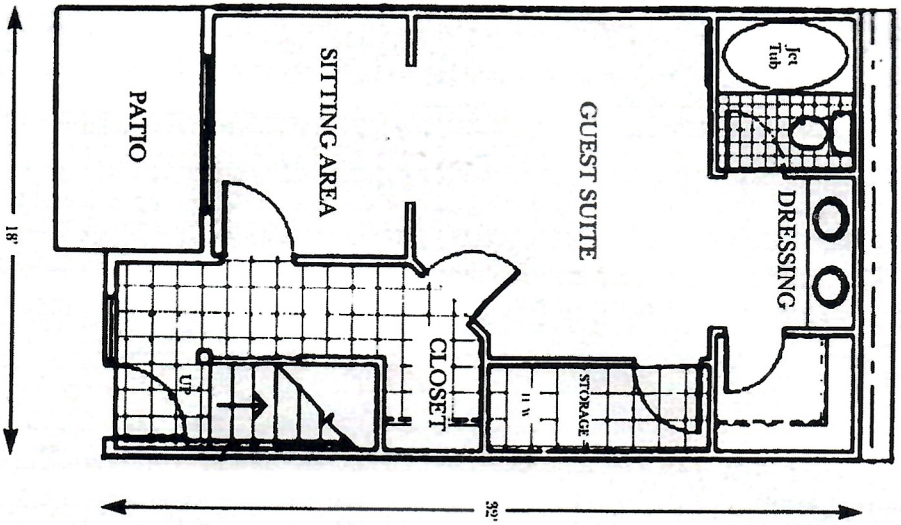
All floor plans are subject to change. No bids exist until final plan recordation. This summary and all information contained herein was obtained from reliable sources and is deemed accurate. However, we do not guarantee its accuracy, and all information is subject to change without notice.



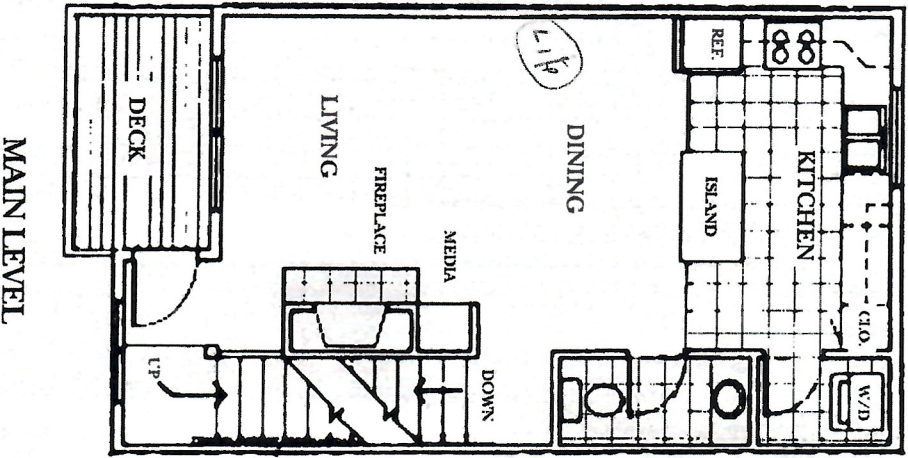
TOWNHOMES

17, 18, 21, 24, 25

LOWER LEVEL

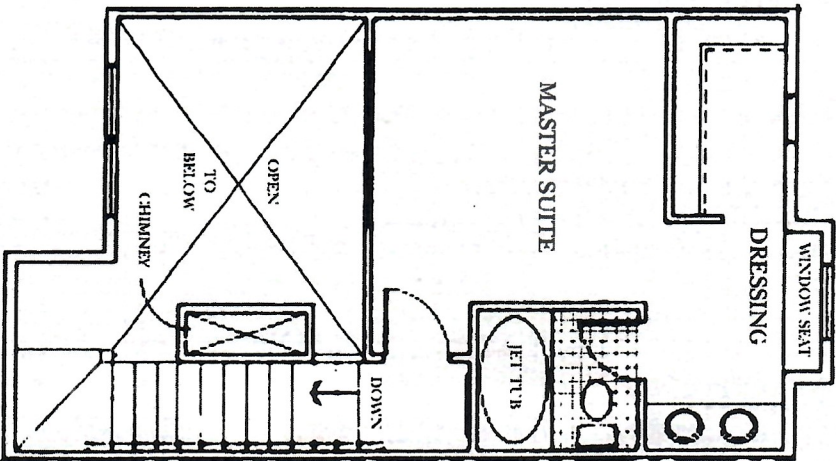


Approximately 1,415 square feet



MAIN LEVEL

UPPER LEVEL



NORTH INTERIOR UP HILL UNIT

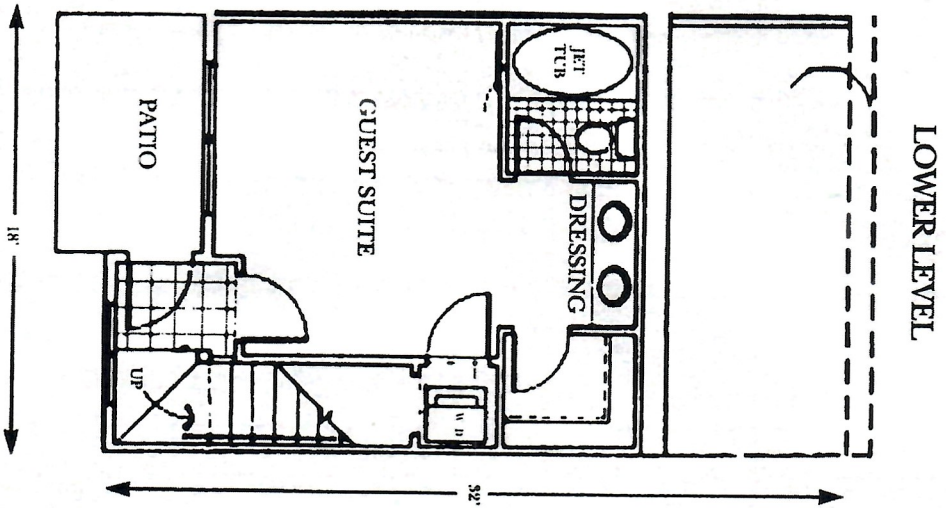
2 bedroom • 2 1/2 bath



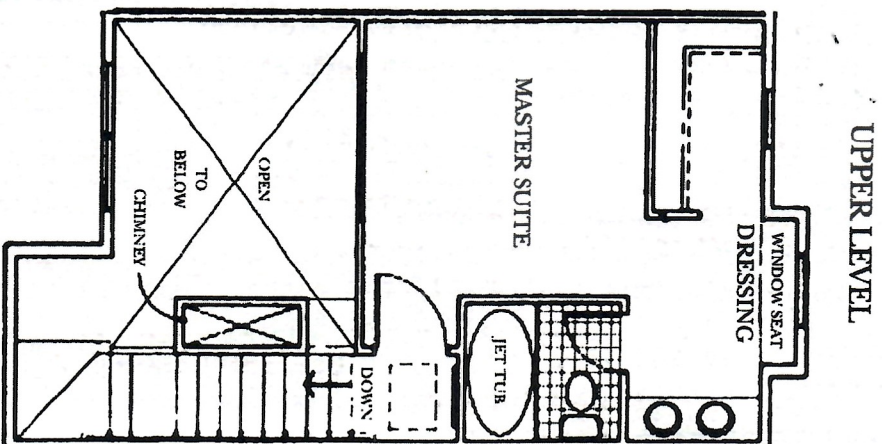
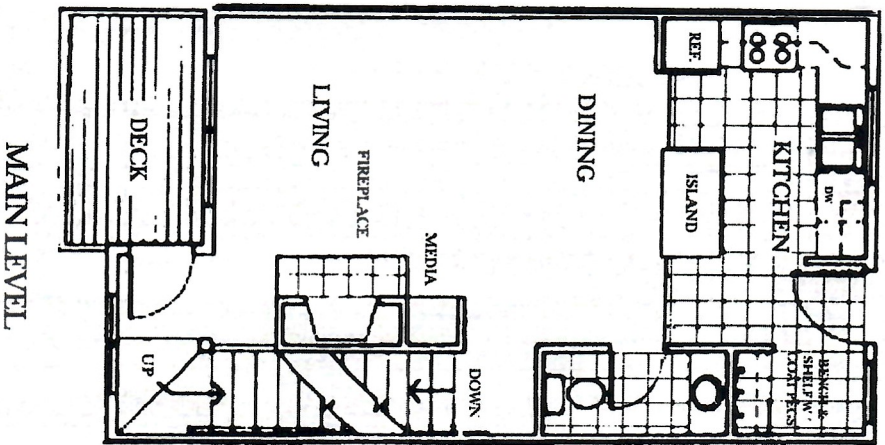
All floor plans are subject to change. No lots exist until final plat recordation. This summary and all information contained herein was obtained from reliable sources and is deemed accurate. However, we do not guarantee its accuracy, and all information is subject to change without notice.

TOWNHOMES

3, 6, 7, 10, 13



Approximately 1,280 to 1305 square feet



SOUIH

INTERIOR DOWN HILL UNIT

2 bedroom • 2 1/2 bath

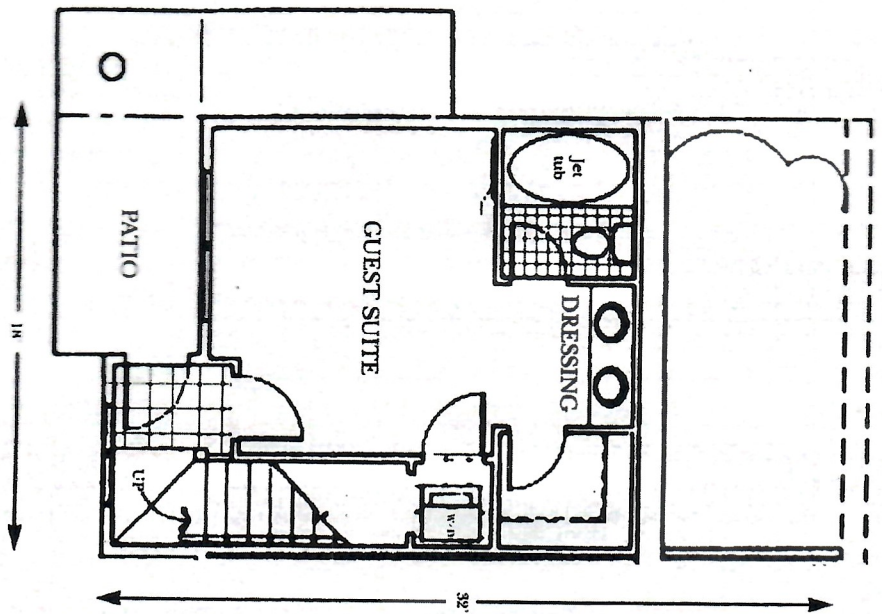


All floor plans are subject to change. No lots exist until final plat recordation. This summary and all information contained herein was obtained from reliable sources and is deemed accurate. However, we do not guarantee its accuracy, and all information is subject to change without notice.

TOWNHOMES

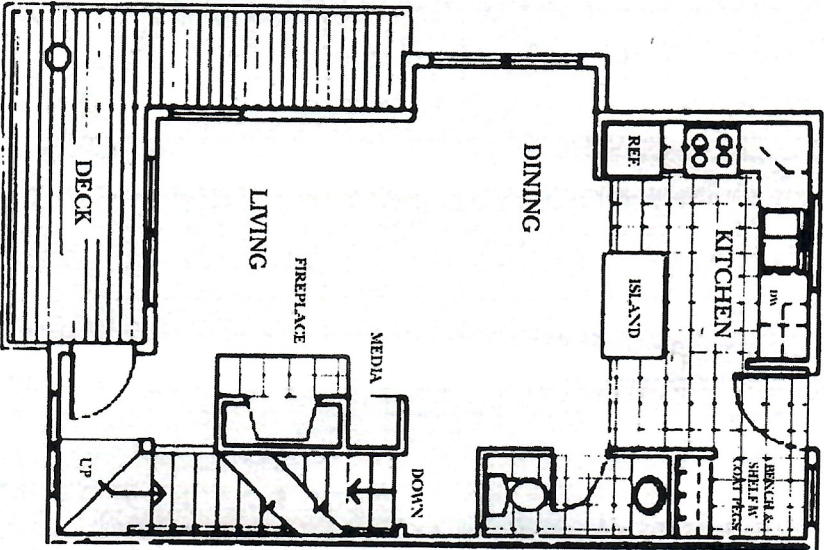
2, 4, 5, 8, 9, 11, 12, 14

LOWER LEVEL



Approximately 1,280 to 1305 square feet

MAIN LEVEL

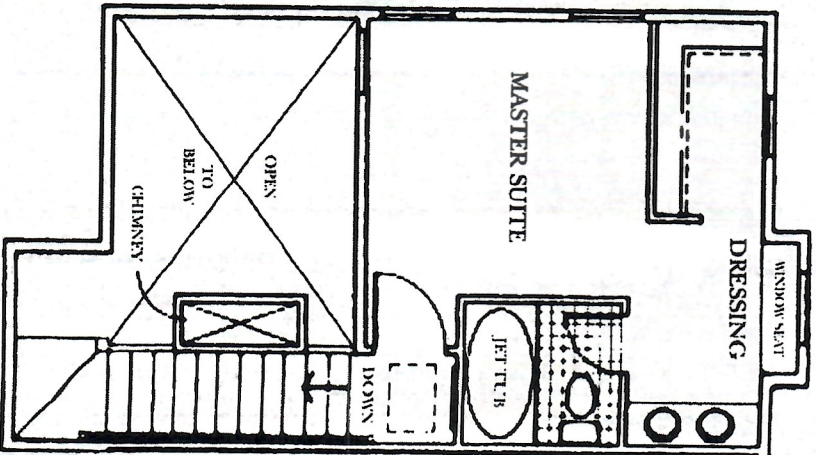


S O U T H

EXTERIOR DOWN HILL UNIT

2 bedroom • 2 1/2 bath

UPPER LEVEL



All floor plans are subject to change. No lots exist until final plat recordation. This summary and all information contained herein was obtained from reliable sources and is deemed accurate. However, we do not guarantee its accuracy, and all information is subject to change without notice.

