

WorkTuff™

WORKTUFF™ IS DURABLE PROTECTION
FROM FOUL WEATHER.

NASCO

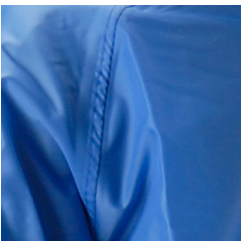


NASCO WorkTuff™

WorkTuff™ is lightweight yet very rugged and durable. Designed for rough work environments, it will protect the worker from the abrasive nature of the job as well as extreme foul weather.

Features & Benefits

- Waterproof - Provides resistance to water penetration
- Lightweight - Increases worker comfort
- Durable - Extends product life cycle
- Abrasion Resistant - Increases durability and reduces number of replacements
- Soft - Increases worker comfort
- Flexible - Maximizes worker range of motion
- Non-Conductive - Uses all non-metallic hardware



QUALITY
Stitched and taped seams.



PROTECTION
Storm Fly Front



MATERIAL SPECIFICATIONS

Fabric	Type 66 Nylon
Moisture Barrier	Polyurethane
Finished Weight	4.5 oz/yd ²
Seam Construction	2 needle stitched and taped
Color(s)	Yellow (Y), Forest Green (G), Electric Blue (EB)
Hydro Resistance ASTM D751	> 150 psi

AVAILABLE ITEMS

601JG124

Green waist-length jacket, attached hood, hanger loop, snap front with storm fly, take up snaps at sleeve cuffs.

601TG126

Green bib style trouser, plain front, hanger loop, elastic suspenders with quick-release buckles, take up snaps at leg cuffs.

RECOMMENDED APPLICATIONS

- Forestry
- Food Processing
- Fishing
- Park Services



SPANISH YELLOW



GREEN



ELECTRIC BLUE

Size chart available online at www.nascoinc.com

All NASCO raingear patterns are digitally mastered and cut ensuring you get the right size garment every time.