

Lifeguards

Lifeguards are on duty during peak days and hours of the summer season. Do not swim when lifeguards are not present; you do so *at your own risk*.

Lifeguards are present to ensure *swimmer safety*. Lifeguards are not beach monitors. They do not provide childcare. They are not beach toy managers.

Lifeguards are empowered to suspend swimming privileges of a guest who consistently breaks the rules or does not abide by the lifeguard's instruction. Repeat violators will be brought to the Board's attention for review.

Lifeguards are permitted to have disruptive guests or unaccompanied non-members removed from the property.

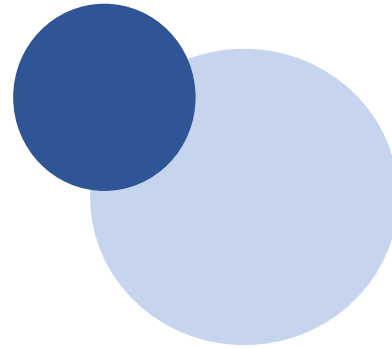
Safety First!

Note: This is not an all-inclusive safety document.

Rather, it is a reminder to our social members and cottage owners about the importance of safety-related rules and guidelines.

It is everyone's responsibility to put safety first.

Walton Lake is a
members only
recreation venue for
swimming, fishing,
family and fun!



For a membership application or pavilion rental information, visit www.waltonlakecrestline.com

For other information email info@waltonlakecrestline.com

Updated Jan 1, 2022



Safety First!

Crestline Walton Lake Company
Crestline, Ohio



Beach and Picnic Area Safety

- Parents or other adult caregiver must be present and are responsible for their minor child's safety and behavior
- No running, pushing, frisbee, sport ball-playing or general "horseplay" is allowed
- Animals are not allowed on the beach or the immediate surrounding area
- No smoking, alcohol or glass
- All trash should be placed in the trash containers
- Stow all toys before leaving

Social Members must bring their membership cards when visiting the lake.

Membership may be occasionally checked and verified.

Water, Swim and Platform Safety



- Lifeguards must be obeyed at all times by swimmers, guests, children, parents and other adult caregivers
- Parents or other adult caregivers must be present and are responsible for their minor child's safety and behavior
- No dunking or other roughhousing
- No hiding or playing underneath the floating pads/rafts
- One at a time on the slide ladder
- Head first is not permitted on the slide
- No diving off the platform walkway, only from the platform and dive board
- No running on the platform
- Animals are not allowed in the lake
- Stow all toys or floats in the shed storage areas before leaving

There is no boating at Walton Lake.

This includes but is not limited to any flotation device with an oar or a paddle, multi-passenger closed-bottom tubes, paddleboats or other similar item.

The speed limit throughout the Walton Lake community is

13 mph

Be extra careful of children along the roads. Drivers are expected to obey stop signs and no parking signs.



It is everyone's responsibility to put safety first.

Please do your part.

