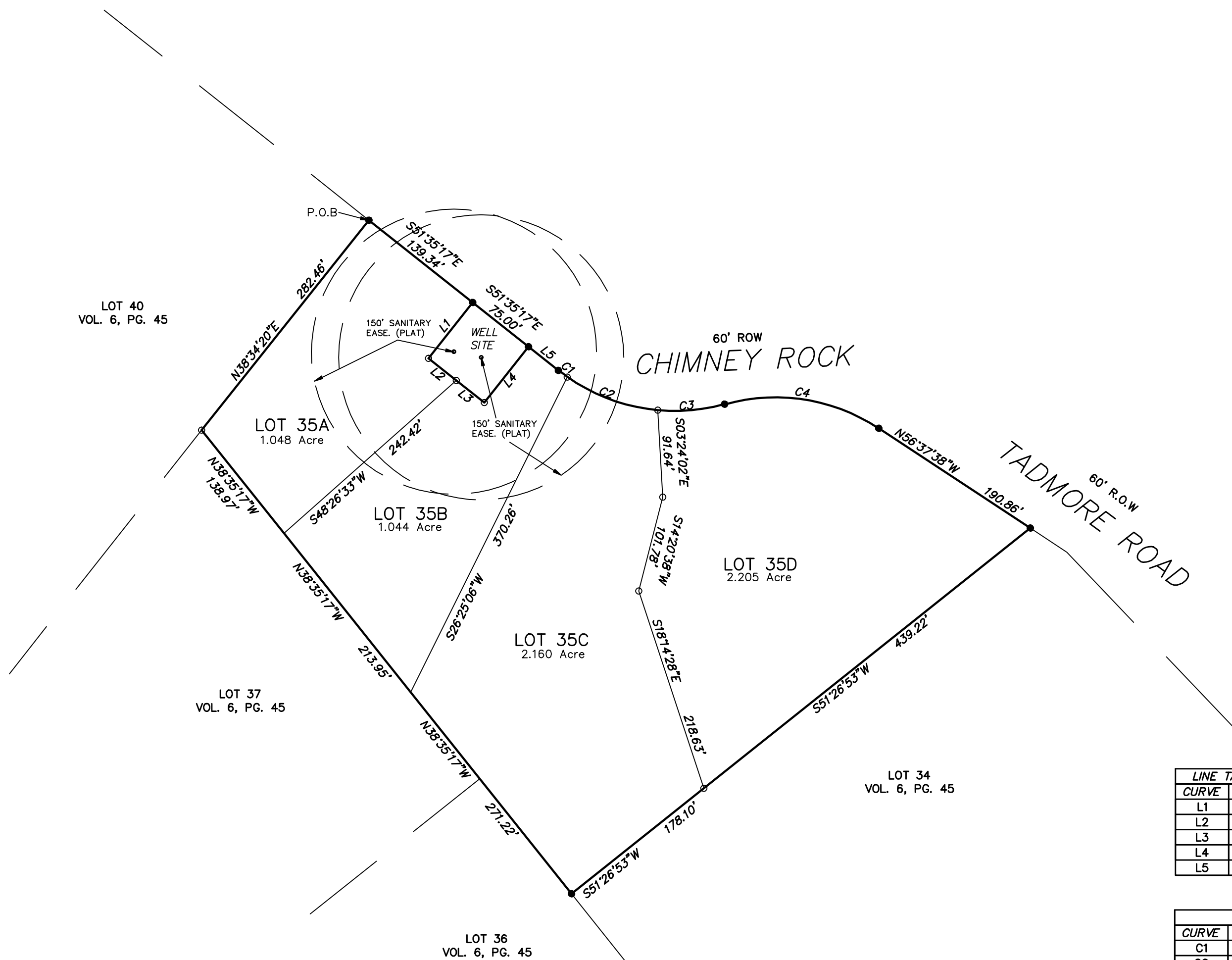


LEGEND

- = IRON ROD FOUND
- = CALC. PROP. COR.
- △ = CALC. PROP. COR.
- () = RECORD PER PLAT
- PUE = PUBLIC UTILITY EASEMENT
- DE = DRAINAGE EASEMENT
- BL = BUILDING SETBACK LINE

REPLAT OF LOT 35, EMERALD VALLEY SUBDIVISION

The purpose of this plat is to subdivide lot 35 as shown on the current plat of Emerald Valley Subdivision as recorded in Volume 6, Page 45, into 4 lots and to be known as Lots 35A, 35B, 35C, AND 35D, by this replat.

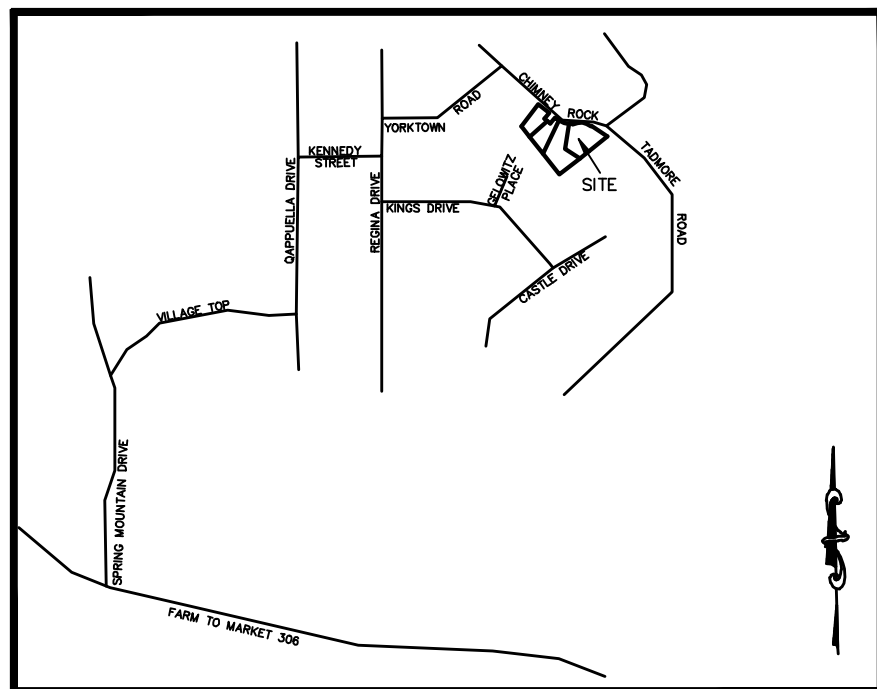


LINE TABLE		
CURVE	LENGTH	BEARING
L1	75.00'	S38°24'43"W
L2	37.50'	S51°35'17"E
L3	37.50'	S51°35'17"E
L4	75.00'	N38°24'43"E
L5	40.00'	S51°35'17"E

CURVE TABLE				
CURVE	LENGTH	RADIUS	CHORD	BEARING
C1	11.81	196.26'	11.81	S53°11'03"E
C2	102.41	196.26'	101.25	S69°51'22"E
C3	71.17	196.26'	70.78	N84°48'25"E
C4	169.45	196.26'	164.24	S81°05'55"E

LOCATION MAP

NOT TO SCALE

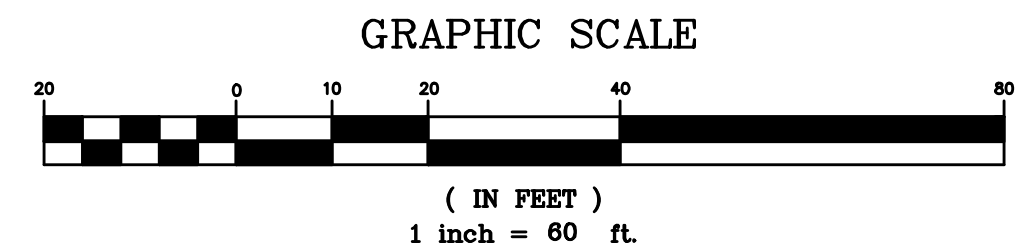


UTILITIES:

ELECTRIC—PEDERNALES ELECTRIC COOPERATIVE
 WATER—COMMUNITY WELL
 SEWER— ALL LOTS REQUIRE A ADVANCED INDIVIDUAL ON-SITE SEWAGE FACILITY.

EASEMENT STATEMENT:

Property owners are advised that they are responsible for maintenance of dedicated easements on their property and may not utilize these easements for any purpose detrimental to their intended use (i.e., no structures, septic tank fields, etc.). Grantees of said dedicated easements reserve the right of access to such easements.



CELCO SURVEYING
 REG. #: 10193975
 GEORGE E. LUCAS, R.P.L.S. 4160
 301 MAIN PLAZA, SUITE 387
 NEW BRAUNFELS, TEXAS 78130
 TEL: 830-214-5109
 eddie@celcosurveying.com
 www.celcosurveying.com