

**GOLDMAX**<sup>TM</sup>  
**GYP SUM**



**GYP SUM  
THAT  
WILL  
BE  
CHANGE  
THE  
FACE  
OF  
DESIGN  
IN  
YOUR  
HOME**



**GOLDMAX PLASTERS PRIVATE LIMITED.**

Ro : No 402 Gf, Dwarikamayi Building, 8th B Main, 4th Cross, Hrbr Layout, Bangalore  
Bangalore Karnataka-560043

Mr. Shatrudhan Jaiswal  
MD

Mob +91 95385 96468/+91 95380 96468

Tel- 080 8079 601014

Email- admin@goldmaxgypsum.com

Enquiry - info@goldmaxgypsum.com

**WWW.GOLDMAXGYP SUM.COM**



**Indian Green Building Council**

## WE DEFINED

GOLDMAX is one of the leading Manufacturer and marketed of GYPSUM Plaster and BOND-IT First of it's Kind embarking in india, at Plant We are producing the Finest Quality of GYPSUM Plaster in The Market, Being white in colour and hardness over 38% more than any other GYPSUM in Indian markets makes it as Very Good Class Product and the highest grade of GYPSUM in the CONSTRUCTIONS ARENA.



## HOW ARE WE GYPSUMIZING ..... A BIRD'S EYE VEIW

GOLDMAX is a Bangalore Based Company providing Very Good Class GYPSUM across Major citis in india, Seeing the huge gap between demand and supply of quality of GYPSUM PLASTER we introduced the same in indian Market and now providing the quality of GYPSUM PLASTER to our Valued costumers. our product are manufactured with an advance technology which has attained the much-desired excellance under strict quality control systems, we follow and maintain extremely high quality managements systems to manage our PRODUCTIONS,

## WHY & HOW ARE WE THE MOST PREFERRED .....

The manufacturing facility is well equipped with state of art fully automated GYPSUM processing Manulay. RCC & BLOCK BOTH Surfaces, support and supervision by highly qualified and experienced INDIAN Engineers, and well-trained WORK FORCE.

GOLDMAX has created a huge network of the marketing offices throughout the country to ensure uninterrupted and timely supply to their customers, We have our won Marketing offices, faster delivery of GYPSUM Plaster at your Doorsteps.

We have a highly qualified and experienced team of young and enthusiastic employees for all technical support who are determined to cater all is customers needs to their utmost satisfactions.

## GOLDMAX ONE COAT GYPSUM PLASTER



## QUALITY PRODUCT

GOLDMAX Gypsum Plaster 1 Coat is Produced From The Light weight Powder - density rock sourced from the purest mines, The Advantage of our GOLDMAX GYPSUM is that it is highest grade of GYPSUM being wight in Colour and having a Very Good hardness, More than other GYPSUM PLASTER PRODUCT available in the Indian market, This GYPSUM Plaster can be Directly Applied an All Surfaces, we do Not need sand Cement Plaster the walls the coverage in 25/-KG Bag is Arround 24-26 SFT With a thicknees of 10-12mm . The fineness of 250 Mesh, and purity over 75% gives the best atomic bond and an absolute mirror Finishing,

**GOLDMAX ONE COAT GYPSUM PLASTER**

# APPLICATION METHOD & ACROSS INDUSTRIES



## GOLDMAX GYPSUM PLASTER IN BUILDING & CONSTRUCTIONS.

GOLDMAX GYPSUM PLASTER is Used all type of Construction, From Residential and Commercial Projects Inetrnal Areas, GYPSUM PLASTER is also used for making of plasterboard, decorative cornices, Plaster blocks, and GYPSUM based self levelling Screeds.

## OTHER INDUSTRIES EXPLORING & USING GOLDMAX GYPSUM PLASTER.

- \* Agriculture
- \* Sanitaryware
- \* Cement Industry
- \* Bandages & Dentistry
- \* Others

*RANGE OF GOLDMAX PRODUCTS*

***RANGE OF PRODUCTS***

- \* GOLDMAX 1 COAT GYPSUM PLASTER
- \* GOLDMAX SUPER GYPSUM PLASTER
- \* GOLDMAX XPERT PLASTER
- \* GOLDMAX BOND-IT
- \* GOLDMAX FIBERGLASS MESH ROLL

**THINK GYPSUM THINK GOLDMAX**

[WWW.GOLDMAXGYPSUM.COM](http://WWW.GOLDMAXGYPSUM.COM)

# GOLDMAX

**WELCOME  
TO  
GOLDMAX  
GYPSUM**

**MKTD BY- GOLDMAX PLASTERS PRIVATE  
LIMITED.**

Office - 402, GF Dwarikamayi Building, 8th B Main, 4th Cross,  
Hrbr Layout Bangalore 560043

Mob +91 9538 596468 / +91 95380 96468

Email - [admin@goldmaxgypsum.com](mailto:admin@goldmaxgypsum.com)

Enquiry - [info@goldmaxgypsum.com](mailto:info@goldmaxgypsum.com)

**MADE IN INDIA**

**[WWW.GOLDMAXGYPSUM.COM](http://WWW.GOLDMAXGYPSUM.COM)**

## GOLDMAX ONE COAT GYPSUM PLASTER

**GOLDMAX GYPSUM** Products in The constructons space are the material of choice because of their unique properties, it has exellent issulation properties both thermal and acoustic and can offer very GOOD Passive Fire protection, Moisture resistance, impect resistance and vapour control when used in combination with the right systems.

## GOLDMAX GYPSUM PLASTER RANGE OF PRODUCTS

### GOLDMAX 1 COAT GYPSUM PLASTER

The distinguished advantage of the **GOLDMAX GYPSUM PLASTER 1 COAT**, is that it made out of the highest grade of **GYPSUM being white in colour and having a Very Good hardness**, which is more than any other GYPSUM Plaster available in the Market. This GYPSUM PLASTER Can be easily applied directly an all SURFACES, we do not need to sand/Cement Plaster/ for the walls. **The coverage in a 25KG. Bag 24-26 SFT With a thickness of the 12mm. The fineness and purity of over 75% gives the best bond an absolute mirror finishing.**

### TECHNICAL SPECIFICATIONS OF GOLDMAX GYPSUM PLASTER



WHITENESS - PURITY	75%
FINENESS	MESH 200, RESIDUE 3%
SETTING TIME INITIAL	10-13 MIN
SETTING TIME FINAL	18-23 MIN
BENDING STRENGTH	45 KG. / Cm2
COMPRESSIVE STRENGHT	130 KG. / Cm2
DRY BULK DENSITY	700 KG. / M3
COVERAGE 12MM THICKNESS	24/- SFT
BAG QTY	25/- KG NET.



*AN ISO 9001:2015  
Certified Company*

## APPLICATION METHOD OF GYPSUM PLASTER

**GOLDMAX GYPSUM CAN BE USE ALL SURFACES IN EASILY,**

- 1- Surface Must to be Clean, Dry, Firm & Free of Dust.
- 2- Important Properties Like soluble salt content, Thermal characteristics, Shrinkage, Suction, bonding properties etc. of the background which is to be plasterd, should be evaluated before APPLICATION.
- 3- GOLDMAX GYPSUM 1 COAT PLASTER Can be applied directly of all surfaces, like RCC/RED BRICKS/SIPOREX BLOCKS/SAND PLASTER WALLS.

## DIRECTION OF USE GOLDMAX GYPSUM

- \* VERY SMOOTH FINISHING
- \* SINGLE COAT APPLICATION
- \* CAN BE APPLIED DIRECTLY AN ALL WALLS SURFACES
- \* FREE OF SHRINKAGE CRACKES
- \* ZERO MAINTENANCE
- \* COMPATIBLE WITH ALL TYPES OF PAINT
- \* WHITE IN COLOUR PRODUCT

- \* The Right Way To Mix is To Add The GYPSUM Powder to Water , Not Water to Powder
- \* Avoid Mixing More Powder That can be used Within 12 Minutes.
- \* Do Not Temper or Mix fresh Material once a Mix has Started To Set
- \* After Taking the Required amount of Plaster, always fold the open end, to Protect the plaster From Moisture.
- \* Setting Time cannot be altered by Bdiluting the Mixture with water.



## GOLDMAX BOND-IT

GOLDMAX BOND-IT is The High Strength and Performance Bonding Agent For GYPSUM PLASTER APPLICATION ON RCC Surfaces. Further it has waterproofing properties and hence it prevents leakages from the crakes in the GYPSUM PLASTER.

### GOLDMAX BOND-IT ADVANTAGES

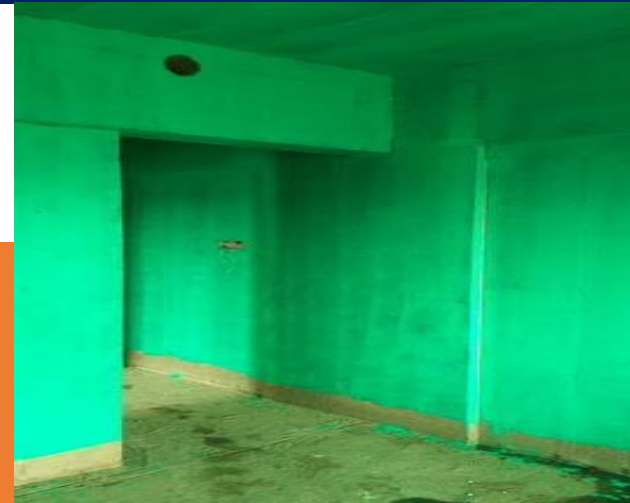
1. Ready To apply in Single Coat Application, Like Painting.
  2. Very Strong Chemical Bond is Created.
  3. No Hacking Required on RCC Surfaces, hence prevention of Microcraking in Concerete & Saving of Labour Cost.
  4. Green in Colour, Easy to Identify Applied Surfaces.
  5. The Bonding Agent Specified With Only **GOLDMAX GYPSUM PLASTER**.
  6. Bond Dries in 1 Hours. Plaster Cab be Applied Any Time
- GYPSUM PLASTER Bonding Agent For Pre-Treatments of Very Strangth and Smooth Background.**



**BOND-IT is a Mixture of Polymer-Cement Composite and Can be put to Multiple Uses....**

- \* Crack Sealing / Filling
- \* Bonding of GYPSUM/Cement/Other
- \* Gypsum Plaster To Concrete
- \* Repair of RCC Surfaces
- \* Tiles Fixing on Walls
- \* Waterproofing Coating

1. Apply The GOLDMAX BOND-IT With Brush our Spray machine.
2. Wash the Concrete Surface With water before 1hr. And apply the Bond-it.
3. Fill any depression with mixture of cement, silica sand & GOLDMAX Bond-it in the retio of 1: 1.50:0.50
4. Clean the concrete surface.
5. Surface is useable after 60 Hours of Treatments.



[WWW.GOLDMAXGYPSUM.COM](http://WWW.GOLDMAXGYPSUM.COM)



## BOND-IT TECHNICAL SPECIFICATION

**GOLDMAX BOND-IT** is used for high strength bonding of GYPSUM PLASTER / CEMENT PLASTER To Concrete Block/RCC. No Hacking is Required Cab Be Apply Directly All Surfaces.

APPLICATION PROCEDURE :	PRECAUTIONS :
-------------------------	---------------

- A- Apply The GOLDMAX BOND-IT With Brush our Spray machine.
- B- Clean the concrete surface.
- C- Bond Dries in 1 Hours. Plaster Cab be Applied Any Time.

**Safety Instructions :-**  
 is the material goes in the eyes wash with water till the burning stops or immediately visit doctor.

**SAVE WATER SAVE TREE SAVE LIFE**

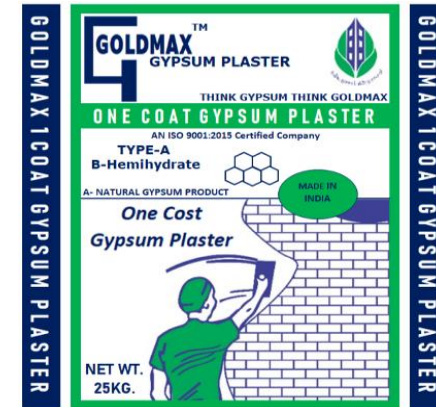
Chemical Composition : Modified Hybrid System.	Film Characteristics : Clear, From's Flexible System With Cement.
Physical Appearance : Green Emulsion	Handling & Storage : Protect From Frost. Containers Once opened should be shut tightly to prevent contamination. Stocks should be used on 1 first in, first out basis.
Solid Contents : More Than 42%	
Viscosity : 1500 cps Max.	
PH Value : 6-8	
Butt Joint Streingth : 2000gm / scm.	
	Packing : 10-20/Kgs HDPE Paint Baket/Jerry Cans.



# RANGE OF GOLDMAX GYPSUM PLASTER PRODUCTS

## GOLDMAX 1 COAT GYPSUM PLASTER

The distinguished advantage of the **GOLDMAX GYPSUM PLASTER 1 COAT**, is that it made out of the highest grade of **GYPSUM being white in colour and having a Very Good hardness**, which is more than any other GYPSUM Plaster available in the Market. This GYPSUM PLASTER Can be easily applied directly an all SURFACES, we do not need to sand/Cement Plaster/ for the walls. **The coverage in a 25KG. Bag 24 SFT With a thickness of the 12mm. The fineness and purity of over 75% gives the best bond an absolute mirror finishing.**



## GOLDMAX SUPER GYPSUM PLASTER

The distinguished advantage of the **GOLDMAX SUPER GYPSUM PLASTER**, is that it made out of the highest grade of **GYPSUM being white in colour and having a Good hardness**, which is more than any other GYPSUM Plaster available in the Market. This GYPSUM PLASTER Can be easily applied directly an all SURFACES, we do not need to sand/Cement Plaster/ for the walls. **The coverage in a 25KG. Bag 24 SFT With a thickness of the 12mm. The fineness and purity of over 60% to 65% gives the best bond an absolute mirror finishing.**

**PRODUCT AVILABLE IN THE MARKET**



GOLDMAX 1 COAT GYPSUM PLASTER  
 GOLDMAX SUPER GYPSUM PLASTER  
 GOLDMAX SUPER XPRT PLASTER  
 GOLDMAX B70 GYP BOND-IT  
 GOLDMAX FIBERMESH TAPE



*AN ISO 9001:2015  
Certified Company*

## APPLICATION METHOD OF GYPSUM PLASTER

**GOLDMAX GYPSUM CAN BE USE ALL SURFACES IN EASILY,**

- 1- Surface Must to be Clean, Dry, Firm & Free of Dust.
- 2- Important Properties Like soluble salt content, Thermal characteristics, Shrinkage, Suction, bonding properties etc. of the background which is to be plasterd, should be evaluated before APPLICATION.
- 3- GOLDMAX GYPSUM PLASTER Can be applied directly of all surfaces, like RCC/RED BRICKS/SIPOREX BLOCKS/SAND PLASTER WALLS.

## DIRECTION OF USE GOLDMAX GYPSUM

- \* VERY SMOOTH FINISHING
- \* SINGLE COAT APPLICATION
- \* CAN BE APPLIED DIRECTLY AN ALL WALLS SURFACES
- \* FREE OF SHRINKAGE CRACKES
- \* ZERO MAINTENANCE
- \* COMPATIBLE WITH ALL TYPES OF PAINT
- \* WHITE IN COLOUR PRODUCT

- \* The Right Way To Mix is To Add The GYPSUM Powder to Water , Not Water to Powder
- \* Avoid Mixing More Powder That can be used Within 12 Minutes.
- \* Do Not Temper or Mix fresh Material once a Mix has Started To Set
- \* After Taking the Required amount of Plaster, always fold the open end, to Protect the plaster From Moisture.
- \* Setting Time cannot be altered by Bdiluting the Mixture with water.



Email- [info@goldmaxgypsum.com](mailto:info@goldmaxgypsum.com)

Mob. +91 953859 6468

Tel- 080 8079601014

**BANGALORE | NCR DELHI | HARYANA | LUCKNOW -UP | J&K |**

Salikram Jaiswal Mob+ 91 90664 17285

[WWW.GOLDMAXGYPSUM.COM](http://WWW.GOLDMAXGYPSUM.COM)

SIZE - A3 (10PCS) STICKER

**GOLDMAX** <sup>TM</sup>  
**GYPSUM**

GSTIN-  
29AAICG5121H1ZM

**GOLDMAX** <sup>TM</sup>  
GYPSUM PLASTER  
THINK GYPSUM THINK GOLDMAX  
**ONE COAT GYPSUM PLASTER**  
AN ISO 9001:2015 Certified Company  
TYPE-A  
B-Hemihydrate  
A-NATURAL GYPSUM PRODUCT  
**One Cost**  
Gypsum Plaster  
NET WT.  
25KG.

**GOLDMAX** <sup>TM</sup>  
bond it  
INSTANT PLASTER  
GYP BOND

**GOLDMAX** <sup>TM</sup>  
Fiberglass Mesh Roll

**MKTD. BY- GOLDMAX PLASTERS PRIVATE LIMITED.**  
RO: No, 402 Ground Floor, Dwarikamayi Building, 8th B Main, 4th Cross, Hrbr Layout 1st Blcok, Hrbr  
(Bangalore) Urban, Karnataka, 560043  
Email : [info@goldmaxgypsum.com](mailto:info@goldmaxgypsum.com) Office- Goldmax Gypsum - +91 95380 96468  
Web : [www.goldmaxgypsum.com](http://www.goldmaxgypsum.com) Tel- 080 80796 01014

**THINK GYPSUM THINK GOLDMAX**

SIZE - 8"\*4" STICKER



## Fiberglass Mesh Roll

**Product : GM- 85/GSM High Strength**

**MKTD. BY- GOLDMAX PLASTERS PRIVATE LIMITED.**

RO: No, 402 Ground Floor, Dwarikamayi Building, 8th B Main, 4th Cross, Hrbr Layout 1st Blcok, Hrbr (Bangalore) Urban, Karnataka, 560043

**Email- [info@goldmaxgypsum.com](mailto:info@goldmaxgypsum.com)**

**Web- [www.goldmaxgypsum.com](http://www.goldmaxgypsum.com)**

**Contact : +91 9538 096468 / +91 90664 17285**

**RANGE OF  
PRODUCT :  
45/GSM,  
85/GSM,  
SIZE - 1MTR \*  
50MTR. ROLL**

**MRP- Rs.  
2200 /- INCL.  
TAX.  
50Mtr. Roll**



**[WWW.GOLDMAXGYPSUM.COM](http://WWW.GOLDMAXGYPSUM.COM)**

SIZE - 8" \* 4" (200PCS ) STICKER

**GOLDMAX** <sup>TM</sup>

## Fiberglass Mesh Roll

**Product : GM- 85/GSM High Strength**

**MKTD. BY- GOLDMAX PLASTERS PRIVATE LIMITED.**

RO: No, 402 Ground Floor, Dwarikamayi Building, 8th B Main, 4th Cross, Hrbr Layout  
1st Blcok, Hrbr (Bangalore) Urban, Karnataka, 560043

Email- [info@goldmaxgypsum.com](mailto:info@goldmaxgypsum.com)

Web- [www.goldmaxgypsum.com](http://www.goldmaxgypsum.com)

**MRP- Rs. 850/- INCL. TAX. 50Mtr. Roll**

**Contact - +91 95380 96468**

**Tel- 080 80796 01014**





SAMPLE CARD STICKER

SIZE - 6" \* 3.5"

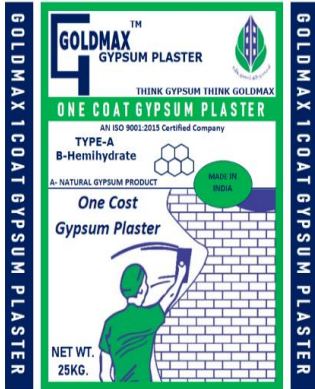
<b>GOLDMAX</b> <sup>TM</sup> <b>GYPSUM</b>	
GYPSUM SAMPLE -	
SAMPLE DATE	
PRODUCT NAME	.....
SAMPLE SIZE	
<b>MKTD BY- GOLDMAX PLASTERS PRIVATE LIMITED.</b>	
No-402, GF Dwarikamayi Building, 8th B Main, 4th Cross, Hrbr Bangalore Karnataka -560043	
Contact : +91 95385 96468 / +91 9538 096468	
Email - info@goldmaxgypsum.com	
Web - www.goldmaxgypsum.com	
<b>THINK GYPSUM THINK GOLDMAX</b>	

SIZE - 4.5" \* 3.5" information STICKER

<b>GOLDMAX</b> <sup>TM</sup> <b>GYPSUM</b>	<b>THINK GYPSUM THINK GOLDMAX</b>
	
<b>MKTD BY- GOLDMAX PLASTERS PRIVATE LIMITED.</b>	
No-402, GF Dwarikamayi Building, 8th B Main, 4th Cross, Hrbr Bangalore Karnataka -560043	
Email- info@goldmaxgypsum.com	
Contact : +91 95385 96468 / +91 95380 96468	
<b>BANGALORE   NCR DELHI   HARYANA   LUCKNOW -UP   J&amp;K  </b>	
<b>WWW.GOLDMAXGYPSUM.COM</b>	

# GOLDMAX<sup>TM</sup> GYPSUM

THINK GYPSUM THINK GOLDMAX



Goldmax One Coat Gypsum



Goldmax Bond-it



**GOLDMAX<sup>TM</sup>**  
Fiberglass Mesh Roll

**MKTD BY- GOLDMAX PLASTERS PRIVATE LIMITED.**

No-402, GF Dwarikamayi Building, 8th B Main, 4th Cross, Hrbr Bangalore Karnataka -560043

Email- [info@goldmaxgypsum.com](mailto:info@goldmaxgypsum.com)

Contact : +91 95385 96468 / +91 95380 96468

BANGALORE | NCR DELHI | HARYANA | LUCKNOW -UP | J&K |  
Lucknow - Diptiganj, Nagram Nilmattha Road, Lucknow UP-226002

[WWW.GOLDMAXGYPSUM.COM](http://WWW.GOLDMAXGYPSUM.COM)



**GOLDMAX****PLASTERS PRIVATE LIMITED.**


No- # 021 Ground Floor, Diptiganj, Nargram Nilmattha, Lucknow UP- 226002

Email- info@goldmaxgypsum.com Mob- 95380 96468 / 90664 17285

Challan No: GM- 01 TO 50 PAGE

DATE:

M/s.....

PARTICULARS	QTY	RATE	AMOUNT
			
	TOTAL		
Authorized Signatory			

DATE :

**GOLDMAX**



**PLASTERS PRIVATE LIMITED**

Quotation/Rate/For Gypsum Plaster Work-

THICKNESS .....  
 GYPSUM COST .....  
 BOND-IT COST .....  
 LABOUR COST .....  
 OTHER COST .....  
**TOTAL COST = ...../- Excl. Tax.**

RO: No # 402, Ground Floor, Dwarikamayi Building  
 8th B Main, 4th Cross, Hrbr Layout  
 Bangalore - 560043  
 Email- info@goldmaxgypsum.com  
 Web- www.goldmaxgypsum.com  
**Contact - +91 95385 96468 / +91 95380 96468**  
 Salikram Jaiswal - +91 90664 17285

Note/Comments-

**THINK GYPSUM THINK GOLDMAX**

BACK SIDE WATER PAINT LOGO ONLY

**GOLDMAX**